

Proposed development of an instream dam on Portions 2 and 3 of Farm No. 1100, Bonathaba, Malmesbury, Western Cape

HWC CASE NO. 20051901



Figure 1A. Site locality (3318DB Paarl). Red polygon indicates location of the study site in a regional context

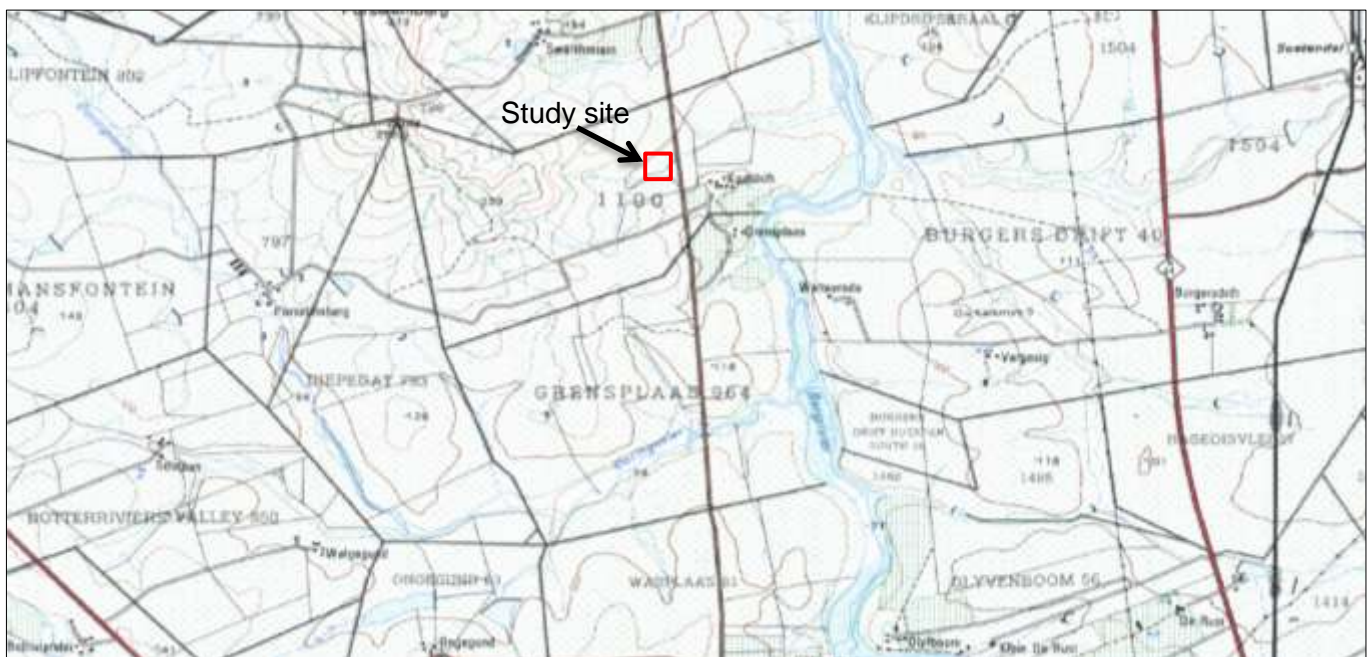


Figure 1B. Site locality (3318DB Paarl). Red polygon indicates location of the study site in a local context



Figure 2. Google satellite map indicating the location of the study site in a regional context

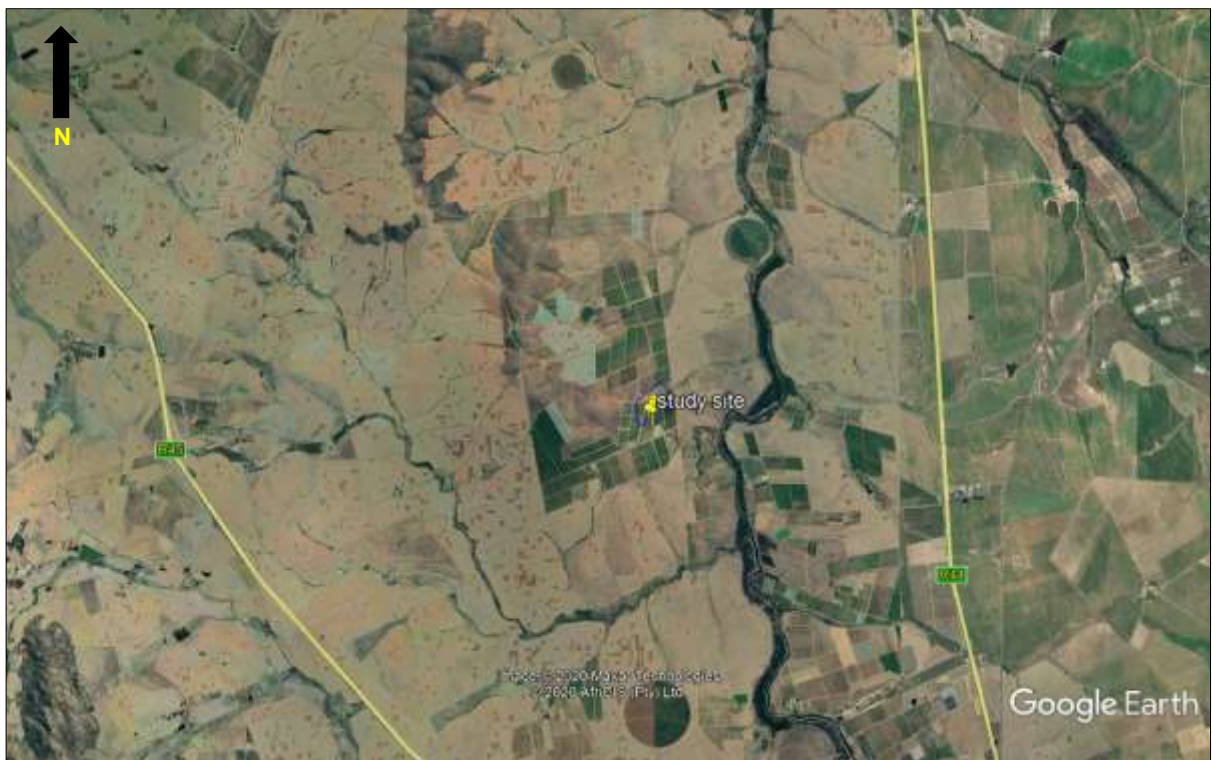


Figure 3. Google satellite map indicating the location of the study site in a local context. Note the surrounding land use



Figure 4. Close up google satellite map of the study site (blue polygon) indicating the full inundation area

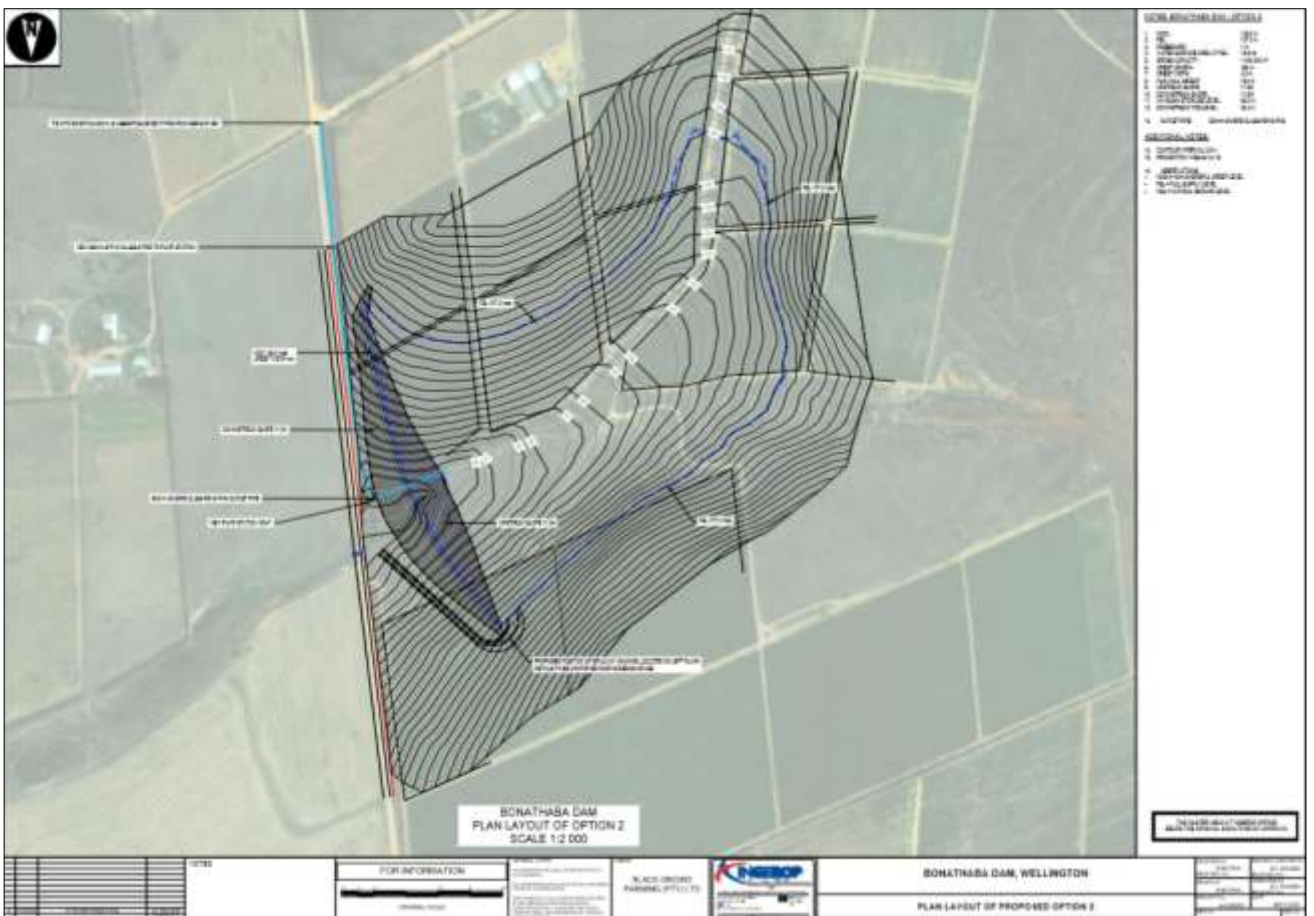


Figure 5. Site plan for the proposed Bonathaba Dam.

SITE PHOTOGRAPHS: PROPOSED DEVELOPMENT OF AN IN-STREAM DAM ON PORTIONS 2 AND 3 OF FARM NO. 1100, BONATHABA, MALMESBURY, WESTERN CAPE – 05 JUNE 2020



Figure 6. View of the proposed site, looking in a southern direction towards the farm packing shed, office as well as existing vineyards



Figure 7. View of the proposed site as viewed from the existing farm road, looking in a southern direction towards the stream and existing vineyards & citrus orchards



Figure 8. View of the proposed site as viewed from the existing farm road on site, looking in a southern direction toward the stream & existing vineyards & citrus orchards



Figure 9: View of the site north-eastern part of the site, looking in an eastern direction.



Figure 10: View of the site at the centre point, looking in a north-western direction towards the existing vineyards



Figure 11: View of the proposed site as viewed from the access gate located along Porseleinberg Road. Looking in a north-western direction



Figure 12: View of the proposed site, looking in a north-western direction. The stream and citrus orchards can be seen in the background.



Figure 13: A view of the proposed site, looking in a south-eastern direction



Figure 14: A view of the proposed site, looking in a south-western direction as viewed from the farm road



Figure 15: A view of the proposed site, looking in a western direction.



Figure 16: A view of the proposed site, looking in a south-western direction.