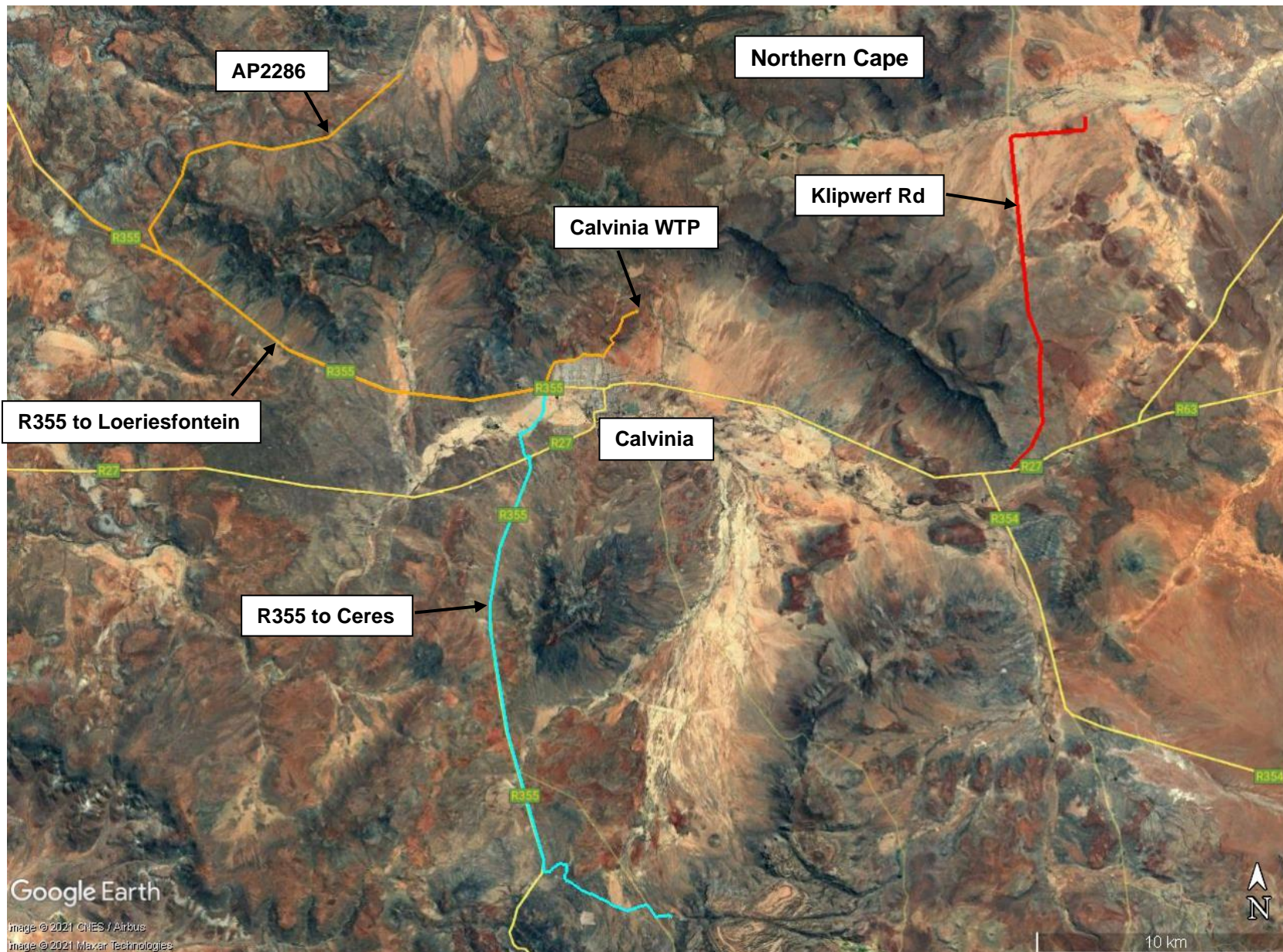





# PROPOSED UPGRADE AND EXPANSION OF THE CALVINIA BULK WATER SUPPLY



## PROPOSED PIPELINES

-  KLIPWERF PIPELINE
-  KREITZBERG PIPELINE
-  NORTH-WEST PIPELINE

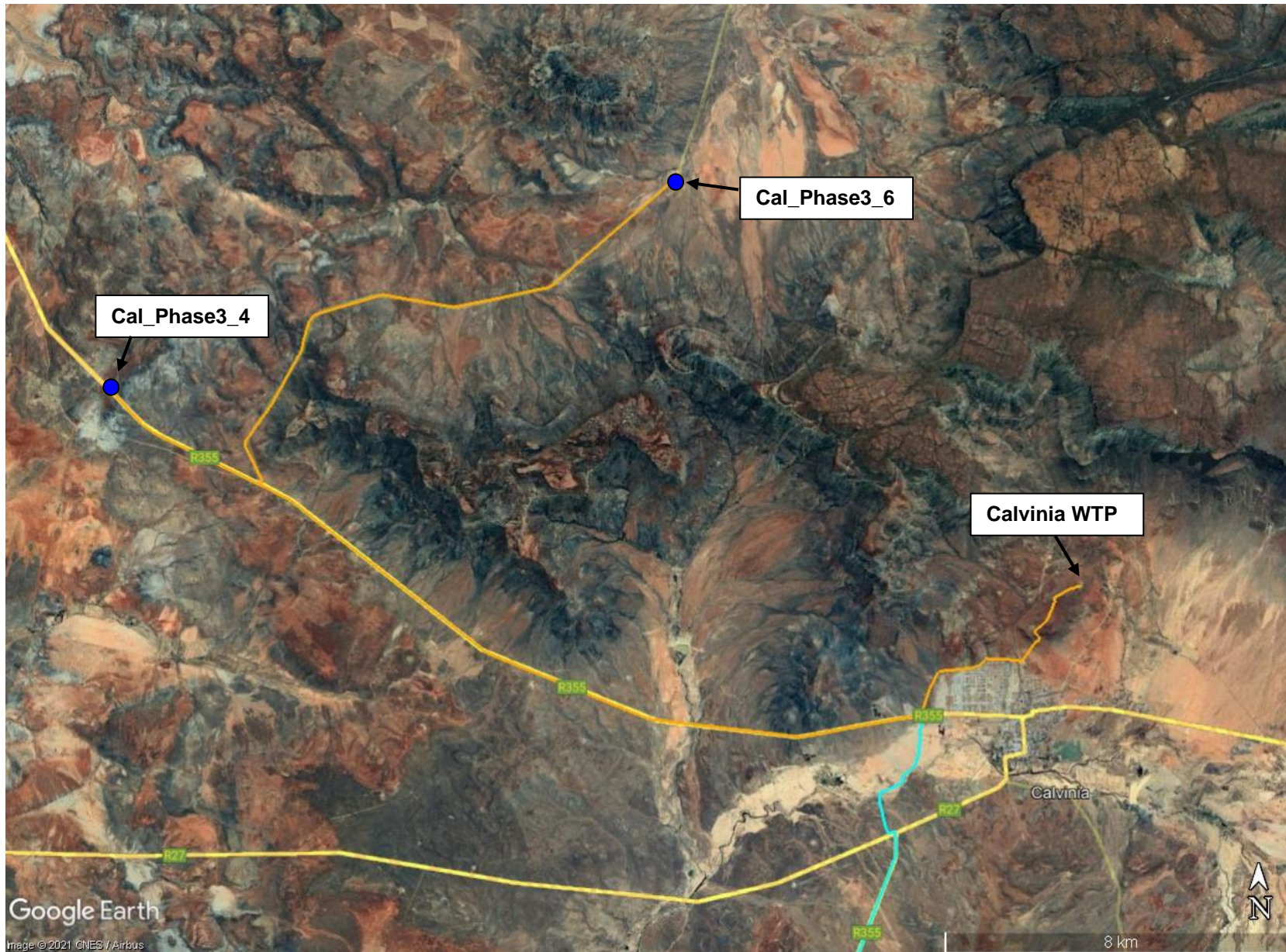
ENVIROAFRICA REF:

0737

October 2021



# PROPOSED UPGRADE AND EXPANSION OF THE CALVINIA BULK WATER SUPPLY



## SITE CO-ORDINATES

**Calvinia WTP:**  
31°26' 26.47" S  
19°47' 17.25" E

**Cal\_Phase3\_6:**  
31°21' 27.81" S  
19°41' 29.40" E

**Cal\_Phase3\_4:**  
31°24' 04.21" S  
19°33' 24.05" E

● Boreholes

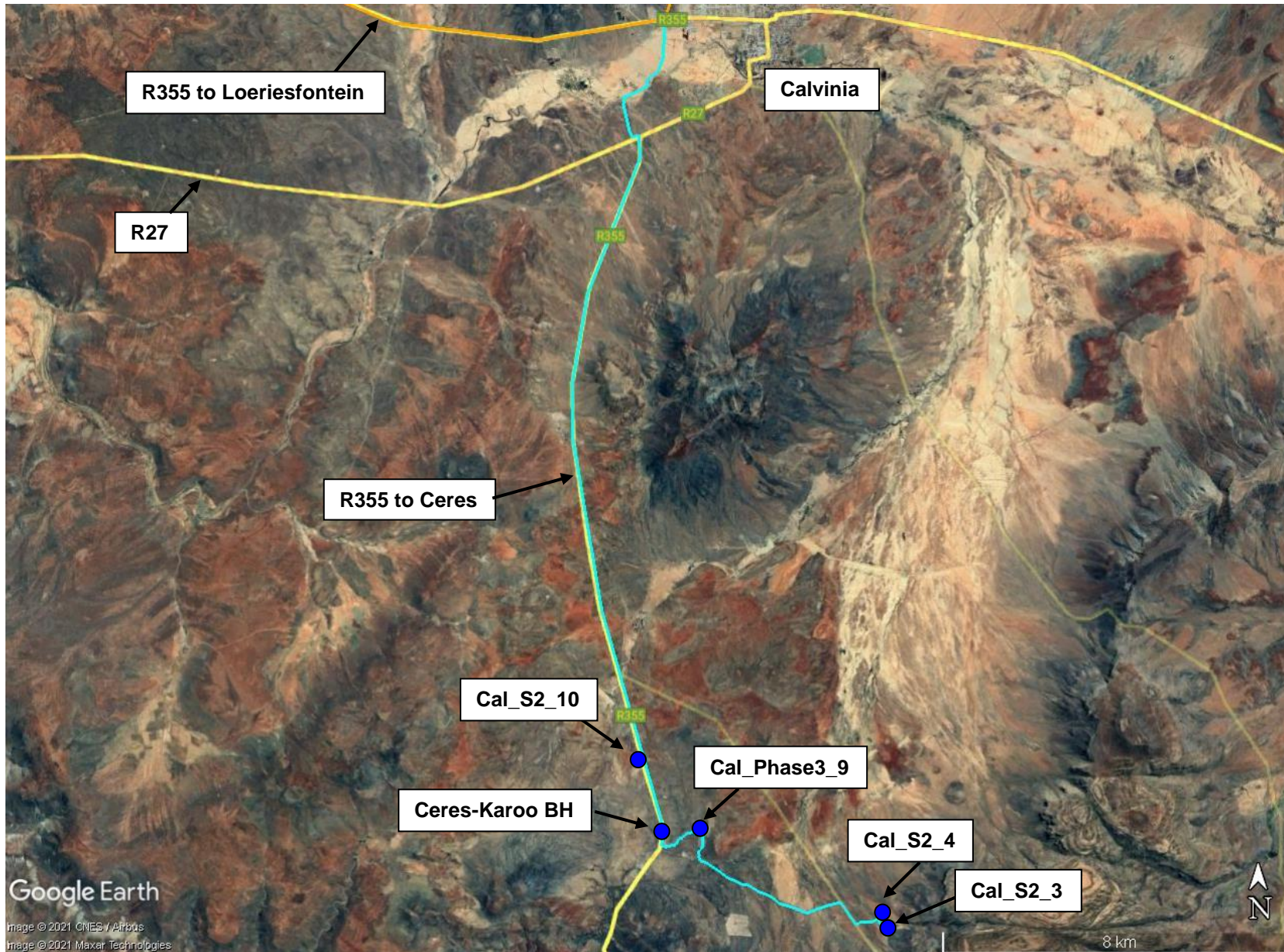
## ENVIROAFRICA REF:

0737

October 2021



# PROPOSED UPGRADE AND EXPANSION OF THE CALVINIA BULK WATER SUPPLY



## SITE CO-ORDINATES

### Cal\_S2\_10:

31°37' 02.86" S  
19°44' 41.01" E

### Ceres-Karoo BH:

31°38' 07.74" S  
19°44' 57.99" E

### Cal\_Phase3\_9:

31°37' 57.77" S  
19°45' 24.41" E

### Cal\_S2\_4:

31°39' 01.29" S  
19°48' 03.77" E

### Cal\_S2\_3:

31°39' 04.13" S  
19°48' 06.93" E

● Boreholes

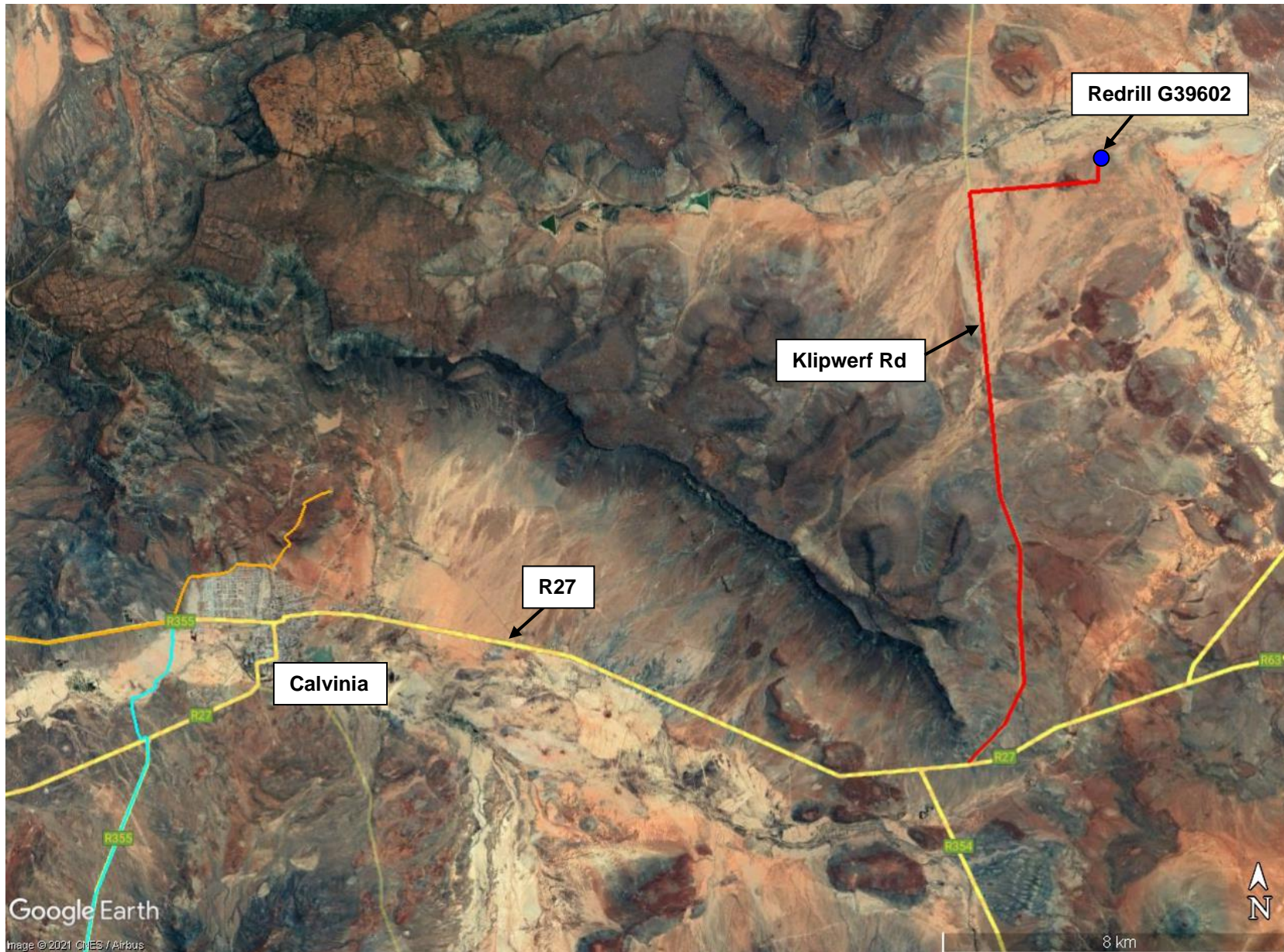
## ENVIROAFRICA REF:

0737

October 2021



# PROPOSED UPGRADE AND EXPANSION OF THE CALVINIA BULK WATER SUPPLY



## SITE CO-ORDINATES

**Redrill G39602:**  
31°22' 22.68" S  
19°58' 15.22" E

 **KLIPWERF  
PIPELINE**

 **Boreholes**

## ENVIROAFRICA REF:

0737

October 2021

