

APPENDIX C_ SITE PHOTOGRAPHS

PROPOSED DEVELOPMENT OF A 35M HIGH TELECOMMUNICATION MAST ON PORTION 22 OF FARM 22, ZOUTERIVIER, WESTERN CAPE (SITE VISIT CONDUCTED ON THE 22ND OF JANUARY 2021)



Figure 1: Overview of proposed site for development. Note level of disturbance and limited vegetation. Refer to Figure 14 for location of photograph relative to site (A).



Figure 2: Overview of area surrounding proposed site for development. Note that property has been fenced off. Alien invasive plant species (namely *Eucalyptus* spp.) present (red arrow). Refer to Figure 14 for location of photograph relative to site (B).



Figure 3: A view of the proposed site, looking in a north-western direction. No trees will be removed for the proposed development. Note disturbed state of vegetation associated with the site. Refer to Figure 14 for location of photograph relative to site (C).



Figure 4: Overview of non-operational (no longer in use) water attenuation feature with alien invasive plant species (namely *Acacia cyclops*). Refer to Figure 14 for location of photograph relative to site (D).



Figure 5: Overview of area surrounding proposed site for development including chicken broiler facility and alien invasive plant species, namely *Eucalyptus* sp. Photograph facing westerly direction.



Figure 6: Disturbed area surrounding the proposed site for development. Yellow arrow shows location of Rondeberg Road relative to the proposed site.



Figure 7: Overview of the site from Rondeberg Road. Poster placed at corner of property (blue arrow). Refer to Figure 14 for location of photograph relative to site (E).



Figure 8: Overview of alternative site (33°36'21.3"S; 18°35'29.9"E). This site is less disturbed compared to the preferred site for development and is located further from power source. Refer to Figure 14 for location of photograph relative to site (F).



Figure 9: Indigenous tree species, namely *Searsia* spp (yellow arrow), located outside the proposed development footprint. Note disturbed vegetation (due to previous grazing) associated with the site.



Figure 10: Disturbed vegetation associated with the proposed site for development. These plant species includes the common duwweltjie (*Tribulus terrestris*), Fynkweek (*Cynadon dactylon*), and *Cephalophyllum* spp - possibly *Cephalophyllum loreum* - plant species indicative of disturbed areas.



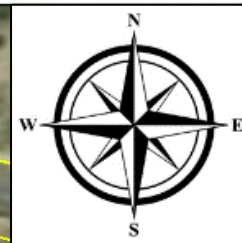
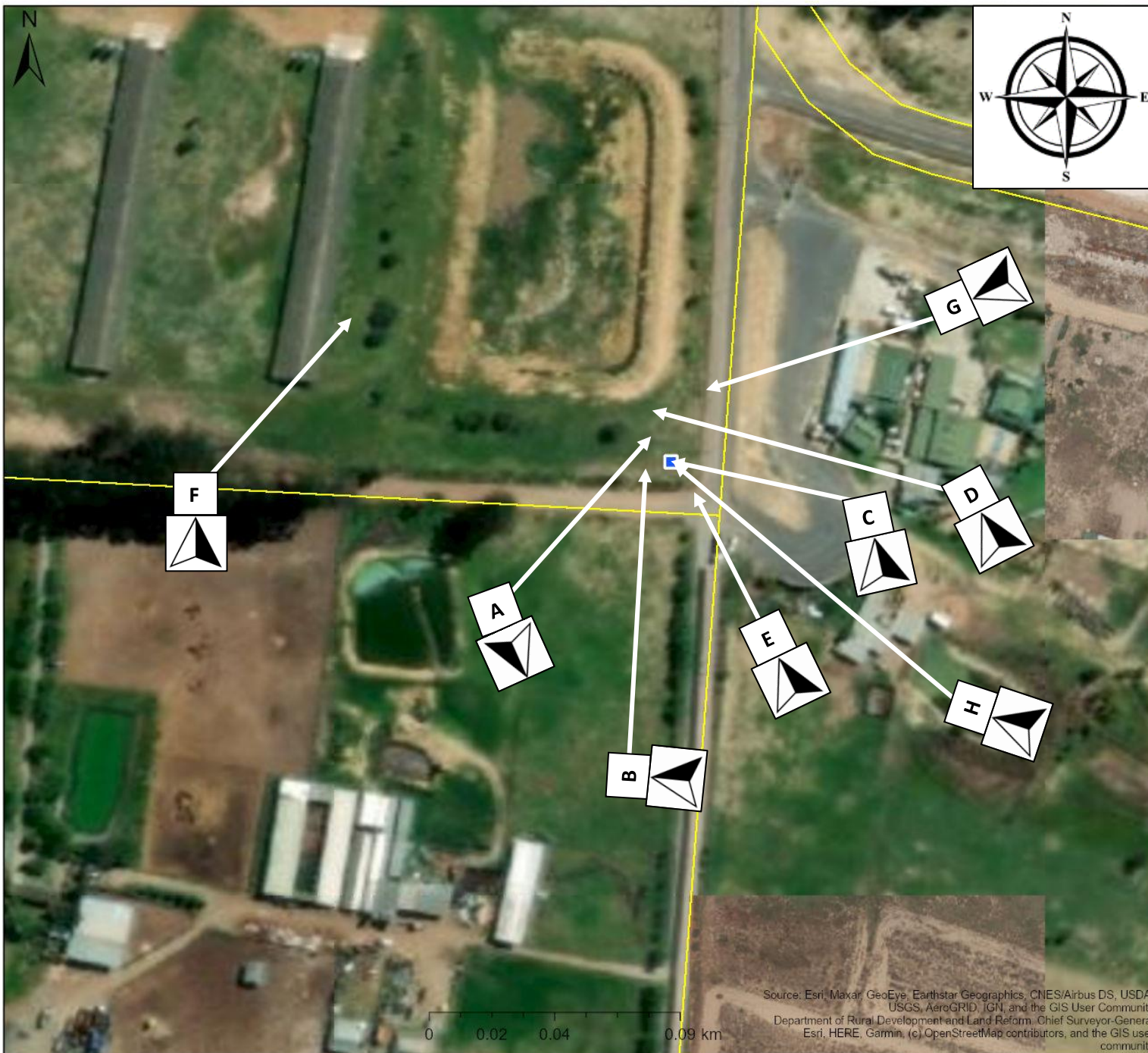
Figure 11: Overview of site for proposed development. Photographed in a westerly direction from Rondeberg Road. Refer to Figure 14 for location of photograph relative to site (G).




Figure 12: Proposed location for development. Note disturbed vegetation associated with the proposed site for development. These plant species include common duuwtjje (*Tribulus* sp.), Fynkweek (*Cynodon dactylon*), and *Cephalophyllum* spp - possibly *Cephalophyllum loreum* - plant species indicative of disturbed areas. Refer to Figure 14 for location of photograph relative to site (H).



Figure 13: Proposed location for development. Note disturbed vegetation associated with the proposed site for development. These plant species include common duwweltjie (*Tribulus* sp.), Fynkweek (*Cynodon dactylon*), and *Cephalophyllum* spp - possibly *Cephalophyllum loreum* - plant species indicative of disturbed areas.



Legend

 Farm Portions



Direction photograph was taken in.

Scale: 1:2 257

Date created: April 28, 2021

Compiled with CapeFarmMapper



**Western Cape
Government**

Agriculture

Source: Esri, Maxar, GeoEye, Earthstar Geographics, CNES/Airbus DS, USDA, USGS, AeroGRID, IGN, and the GIS User Community
Department of Rural Development and Land Reform, Chief Surveyor-General
Esri, HERE, Garmin, (c) OpenStreetMap contributors, and the GIS user community