



25 February 2021

EnviroAfrica
P.O. Box 5367
HELDERBERG
7135

Attention: Mr Anthony Mader

[e-mail: anthony@enviroafrica.co.za]

Dear Sir

PORTION 22 OF CAPE FARM 22 ZOUTE RIVIER, RONDEBERG ROAD, KLEIN DASSENBERG: PROPOSED 35M LATTICE CELLULAR MAST – NOTICE OF INTENT TO DEVELOP

The Notice of Intent to Develop (NID), dated 26 January 2021, pertaining to the abovementioned farm, refers.

1. Kindly register the Environmental Management Department: Blaauwberg District as the official City of Cape Town entry point for comment on the aforementioned Basic Assessment Report. Be advised that the Environmental Management Department (EMD) is the duly mandated department to provide co-ordinated City comment on EIAs conducted within the municipality's jurisdiction. As the subject farm falls within the Blaauwberg District of the City of Cape Town all future reports must be submitted to this office for comment.
2. In order for the City to meet the statutory commenting deadline(s) you are required to timeously submit electronic copy (i.e. flash disk) and 1 x hard copy of the various Environmental Impact Assessment reports to this office before EMD can circulate the draft reports to all our affected line departments. The public participation commenting period will be calculated from the date that this office receives the flash disk and hard copy. As such please ensure that the necessary documentation is delivered to our physical address as stated below.
3. In the interim the following comment is provided based on the information provided in the BID:
 - 3.1. The City of Cape Town Telecommunication Mast Infrastructure Policy (2015) must be listed. The proposed mast must be assessed against the policy's objectives.
 - 3.2. According to the City of Cape Town: Biodiversity Map the subject farm does not support any critical biodiversity areas (CBA). Figure 2 below shows the botanical significance map (2021) and the CBAs on the abutting farms.

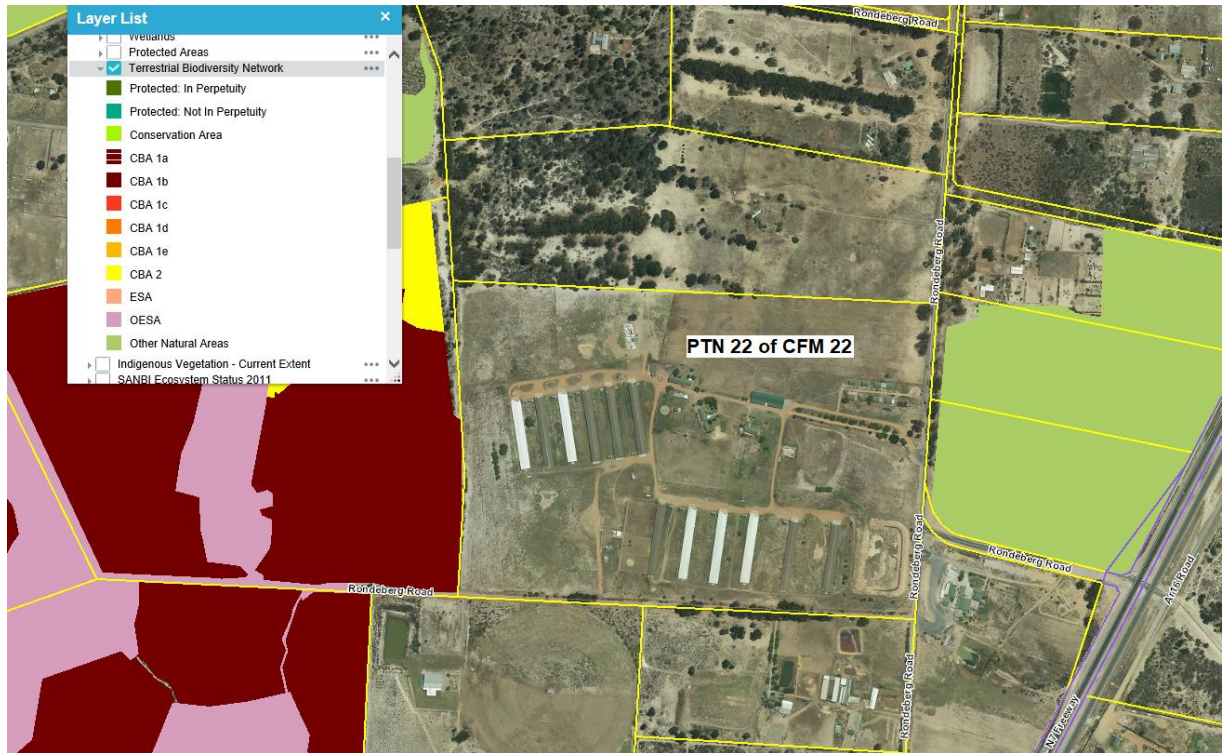


Figure 1: Ptn 22 of CFM 22 in relation to the City of Cape Town: Biodiversity Network Map (2021)

- 3.3. Be advised that a land use departure application will be required in terms of the Cape Town Municipal Planning By-law. The draft Basic Impact Assessment Report (BAR) must acknowledge the same.

The abovementioned comment must be included in the draft BAR.

Pat Titmuss

PAT TITMUSS

Head: Environmental Management Department: Environmental & Heritage Management Branch – Northern Region