

**Photo 1: Borehole Cal\_S2\_3 (Taken from Point 1)**



**Photo 2: Access Road to borehole Cal\_S2\_3 and proposed pipeline route (Taken from Point 2)**



**Photo 3: Pipeline route between Boreholes Cal\_S2\_3 and Cal\_S2\_4 (taken from Point 3)**



**Photo 4: Borehole Cal\_S2\_4 (Taken from Point 4)**



**Photo 5: Access to boreholes Cal\_S2\_3 and Cal\_S2\_4 (Farm 854) (Taken from Point 5)**

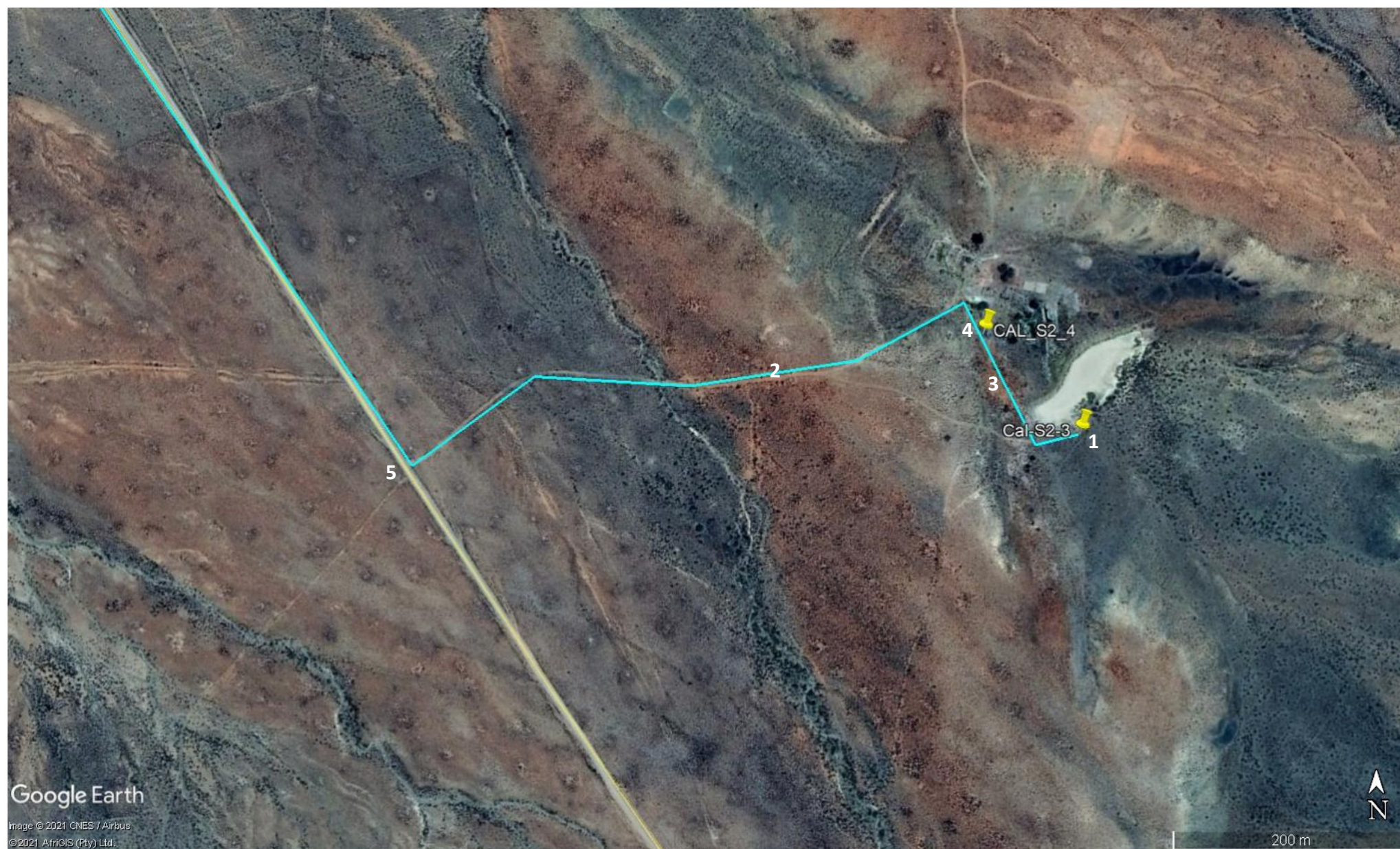


**Photo 6: Pipeline route along Nooiensrivier road from access gate (Taken from Point 5 looking north-west)**





Google Earth image of the photograph positions for Photos 1 - 6. Photographs taken on 17 November 2020





**Photo 7: Pipeline route between Nooiensrivier Rd and R355  
(Taken from Point 6)**



**Photo 8: Drainage line (Taken from Point 7)**



**Photo 9: Borehole Cal\_Phase3\_9 (taken from Point 8)**



**Photo 10: Approximate pipeline route between Cal\_Phase3\_9  
and Ceres-Karoo BH (Taken from Point 8 looking south-west)**



**Photo 11: Ceres-Karoo BH (Taken from Point 9 looking south  
down the R355)**



**Photo 12: Borehole Cal\_S2\_10 (Taken from Point 10 looking  
north up the R355). Pipeline route will be within the road reserve**





Google Earth image of the photograph positions for Photos 7 - 12. Photographs taken on 17 November 2020





**Photo 13: Borehole Cal\_Phase3\_4 (Taken from Point 11, looking south-east down the R355)**



**Photo 14: Borehole Cal\_Phase3\_6 (Taken from Point 12)**



**Photo 15: Pipeline route from Cal\_Phase3\_6 along the Toren Rd (AP2286) (taken from Point 12 looking south-west)**



**Photo 16: AP2286 and R355 junction, indicating the pipeline route (Taken from Point 13 looking south-east down the R355)**

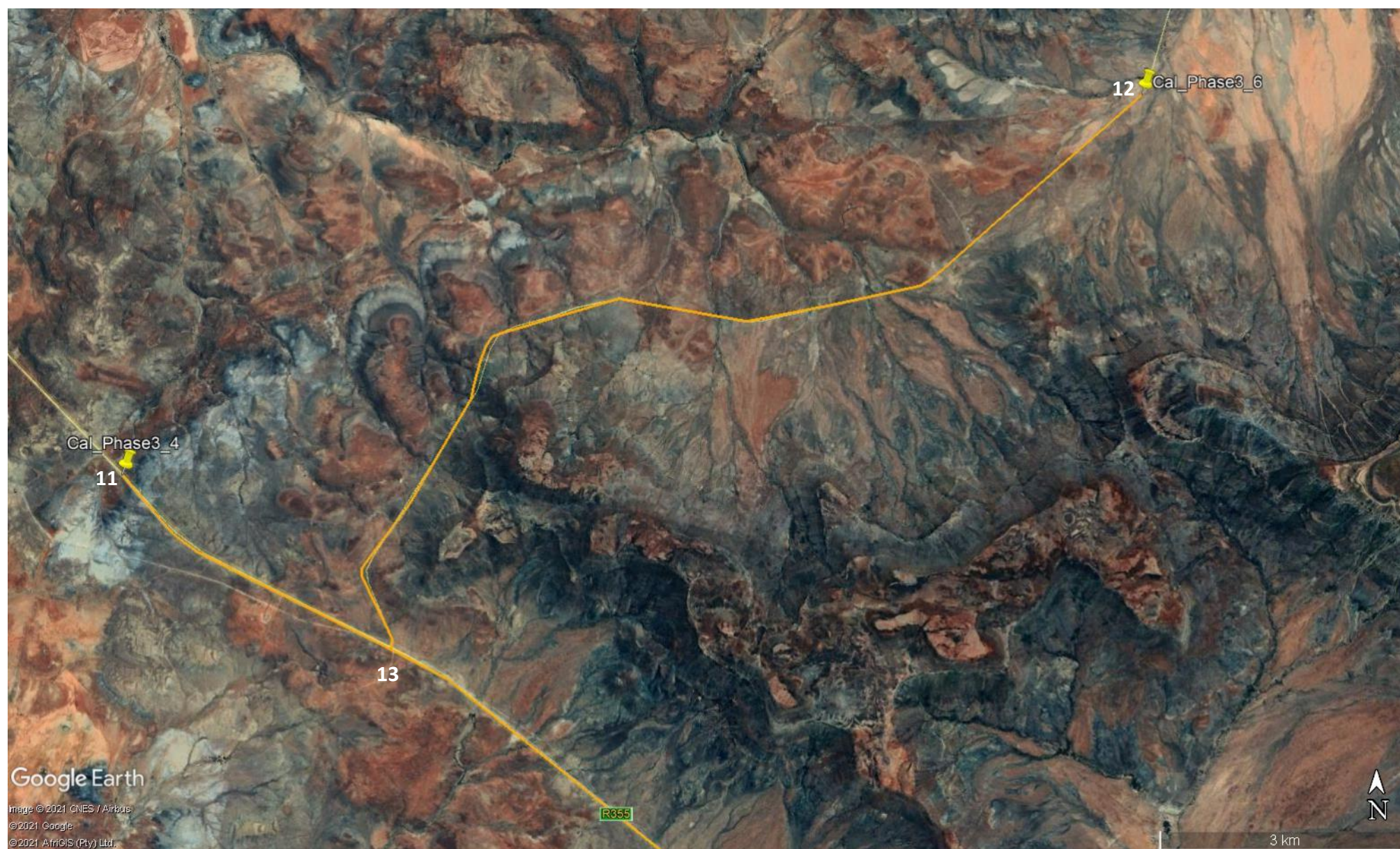


**Photo 17: Pipeline route along the R355 (Taken from Point 13 looking north-west along the R355)**





Google Earth image of the photograph positions for Photos 13 - 17. Photographs taken on 17 November 2020





**Photo 18:** Taken from Point 14, looking north along pipeline route



**Photo 19:** Taken from Point 15, looking north along pipeline route



**Photo 20:** Taken from Point 16, looking north-east along pipeline route



**Photo 21:** Taken from Point 17, looking north along pipeline route across the Oorlogkloof River



**Photo 22:** Taken from Point 18, looking north along pipeline route



**Photo 23:** Taken from Point 19, looking north along pipeline route





Google Earth image of the photograph positions for Photos 18 - 23. Photographs taken on 09 September 2021

