

DETAIL
SCALE 1:50

FOR DETAIL OF TIE-IN FROM
EXISTING CHANNEL TO NEW
CHANNEL SEE DWG
240790KRO/05/02

- NOTE:**
- BACKFILL AROUND NEW DIVISION CHAMBER IS REQUIRED TO ENSURE 300mm COVER OVER PIPELINES
 - FOR CLARIFIER INVERT LEVELS REFER TO DRAWING NUMBER 240790KRO/02/01 & 240790KRO/02/02
 - SOCKET GATE VALVE WITH EXTENSION SPINDLE

BENCHMARKS (Lo 19° WGS 84)

POINT	-0.000	+0.000	DESCRIPTION	HEIGHT
BM1	-74 929.23	3 480 130.52	12mm STEEL IN ROCK	39.12
BM2	-74 910.81	3 480 174.85	12mm STEEL IN ROCK	39.49
BM3	-74 965.68	3 480 185.51	12mm STEEL IN ROCK	33.81
BM4	-74 959.36	3 480 077.02	12mm STEEL ON RESERVOIR	39.03

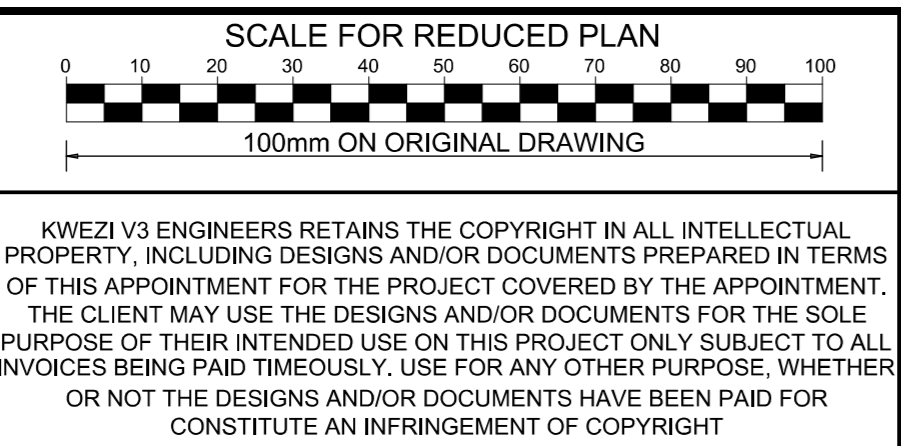
SETTING OUT DATA (Lo 19° WGS 84)

POINT	-0.000	+0.000	DESCRIPTION	POINT	-0.000	+0.000	DESCRIPTION
NEW CLARIFIERS (3 OFF.)							
C1	-74 906.103	3 480 079.965	CENTRE OF CLARIFIER	CH1	-74 908.625	3 480 127.814	EDGE OF CONCRETE
C2	-74 918.203	3 480 079.965	CENTRE OF CLARIFIER	CH2	-74 902.174	3 480 127.990	EDGE OF CONCRETE
C3	-74 918.203	3 480 092.065	CENTRE OF CLARIFIER	CH3	-74 901.095	3 480 088.433	EDGE OF CONCRETE
NEW DIVISION CHAMBER							
DC1	-74 906.203	3 480 090.233	EDGE OF CONCRETE	CH4	-74 901.904	3 480 089.242	EDGE OF CONCRETE
DC2	-74 908.703	3 480 090.233	FOOT OF STAIRS	CH5	-74 904.883	3 480 089.233	EDGE OF CONCRETE
DC3	-74 908.703	3 480 089.333	FOOT OF STAIRS	CH5	-74 904.683	3 480 088.433	EDGE OF CONCRETE
DC4	-74 907.803	3 480 087.233	EDGE OF CONCRETE	NEW MANHOLES (2 OFF.)			
DC5	-74 906.203	3 480 087.233	EDGE OF CONCRETE	MH1	-74 912.154	3 480 079.956	CENTRE OF MANHOLE No.1
				MH2	-74 912.161	3 480 093.819	CENTRE OF MANHOLE No.2
				MH3	-74 912.929	3 480 075.638	CENTRE OF MANHOLE No.3

AS-BUILT

Amendment

No.	Date	Done by	Description
-	21/10/10	RE	FOR TENDER ONLY
-	15/04/11	RE	FOR CONSTRUCTION
-	15/04/11	RE	MH2 MOVED; DIVISION BOX MOVED; NEW PIPE WORK
-	23/08/12	RE	AS-BUILT



KW3 ENGINEERS
31 Allen Drive, Loventstein, 7530
SOUTH AFRICA
P.O. Box 398, Bellville, 7535
Tel: +27 (0)21 912 3000 Fax: +27 (0)21 912 3222
e-mail: capetown@kw3.co.za
www.kw3.co.za

Designed	TLD / IS	Consulting Engineer	Date
Drawn	RE		
Checked	TLD / IS	Client	Date

Client
HANTAM MUNICIPALITY
20 Hope Street, CALVINIA 8190
Private Bag 114, CALVINIA 8190
SOUTH AFRICA
TEL: 27 (0)27 341 8500 FAX: 27 (0)27 341 8501
email: hantam@hantam.gov.za

Project
UPGRADE OF CALVINIA WATER TREATMENT WORKS

Drawing Description
GENERAL SITE LAYOUT

Scale	1:150
Date	APRIL 2011
Drawing Number	240790KRO/01/01