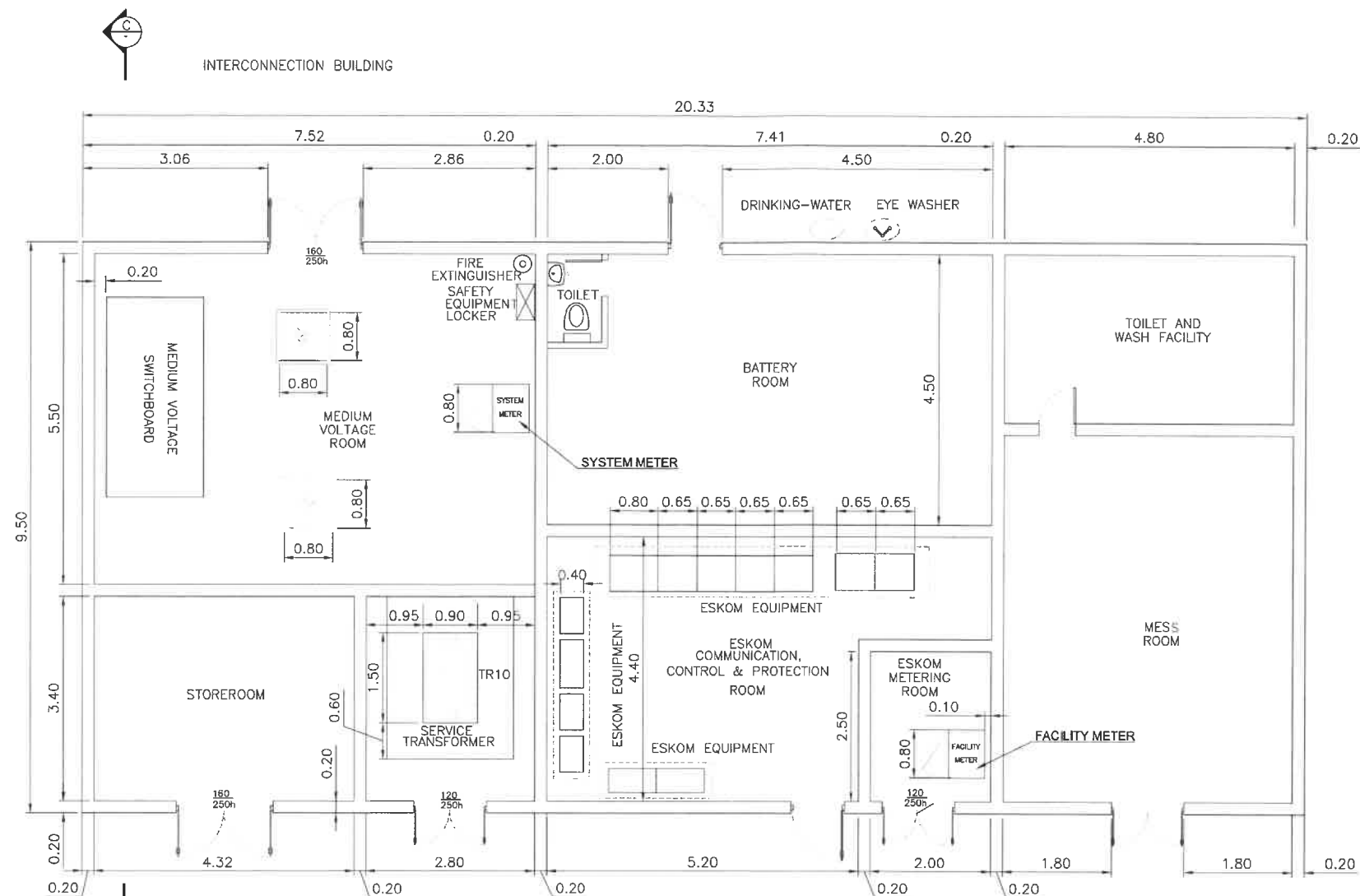
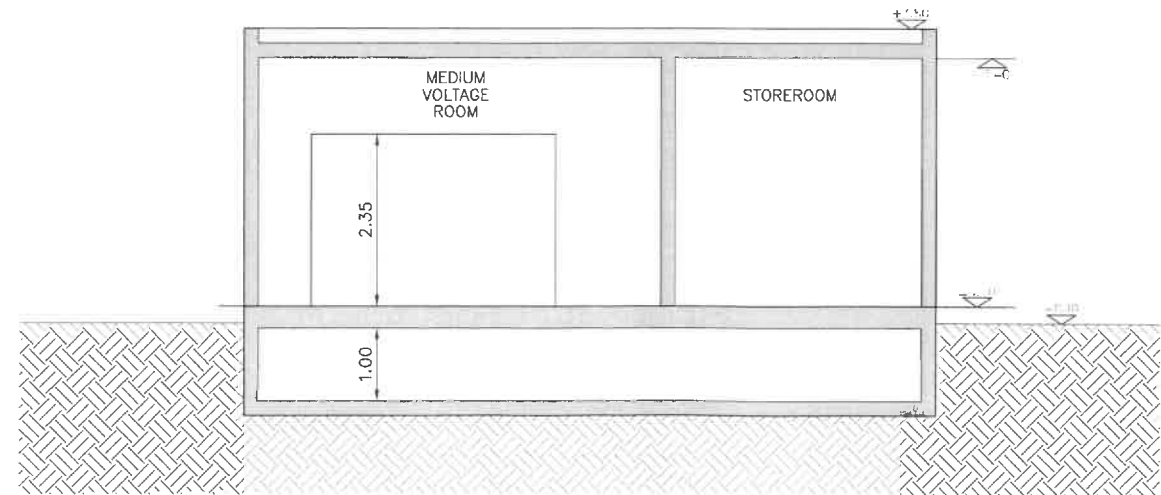


Appendix B – Site Layout/Plans



1 PLAN VIEW
SCALE: 1:50



C SECTION C-C
SCALE: 1:50

NOTES:

1. DEFINITIVE DIMENSIONS AND INTERNAL ARRANGEMENT WILL BE DETERMINED IN FURTHER STAGES OF THE PROJECT.
2. SUBSTATION BUILDING SHALL COMPLY WITH ESKOM STANDARS AND REQUIREMENTS.



PRELIMINARY
NOT FOR
CONSTRUCTION

ENGINEER'S STAMP

PV POWER GENERATION PLANT

SOUTH AFRICA

SUBSTATION BUILDING
LAYOUT

REV	DESIGN #	DATE	DB	CB

OPPORTUNITY
PROJECT
DATE DRAWN
DRAWN BY

0 1 2
IF BAR IS NOT 2cm, DRAWING IS NOT TO SCALE
SHEET

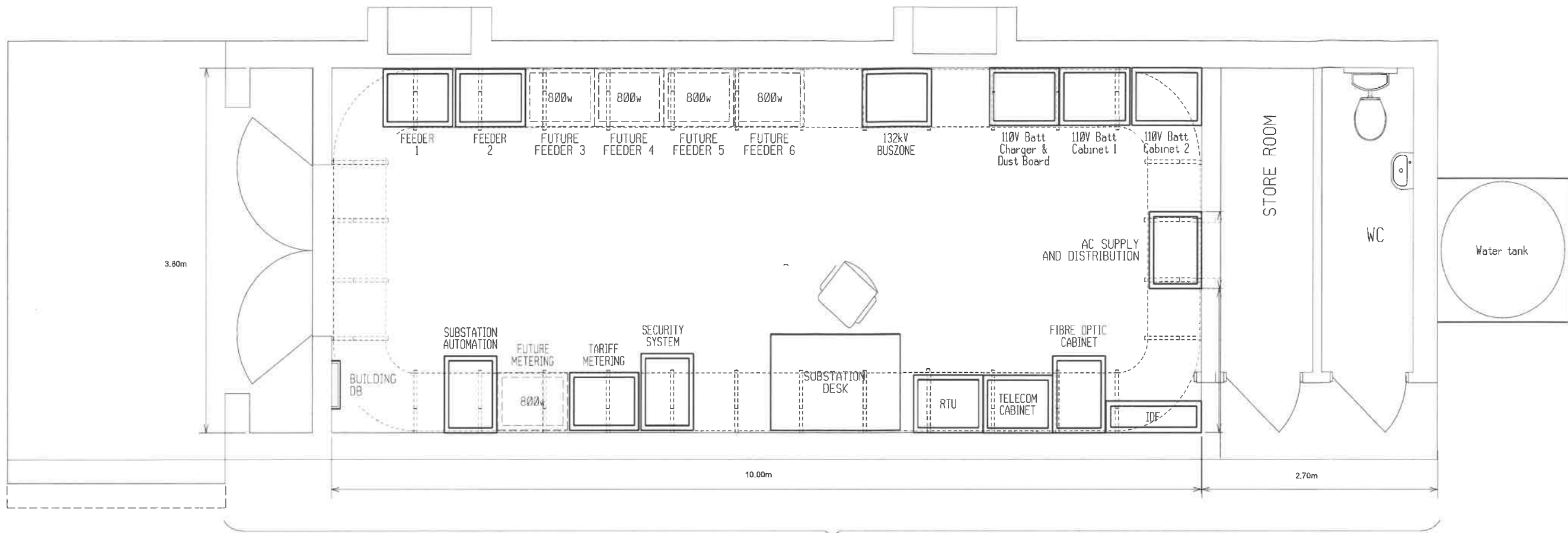
PRELIMINARY
NOT FOR
CONSTRUCTION

ENGINEER'S STAMP

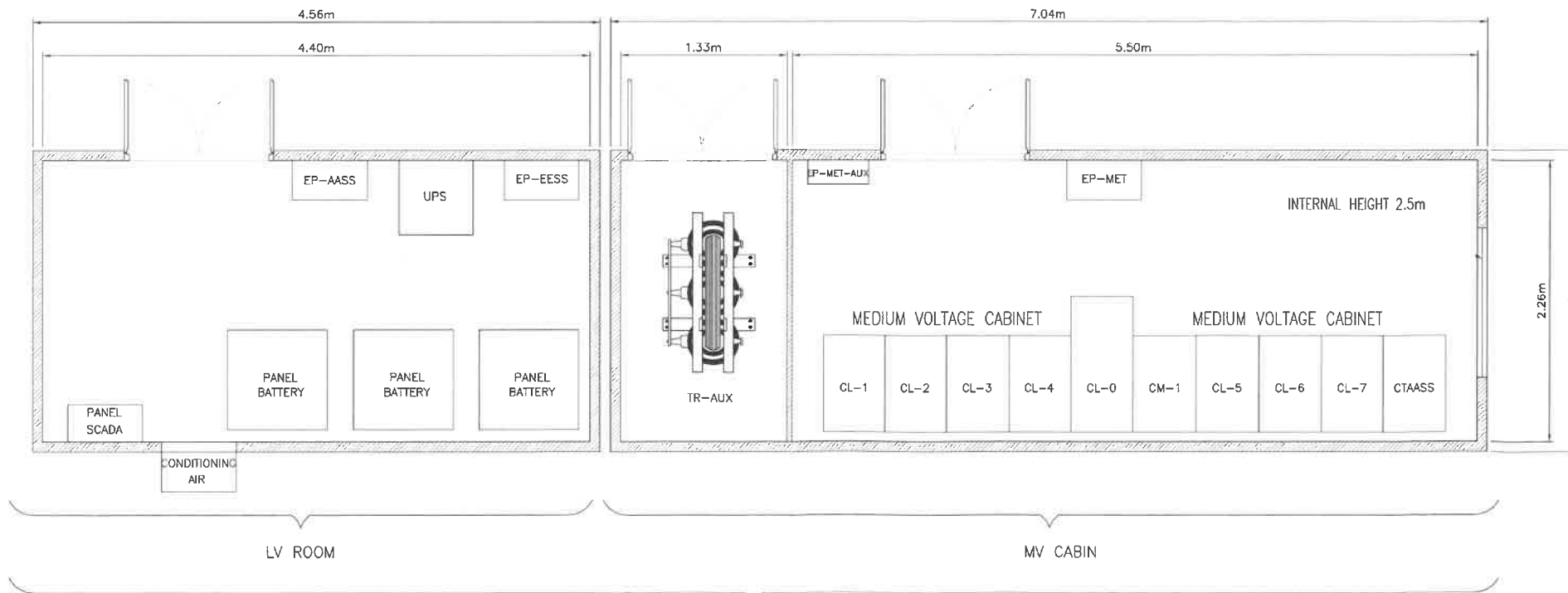
PV POWER GENERATION PLANT

ESKOM CONTROL ROOM
INTERCONNECTION CABIN

SOUTH AFRICA



ESKOM CONTROL ROOM



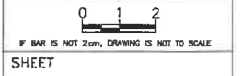
INTERCONNECTION CABIN

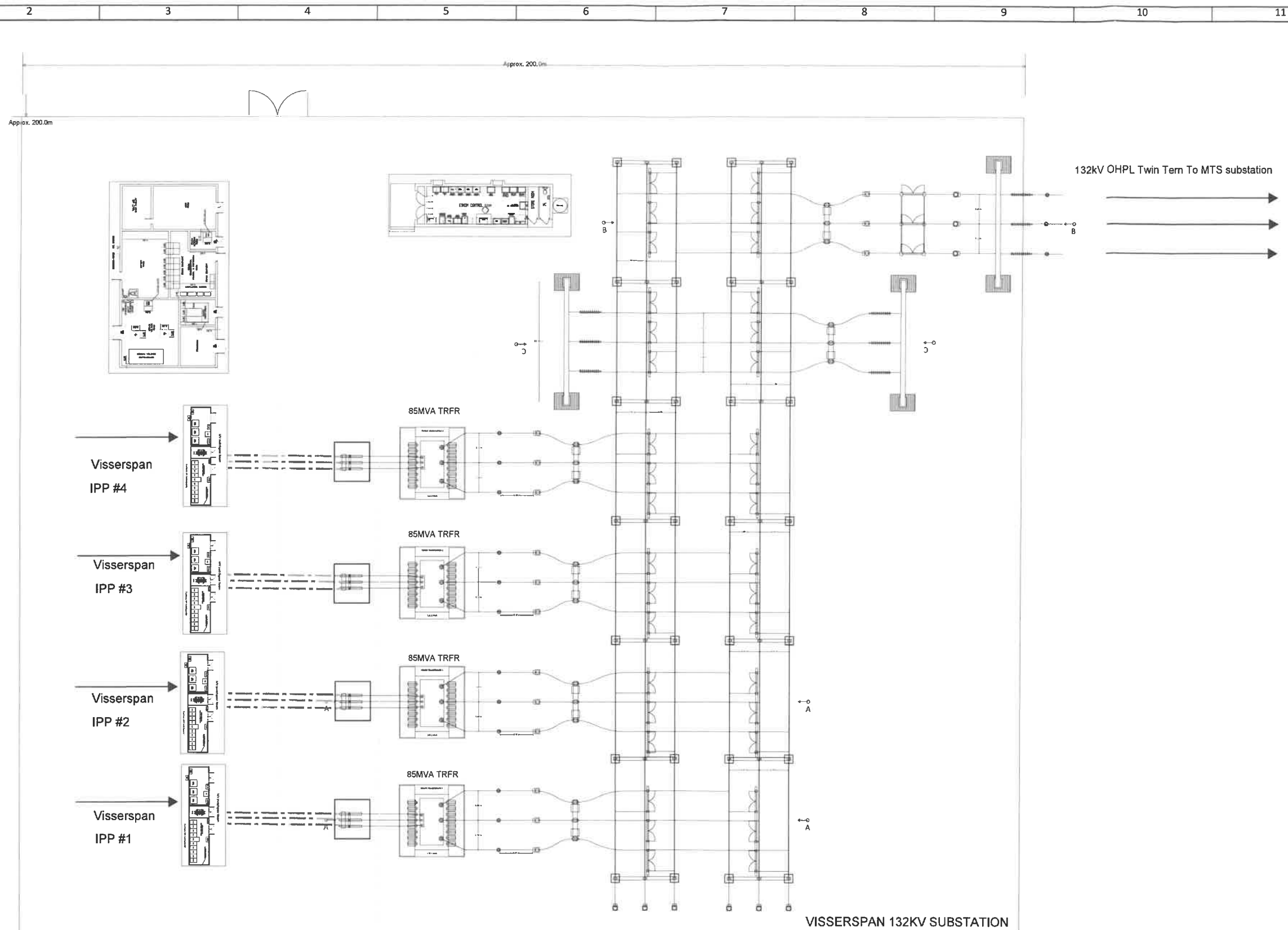
NOTE:

- FISCAL MEASUREMENT WILL BE DONE IN HV PART OF SUBSTATION. IN MV WILL BE A REDUNDANT MEASUREMENT (NOT FISCAL).
- THIS IS A PRELIMINARY PROPOSAL AND MAY BE SUBJECT TO CHANGE IN FURTHER STAGES OF THE PROJECT.

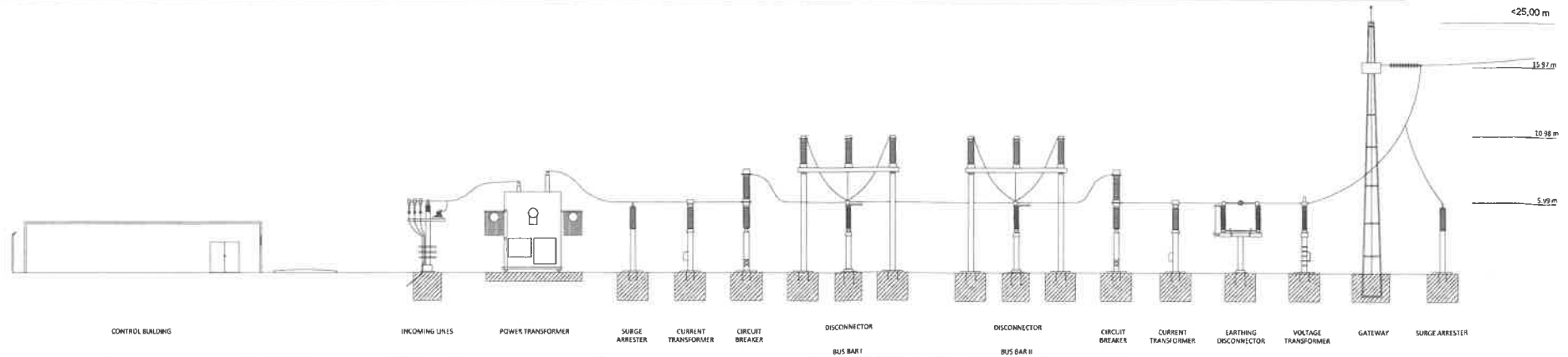
REV	DESIGN #	DESCRIPTION	DATE	DB	CB

OPPORTUNITY	
PROJECT	-
DATE DRAWN	
DRAWN BY	





VISSERSPAN 132KV SUBSTATION



Notes

CHARACTERISTICS OF THE SUBSTATION

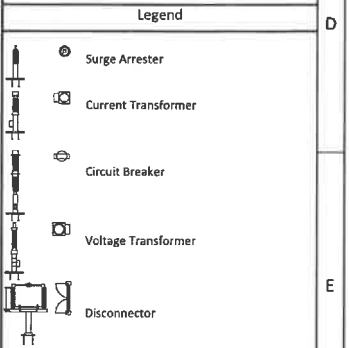
Arrangement: Double busbar
 High voltage: -
 Medium voltage: 33.0 kV
 Substation Capacity: 453.7 MVA
 Number of transformer bays: 3
 Number of outgoing bays: 1

SAFETY DISTANCES

- Between phases: 5.49 m
 - Bay width: 21.96 m
 - Between electrical devices: 5.49 m

SAFETY HEIGHTS

- Device height: 5.99 m
 - Busbar height: 10.98 m
 - Gateway height: 15.97 m



REV	DESCRIPTION	BY	DATE
00	FIRST VERSION	RP	2021-07-29

FOR INFORMATION ONLY

MULILO

CLIENT:

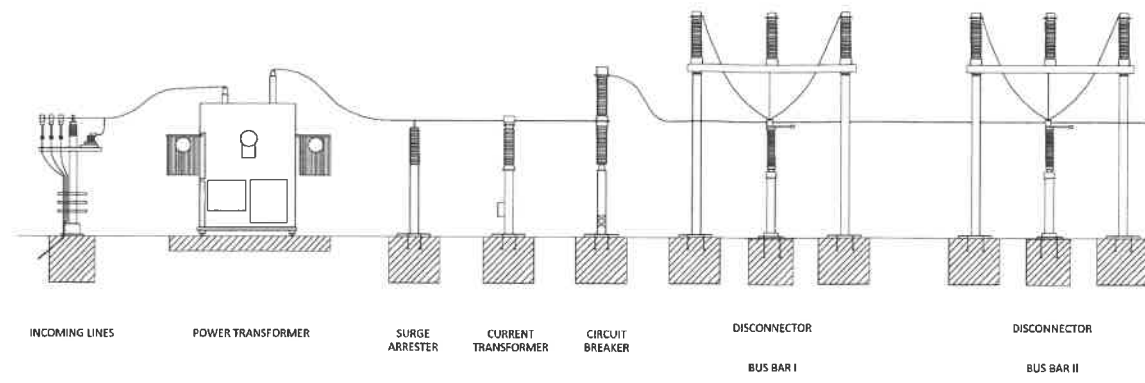
PROJECT: Visserspan IPP Substation and Eskom Switching Station

DRAWING: Double Bus Bar Substation Layout

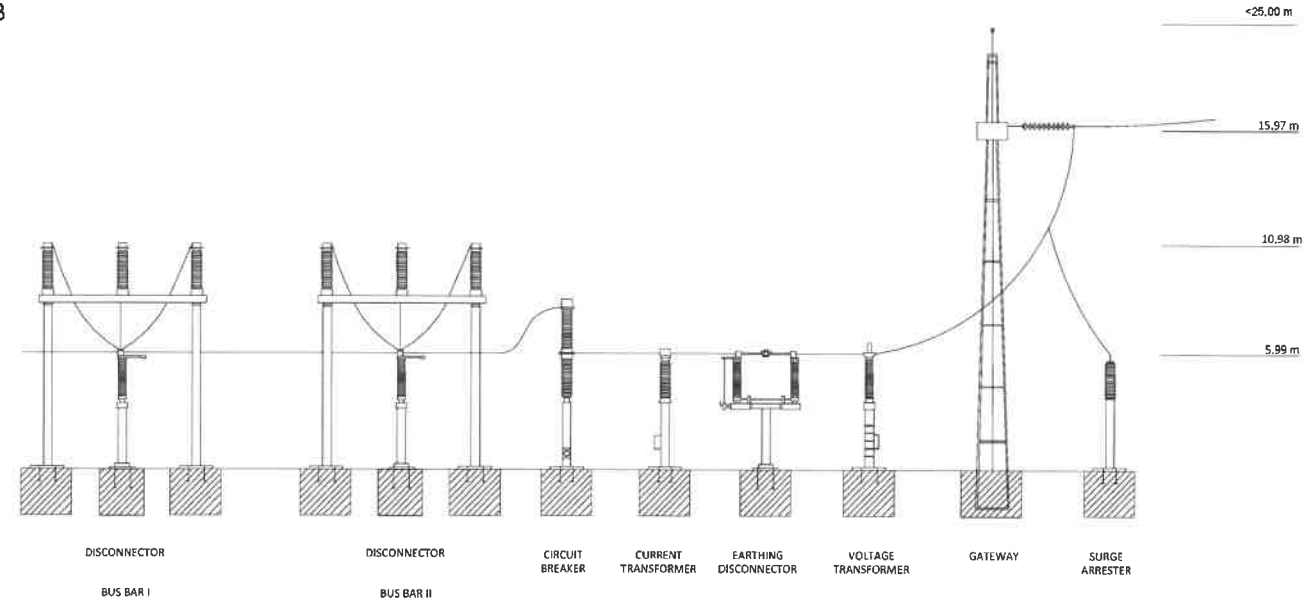
SCALE: Not to scale	SHEET: 1 / 2
REVISION: 00	DATE: 2021-07-29

DIN A2

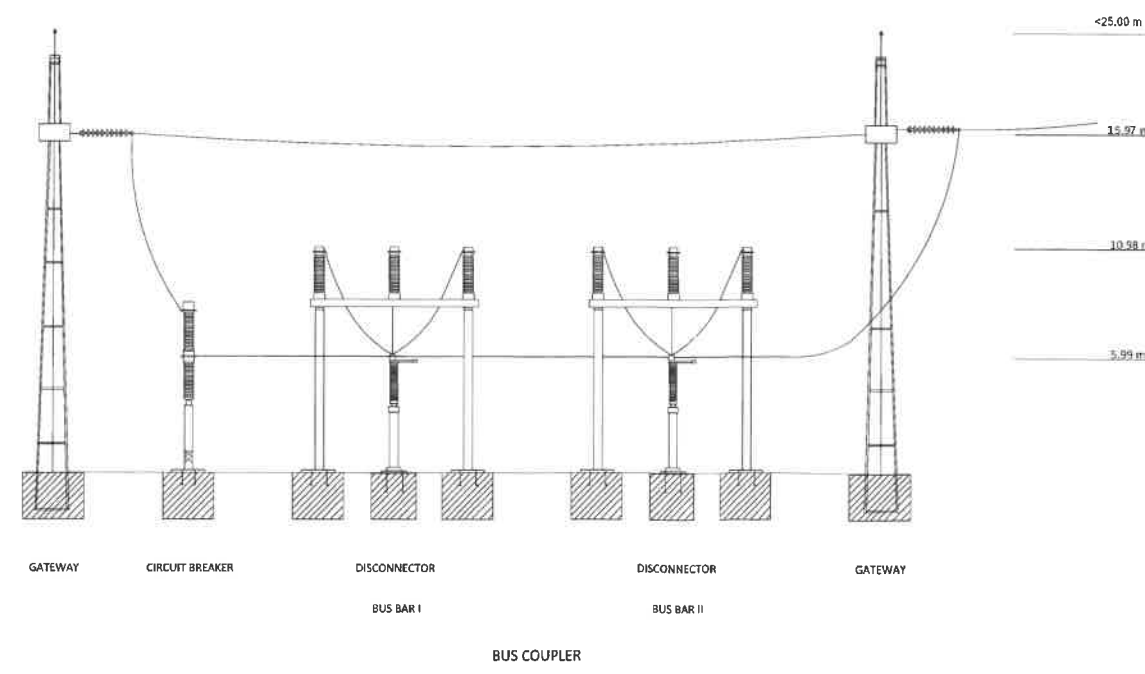
SECTION A-A



SECTION B-B



SECTION C-C



Notes

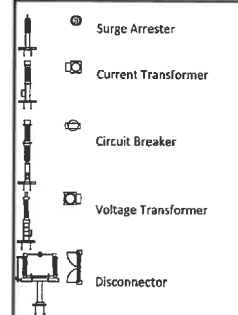
CHARACTERISTICS OF THE SUBSTATION

Arrangement: Double busbar
 Medium voltage: 33.0 kV
 Substation Capacity: 453.7 MVA
 Number of transformer bays: 3
 Number of outgoing bays: 1

SAFETY DISTANCES
 - Between phases: 5.49 m
 - Bay width: 21.96 m
 - Between electrical devices: 5.49 m

SAFETY HEIGHTS
 - Device height: 5.99 m
 - Busbar height: 10.98 m
 - Gateway height: 15.97 m

Legend



NO	FIRST VERSION	RP	2021-07-29
REV	DESCRIPTION	BY	DATE

FOR INFORMATION ONLY

CLIENT:

PROJECT:
 Visserspan
 IPP Substation and Eskom Switching Station

DRAWING:
 Sections

SCALE: Not to scale	SHEET: 2 / 2
REVISION: 00	DATE: 2021-07-29
DIN A2	