

# PROPOSED HARVARD 2 SOLAR PV FACILITY, REMAINDER OF PORTION 5 OF FARM SPES BONA NO. 2355, BLOEMFONTEIN



**SITE CO-ORDINATES:**  
(Approximate centre point)

**29° 07' 45.00" S,  
26° 05' 58.00" E.**

 **PROPOSED SITE**

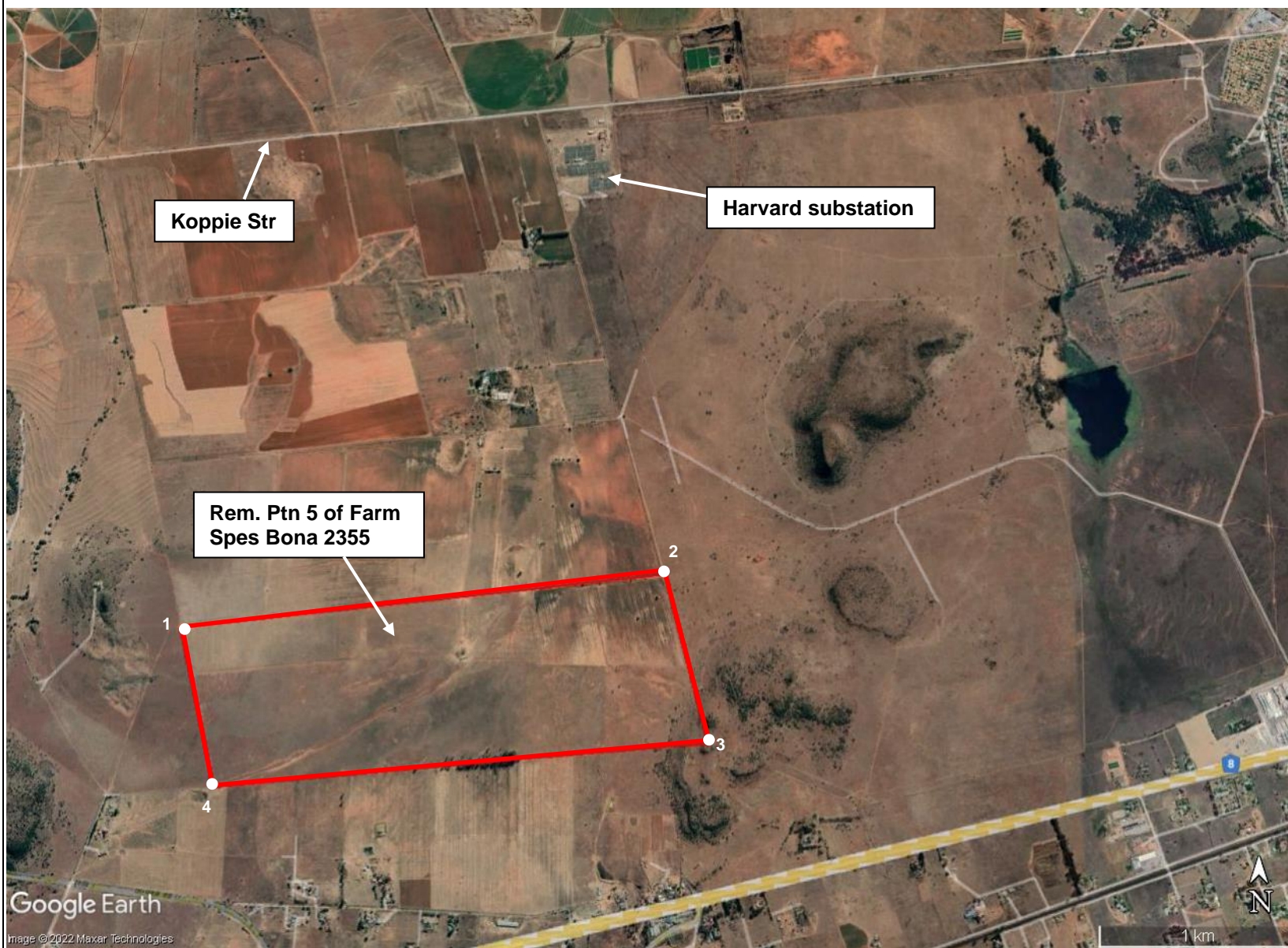
**DFFE REF:**  
TBC

**ENVIROAFRICA REF:**  
0546  
May 2022





# PROPOSED HARVARD 2 SOLAR PV FACILITY, REMAINDER OF PORTION 5 OF FARM SPES BONA NO. 2355, BLOEMFONTEIN



## SITE CO-ORDINATES:

Point 1: 29° 07' 36.00" S,  
26° 05' 06.30" E.

Point 2: 29° 07' 27.40" S,  
26° 06' 38.50" E.

Point 3: 29° 07' 55.00" S,  
26° 06' 47.00" E.

Point 4: 29° 08' 02.00" S,  
26° 05' 13.30" E.

 PROPOSED  
HARVARD 2 SOLAR  
PV FACILITY

DFFE REF:  
TBC

ENVIROAFRICA REF:  
0546

May 2022

