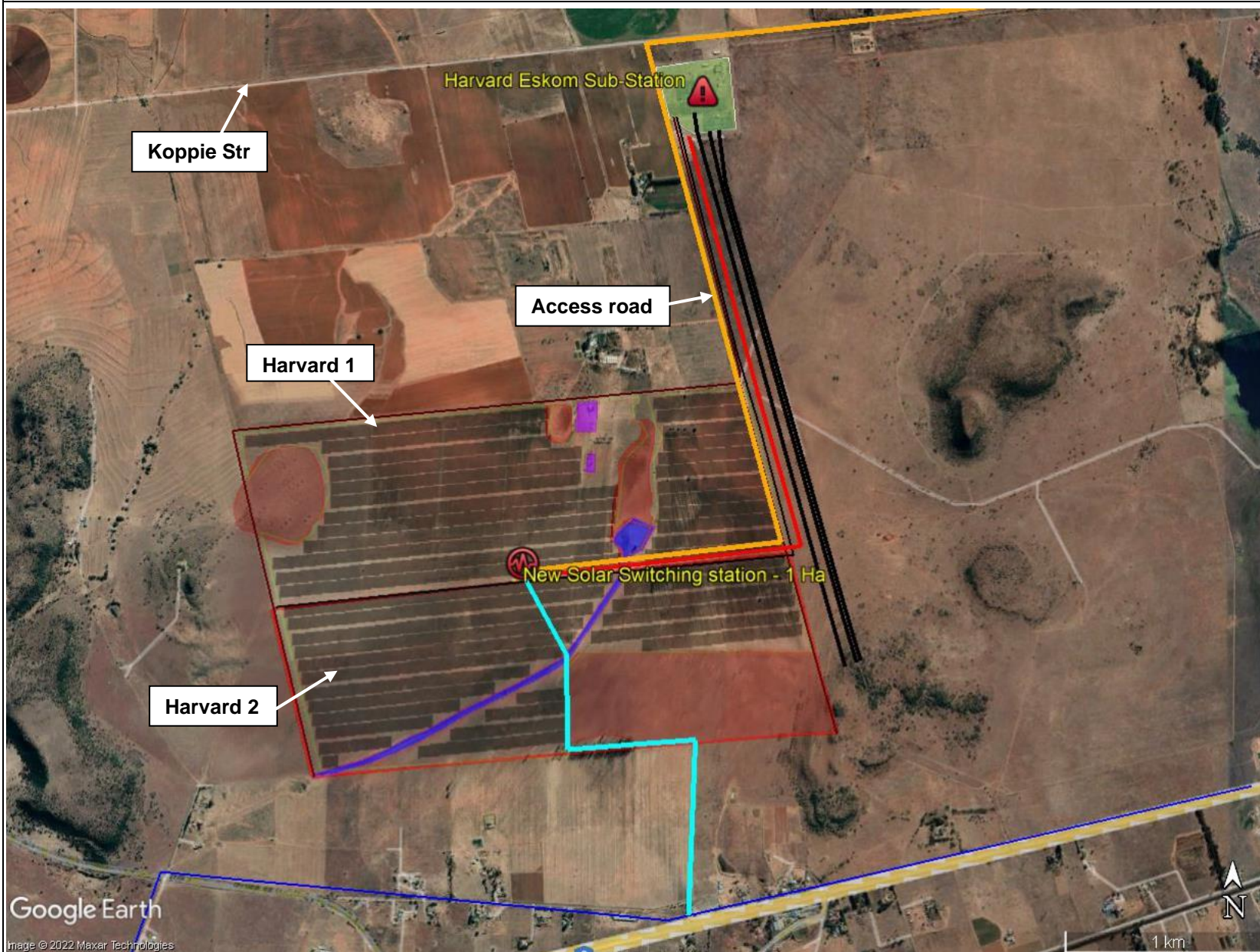







PROPOSED HARVARD 2 SOLAR PV FACILITY, REMAINDER OF PORTION 5 OF FARM SPES BONA NO. 2355, BLOEMFONTEIN



DEVELOPMENT AREAS

-  Solar Panels
-  Harvard Substation
-  Access road
-  Overhead Grid Connection
-  Water pipeline

EXISTING INFRASTRUCTURE

-  Eskom Powerlines
-  Bloemwater Reticulation

IDENTIFIED NO-GO AREAS

-  Sensitive Areas
-  Heritage Sensitive Areas
-  Drainage channel and wetland



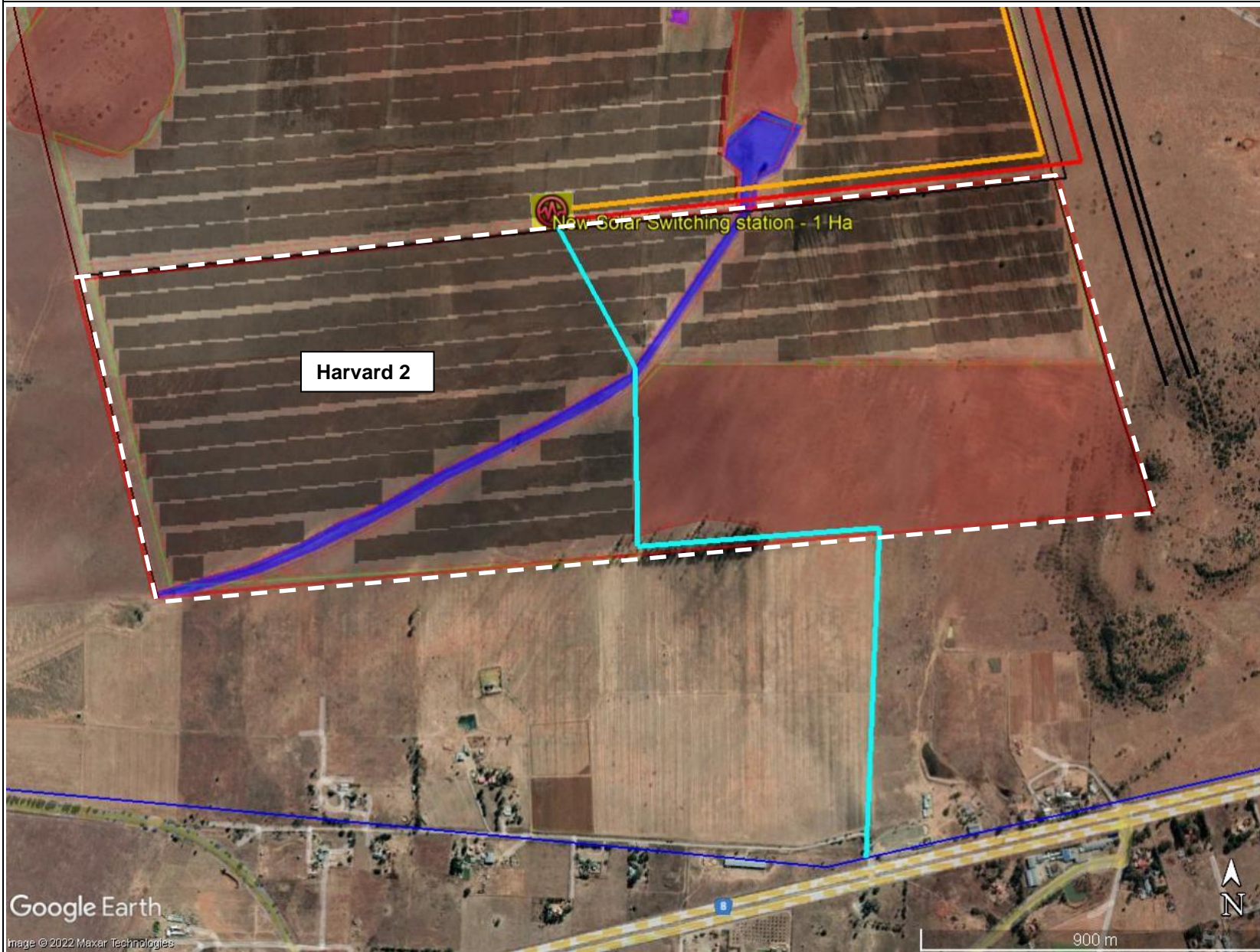
Google Earth

Image © 2022 Maxar Technologies

1 km



PROPOSED HARVARD 2 SOLAR PV FACILITY REMAINDER OF PORTION 5 OF FARM SPES BONA NO. 235, BLOEMFONTEIN



DEVELOPMENT AREAS

Harvard 2 Facility

Solar Panels

Access road

Overhead Grid Connection

Water pipeline

EXISTING INFRASTRUCTURE

Eskom Powerlines

Bloemwater Reticulation

IDENTIFIED NO-GO AREAS

Sensitive Areas

Heritage Sensitive Areas

Drainage channel and wetland

