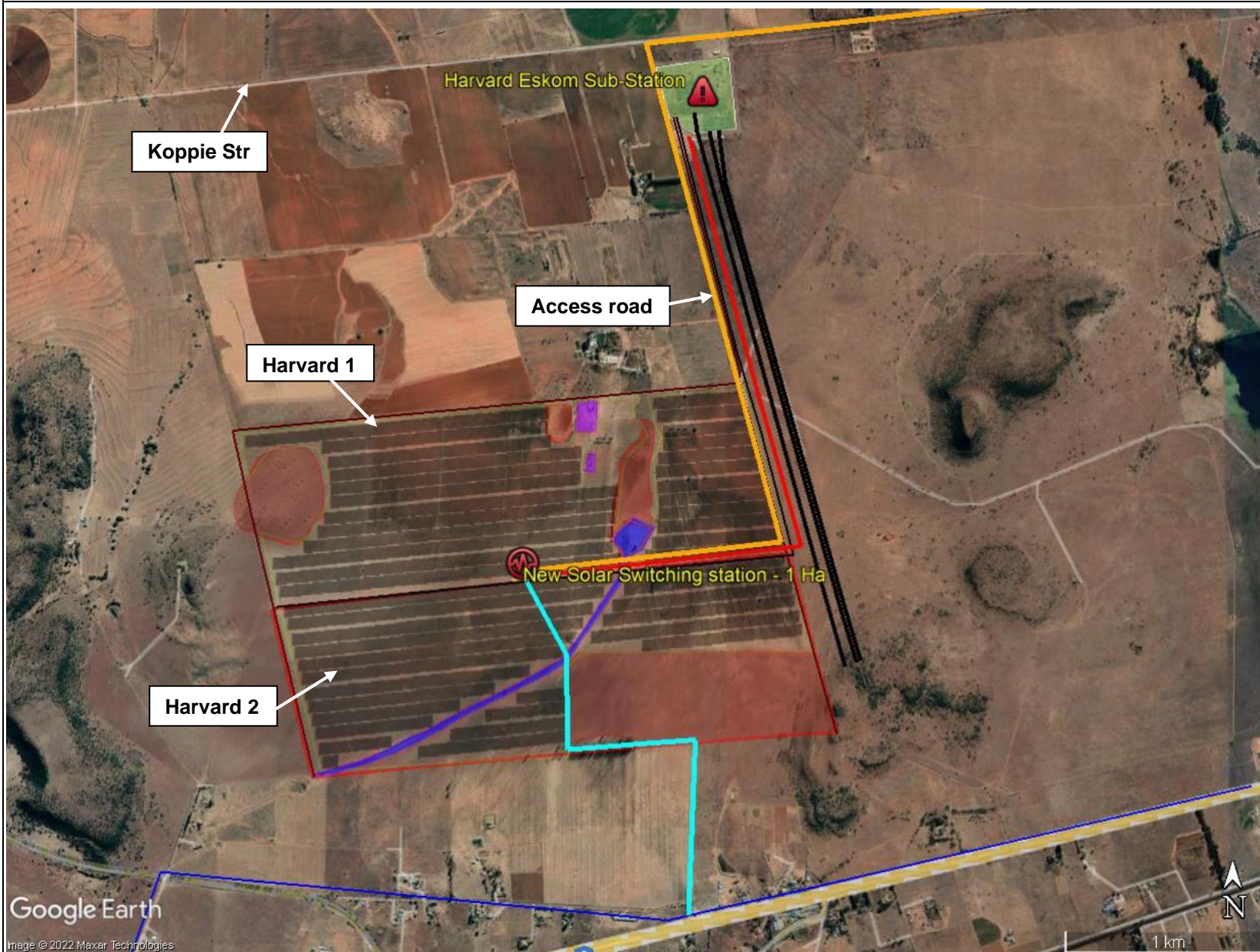







PROPOSED HARVARD 1 SOLAR PV FACILITY AND GRID CONNECTION, REMAINDER OF PORTION 8 OF FARM SPES BONA NO. 2355, AND REMAINDER OF FARM 2300, BLOEMFONTEIN



DEVELOPMENT AREAS

-  Solar Panels
-  Harvard Substation
-  Access road
-  Overhead Grid Connection
-  Water pipeline

EXISTING INFRASTRUCTURE

-  ESKOM Powerlines
-  Bloemwater Reticulation

IDENTIFIED NO-GO AREAS

-  Sensitive Areas
-  Heritage Sensitive Areas
-  Drainage channel and wetland



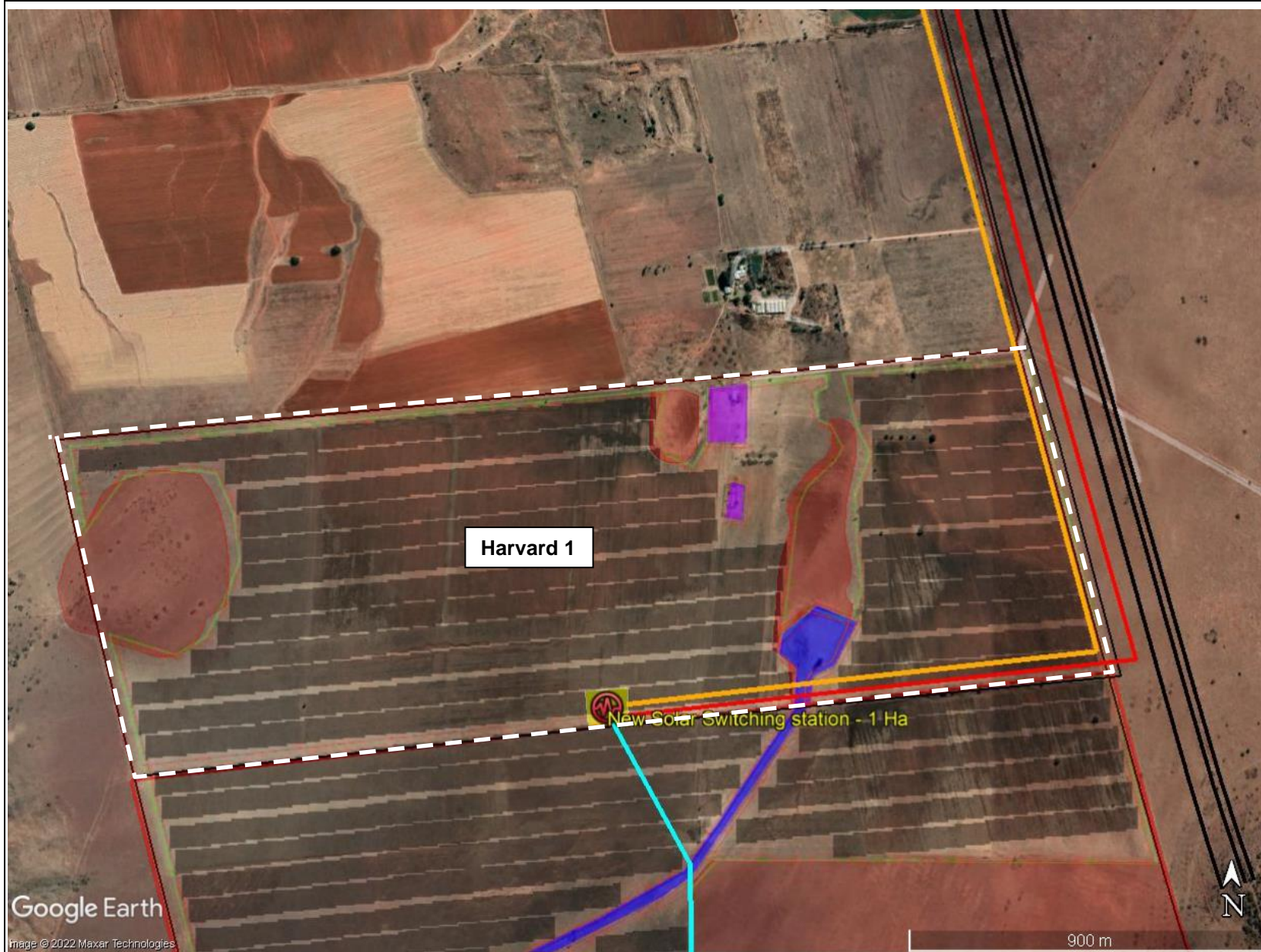
Google Earth

Image © 2022 Maxar Technologies

1 km



PROPOSED HARVARD 1 SOLAR PV FACILITY AND GRID CONNECTION, REMAINDER OF PORTION 8 OF FARM SPES BONA NO. 2355, AND REMAINDER OF FARM 2300, BLOEMFONTEIN



DEVELOPMENT AREAS

 Harvard 1 Facility

 Solar Panels

 Access road

 Overhead Grid Connection

 Water pipeline

EXISTING INFRASTRUCTURE

 Eskom Powerlines

 Bloemwater Reticulation

IDENTIFIED NO-GO AREAS

 Sensitive Areas

 Heritage Sensitive Areas

 Drainage channel and wetland



EnviroAfrica

EnviroAfrica Management Services (Pty) Ltd. Registration No. 2015/0000000/08