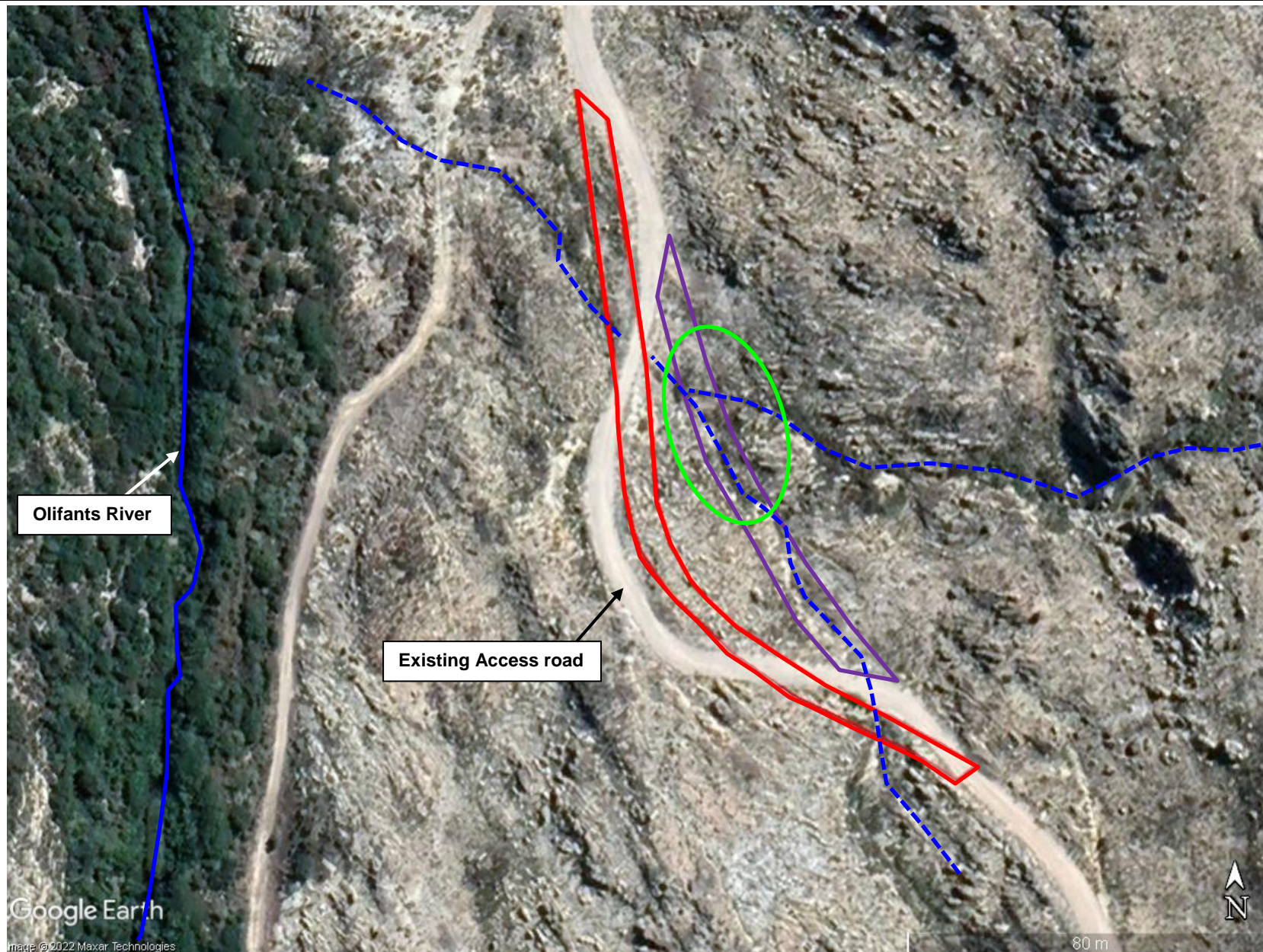


PROPOSED BRIDGE AND GRAVEL ROAD UPGRADE ON PORTION 3 OF FARM VISGAT 207, AND PORTION 2 OF FARM ROSENDAL 304, WITZENBERG VALLEY



Site Sensitivities

-  Olifants River
-  Non-perennial Streams
-  Sensitive Habitat

Proposed Development

-  Preferred Route – Road Section 2
-  Alternative 1 – Road Section 2

June 2022



EnviroAfrica

environmental management and impact assessment | engineering and construction