

Farm Visgat Biodiversity Map – Western Cape Biosphere Spatial Plan (Bridge and Road Section 1)



### Farm Visgat - Biodiversity Map

**Legend**

- BSP Protected Areas
- BSP ESA: Restore**
  - ESA2: Restore from other land use
- BSP ESA**
  - ESA: Aquatic
  - ESA: Terrestrial
- BSP CBA**
  - CBA: Terrestrial
  - CBA: River
  - CBA: Wetland
- VEGMAP 2018**
  - FFs 5 Winterhoek Sandstone Fynbos
- Rivers (DWS)**
  - Unknown type
- Rivers**
  - Perennial
  - Non-Perennial

**Map Center:** Lon: 19°13'3"E  
Lat: 33°4'48.2"S

**Scale:** 1:8 659

**Date created:** June 28, 2022

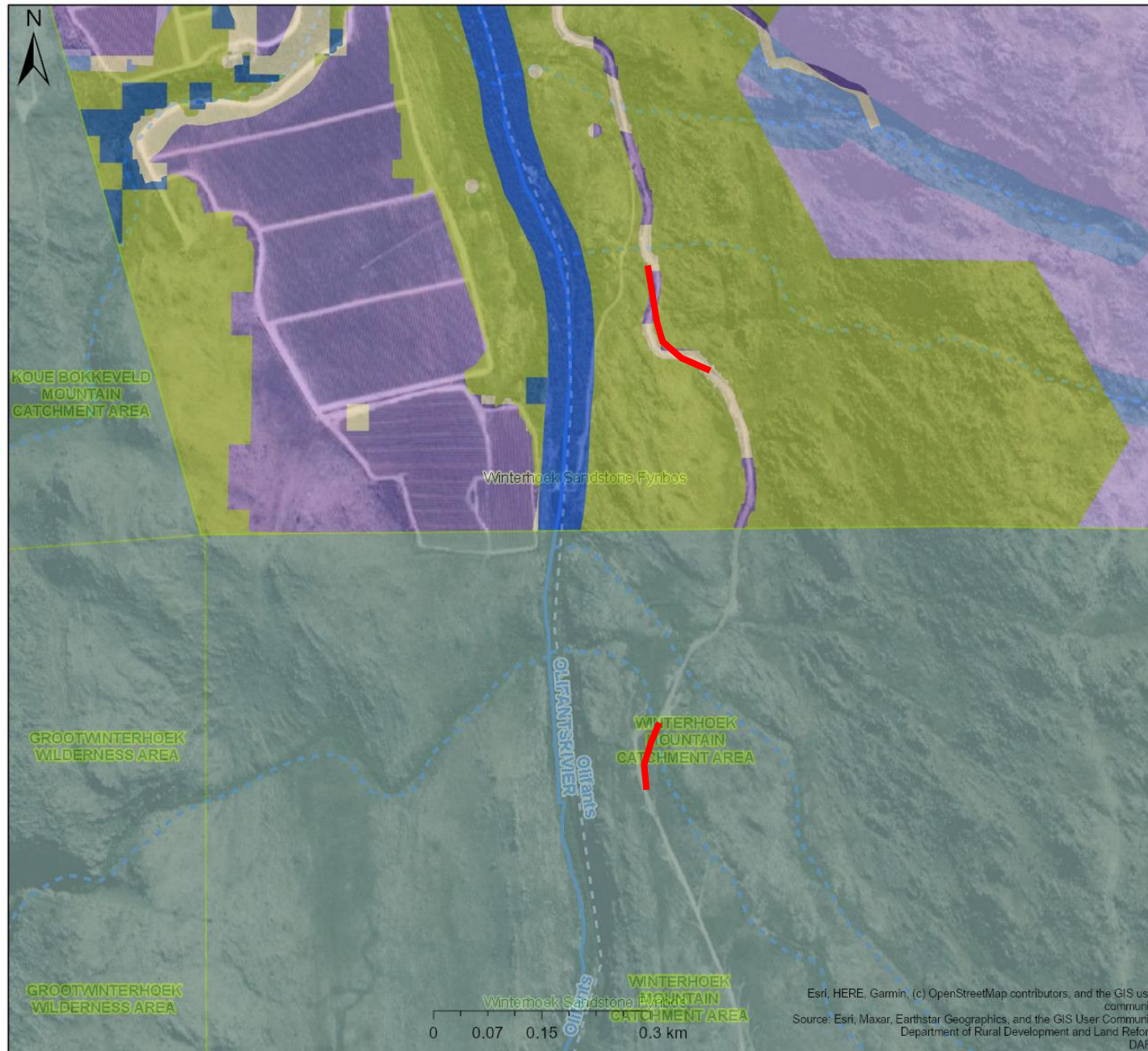
Esri, HERE, Garmin, (c) OpenStreetMap contributors, and the GIS user community  
Source: Esri, Maxar, Earthstar Geographics, and the GIS User Community  
Department of Rural Development and Land Reform, DAFF



**Western Cape Government**  
**FOR YOU**

Agriculture

Farm Visgat Biodiversity Map – Western Cape Biosphere Spatial Plan (Road Sections 2 and 3)



## Farm Visgat - Biodiversity Map

### Legend

- BSP Protected Areas
- BSP ESA: Restore**
- ESA2: Restore from other land use
- BSP ESA**
- ESA: Aquatic
- ESA: Terrestrial
- BSP CBA**
- CBA: Terrestrial
- CBA: River
- CBA: Wetland
- VEGMAP 2018**
- FFs 5 Winterhoek Sandstone Fynbos
- Rivers (DWS)**
- Unknown type
- Rivers**
- Perennial
- Non-Perennial

**Map Center:** Lon: 19°13'8.9"E  
Lat: 33°5'21.6"S

**Scale:** 1:8 659

**Date created:** June 28, 2022



**Western Cape Government**  
**FOR YOU**

Agriculture

Esri, HERE, Garmin, (c) OpenStreetMap contributors, and the GIS user community  
Source: Esri, Maxar, Earthstar Geographics, and the GIS User Community  
Department of Rural Development and Land Reform  
DAFF