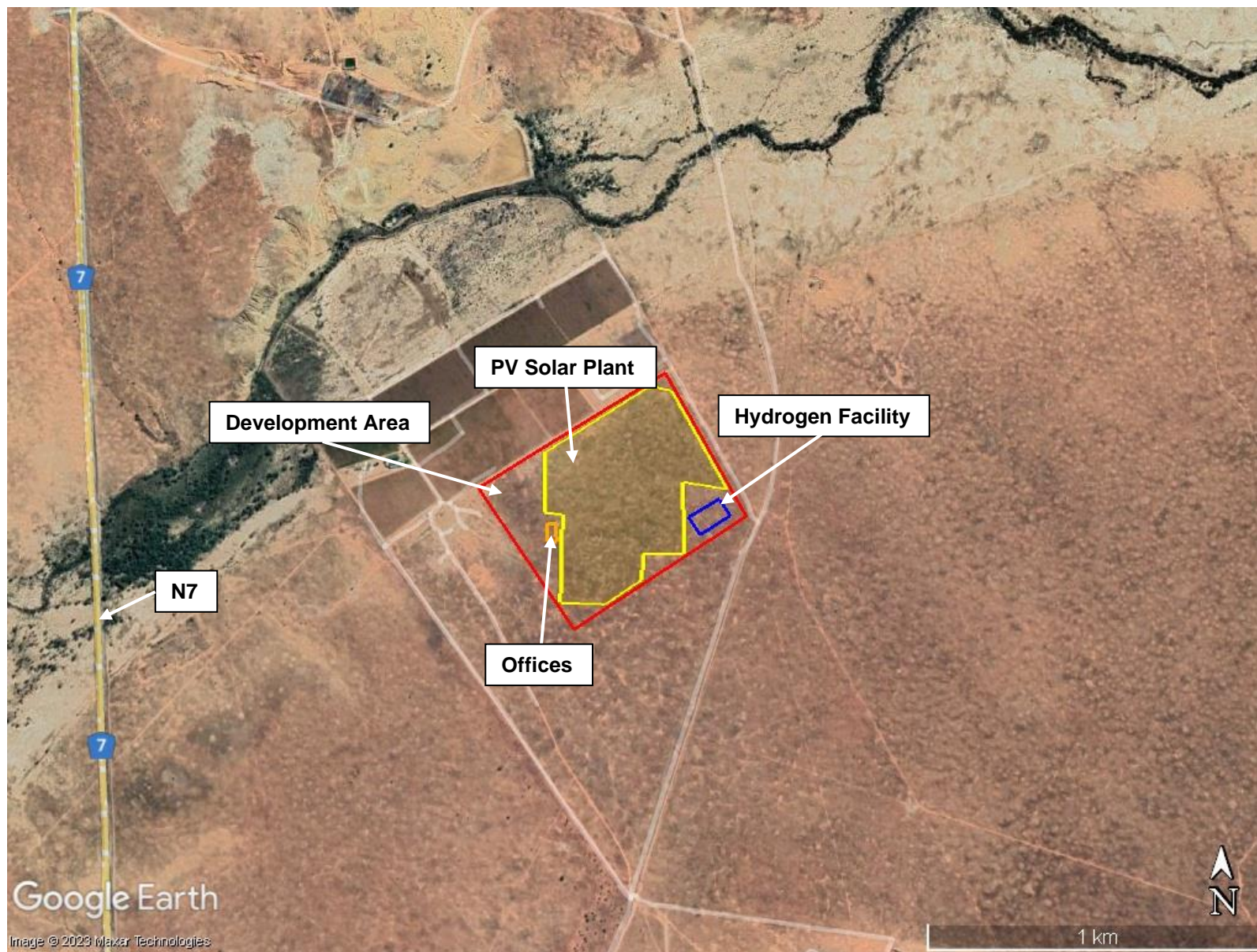






THE PROPOSED AMENDMENT OF THE ROMA ENERGY VANRHYNSDORP PV SOLAR FACILITY ON THE REMAINDER OF THE FARM DE DUINEN NO. 258 NEAR VANRHYNSDORP



SITE CO-ORDINATES

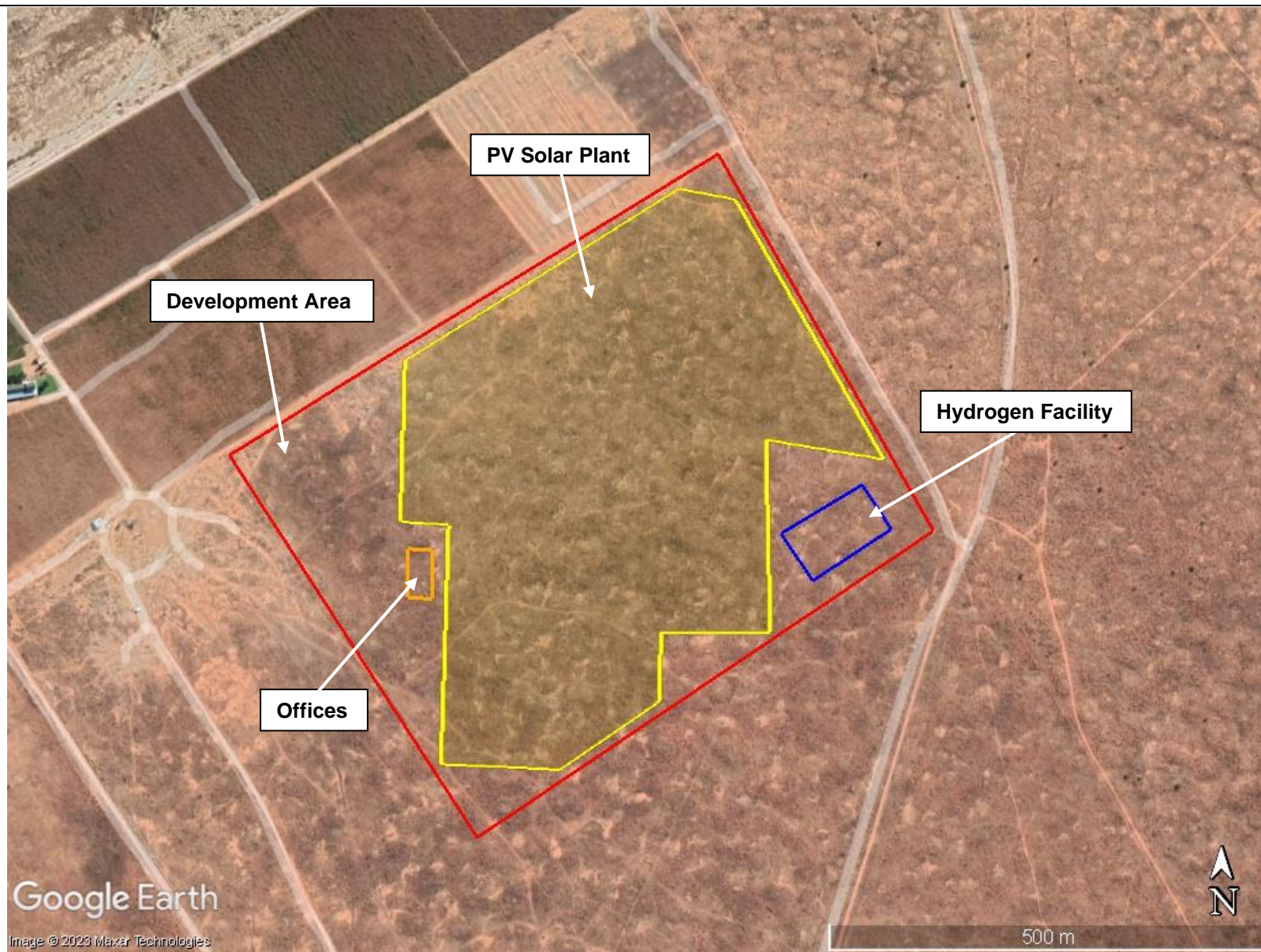
31°34'46.029"S
18°44'46.910"E

-  Development Area
-  PV Solar Plant
-  Hydrogen Facility
-  Offices

April 2023







THE PROPOSED AMENDMENT OF THE ROMA ENERGY VANRHYNSDORP PV SOLAR FACILITY ON THE REMAINDER OF THE FARM DE DUINEN NO. 258 NEAR VANRHYNSDORP



SITE CO-ORDINATES

31°34'46.029"S
18°44'46.910"E

-  Development area
-  PV Solar Plant
-  Hydrogen Facility
-  Offices

April 2023

