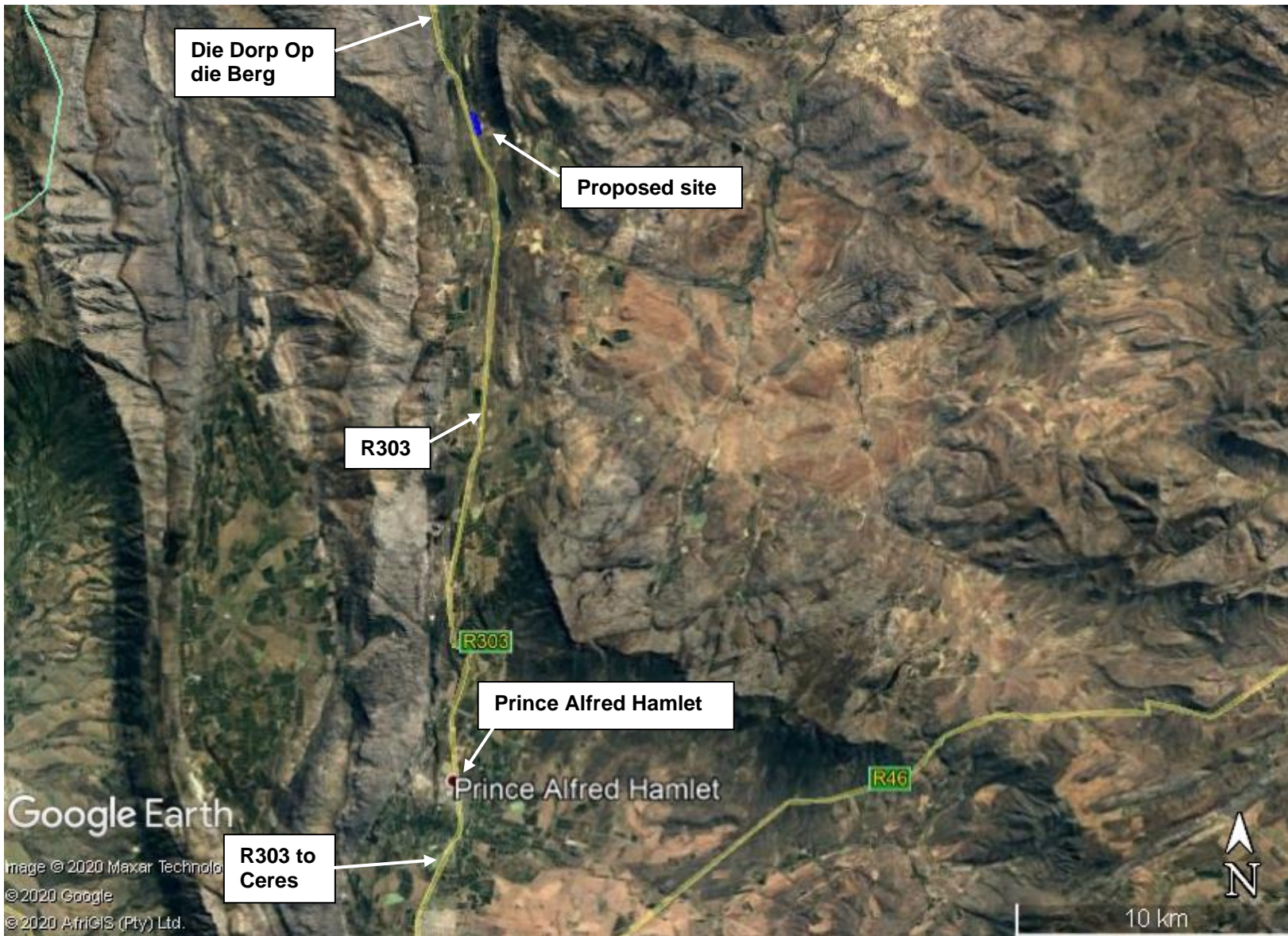


PROPOSED DEVELOPMENT OF A DAM ON FARM KLEINVLEI 209, PORTION 1, CERES, WESTERN CAPE



SITE CO-ORDINATES

33° 04' 02.00"S
19° 19' 57.59"E

 PROPOSED SITE

DEADP REF:

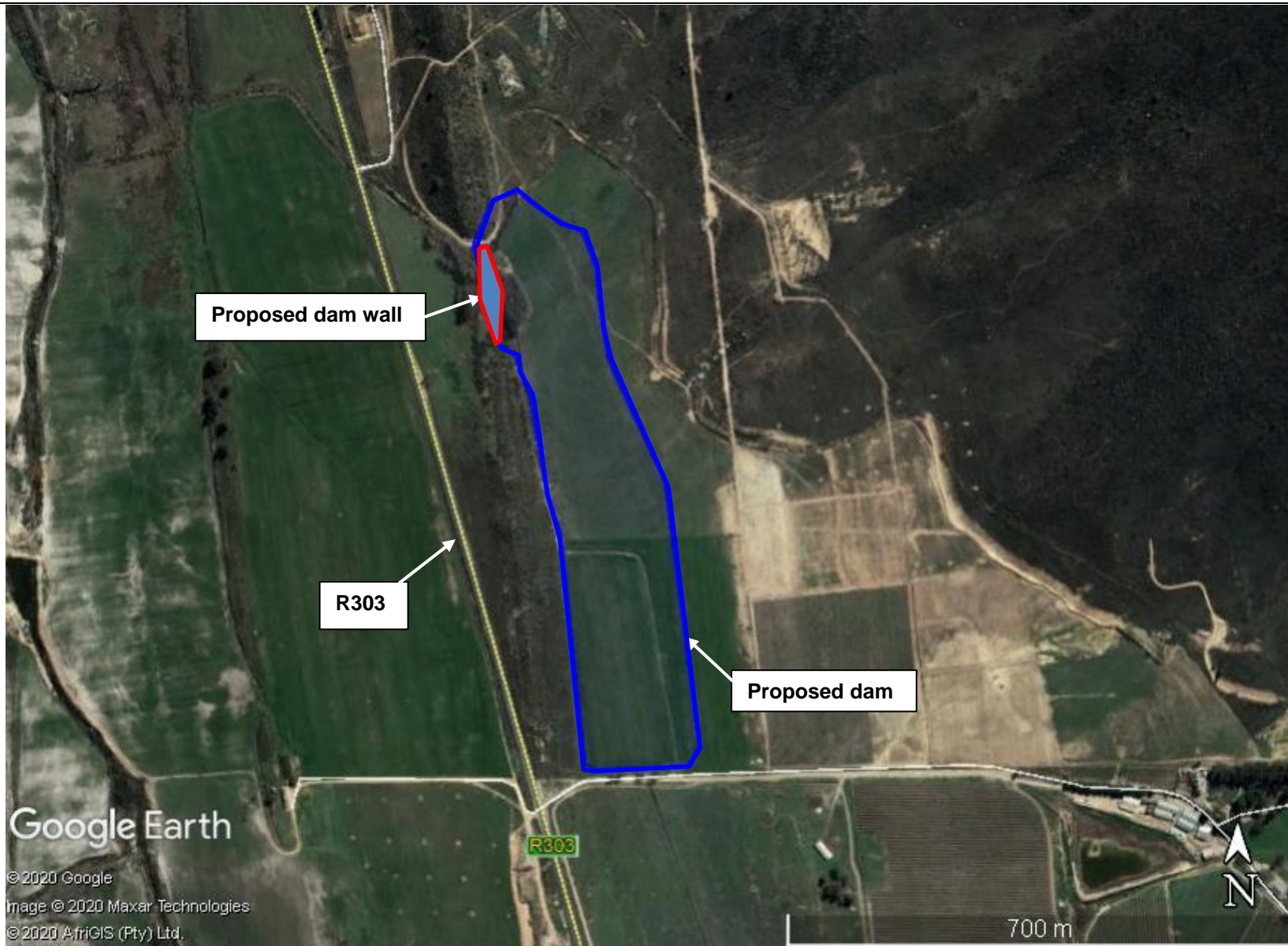
ENVIROAFRICA REF:

0501

March 2023





PROPOSED DEVELOPMENT OF A DAM ON FARM KLEINVLEI 209, PORTION 1, CERES, WESTERN CAPE



SITE CO-ORDINATES

33° 04' 02.00"S
19° 19' 57.59"E

-  PROPOSED DAM WALL
-  PROPOSED DAM

DEADP REF:

ENVIRO AFRICA REF:

0501

March 2023

