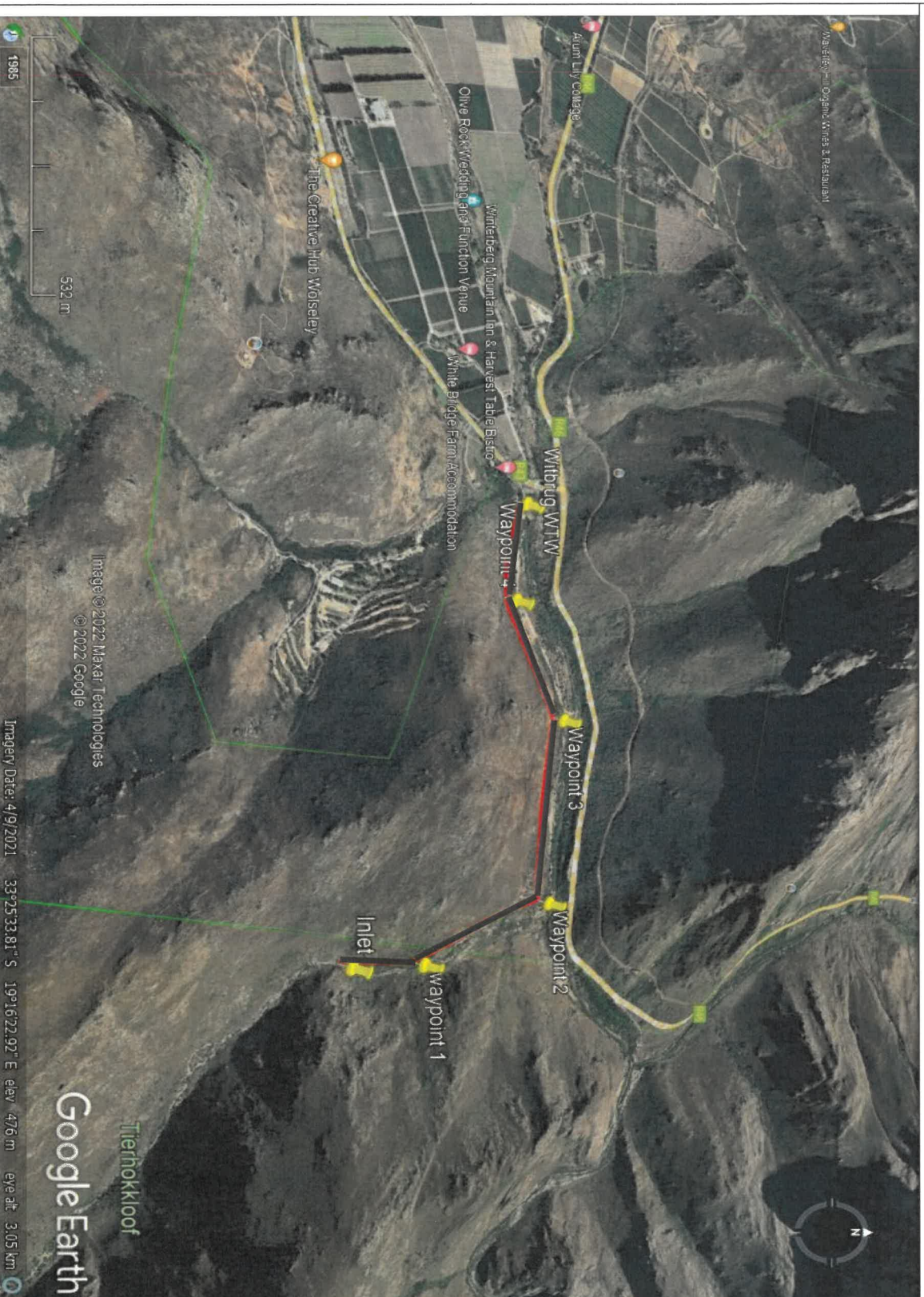


PROPOSED 2.5KM WOLSELEY WATER SUPPLY PIPELINE ON ERVEN 1886 AND 1887, CERES



SITE CO-ORDINATES:

Start:	33° 25' 44.30" S
	19° 17' 01.32" E
Way 1:	33° 25' 33.24" S
	19° 17' 04.28" E
Way 2:	33° 25' 15.26S"
	19° 16' 59.02E"
Way 3:	33° 25' 11.08S"
	19° 16' 32.39E"
Way 4:	33° 25' 19.49S"
	19° 16' 13.85E"
End:	33° 25' 18.53S"
	19° 16' 00.07E"

— Proposed pipeline route

ENVIRO AFRICA

November 2022

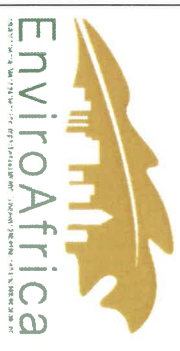


Image © 2022 Maxar Technologies © 2022 Google Imagery Date: 4/9/2021 33°25'33.81" S 19°16'22.92" E elev 476 m eye alt 3.05 km