

# THE PROPOSED DARLING SOLAR PV FACILITY ON PORTION OF ERF 551, DARLING, WESTERN CAPE



## SITE CO-ORDINATES

33° 21' 52.20"S  
18° 22' 39.20"E

 Proposed Site

November 2023

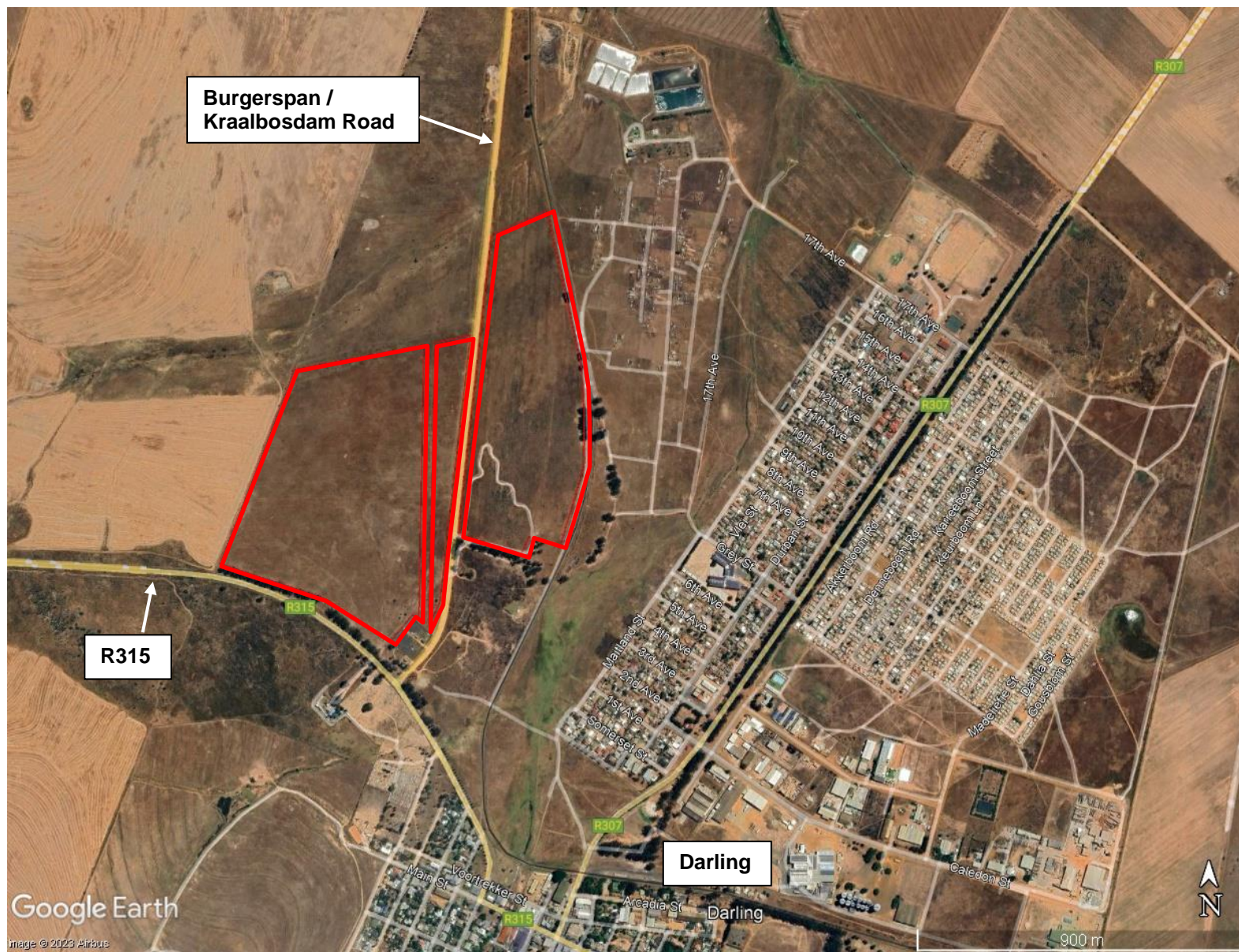


Google Earth

Data SIO, NOAA, U.S. Navy, NGA, GEBCO  
Image © 2023 Airbus

10 km

# THE PROPOSED DARLING SOLAR PV FACILITY ON PORTION OF ERF 551, DARLING, WESTERN CAPE



## SITE CO-ORDINATES

33° 21' 52.20"S  
18° 22' 39.20"E

 Proposed Site

November 2023



EnviroAfrica

environmental Management and impact assessment | longwe@enviroafrica.com | 021 953 1234