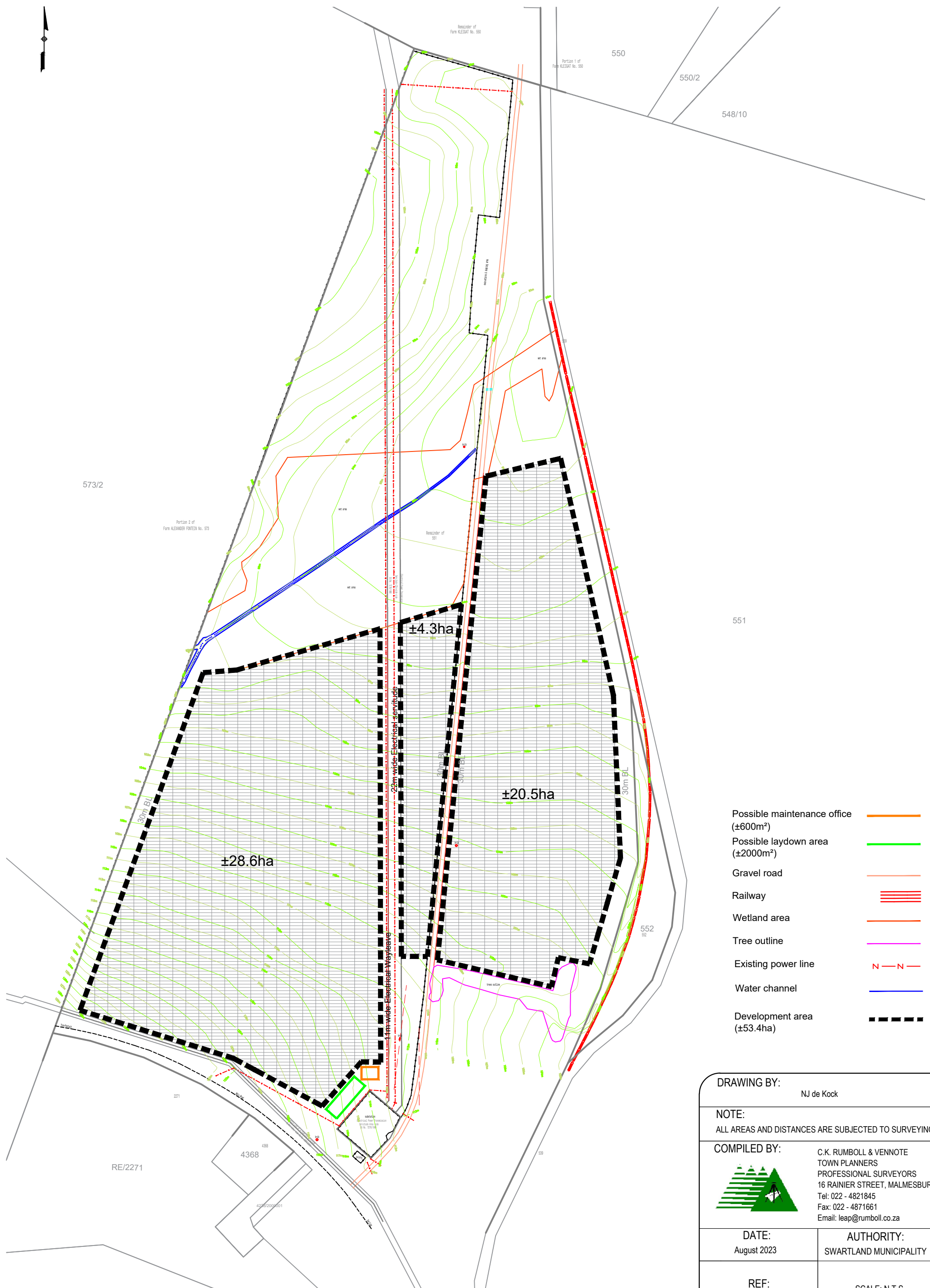


PROPOSED DEVELOPMENT AREA: PORTION OF ERF 551, DARLING



- Possible maintenance office (±600m²) —
- Possible laydown area (±2000m²) —
- Gravel road —
- Railway ≡≡≡
- Wetland area —
- Tree outline —
- Existing power line N — N
- Water channel —
- Development area (±53.4ha) —

DRAWING BY: NJ de Kock	
NOTE: ALL AREAS AND DISTANCES ARE SUBJECTED TO SURVEYING	
COMPILED BY:	C.K. RUMBOLL & VENNOTE TOWN PLANNERS PROFESSIONAL SURVEYORS 16 RAINIER STREET, MALMESBURY Tel: 022 - 4821845 Fax: 022 - 4871661 Email: leap@rumboll.co.za
DATE: August 2023	AUTHORITY: SWARTLAND MUNICIPALITY
REF: DAR/13325/NJdK	SCALE: N.T.S