

**SCREENING REPORT FOR AN ENVIRONMENTAL AUTHORIZATION AS
REQUIRED BY THE 2014 EIA REGULATIONS – PROPOSED SITE
ENVIRONMENTAL SENSITIVITY**

EIA Reference number: .

Project name: Malmesbury Solar PV

Project title: Malmesbury Solar PV

Date screening report generated: 17/11/2023 12:47:22

Applicant: Swartland Municipality

Compiler: EnviroAfrica

Compiler signature:
.....

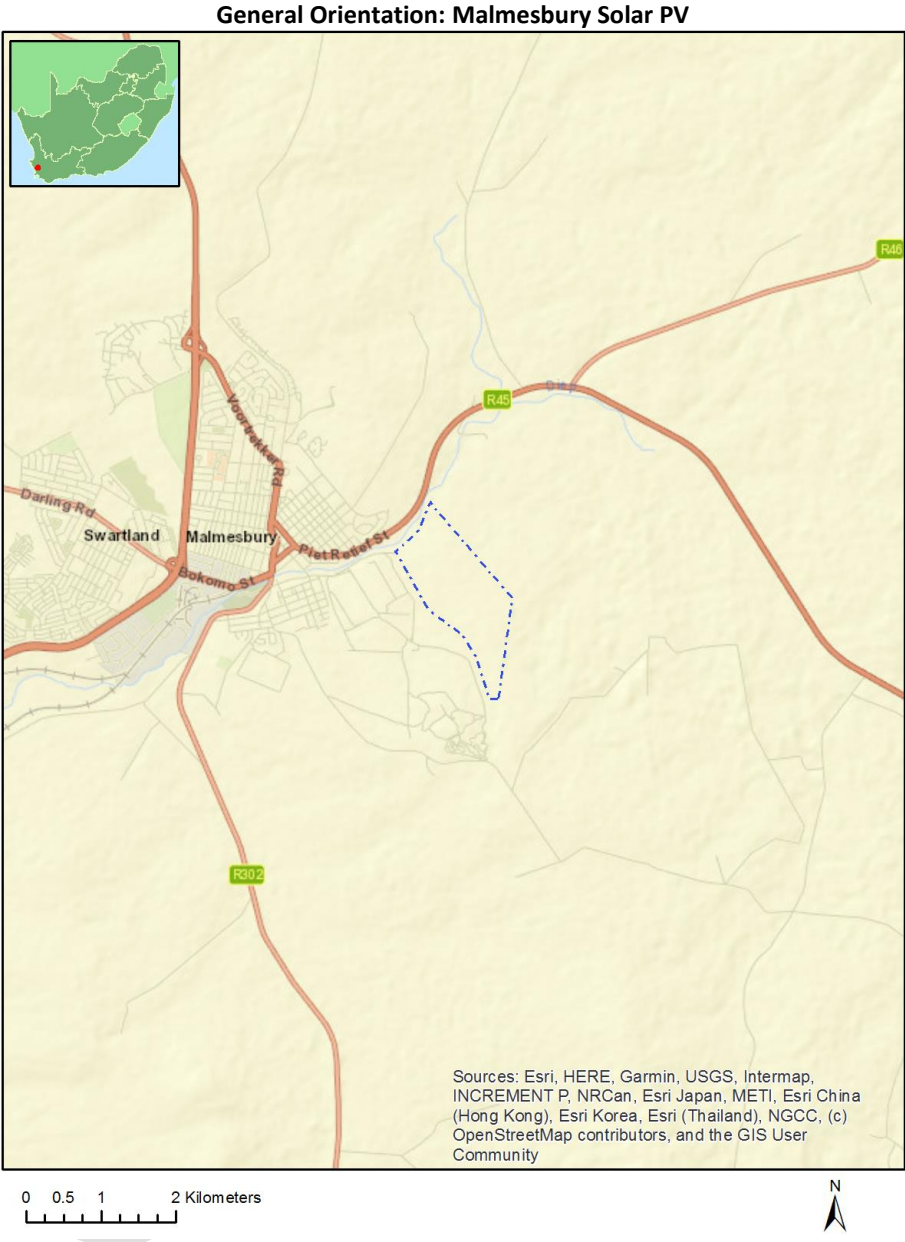
Application Category: Utilities Infrastructure|Electricity|Generation|Renewable|Solar|PV

Table of Contents

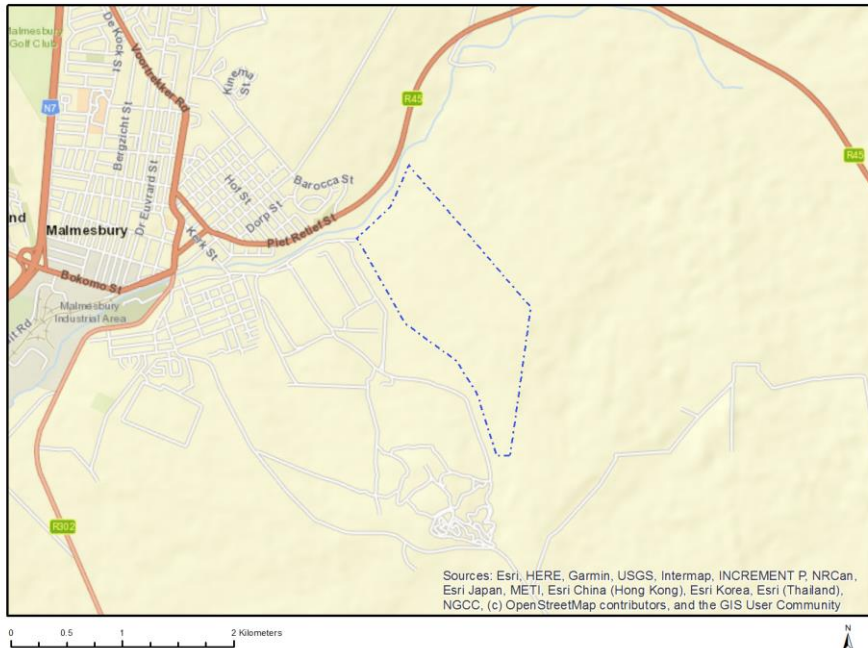
- Proposed Project Location 3
 - Orientation map 1: General location 3
- Map of proposed site and relevant area(s) 4
 - Cadastral details of the proposed site 4
 - Wind and Solar developments with an approved Environmental Authorisation or applications under consideration within 30 km of the proposed area 4
 - Environmental Management Frameworks relevant to the application 5
- Environmental screening results and assessment outcomes 5
 - Relevant development incentives, restrictions, exclusions or prohibitions 5
 - Proposed Development Area Environmental Sensitivity 5
 - Specialist assessments identified 6
- Results of the environmental sensitivity of the proposed area 8
 - MAP OF RELATIVE AGRICULTURE THEME SENSITIVITY 8
 - MAP OF RELATIVE ANIMAL SPECIES THEME SENSITIVITY 9
 - MAP OF RELATIVE AQUATIC BIODIVERSITY THEME SENSITIVITY 10
 - MAP OF RELATIVE ARCHAEOLOGICAL AND CULTURAL HERITAGE THEME SENSITIVITY 11
 - MAP OF RELATIVE AVIAN THEME SENSITIVITY 12
 - MAP OF RELATIVE CIVIL AVIATION (SOLAR PV) THEME SENSITIVITY 13
 - MAP OF RELATIVE DEFENCE THEME SENSITIVITY 14
 - MAP OF RELATIVE LANDSCAPE (SOLAR) THEME SENSITIVITY 15
 - MAP OF RELATIVE PLANT SPECIES THEME SENSITIVITY 16
 - MAP OF RELATIVE RFI THEME SENSITIVITY 19
 - MAP OF RELATIVE TERRESTRIAL BIODIVERSITY THEME SENSITIVITY 20

Proposed Project Location

Orientation map 1: General location



Map of proposed site and relevant area(s)



Cadastral details of the proposed site

Property details:

No	Farm Name	Farm/ Erf No	Portion	Latitude	Longitude	Property Type
1	MALMESBURY	11228	0	33°28'3.3S	18°45'4.39E	Erven
2	MALMESBURY	327	0	33°28'2.95S	18°45'4.33E	Erven
3	MALMESBURY	327	0	33°28'23.17S	18°44'35.29E	Erven

Development footprint¹ vertices:
No development footprint(s) specified.

Wind and Solar developments with an approved Environmental Authorisation or applications under consideration within 30 km of the proposed area

No	EIA Reference No	Classification	Status of application	Distance from proposed area (km)
1	12/12/20/2400/AM2	Solar PV	Approved	23.2
2	12/12/20/2109/AM3	Solar PV	Approved	17.8
3	12/12/20/2400	Solar PV	Approved	23.2
4	12/12/20/2393/AM2	Solar PV	Approved	27.5
5	12/12/20/2109/AM1	Solar PV	Approved	17.8

¹ “development footprint”, means the area within the site on which the development will take place and includes all ancillary developments for example roads, power lines, boundary walls, paving etc. which require vegetation clearance or which will be disturbed and for which the application has been submitted.

6	12/12/20/1985	Solar PV	Approved	27.5
7	12/12/20/2109	Solar PV	Approved	17.8
8	12/12/20/2384	Solar PV	Approved	11.1
9	12/12/20/2638	Wind	Approved	25
10	12/12/20/2109/AM2	Solar PV	Approved	17.8
11	12/12/20/2638/AM2	Wind	Approved	25
12	12/12/20/2393	Solar PV	Approved	27.5
13	12/12/20/2638/AM3	Wind	Approved	25

Environmental Management Frameworks relevant to the application

No intersections with EMF areas found.

Environmental screening results and assessment outcomes

The following sections contain a summary of any development incentives, restrictions, exclusions or prohibitions that apply to the proposed development site as well as the most environmental sensitive features on the site based on the site sensitivity screening results for the application classification that was selected. The application classification selected for this report is:

Utilities Infrastructure | Electricity | Generation | Renewable | Solar | PV.

Relevant development incentives, restrictions, exclusions or prohibitions

The following development incentives, restrictions, exclusions or prohibitions and their implications that apply to this site are indicated below.

Incentive, restriction or prohibition	Implication
Strategic Transmission Corridor-Central corridor	https://screening.environment.gov.za/ScreeningDownloads/DevelopmentZones/Combined_EGI.pdf
Strategic Gas Pipeline Corridors-Phase 1a & 1b: Saldanha to Ankerlig and Saldanha to Mossel Bay	https://screening.environment.gov.za/ScreeningDownloads/DevelopmentZones/Combined_GAS.pdf

Proposed Development Area Environmental Sensitivity

The following summary of the development site environmental sensitivities is identified. Only the highest environmental sensitivity is indicated. The footprint environmental sensitivities for the proposed development footprint as identified, are indicative only and must be verified on site by a suitably qualified person before the specialist assessments identified below can be confirmed.

Theme	Very High sensitivity	High sensitivity	Medium sensitivity	Low sensitivity
Agriculture Theme		X		
Animal Species Theme		X		
Aquatic Biodiversity Theme				X
Archaeological and Cultural Heritage Theme	X			

Avian Theme				X
Civil Aviation (Solar PV) Theme			X	
Defence Theme				X
Landscape (Solar) Theme	X			
Plant Species Theme		X		
RFI Theme				X
Terrestrial Biodiversity Theme	X			

Specialist assessments identified

Based on the selected classification, and the known impacts associated with the proposed development, the following list of specialist assessments have been identified for inclusion in the assessment report. It is the responsibility of the EAP to confirm this list and to motivate in the assessment report, the reason for not including any of the identified specialist study including the provision of photographic evidence of the site situation.

No	Specialist assessment	Assessment Protocol
1	Agricultural Impact Assessment	https://screening.environment.gov.za/ScreeningDownloads/AssessmentProtocols/Gazetted_WindAndSolar_Agriculture_Assessment_Protocols.pdf
2	Landscape/Visual Impact Assessment	https://screening.environment.gov.za/ScreeningDownloads/AssessmentProtocols/Gazetted_General_Requirement_Assessment_Protocols.pdf
3	Archaeological and Cultural Heritage Impact Assessment	https://screening.environment.gov.za/ScreeningDownloads/AssessmentProtocols/Gazetted_General_Requirement_Assessment_Protocols.pdf
4	Palaeontology Impact Assessment	https://screening.environment.gov.za/ScreeningDownloads/AssessmentProtocols/Gazetted_General_Requirement_Assessment_Protocols.pdf
5	Terrestrial Biodiversity Impact Assessment	https://screening.environment.gov.za/ScreeningDownloads/AssessmentProtocols/Gazetted_Terrestrial_Biodiversity_Assessment_Protocols.pdf
6	Aquatic Biodiversity Impact Assessment	https://screening.environment.gov.za/ScreeningDownloads/AssessmentProtocols/Gazetted_Aquatic_Biodiversity_Assessment_Protocols.pdf
7	Civil Aviation Assessment	https://screening.environment.gov.za/ScreeningDownloads/AssessmentProtocols/Gazetted_Civil_Aviation_Installations_Assessment_Protocols.pdf
8	Defense Assessment	https://screening.environment.gov.za/ScreeningDownloads/AssessmentProtocols/Gazetted_Defence_Installations_Assessment_Protocols.pdf
9	RFI Assessment	https://screening.environment.gov.za/ScreeningDownloads/AssessmentProtocols/Gazetted_General_Requirement_Assessment_Protocols.pdf
10	Geotechnical Assessment	https://screening.environment.gov.za/ScreeningDownloads/AssessmentProtocols/Gazetted_General_Requirement_Assessment_Protocols.pdf
11	Socio-Economic Assessment	https://screening.environment.gov.za/ScreeningDownloads/AssessmentProtocols/Gazetted_General_Requirement_Assessment_Protocols.pdf

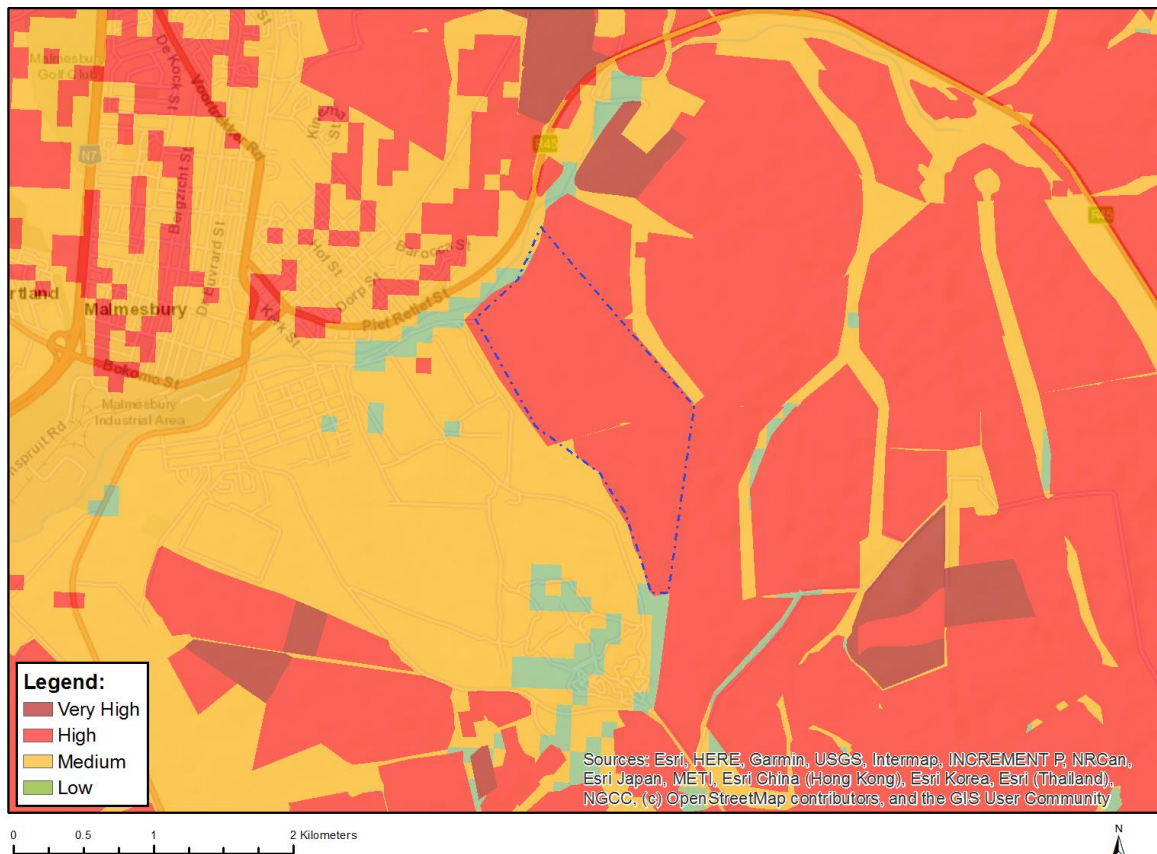
12	Plant Species Assessment	https://screening.environment.gov.za/ScreeningDownloads/AssessmentProtocols/Gazetted_Plant_Species_Assessment_Protocols.pdf
13	Animal Species Assessment	https://screening.environment.gov.za/ScreeningDownloads/AssessmentProtocols/Gazetted_Animal_Species_Assessment_Protocols.pdf

OFFICIAL

Results of the environmental sensitivity of the proposed area.

The following section represents the results of the screening for environmental sensitivity of the proposed site for relevant environmental themes associated with the project classification. It is the duty of the EAP to ensure that the environmental themes provided by the screening tool are comprehensive and complete for the project. Refer to the disclaimer.

MAP OF RELATIVE AGRICULTURE THEME SENSITIVITY

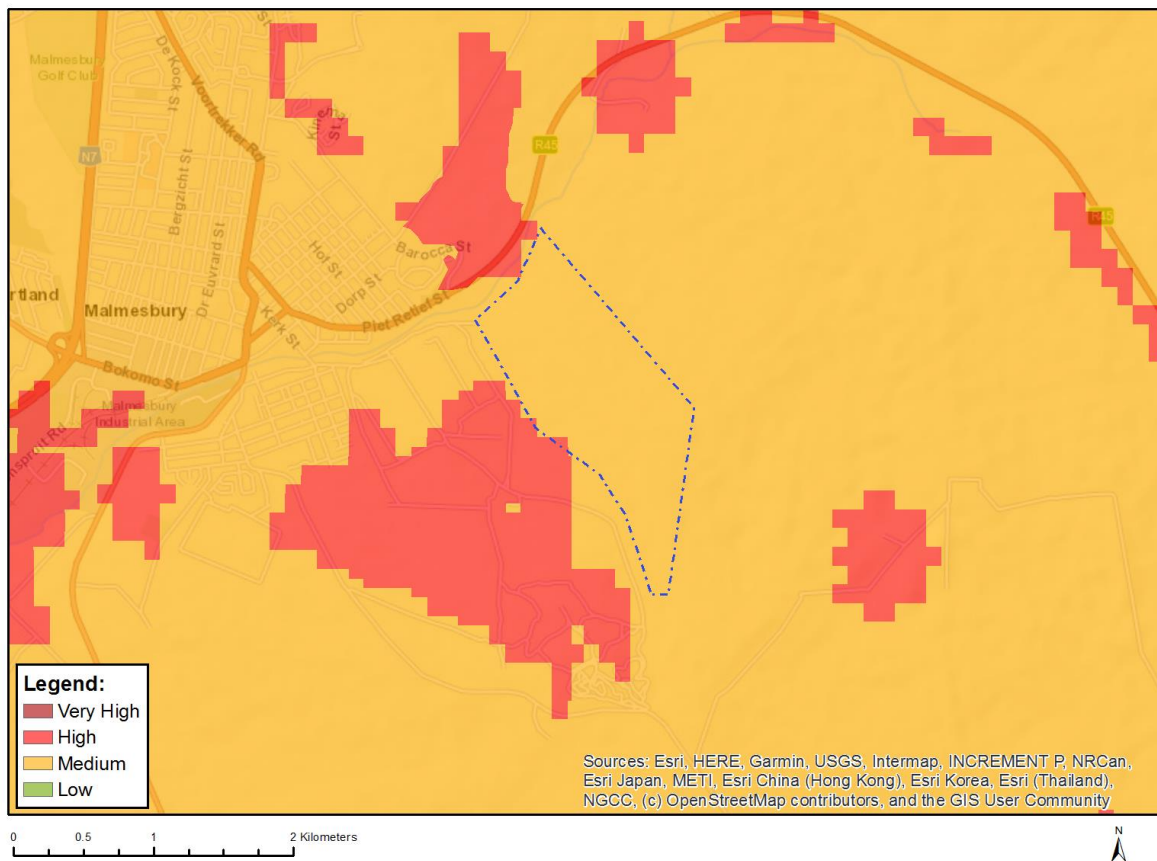


Very High sensitivity	High sensitivity	Medium sensitivity	Low sensitivity
	X		

Sensitivity Features:

Sensitivity	Feature(s)
High	Annual Crop Cultivation / Planted Pastures Rotation; Land capability; 01. Very low/02. Very low/03. Low-Very low/04. Low-Very low/05. Low
High	Annual Crop Cultivation / Planted Pastures Rotation; Land capability; 06. Low-Moderate/07. Low-Moderate/08. Moderate
High	Annual Crop Cultivation / Planted Pastures Rotation; Land capability; 09. Moderate-High/10. Moderate-High
Low	Land capability; 01. Very low/02. Very low/03. Low-Very low/04. Low-Very low/05. Low
Medium	Land capability; 06. Low-Moderate/07. Low-Moderate/08. Moderate

MAP OF RELATIVE ANIMAL SPECIES THEME SENSITIVITY



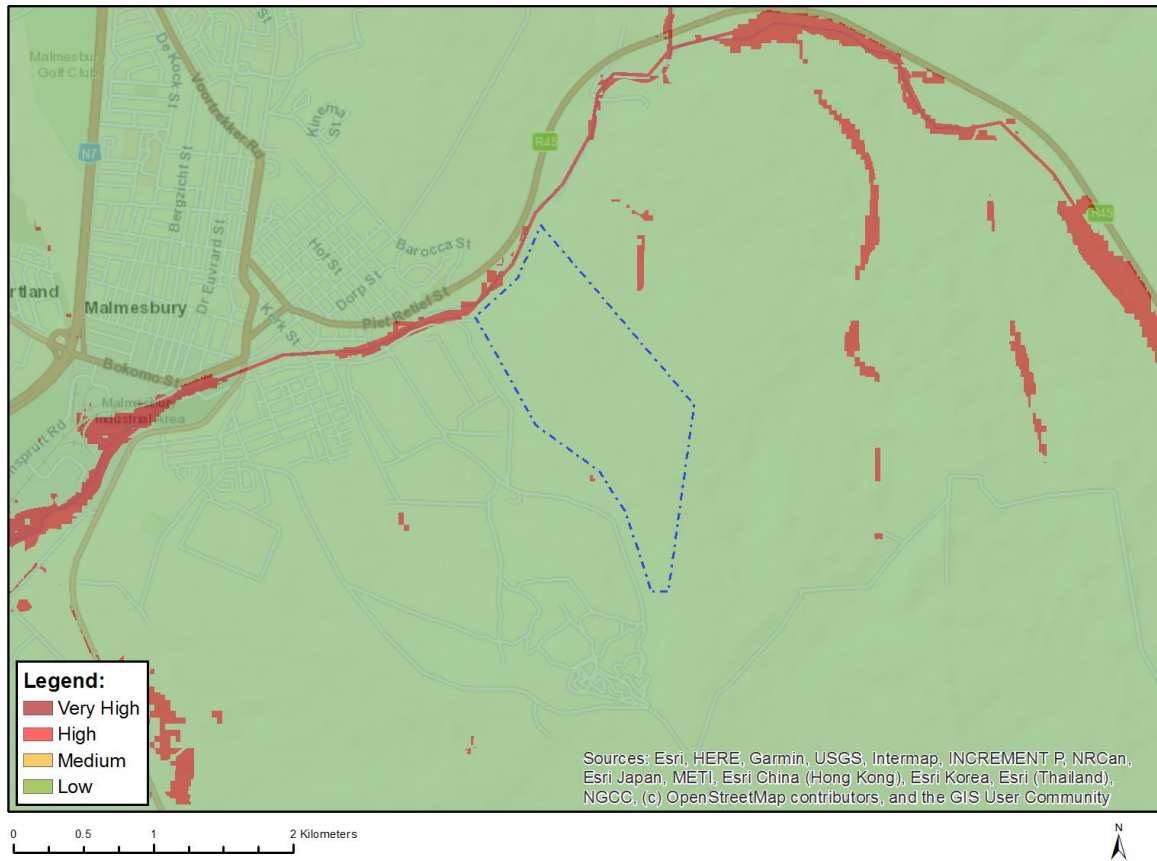
Where only a sensitive plant unique number or sensitive animal unique number is provided in the screening report and an assessment is required, the environmental assessment practitioner (EAP) or specialist is required to email SANBI at eiadatarequests@sanbi.org.za listing all sensitive species with their unique identifiers for which information is required. The name has been withheld as the species may be prone to illegal harvesting and must be protected. SANBI will release the actual species name after the details of the EAP or specialist have been documented.

Very High sensitivity	High sensitivity	Medium sensitivity	Low sensitivity
	X		

Sensitivity Features:

Sensitivity	Feature(s)
High	Aves-Circus maurus
High	Aves-Sagittarius serpentarius
Medium	Aves-Circus maurus
Medium	Aves-Sagittarius serpentarius
Medium	Invertebrate-Pachysoma aesculapius
Medium	Invertebrate-Aneuryphymus montanus

MAP OF RELATIVE AQUATIC BIODIVERSITY THEME SENSITIVITY

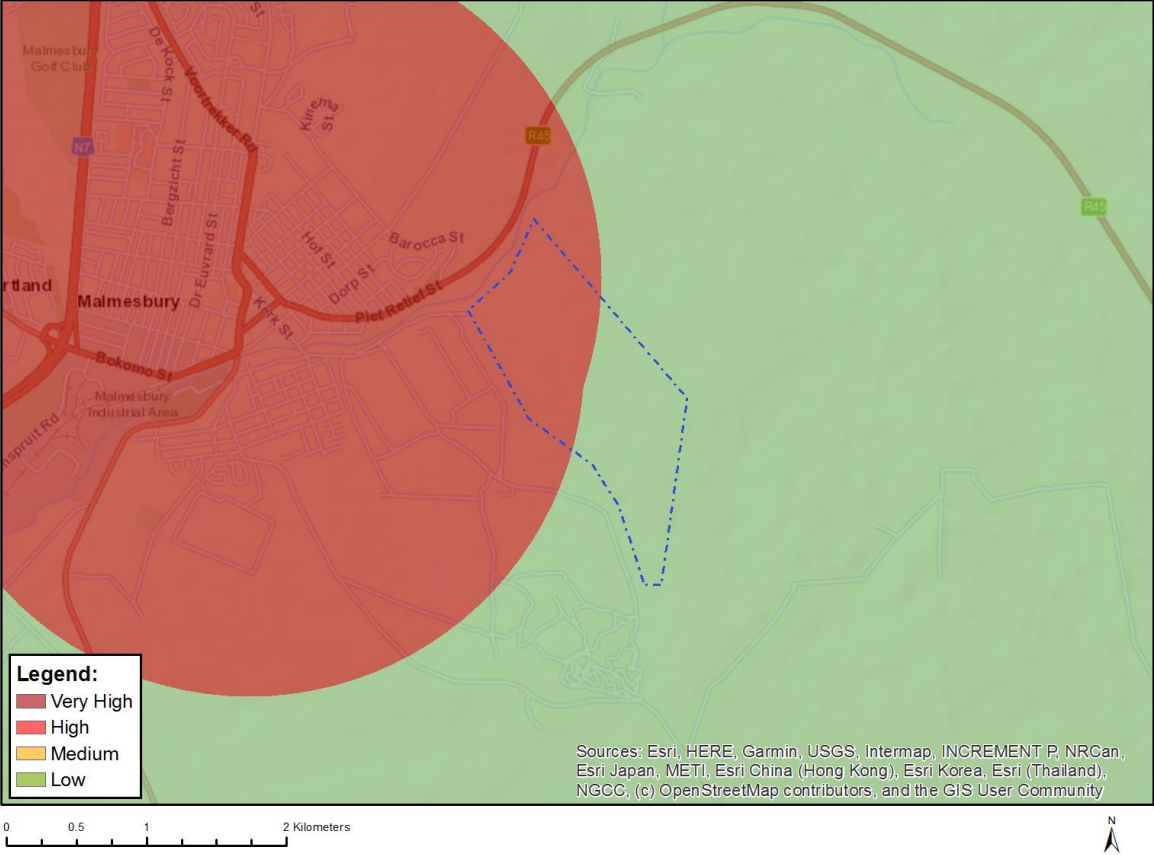


Very High sensitivity	High sensitivity	Medium sensitivity	Low sensitivity
			X

Sensitivity Features:

Sensitivity	Feature(s)
Low	Low sensitivity

MAP OF RELATIVE ARCHAEOLOGICAL AND CULTURAL HERITAGE THEME SENSITIVITY

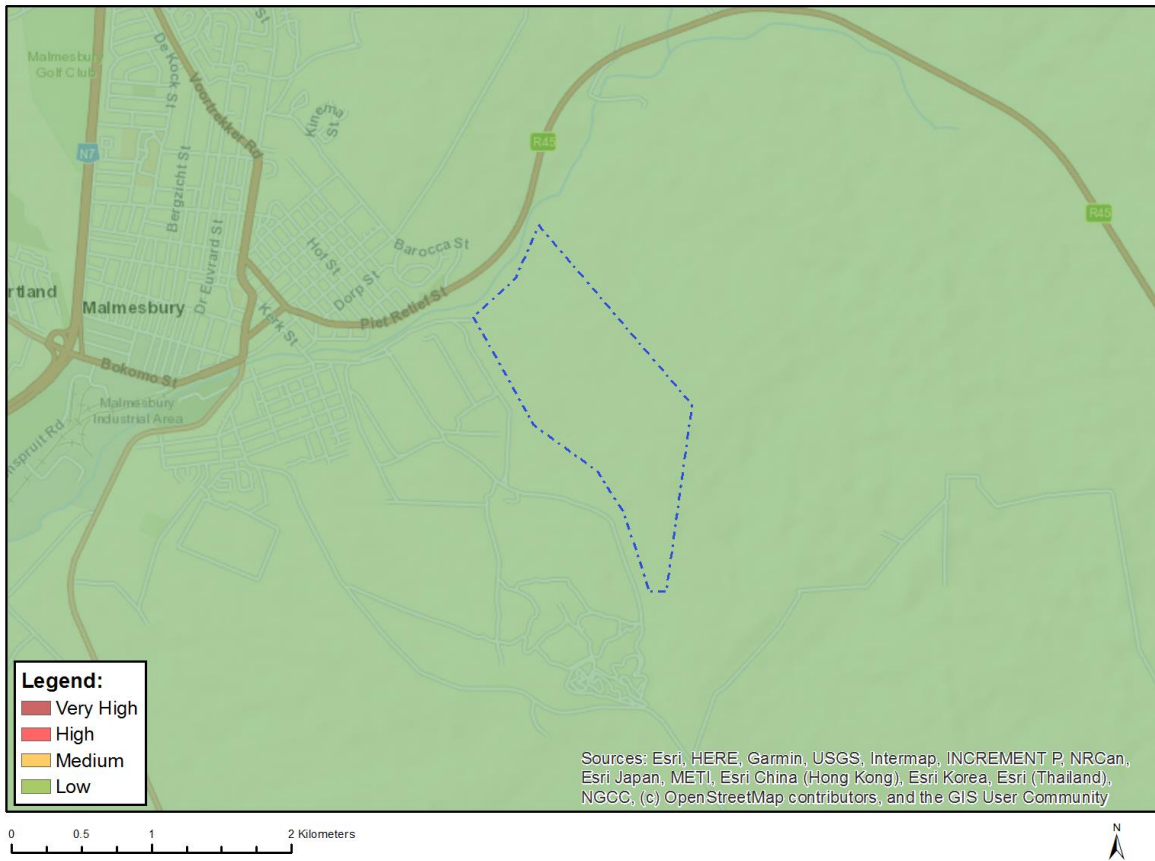


Very High sensitivity	High sensitivity	Medium sensitivity	Low sensitivity
X			

Sensitivity Features:

Sensitivity	Feature(s)
Low	Low sensitivity
Very High	Within 2km of a Grade II Heritage site

MAP OF RELATIVE AVIAN THEME SENSITIVITY

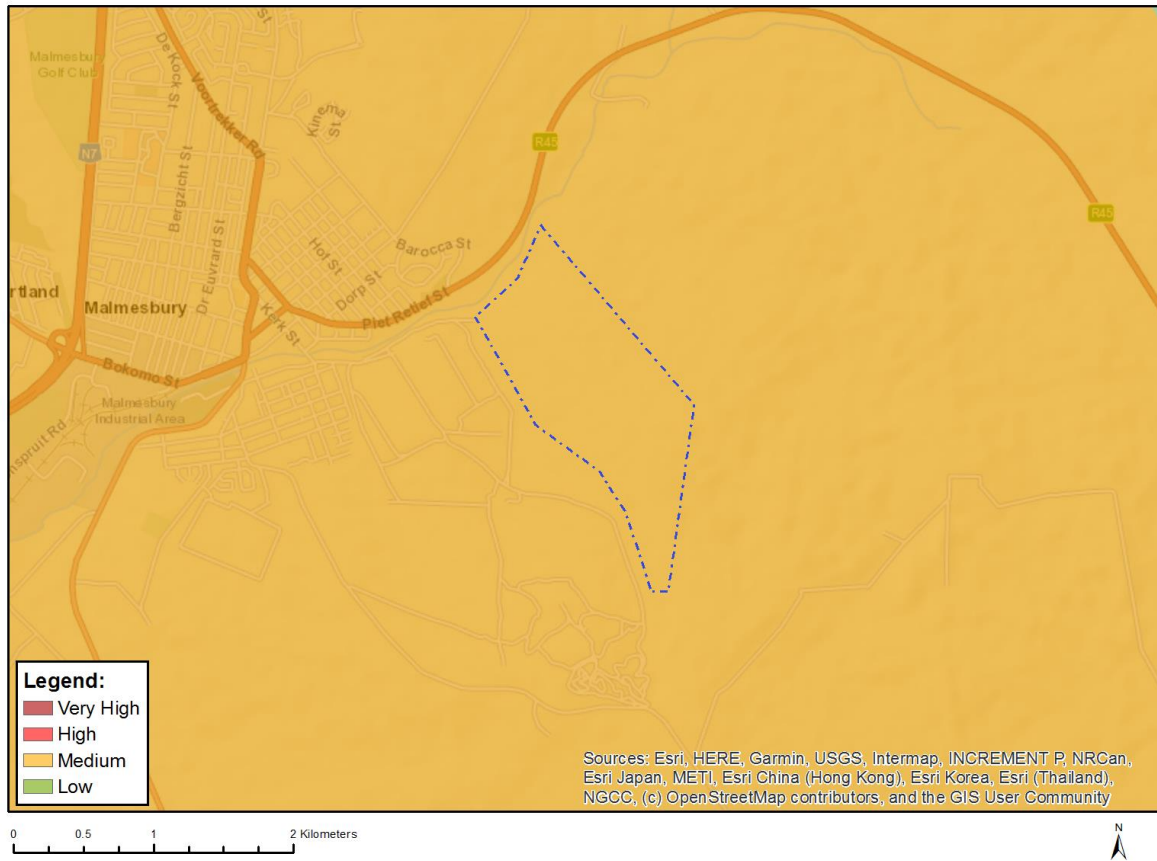


Very High sensitivity	High sensitivity	Medium sensitivity	Low sensitivity
			X

Sensitivity Features:

Sensitivity	Feature(s)
Low	Low Sensitivity

MAP OF RELATIVE CIVIL AVIATION (SOLAR PV) THEME SENSITIVITY

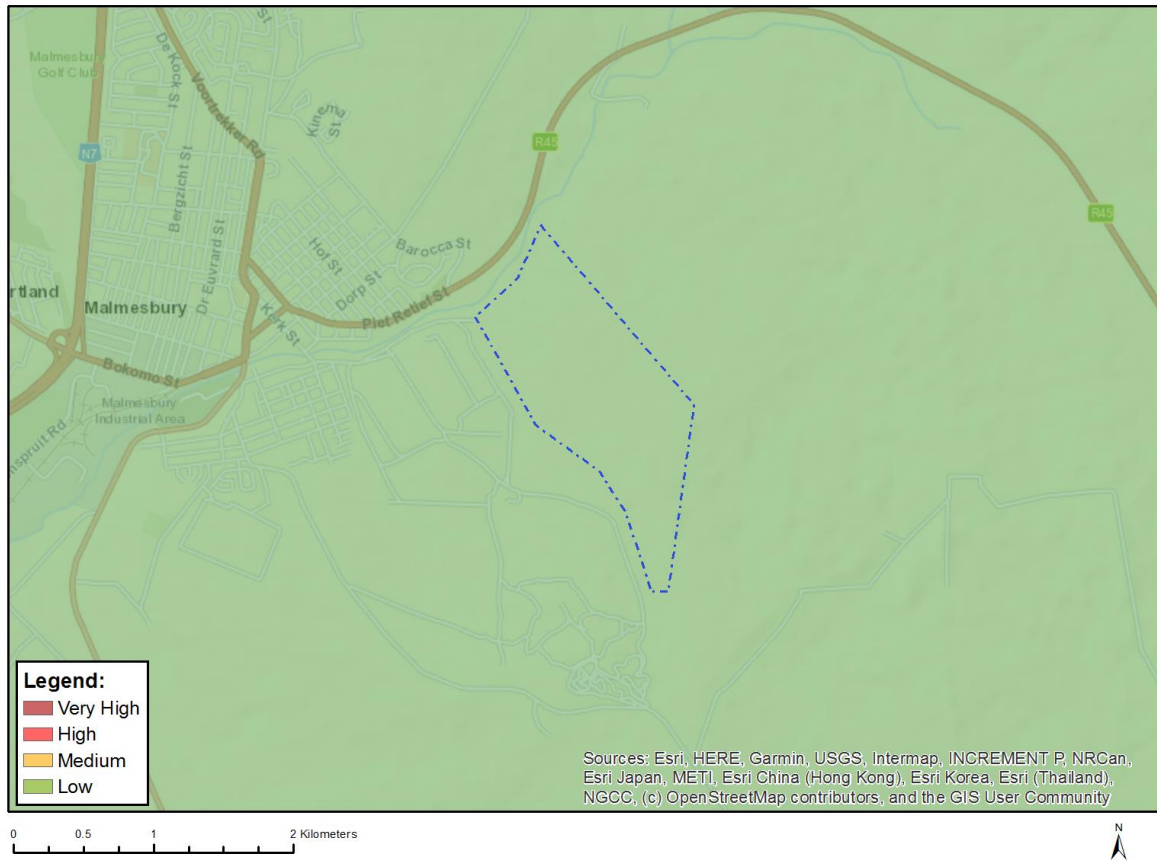


Very High sensitivity	High sensitivity	Medium sensitivity	Low sensitivity
		X	

Sensitivity Features:

Sensitivity	Feature(s)
Medium	Within 8 km of an other civil aviation aerodrome

MAP OF RELATIVE DEFENCE THEME SENSITIVITY

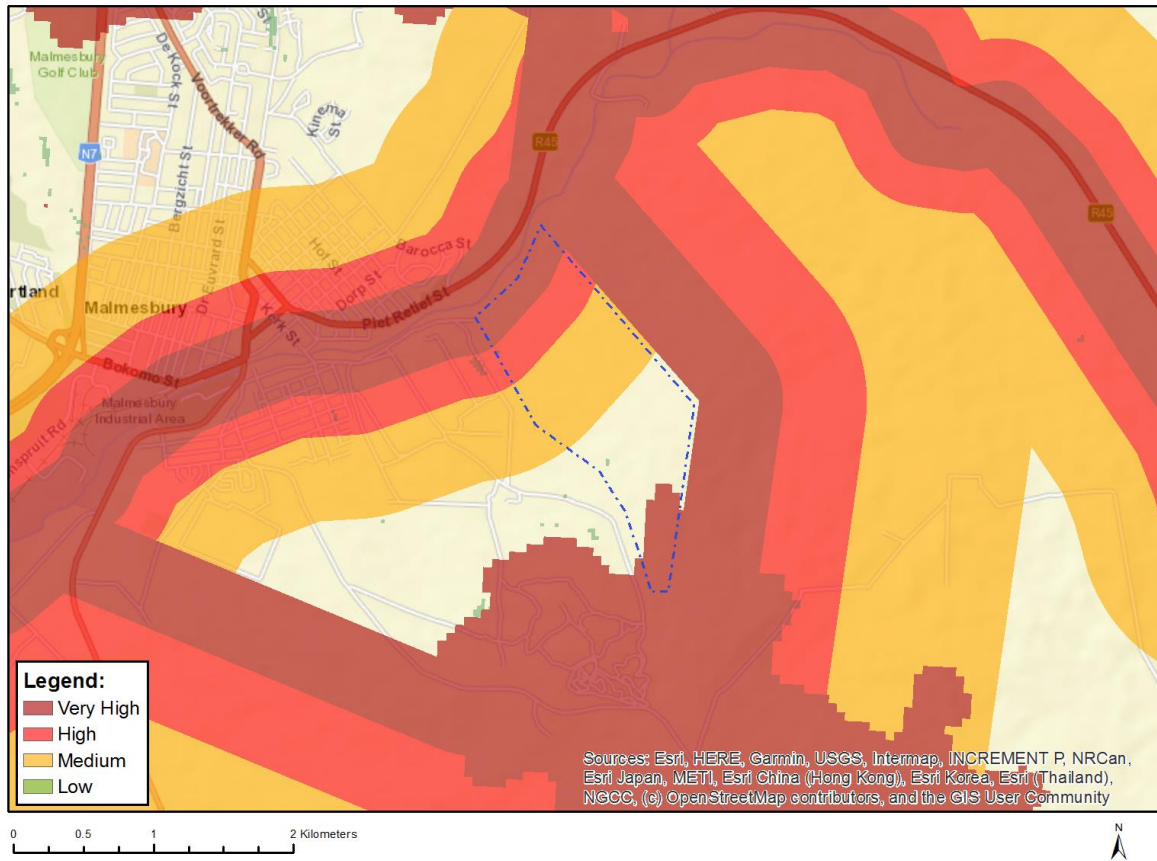


Very High sensitivity	High sensitivity	Medium sensitivity	Low sensitivity
			X

Sensitivity Features:

Sensitivity	Feature(s)
Low	Low sensitivity

MAP OF RELATIVE LANDSCAPE (SOLAR) THEME SENSITIVITY

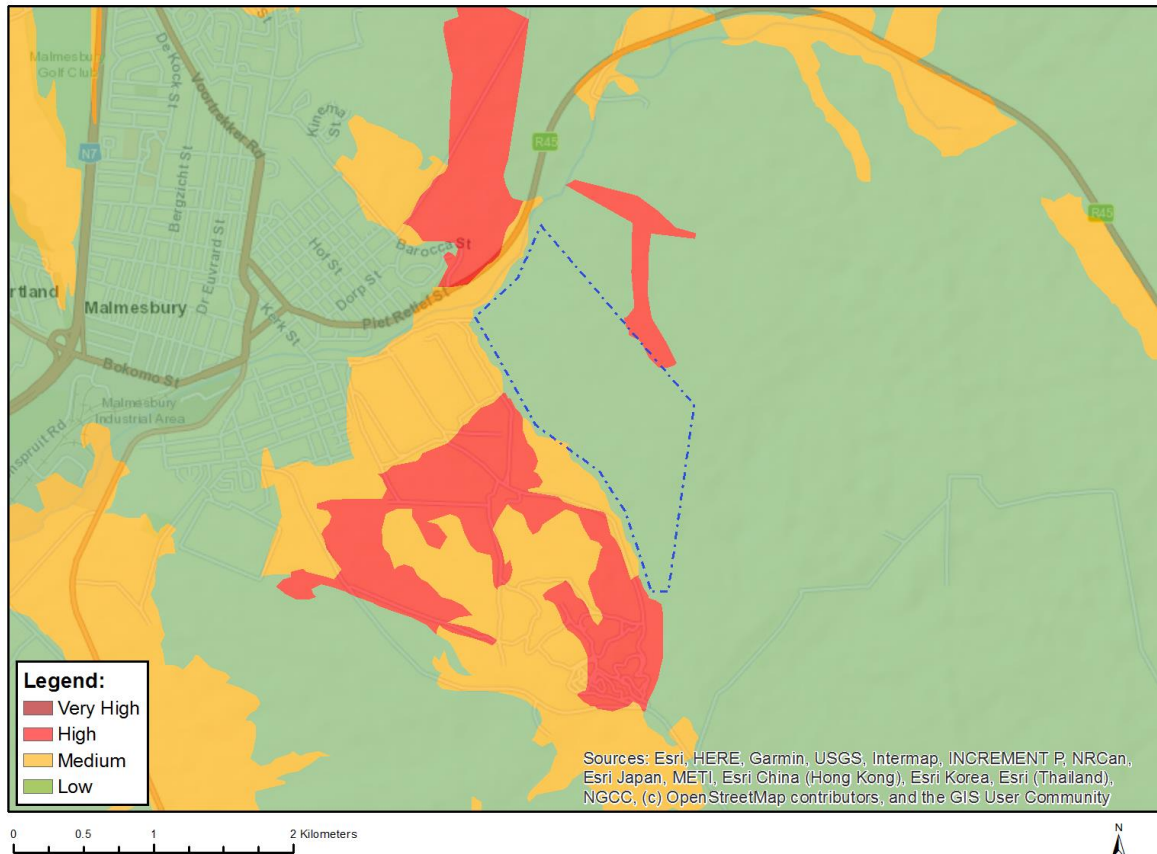


Very High sensitivity	High sensitivity	Medium sensitivity	Low sensitivity
X			

Sensitivity Features:

Sensitivity	Feature(s)
High	Within 500 m of a river
Low	Slope less than 1:10
Medium	Within 1000 m of a wetland
Very High	Mountain tops and high ridges
Very High	Slope more than 1:4
Very High	Within 250 m of a river

MAP OF RELATIVE PLANT SPECIES THEME SENSITIVITY



Where only a sensitive plant unique number or sensitive animal unique number is provided in the screening report and an assessment is required, the environmental assessment practitioner (EAP) or specialist is required to email SANBI at eiadatarequests@sanbi.org.za listing all sensitive species with their unique identifiers for which information is required. The name has been withheld as the species may be prone to illegal harvesting and must be protected. SANBI will release the actual species name after the details of the EAP or specialist have been documented.

Very High sensitivity	High sensitivity	Medium sensitivity	Low sensitivity
	X		

Sensitivity Features:

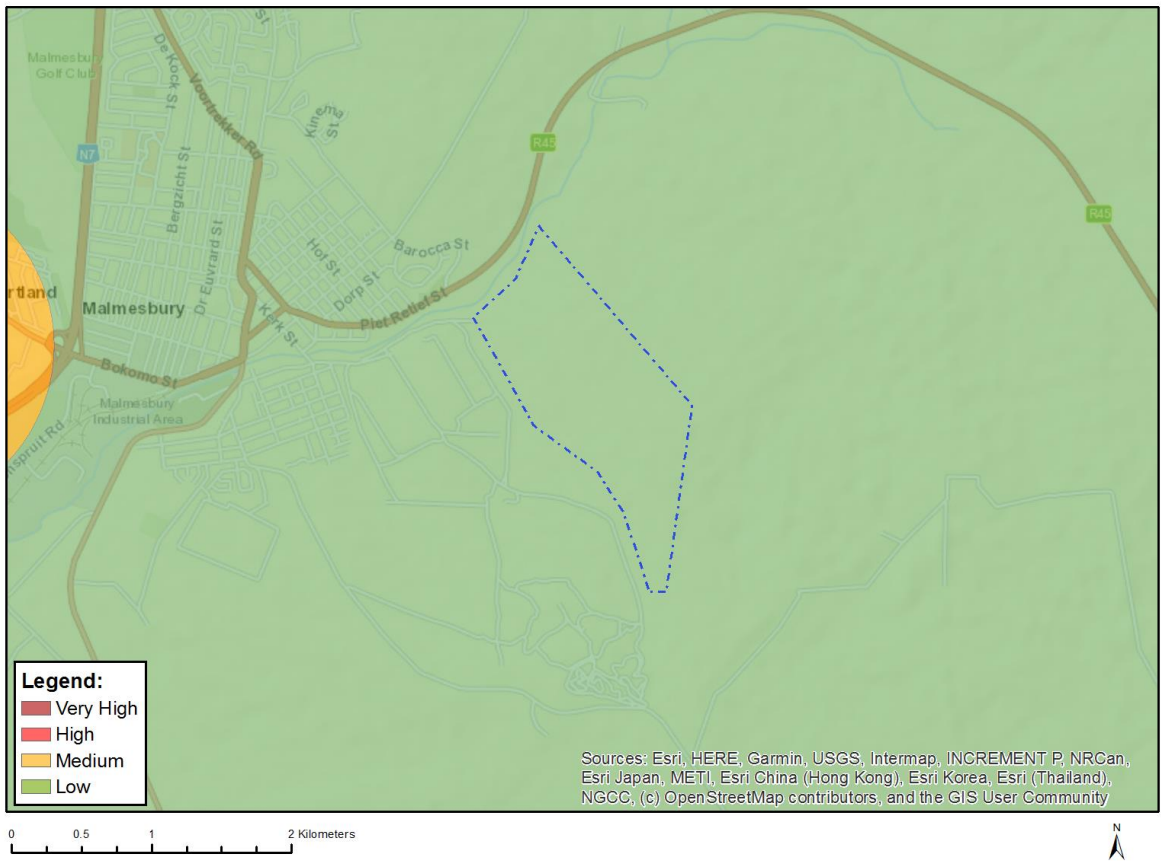
Sensitivity	Feature(s)
High	Sensitive species 1146
Low	Low Sensitivity
Medium	Lampranthus aureus
Medium	Lampranthus dilutus
Medium	Lampranthus filicaulis
Medium	Lampranthus leptaleon
Medium	Lampranthus peacockiae
Medium	Lampranthus scaber
Medium	Lampranthus sociorum
Medium	Lampranthus spiniformis
Medium	Sensitive species 210
Medium	Antimima mucronata
Medium	Antimima aristulata

Medium	<i>Erepsia patula</i>
Medium	<i>Erepsia ramosa</i>
Medium	<i>Ruschia diversifolia</i>
Medium	<i>Ruschia geminiflora</i>
Medium	<i>Ruschia schollii</i>
Medium	<i>Drosanthemum hispifolium</i>
Medium	<i>Cephalophyllum parviflorum</i>
Medium	<i>Xiphotheca lanceolata</i>
Medium	<i>Indigofera psoraloides</i>
Medium	<i>Aspalathus acanthophylla</i>
Medium	<i>Aspalathus aculeata</i>
Medium	<i>Aspalathus araneosa</i>
Medium	<i>Aspalathus glabrata</i>
Medium	<i>Aspalathus horizontalis</i>
Medium	<i>Aspalathus lotoides</i> subsp. <i>lotoides</i>
Medium	<i>Aspalathus muraltioides</i>
Medium	<i>Aspalathus puberula</i>
Medium	<i>Aspalathus rycroftii</i>
Medium	<i>Aspalathus stricticlada</i>
Medium	<i>Aspalathus varians</i>
Medium	<i>Aspalathus wurmbeana</i>
Medium	<i>Rafnia lancea</i>
Medium	<i>Rafnia angulata</i> subsp. <i>ericifolia</i>
Medium	<i>Lebeckia plukenetiana</i>
Medium	<i>Podalyria microphylla</i>
Medium	<i>Podalyria sericea</i>
Medium	<i>Leucadendron corymbosum</i>
Medium	<i>Leucadendron lanigerum</i> var. <i>lanigerum</i>
Medium	<i>Leucadendron thymifolium</i>
Medium	<i>Leucospermum grandiflorum</i>
Medium	<i>Leucospermum hypophyllocarpodendron</i> subsp. <i>canaliculatum</i>
Medium	<i>Leucospermum hypophyllocarpodendron</i> subsp. <i>hypophyllocarpodendron</i>
Medium	<i>Leucospermum parile</i>
Medium	<i>Protea burchellii</i>
Medium	<i>Diastella proteoides</i>
Medium	<i>Serruria brownii</i>
Medium	<i>Serruria incrassata</i>
Medium	<i>Serruria linearis</i>
Medium	<i>Serruria roxburghii</i>
Medium	<i>Merciera tetraloba</i>
Medium	<i>Treichelia dodii</i>
Medium	<i>Pentameris bachmannii</i>
Medium	<i>Anthospermum ericifolium</i>
Medium	<i>Lobostemon capitatus</i>
Medium	<i>Echiostachys incanus</i>
Medium	<i>Echiostachys spicatus</i>
Medium	<i>Aristea lugens</i>
Medium	<i>Hesperantha sufflava</i>
Medium	Sensitive species 14
Medium	Sensitive species 267
Medium	Sensitive species 631
Medium	Sensitive species 331
Medium	Sensitive species 533
Medium	Sensitive species 1134
Medium	<i>Geissorhiza furva</i>
Medium	<i>Geissorhiza malmesburiensis</i>
Medium	<i>Geissorhiza monanthos</i>
Medium	<i>Geissorhiza purpurascens</i>
Medium	<i>Geissorhiza radians</i>
Medium	<i>Geissorhiza setacea</i>

Medium	<i>Geissorhiza erosa</i>
Medium	<i>Ixia abbreviata</i>
Medium	<i>Ixia curta</i>
Medium	<i>Ixia erubescens</i>
Medium	<i>Ixia fuscocitrina</i>
Medium	Sensitive species 560
Medium	<i>Romulea eximia</i>
Medium	Sensitive species 1
Medium	Sensitive species 830
Medium	Sensitive species 1140
Medium	Sensitive species 995
Medium	Sensitive species 1146
Medium	<i>Pauridia alba</i>
Medium	<i>Pauridia pygmaea</i>
Medium	<i>Monopsis variifolia</i>
Medium	<i>Hermannia rugosa</i>
Medium	Sensitive species 222
Medium	Sensitive species 444
Medium	Sensitive species 324
Medium	Sensitive species 18
Medium	Sensitive species 259
Medium	Sensitive species 478
Medium	Sensitive species 756
Medium	<i>Adenogramma rigida</i>
Medium	<i>Wachendorfia brachyandra</i>
Medium	Sensitive species 133
Medium	<i>Trianoptiles solitaria</i>
Medium	<i>Hypodiscus rugosus</i>
Medium	<i>Restio duthieae</i>
Medium	<i>Anisodonteia biflora</i>
Medium	Sensitive species 985
Medium	Sensitive species 120
Medium	Sensitive species 266
Medium	<i>Pterygodium inversum</i>
Medium	<i>Gnidia spicata</i>
Medium	<i>Metalasia capitata</i>
Medium	<i>Metalasia octoflora</i>
Medium	<i>Senecio cadiscus</i>
Medium	<i>Athanasia rugulosa</i>
Medium	Sensitive species 1042
Medium	<i>Agathosma glandulosa</i>
Medium	<i>Agathosma latipetala</i>
Medium	<i>Macrostylis villosa</i> subsp. <i>villosa</i>
Medium	<i>Cliffortia acockii</i>
Medium	<i>Muraltia decipiens</i>
Medium	<i>Muraltia macropetala</i>
Medium	Sensitive species 1135
Medium	Sensitive species 382
Medium	Sensitive species 158
Medium	Sensitive species 723
Medium	Sensitive species 616
Medium	<i>Wurmbea inusta</i>
Medium	<i>Phylica stenopetala</i> var. <i>stenopetala</i>
Medium	<i>Phylica strigulosa</i>
Medium	<i>Phylica thunbergiana</i>
Medium	<i>Ezoloba macrocarpa</i>
Medium	<i>Codonorhiza azurea</i>
Medium	<i>Lampranthus debilis</i>
Medium	<i>Lampranthus glaucus</i>
Medium	<i>Drosanthemum striatum</i>

Medium	Xiphotheca reflexa
Medium	Psoralea alata
Medium	Aponogeton fugax
Medium	Sensitive species 593
Medium	Sensitive species 335
Medium	Sensitive species 599
Medium	Restio paludosus
Medium	Restio rigoratus
Medium	Cotula pusilla
Medium	Sensitive species 1225

MAP OF RELATIVE RFI THEME SENSITIVITY

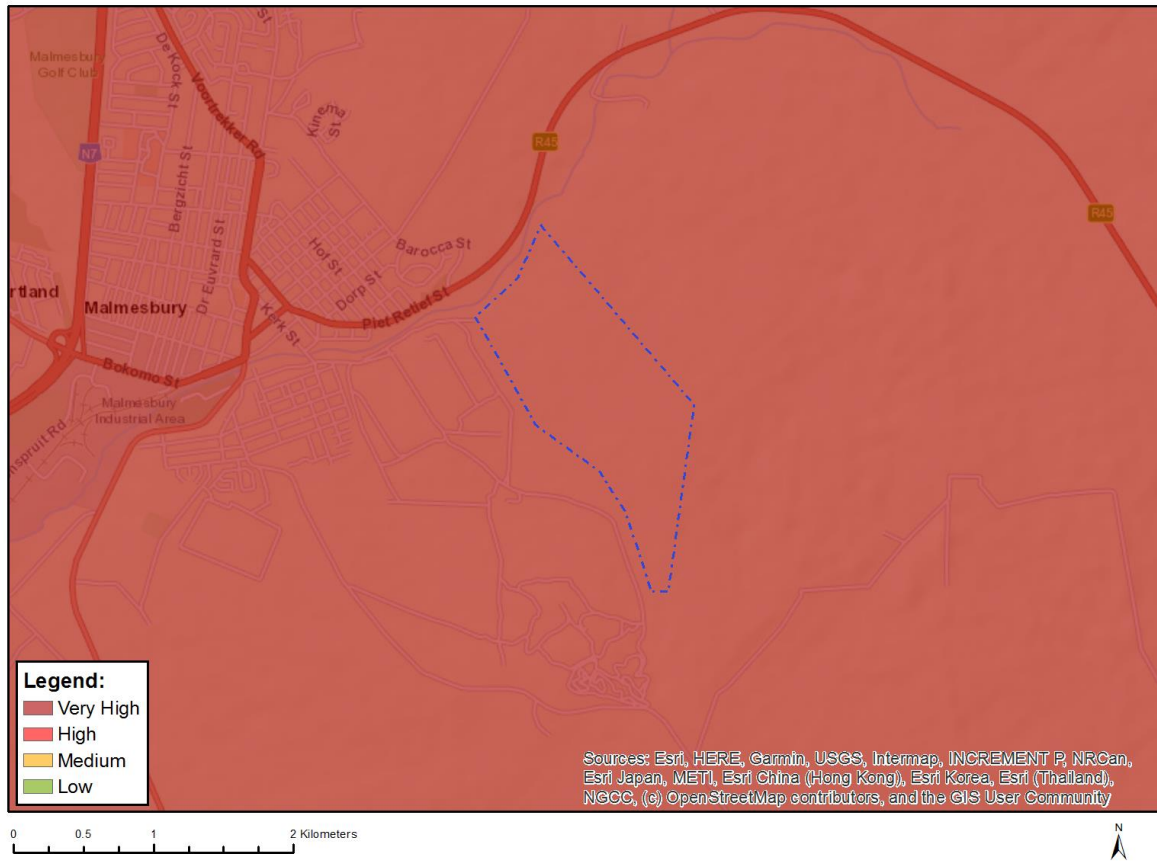


Very High sensitivity	High sensitivity	Medium sensitivity	Low sensitivity
			X

Sensitivity Features:

Sensitivity	Feature(s)
Low	Low sensitivity

MAP OF RELATIVE TERRESTRIAL BIODIVERSITY THEME SENSITIVITY



Very High sensitivity	High sensitivity	Medium sensitivity	Low sensitivity
X			

Sensitivity Features:

Sensitivity	Feature(s)
Very High	ESA 2: Restore from other land use
Very High	CBA 1: Terrestrial
Very High	EN_Swartland Granite Renosterveld