

**SCREENING REPORT FOR AN ENVIRONMENTAL AUTHORIZATION AS
REQUIRED BY THE 2014 EIA REGULATIONS – PROPOSED SITE
ENVIRONMENTAL SENSITIVITY**

EIA Reference number: .

Project name: Vermaaklikheid S24G Application

Project title: Portion 9 of Farm Vermaaklikheid No. 499

Date screening report generated: 11/03/2024 10:35:11

Applicant: Mr. J. Gersh

Compiler: Clinton Geyser - EnviroAfrica

Compiler signature:
.....

Application Category: Infrastructure | Localised infrastructure | Infrastructure in the
Sea_Estuary_Littoral Active Zone_Development Setback_100M Inland or coastal public property

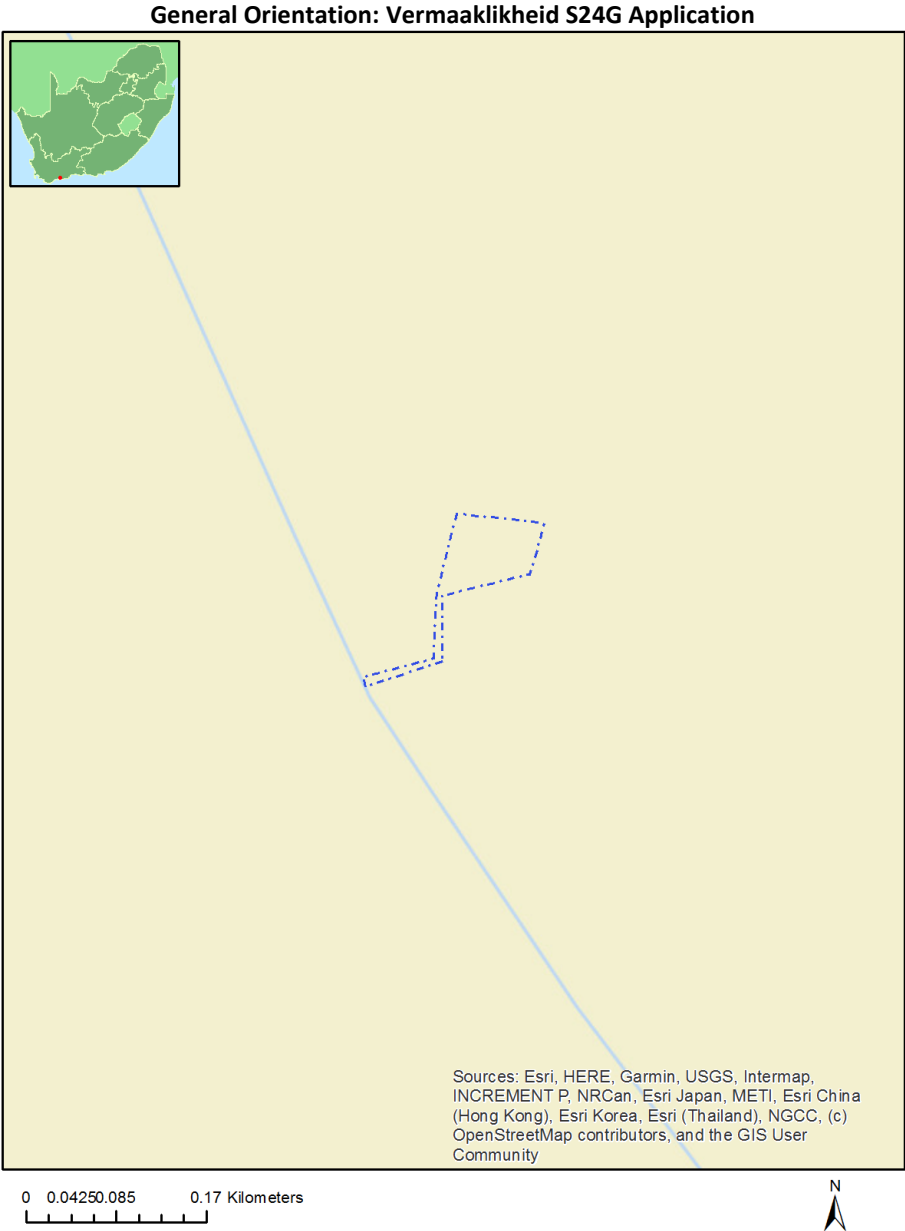


Table of Contents

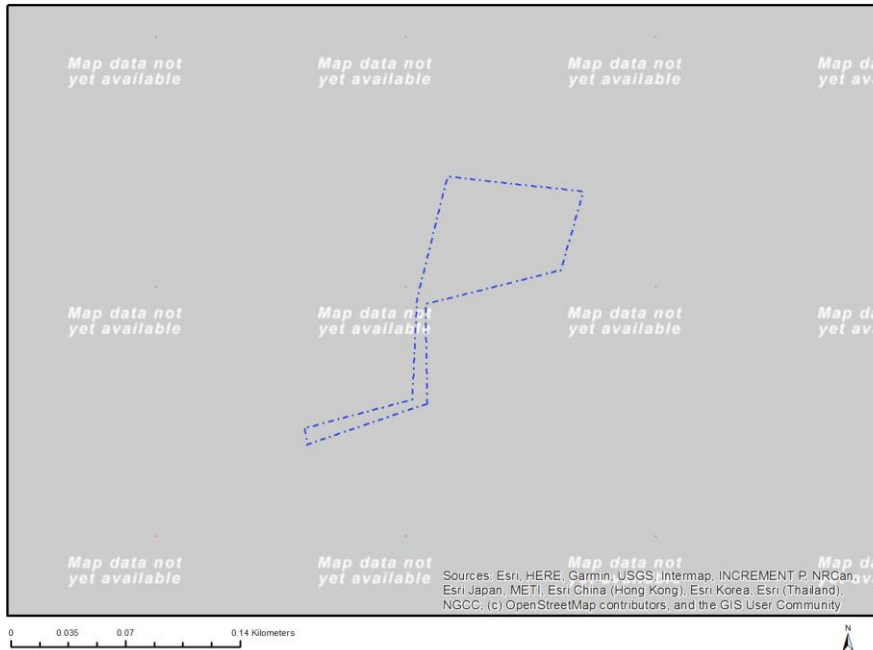
- Proposed Project Location 3
 - Orientation map 1: General location 3
- Map of proposed site and relevant area(s) 4
 - Cadastral details of the proposed site 4
 - Wind and Solar developments with an approved Environmental Authorisation or applications under consideration within 30 km of the proposed area 4
 - Environmental Management Frameworks relevant to the application 5
- Environmental screening results and assessment outcomes 5
 - Relevant development incentives, restrictions, exclusions or prohibitions 5
 - Proposed Development Area Environmental Sensitivity 5
 - Specialist assessments identified 5
- Results of the environmental sensitivity of the proposed area 7
 - MAP OF RELATIVE AGRICULTURE THEME SENSITIVITY 7
 - MAP OF RELATIVE ANIMAL SPECIES THEME SENSITIVITY 8
 - MAP OF RELATIVE AQUATIC BIODIVERSITY THEME SENSITIVITY 9
 - MAP OF RELATIVE ARCHAEOLOGICAL AND CULTURAL HERITAGE THEME SENSITIVITY 10
 - MAP OF RELATIVE CIVIL AVIATION THEME SENSITIVITY 11
 - MAP OF RELATIVE DEFENCE THEME SENSITIVITY 12
 - MAP OF RELATIVE PALEONTOLOGY THEME SENSITIVITY 13
 - MAP OF RELATIVE PLANT SPECIES THEME SENSITIVITY 14
 - MAP OF RELATIVE TERRESTRIAL BIODIVERSITY THEME SENSITIVITY 16

Proposed Project Location

Orientation map 1: General location



Map of proposed site and relevant area(s)



Cadastral details of the proposed site

Property details:

No	Farm Name	Farm/ Erf No	Portion	Latitude	Longitude	Property Type
1	VERMAAKLYKHEID	499	0	34°19'20.99S	21°3'23.33E	Farm
2	KLEINFONTEIN	503	0	34°20'37.17S	21°0'34.03E	Farm
3	KLEINFONTEIN	503	3	34°19'52.32S	21°1'28.15E	Farm Portion
4	VERMAAKLYKHEID	499	9	34°19'20.68S	21°1'51.88E	Farm Portion

Development footprint¹ vertices:

No development footprint(s) specified.

Wind and Solar developments with an approved Environmental Authorisation or applications under consideration within 30 km of the proposed area

No	EIA Reference No	Classification	Status of application	Distance from proposed area (km)
1	12/12/20/1815/3	Wind	Approved	22.9

¹ “development footprint”, means the area within the site on which the development will take place and includes all ancillary developments for example roads, power lines, boundary walls, paving etc. which require vegetation clearance or which will be disturbed and for which the application has been submitted.

Environmental Management Frameworks relevant to the application

No intersections with EMF areas found.

Environmental screening results and assessment outcomes

The following sections contain a summary of any development incentives, restrictions, exclusions or prohibitions that apply to the proposed development site as well as the most environmental sensitive features on the site based on the site sensitivity screening results for the application classification that was selected. The application classification selected for this report is:

Infrastructure | Localised infrastructure | Infrastructure in the Sea_Estuary_Littoral Active Zone_Development Setback_100M Inland or coastal public property.

Relevant development incentives, restrictions, exclusions or prohibitions

The following development incentives, restrictions, exclusions or prohibitions and their implications that apply to this site are indicated below.

Incentive, restriction or prohibition	Implication
South African Conservation Areas	https://screening.environment.gov.za/ScreeningDownloads/DevelopmentZones/SACAD_OR_2023_Q3_Metadata.pdf

Proposed Development Area Environmental Sensitivity

The following summary of the development site environmental sensitivities is identified. Only the highest environmental sensitivity is indicated. The footprint environmental sensitivities for the proposed development footprint as identified, are indicative only and must be verified on site by a suitably qualified person before the specialist assessments identified below can be confirmed.

Theme	Very High sensitivity	High sensitivity	Medium sensitivity	Low sensitivity
Agriculture Theme			X	
Animal Species Theme		X		
Aquatic Biodiversity Theme	X			
Archaeological and Cultural Heritage Theme	X			
Civil Aviation Theme		X		
Defence Theme				X
Paleontology Theme			X	
Plant Species Theme			X	
Terrestrial Biodiversity Theme	X			

Specialist assessments identified

Based on the selected classification, and the known impacts associated with the proposed development, the following list of specialist assessments have been identified for inclusion in the assessment report. It is the responsibility of the EAP to confirm this list and to motivate in the

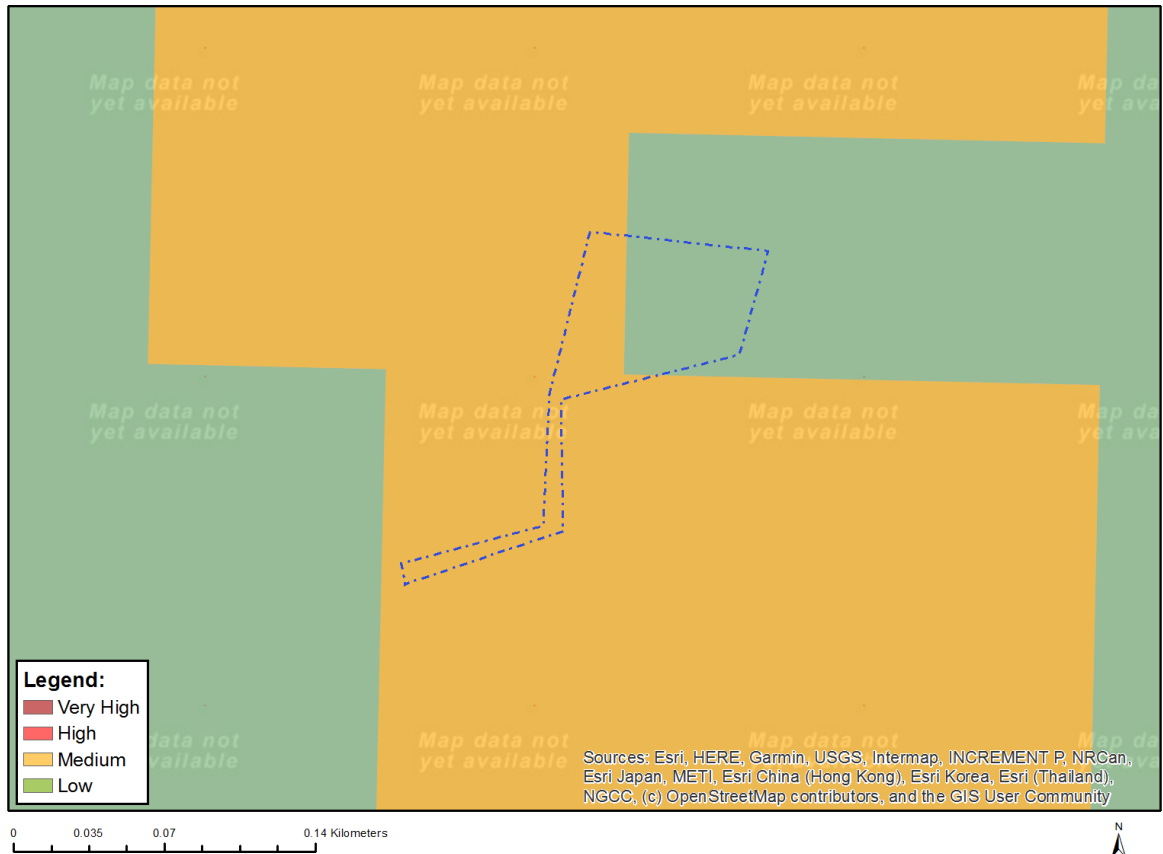
assessment report, the reason for not including any of the identified specialist study including the provision of photographic evidence of the site situation.

No	Specialist assessment	Assessment Protocol
1	Landscape/Visual Impact Assessment	https://screening.environment.gov.za/ScreeningDownloads/AssessmentProtocols/Gazetted_General_Requirement_Assessment_Protocols.pdf
2	Archaeological and Cultural Heritage Impact Assessment	https://screening.environment.gov.za/ScreeningDownloads/AssessmentProtocols/Gazetted_General_Requirement_Assessment_Protocols.pdf
3	Palaeontology Impact Assessment	https://screening.environment.gov.za/ScreeningDownloads/AssessmentProtocols/Gazetted_General_Requirement_Assessment_Protocols.pdf
4	Terrestrial Biodiversity Impact Assessment	https://screening.environment.gov.za/ScreeningDownloads/AssessmentProtocols/Gazetted_Terrestrial_Biodiversity_Assessment_Protocols.pdf
5	Aquatic Biodiversity Impact Assessment	https://screening.environment.gov.za/ScreeningDownloads/AssessmentProtocols/Gazetted_Aquatic_Biodiversity_Assessment_Protocols.pdf
6	Marine Impact Assessment	https://screening.environment.gov.za/ScreeningDownloads/AssessmentProtocols/Gazetted_General_Requirement_Assessment_Protocols.pdf
7	Avian Impact Assessment	https://screening.environment.gov.za/ScreeningDownloads/AssessmentProtocols/Gazetted_Avifauna_Assessment_Protocols.pdf
8	Geotechnical Assessment	https://screening.environment.gov.za/ScreeningDownloads/AssessmentProtocols/Gazetted_General_Requirement_Assessment_Protocols.pdf
9	Socio-Economic Assessment	https://screening.environment.gov.za/ScreeningDownloads/AssessmentProtocols/Gazetted_General_Requirement_Assessment_Protocols.pdf
10	Plant Species Assessment	https://screening.environment.gov.za/ScreeningDownloads/AssessmentProtocols/Gazetted_Plant_Species_Assessment_Protocols.pdf
11	Animal Species Assessment	https://screening.environment.gov.za/ScreeningDownloads/AssessmentProtocols/Gazetted_Animal_Species_Assessment_Protocols.pdf

Results of the environmental sensitivity of the proposed area.

The following section represents the results of the screening for environmental sensitivity of the proposed site for relevant environmental themes associated with the project classification. It is the duty of the EAP to ensure that the environmental themes provided by the screening tool are comprehensive and complete for the project. Refer to the disclaimer.

MAP OF RELATIVE AGRICULTURE THEME SENSITIVITY

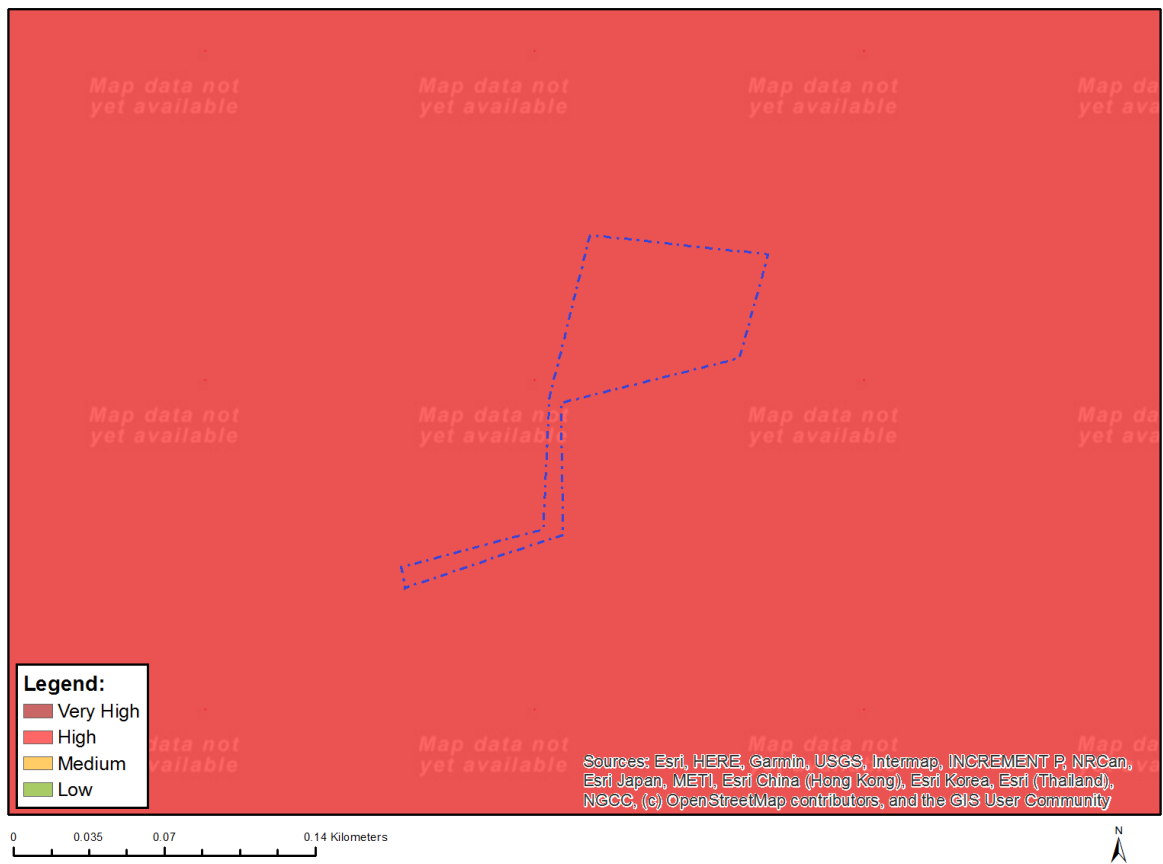


Very High sensitivity	High sensitivity	Medium sensitivity	Low sensitivity
		X	

Sensitivity Features:

Sensitivity	Feature(s)
Low	Land capability;01. Very low/02. Very low/03. Low-Very low/04. Low-Very low/05. Low
Medium	Land capability;06. Low-Moderate/07. Low-Moderate/08. Moderate

MAP OF RELATIVE CIVIL AVIATION THEME SENSITIVITY



Very High sensitivity	High sensitivity	Medium sensitivity	Low sensitivity
	X		

Sensitivity Features:

Sensitivity	Feature(s)
High	Dangerous and restricted airspace as demarcated

MAP OF RELATIVE DEFENCE THEME SENSITIVITY



Very High sensitivity	High sensitivity	Medium sensitivity	Low sensitivity
			X

Sensitivity Features:

Sensitivity	Feature(s)
Low	Low Sensitivity

MAP OF RELATIVE PALEONTOLOGY THEME SENSITIVITY

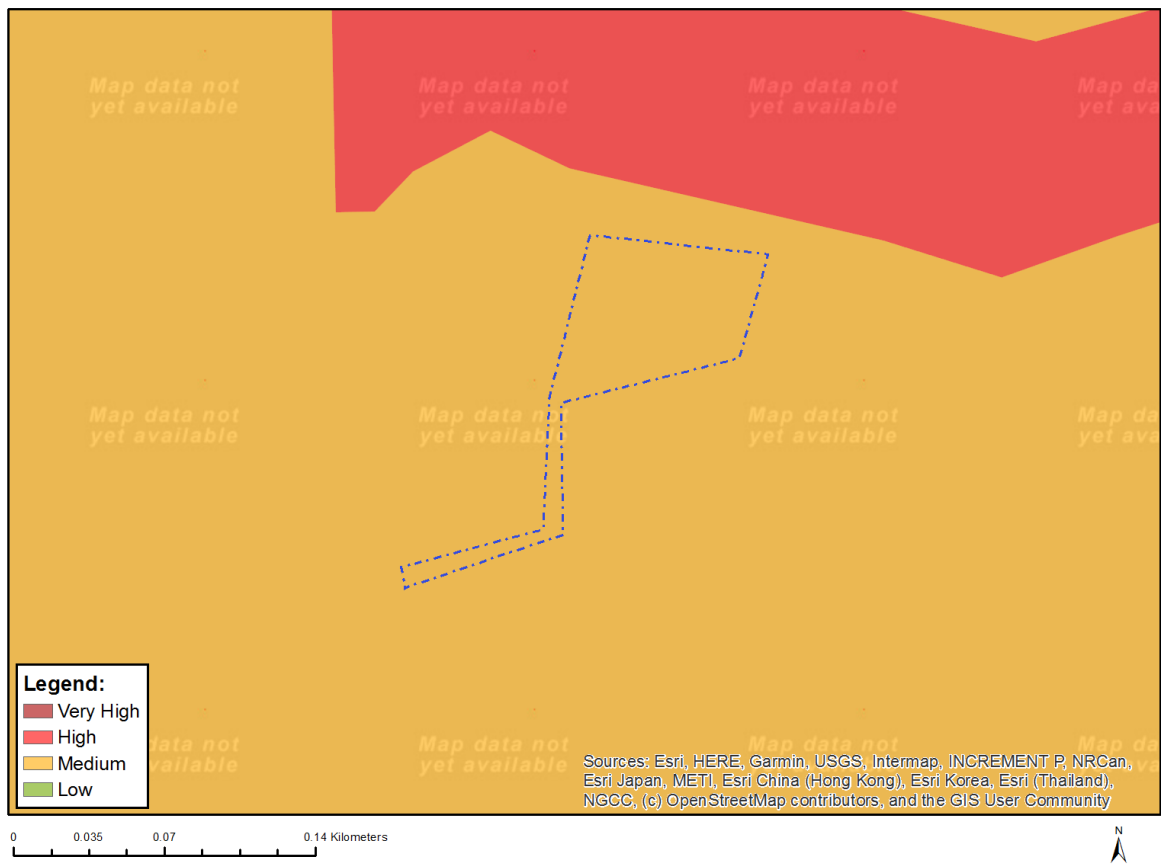


Very High sensitivity	High sensitivity	Medium sensitivity	Low sensitivity
		X	

Sensitivity Features:

Sensitivity	Feature(s)
Medium	Features with a Medium paleontological sensitivity

MAP OF RELATIVE PLANT SPECIES THEME SENSITIVITY



Where only a sensitive plant unique number or sensitive animal unique number is provided in the screening report and an assessment is required, the environmental assessment practitioner (EAP) or specialist is required to email SANBI at eiadatarequests@sanbi.org.za listing all sensitive species with their unique identifiers for which information is required. The name has been withheld as the species may be prone to illegal harvesting and must be protected. SANBI will release the actual species name after the details of the EAP or specialist have been documented.

Very High sensitivity	High sensitivity	Medium sensitivity	Low sensitivity
		X	

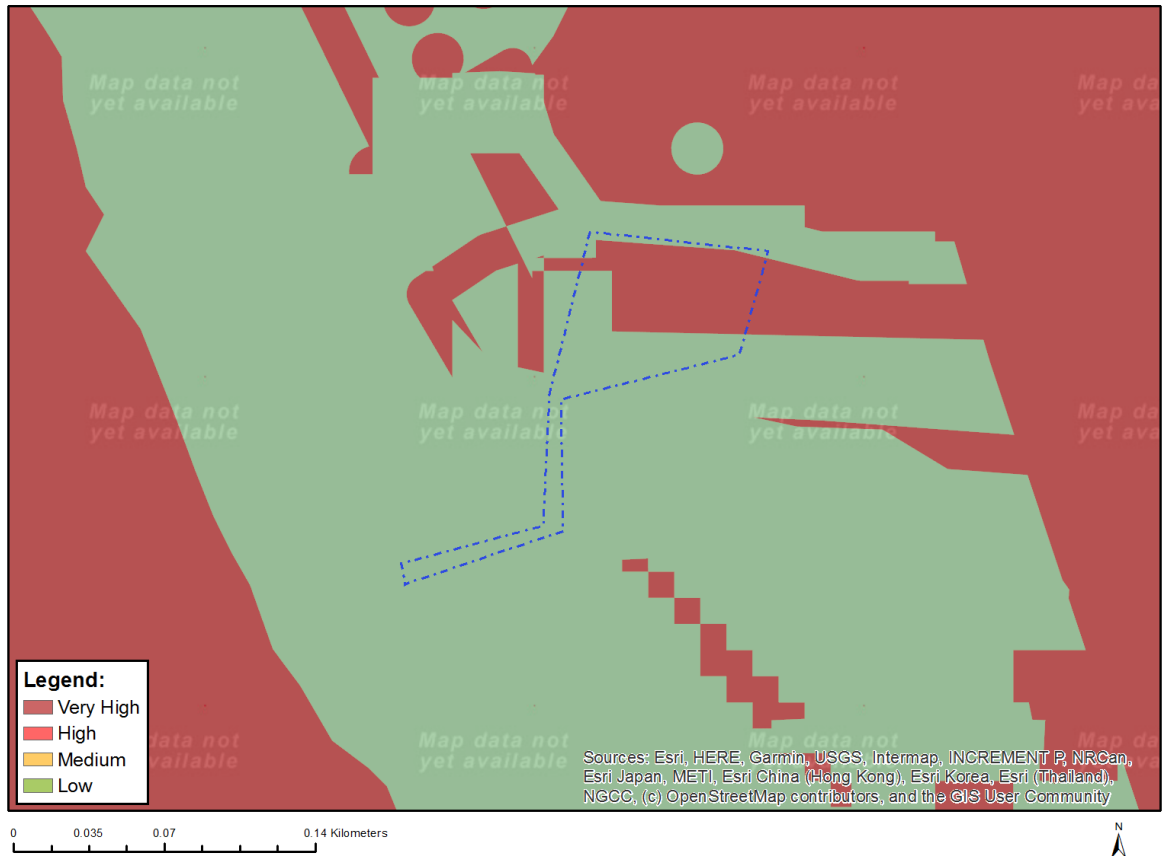
Sensitivity Features:

Sensitivity	Feature(s)
Medium	Lampranthus ceriseus
Medium	Lampranthus fergusoniae
Medium	Lampranthus foliosus
Medium	Lampranthus pauciflorus
Medium	Ruschia leptocalyx
Medium	Argyrobium harmsianum
Medium	Indigofera mundiana
Medium	Aspalathus calcarea
Medium	Aspalathus prostrata
Medium	Aspalathus steudeliana
Medium	Aspalathus zeyheri
Medium	Otholobium sp. nov. (Esterhuysen 33240a BOL)
Medium	Lebeckia gracilis

Medium	<i>Lotononis viborgioides</i>
Medium	<i>Leucadendron coriaceum</i>
Medium	<i>Leucadendron galpinii</i>
Medium	<i>Leucadendron linifolium</i>
Medium	<i>Leucospermum praecox</i>
Medium	<i>Wahlenbergia levynsiae</i>
Medium	<i>Wahlenbergia polyantha</i>
Medium	<i>Selago diffusa</i>
Medium	<i>Selago glandulosa</i>
Medium	<i>Selago ramosissima</i>
Medium	<i>Pentameris calcicola</i> var. <i>hirsuta</i>
Medium	<i>Tribolium ciliare</i>
Medium	<i>Hesperantha muirii</i>
Medium	Sensitive species 802
Medium	Sensitive species 340
Medium	<i>Lobelia valida</i>
Medium	<i>Erica viscosissima</i>
Medium	<i>Erica calcicola</i>
Medium	<i>Hermannia lavandulifolia</i>
Medium	Sensitive species 1142
Medium	<i>Thamnochortus muirii</i>
Medium	<i>Thamnochortus pluristachyus</i>
Medium	<i>Duvalia elegans</i>
Medium	<i>Duvalia immaculata</i>
Medium	<i>Cynanchum zeyheri</i>
Medium	Sensitive species 1117
Medium	<i>Heliophila linearis</i> var. <i>reticulata</i>
Medium	<i>Gnidia ericoides</i>
Medium	<i>Metalasia luteola</i>
Medium	<i>Felicia ebracteata</i>
Medium	<i>Senecio lycopodioides</i>
Medium	<i>Cotula myriophylloides</i>
Medium	<i>Oedera steyniae</i>
Medium	<i>Osteospermum subulatum</i>
Medium	<i>Chrysocoma strigosa</i>
Medium	<i>Stoebe muirii</i>
Medium	<i>Stoebe rugulosa</i>
Medium	<i>Relhania garnotii</i>
Medium	<i>Diosma tenella</i>
Medium	<i>Agathosma eriantha</i>
Medium	<i>Agathosma minuta</i>
Medium	<i>Agathosma muirii</i>
Medium	<i>Agathosma riversdalensis</i>
Medium	<i>Euchaetis albertiniana</i>
Medium	<i>Cliffortia longifolia</i>
Medium	<i>Polygala pubiflora</i>
Medium	Sensitive species 692
Medium	Sensitive species 980
Medium	Sensitive species 5
Medium	Sensitive species 913
Medium	<i>Phylica elimensis</i>
Medium	<i>Phylica incurvata</i>
Medium	<i>Drosanthemum lavisii</i>
Medium	<i>Aspalathus tylodes</i>
Medium	Sensitive species 800
Medium	Sensitive species 335
Medium	Sensitive species 142
Medium	<i>Elegia squamosa</i>
Medium	Sensitive species 500
Medium	Sensitive species 654

Medium	Diosma passerinoides
Medium	Agathosma microcarpa
Medium	Zosteria capensis

MAP OF RELATIVE TERRESTRIAL BIODIVERSITY THEME SENSITIVITY



Very High sensitivity	High sensitivity	Medium sensitivity	Low sensitivity
X			

Sensitivity Features:

Sensitivity	Feature(s)
Low	Low Sensitivity
Very High	CBA 2: Terrestrial
Very High	CBA 1: Terrestrial