

BITOU NEWS

Your Free Community Paper

www.bitounews.co.za

When is Whale Season in Plett?



Plettenberg Bay is part of the migratory whale route for several species during the months of May through to October. Southern right whales leave their Antarctic feeding ground to frolic in the warm waters of the Cape coast. Here they mate, calve and generally hang out, occasionally flopping a

tail up, or sticking their heads out of the water to check out the humans. They are so easy to watch. Humpback whales arrive with their calves and give birth in the protective waters of the bay. They can often be seen feeding directly behind the waves and are often spotted around Robberg Nature Reserve. Bryde's whales are permanent residents of the bay and are often seen in social groups, and the predator orca whale also makes a few guests appearances. Other marine life to be experienced this time of year include pods of bottlenose and the shy indo-pacific

humpback dolphins. A breeding colony of cape fur seals along the Robberg Nature Reserve keep our visiting hammerhead and great white sharks entertained. The Whale Heritage Site programme is an initiative created by the WCA and supported by World Animal Protection, which recognises destinations around the world where coastal communities work together to protect, respect and celebrate cetaceans and their habitats.

Source: <https://www.plett-tourism.co.za/when-is-whale-season-in-plett/>

Lew Geffen | Sotheby's

INTERNATIONAL REALTY

Sole Mandate



More pics @ www.sothebysrealty.co.za - Web Ref: SIR109594

KEURBOOMS RIVER

House - 3 Bedrooms, 2 Bathrooms (MES), Built-in Braai, Easy Living, Pet Friendly, Access to Lagoon and Coast, Lagoon Views, Solar System, Boat Launching Ramp, Sunny & Warm House.

Asking Price R 5 500 000

Call: Elbie 082 569 2588



Julie Retief

082 412 3000
editor@mossview.co.za

OBJECTIVES OF THE **Bitou News**

Your Free Community Paper

1. Promoting of local businesses in their own environment.
2. Creating an opportunity for Plett residents to sell any service, products or second hand goods in their area.
3. The provision of information of interest to the Plett community and our visitors.
4. The establishment of a feeling of belonging to our community.

Bitou News

Your Free Community Paper

is proudly published and printed by:
MOSSVIEW (PTY) LTD
in Mossel Bay.
044 690 3006
103 Montagu Place,
Spring Street, Mossel Bay.

EMERGENCY NUMBERS

AIDS Helpline	0800 012 322
All Wild Animals	044 533 2185
Ambulance	10177 (Govt)
	072 054 9110
ER24 - Ambulance	083 320 1199
Animal Welfare	083 287 9917
Baycare (911)	044 533 6444
Birds - All	082 414 4416
Cows, Goats, Pigs on the N2	083 677 9401
Doctors	044 533 0186
	044 533 0400
FASMA	044 533 0515
	079 640 6883
Fire & Rescue (24hrs)	044 533 5000
Plett Medi Clinic	044 501 5100
Locksmiths	083 701 3434
Municipality	044 501 3000
NSRI	082 990 5975
Police	044 501 1900
	044 501 1906
	044 501 1907
Snake Rescue	082 667 6588
Stop Gender Violence	080 015 0150
Vehicle Breakdown	072 250 5316
Dolphin Shuttle	078 704 6508

From The Editor:

Asking A 100-Year-Old Man For His Health Secrets

Everyone asked a 100-year-old man and his 98-year-old wife for their health secrets.

your wife is very healthy as well?"

The old man said, "I'll tell you my secret. I've been married for 75 years. I promised my wife when we got married that when we quarrel, the loser has to walk for 5 kilometres. So I've been walking 5 kilometres every day for past 75 years!"

The old man answered, "That is another secret. For 75 years every single day she has been following me to make sure I really walk the full 5 kilometres!"

Julie Retief

(Redaksie)
082 412 3000
editor@mossview.co.za
Source:<https://www.sunnyskyz.com/feel-good-story/4045/A-Very-Kind-And-Good-Man>

Everyone applauded and asked again, "But how come

ADVERTISE HERE!

For 2024!!!

Call Bert

072 766 3315 • 044 690 3006

marketing@mossview.co.za

Need a bookkeeper for your SME but cannot afford a person fulltime?

I offer freelance bookkeeping services including all monthly management reports, calculation of monthly statutory return figures and, by arrangement, submission thereof.

ACCOUNTING

BOOKKEEPING

Contact me for more info.
Tracy Gogle 0745157530
or **tracy@tracyg.co.za**

Joint Mandate



More pics @ www.sothebysrealty.co.za - Web Ref: SIR109603

WHALE ROCK SUN

House - 4 Bedrooms, 3,5 Bathrooms, Swimming Pool, Flatlet above Garage, Double Garage, Sea & Robberg Views, Fireplace, Scullery & Pantry, Inverter 5kW, Water Tanks.

Asking Price R 5 950 000

Call Werner 084 351 8992

Sole Mandate



More pics @ www.sothebysrealty.co.za - Web Ref: SIR108273

CUTTY SARK

House - 5 Bedrooms, 3,5 Bathrooms, Double Garage, Separate Flatlet, Enclosed Sunroom, Staff Accommodation, Large 2nd Lounge, Viewing Roof.

Asking Price R 4 980 000

Call Carrie 082 566 1881

Launch of Township Tourism Survey



Plett Tourism launches a Township Tourism Survey: Empowering Communities for Positive Change

"We are excited to announce the launch of this new local survey designed to gather valuable information about our township tourism businesses. Participation is crucial in helping us understand the needs, priorities, and inspirations for our community's future," says Patty Butterworth, CEO Plett Tourism. As local Plett communities evolve and face new challenges, the importance of effective tourism projects and quality assurance from local government becomes increasingly evident. As the officially recognised tourism authority for Plettenberg Bay working together with the Bitou Municipality, the Plett Tourism Association often turns to various tools to gather valuable information, thus the launch of a local township tourism survey to identify the diverse needs of township tourism businesses. The survey will serve as a vital tool for gathering insights

directly from the tourism community. It provides an avenue for individuals to voice their opinions, concerns, and suggestions regarding tourism in their community, ranging from public services and infrastructure to individual initiatives. By leveraging the input gathered through such surveys, Plett Tourism can make informed decisions that better align with the priorities and preferences of the communities.

The initiation of a local township tourism survey marks a proactive step towards fostering community engagement and participation in the governance process. Plett Tourism has contracted local resident Sihle Ntsatha to assist with the project management and administration of the new survey. The 'Township Tourism Survey' project launched on the 29th of January and will be completed on the 29th of February 2024. She will be conducting research, scheduling time to meet with township tourism business owners in each Ward at

designated community locations and will be overseeing the administrative process required to record the information.

All personal details collected during the research will remain confidential as per the POPI Act. General information will be used to assist the Plett Tourism Association with a township tourism strategy going forward and will provide valuable information about different ward priorities in the tourism sector.

The launch of a local township tourism survey represents a proactive approach to inclusive tourism and community empowerment. By soliciting input directly from residents and businesspeople, the Plett Tourism Association can gain valuable insights and foster a sense of ownership and belonging among industry members. Through careful planning and engagement, local surveys can serve as a powerful tool for driving positive change and building stronger, more resilient communities.

The Plett Tourism Association would like to thank the township communities in advance for their participation and commitment to the growth and well-being in Bitou. Together, Bitou can work towards building a brighter future.

Source: <https://www.plett-tourism.co.za/township-tourism-survey-to-empower-communities-in-positive-change/>

**HOME
IS OUR
STORY**

Seeff

Expertise Built Through Generations of Trust



4 bedrooms • 5½ bathrooms • 3 garages

R 8 990 000

TURTLE CREEK VILLA ON EXCLUSIVE GOLF ESTATE

This imposing residence, with its central courtyard around which the house is built, neat exterior, clay tile roof and use of wrought iron balustrades and light fittings has the look of a traditional Mediterranean villa.



3 bedrooms • 3 bathrooms • 2 garages

R 7 750 000

PERFECTLY POSITIONED IN BRACKENRIDGE WITH LOVELY MOUNTAIN VIEWS

Situated on an elevated stand within the secure estate of Brackenridge, this definitely is no ordinary home. It is exciting, modern, inviting and artistically designed to capture the sun from every angle with a stunning outlook towards the Tsitsikamma Mountains.

Daniel van Renen 082 883 6271
Web ref: RLS946392

Connie Peel 083 353 5971 | Carol Zoutendyk 083 300 1121
Web ref: RLS939028



5 bedrooms • 5½ bathrooms • 2 garages

R 7 650 000

WARMTH & LIGHT WITH A BEAUTIFUL VIEW

This tastefully renovated property offers beautiful views of the Robberg Peninsula and the rural areas on the southern and western sides of Plett. Located at the very top of Cutty Sark, it is filled with light and warmth from its northern, eastern, and western aspects and is ideal for a growing or extended family.

Paul Lewry 082 857 8835
Web ref: RLS921145



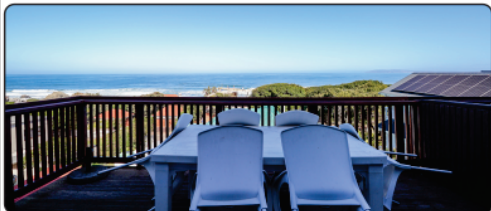
5 bedrooms • 4 bathrooms • 2 garages

R 6 300 000

SPACIOUS FAMILY HOME IN SEASIDE LONGSHIPS AREA

Conveniently located close to the beach, this spacious family home is perfect for a large family. Enter into an inviting and double volume living area, with an open plan lounge and dining room leading to a large family / games room. Sliding doors open out onto a wonderful play area for children, with wooden jungle gym and play equipment.

Roscilla Sardini 067 760 5118
Web ref: RLS944528



2 bedrooms • 1 bathroom • 1 garage

R 2 500 000

LOVELY SEA VIEWS, WALK TO THE BEACH, GREAT POSITION

This apartment has lovely sea views from the balcony and living room. Close to the beach. Situated in the centre of Keurbooms Village, 2 Bedrooms, 1 bathroom, kitchen, open plan living area. Small storeroom. This seldom comes available, grab the opportunity now. Needs your TLC.

Dirk Green 082 814 4508 | Elize Green 072 119 3710
Web ref: RLS944140



1 bedroom • 1 bathroom • 1 garage

R 1 525 000

APARTMENT CENTRALLY SITUATED

Ideal opportunity to get your foot in the door of Plettenberg Bay's Property Market. This spacious 1-bedroom Green Point Mews apartment offers the ideal blend of comfort, convenience, and security.

Susan Duncan 072 968 0779
Web ref: RLS941102

www.seeff.com

private property

ooba

In association with

HAMPTONS

Plettenberg Bay Office 044 533 0311

plett@seeff.com

plettenbergbay.seeff.com

Family-friendly accommodation & summer events abound in Plett



This summer, Plettenberg Bay offered a diverse lineup of family-friendly events and festivals which took place across Bitou during the peak summer holiday months of December and January.

In addition to soaking up the sun along the destination's Indian Ocean coastline or enjoying a crisp glass of bubbly at one of the Plettenberg Bay Wine Route's boutique wine farms, guests experienced an unforgettable summer escape in tandem with one or more of the unique events and festivals taking place during the season. The high season calendar kicked-off with the traditional Plett Rage, recognised as the 'granddaddy' of rages in South Africa. Plett Rage is that long-awaited holiday time during the first week of December, when schools break up and students are ready to celebrate before embarking on the next phase of their lives. Plett is the oldest matric party destination. While other matric rage visitation has been growing rapidly, Plett Rage has seen slow but steady growth and has become well-known as a safe and streamlined student experience

which includes transportation, food, lodging and even activities.

According to Plett Rage organisers, they employed approximately 300 local staff (managers, assistants, drivers, marshalls, security, venue staff, builders, promoters) and contracted local businesses for printing, catering, packaging, storage and accommodation. The estimated value of this investment is about R4 million. The projected income for the town for 2023's Plett Rage was estimated at R36 million based on 3000 students spending an average of R1500 per day per student, over an eight-day period. The Plett Rage brand is big business. It brings a fortuitous income to the local economy, introduces young people to the attractions of Plett as a holiday destination, and it has become very attractive to sponsors: entry level car companies, banks, financial management institutions, clothing brands and the like. As an example of music and student festivals, Plett Rage stands tall as an established and innovative event.

'This year's event was one of the best we have ever experienced. Ragers had the time of their lives, with the offering of four different venues with music featuring some of South Africa's most well known and emerging artists. This group of Ragers were well mannered, well behaved, and just out to have a good time and enjoy their first taste of freedom in the incredible

surroundings of our beloved Plettenberg Bay. The team came together alongside all the incredible local suppliers, to produce a well managed, safe and major-incident free event. We are incredibly proud of Rage 2023 and are already getting stuck into planning for an even bigger and better Rage 2024,' comments Plett Rage owner Ronen Klugman.

We Love Summer was a welcome event to return to the shores of Plett. With more than 1400 tickets sold, the event took flight using mostly a team of locally sourced suppliers for infrastructure, staff, security and safety, medics, production, artists, and catering services. The event was a resounding success – held at a uniquely Plett venue: Adventureland Water Park – and the organisers plan to introduce a second date for their 2024 sessions.

Continue reading page 7...



Family-friendly accommodation & summer events abound in Plett



Production and operations manager, Kalcey Polson, comments, 'After 10 years of We Love Summer, Plett is still one of our favourite events to do: from the amazing energy on the dancefloor to the beautiful, local venue: Adventureland waterpark. We saw magic happen on the 29th of December where friends from all over came to play and have fun in the sun. We managed to build a strong Plett community where we created an event by the people for the people. We are excited to be part of the Plett family again and look forward to a bigger and better We Love Summer 2024, watch this space!' These are only two events on a jam-packed summer calendar that included concerts, al fresco cinema, sporting events and polo, to name a few. In addition to the events, the town was buzzing with, predominantly, South Africans enjoying their long-awaited summer break. The hospitality sector is undoubtedly



the leading source of income for Plett, generating an average of R3.9 billion in earnings annually pre-COVID. Tourism contributes significantly to Plett's annual GDP and it is the largest employer in the town.

As a world-class destination, international and South African guests flock to award-winning and internationally recognised beaches. The South African domestic market (South African travellers) makes up approximately 90% of the sector's income during the month of December, and the majority of businesses in Plett rely on that December trade to sustain them, as it contributes to an average of 50% of their annual profit. Affordable family travel is in high demand along the coastal areas of the Garden Route. According to the General Manager of the Keurbooms Lagoon Caravan Park, Christopher Hops, the park is on track to steadily increase their bed nights during the summer months and has seen positive growth. The park's accommodation stats during December and January each year cover approximately 90% of camping income for the whole year.

A short survey of industry individuals reported the following in comparison to the same period in 2022: the full-service accommodation sector, restaurants and retail sectors saw numbers equal to or greater than 2022, and self-catering, short-term home rentals and outdoor activities reported numbers equal to or less than those in 2022. The Plett Tourism Association does quarterly surveys of sectors to ensure that the town's marketing positioning is aligned with the town's products and demands of



the consumer (traveller).

ABOUT THE PLETT TOURISM ASSOCIATION

The Plett Tourism Association is a non-profit association that drives tourism for Plettenberg Bay for its members and for the Bitou Municipality. Tourism is arguably the largest industry in Bitou and one of the flagships along the Garden Route in the Western Cape of South Africa. Plett Tourism is a partnership of the hospitality community and the local municipality that aims to drive business growth through compelling marketing and targeted initiatives that maximise the benefits of tourism to its guests, members and the community.

Source: <https://www.plett-tourism.co.za/family-friendly-accommodation-summer-events-abound-in-plett/>



NEMA PUBLIC PARTICIPATION PROCESS

SECTION 24G APPLICATION FOR THE UNLAWFUL CONSTRUCTION OF A TOURIST FACILITY, FARM DAM AND ASSOCIATED INFRASTRUCTURE ON PORTION 4 OF THE FARM HARKERVILLE NO. 428, PLETTENBERG BAY.

Notice is hereby given of the intention to submit an application, and the public participation, process in terms of the National Environmental Management Act, 1998 (Act No. 107 of 1998), as amended ("NEMA"), Environmental Impact Assessment Regulations 2014, as well as a Water Use License Application in terms of the National Water Act (Act 36 of 1998)(NWA) for the unlawful development on Portion 4 of the Farm Harkerville No. 428, Plettenberg Bay, Western Cape. The unlawful activities are in contravention of Section 24F of the NEMA, and includes activities listed in terms of the NEMA EIA Regulations, 2014.

EnviroAfrica cc has been appointed by Mrs Irene Vermeulen, to undertake Section 24G Application for Environmental Authorisation process.

Application for environmental authorization to undertake the following activities*:

Government Notice R327 (Listing Notice 1 of 2014): Activities 12, 19, 27 and 28

Application in terms of NWA: Sections 21 (b)(c) and (l)*.

**Please note that should the listed activities above change or additional activities be identified during the course of the NEMA Application process, registered I&APs will be notified of any changes.*

Project Description & Location: The unlawful development in terms of NEMA includes the construction of tourist facilities (restaurant and farm), parking area, main house (used as a guest house), kids play area, plant nursery, labourer's cottages and other associated infrastructure, and the development of a farm dam on Portion 4 of Farm Harkerville No. 428. The activity includes the commencement of the clearance of indigenous vegetation, construction of the dam within a watercourse, and the transformation of land without environmental authorisation.

The site is located at the Shabby Fufu Lifestyle Farm, on the south side of the N2 and located approximately 8km west of Plettenberg Bay. Access to the site is from the N2.

Site co-ordinates:

Farm Store: **34° 02' 42.03" S, 23° 16' 36.48"E.**

Farm dam: **34° 02' 44.90" S, 23° 16' 37.75"E.**

Public Participation: Interested and Affected parties (I&APs) are hereby notified of the application and invited to register (in writing) and/or provide initial comments and identify any issues, concerns or opportunities relating to this project to the contact details provided below, on or before 20 March 2024. In order to register or submit comment, I&APs should refer to the project name, and provide their name, address & contact details (indicating your preferred method of notification) and an indication of any direct business, financial, personal, or other interest which they have in the application. Please note that future correspondence will only be sent to registered Interested and Affected Parties. You are also requested to pass this information to any person you feel should be notified.

Plases note that only Registered I&APs will be notified of the availability of reports and other written submissions made (or to be made) to the Department by the applicant, and be entitled to comment on these reports and submissions; will be notified of the outcome of the application, the reasons for the decision, and that an appeal may be lodged against a decision; and will be notified of the applicant's intention to appeal the decision, and where and for what period the appeal submission will be available for inspection.

Consultant: EnviroAfrica CC.P.O. Box 5367, Helderberg, 7135 / Fax 086 512 0154 / Tel: 021 851 1616 / E-mail: clinton@enviroafrica.co.za









USEFUL NUMBERS

24hr Crisis Helpline	044 532 7547
Alcoholics Anonymous	0861 435 722
Breast Cancer	044 533 3062
CANSA Care	044 533 1813
Dentist	044 533 2734
	044 533 2318
FAMSA	044 533 0515
Health Care	044 533 0212
Historical Society	082 490 9910
Narcotics Anonymous	072 628 6290
Plett Animal Welfare	083 287 9917
Reptile Rescue	044 534 8056

BITOU MUNICIPALITY

EMERGENCY	044 533 5000
SEA RESCUE	044 533 2941
	044 533 2744
AFTER HOURS	044 501 3122
SWITCHBOARD	044 501 3000
Executive Mayor	044 501 2490
Municipal Manager	044 501 3005
Protection Services	044 201 3230
Simunye Centre	044 501 3134
Town Engineer	044 501 3265
Town Electrical Engineer	044 501 3277
Beach Control	044 501 3125
Chief - Health Services	044 501 3233
Day Hospital	044 501 3200
Kwanokuthula Clinic	044 501 3132
New Horizons Clinic	044 501 3131
Administration	044 501 3006
Community Services	044 501 3230
Corporate Services	044 501 3060
Finance	044 501 3021
Public Works	044 501 3064
Central Library	044 501 3130
Kwanokuthula Library	044 501 3127
New Horizons Library	044 501 3128

WEATHER FOR THIS WEEK

 <p>FRI Feb, 16th</p> <p>22°C / 14°C</p> <p>A couple of showers in the morning; otherwise, decreasing clouds and windy</p>	 <p>SAT Feb, 17th</p> <p>24°C / 14°C</p> <p>Nice with more sunshine than clouds</p>	 <p>SUN Feb, 18th</p> <p>27°C / 16°C</p> <p>Breezy and pleasant with plenty of sun</p>	 <p>MON Feb, 19th</p> <p>32°C / 22°C</p> <p>Mostly sunny and warmer</p>
 <p>TUES Feb, 20th</p> <p>29°C / 15°C</p> <p>Sunshine and patchy clouds</p>	 <p>WED Feb, 21st</p> <p>24°C / 12°C</p> <p>Windy and not as warm with times of clouds and sun</p>	 <p>THUR Feb, 22nd</p> <p>23°C / 15°C</p> <p>Mostly sunny</p>	 <p>FRI Feb, 23rd</p> <p>25°C / 18°C</p> <p>Sunny</p>

TIDE TABLE

	16 FEB		17 FEB	18 FEB	19 FEB	20 FEB		21 FEB
HIGH	08:33	LOW	03:04	04:57	06:51	07:59	HIGH	02:41
LOW	14:56	HIGH	09:44	11:30	13:09	14:08	LOW	08:42
HIGH	21:09	LOW	16:28	18:18	19:32	20:19	HIGH	14:49
LOW	02:00	HIGH	22:49	00:48	01:57	02:00	LOW	20:53

SUDOKU

	2		1					
5		7	3	8		1	2	4
		4						8
1		5			8		6	7
3			4		5			1
2	7		6			4		9
6						5		
4	8	2		9	3	7		6
				6		9		

SOLUTION

Turn upside down to see answers.

3	6	8	9	4	2	1	5	7
9	1	7	3	5	6	2	8	4
2	4	5	7	1	8	6	3	9
6	5	1	4	3	9	8	7	2
1	8	2	5	7	4	9	6	3
7	9	3	2	8	6	5	4	1
8	3	9	2	5	7	1	4	6
4	8	7	1	6	3	2	9	5
5	7	6	4	9	1	3	2	8

Puzzle by www.1sudoku.com

University Fellowship Opportunity

Calling All Young Grade 12 Entrepreneurs to apply for the University Programme.

13 February 2024: The Allan Gray Orbis Foundation's Fellowship Programme is open for applications on 1 February 2024. The Foundation is looking for young entrepreneurs transitioning into university to apply. The programme is open to individuals who have big entrepreneurial aspirations and who want to make a big impact not just in their lives, but also in their community, city and country.

The Foundation is now calling on learners who are aspiring entrepreneurs from the matric class of 2024 to apply now for this Fellowship opportunity that will pave the way to a university education, entrepreneurial mindset development interventions, personal and academic development support. The Fellowship recipients receive needs-based funding for university based on an annual household income threshold funding model.

The programme marks the start of a unique entrepreneurship journey as Candidate Fellows are nurtured in the development of an entrepreneurial mindset, ethical values and strong leadership skills as they pursue their university studies. In addition to the academic and financial support, Candidate Fellows are assigned to a Personal Development Officer to help transition into a new academic environment and an Entrepreneurial Leadership Officer, who probes them to flex their entrepreneurial muscles and a respected industry mentor, who deepens their understanding of entrepreneurial traits and concepts in the working world.

Fellowship Applications Requirements include:

- South African citizenship
- Applicants must be under the age of 21 in the year of application.
- Minimum of 60% in pure Mathematics or a minimum of 80% in Mathematical Literacy for final Grade 11 results
- Minimum average of 70% for final

Grade 11 results (excluding Life Orientation)

- Intention to study towards a Commerce, Science, Engineering, Law, Humanities, Arts & Health Science degree (excluding Medicine, Veterinary Science and Dentistry) at the University of the Witwatersrand, University of Johannesburg, University of Cape Town, Nelson Mandela University, Rhodes University, University of the Western Cape, Stellenbosch University, University of Pretoria, University of the Free State, TSIBA and University of KwaZulu-Natal
 - Applicants with a combined annual household income of R1 million and below will receive full funding, whereas applicants with a combined household income of above R1 million will receive needs-based funding.
- Applications closes on 30 April 2024, 17:00 SAST.
Visit www.allangrayorbis.org to download an application form, or to apply online



An Aerial Perspective

Drone Surveying

Need to see the Bigger Picture? How about..... An Aerial Perspective?

- **Roof Inspections**
- **Thermal HVAC and solar panels**
- **Roof measurements**
- **Site layout • Access planning**
- **Construction progress images**
- **Inspections • Payment milestones**
- **Insurance claims**
- **Property advertising**
- **Wind turbine inspections • Etc.**

Years of Experience • Exceptional Service
High Quality Results

Alan Brown

An Aerial Perspective, Pilot in Command
ZT-WUZ

Mobile/WhatsApp/Telegram: **+27713855176**
SACAA Lic: 0275504046
www.anaerialperspective.co.za
SACAA Certified with ROC, all SACAA credentials available upon request



GYCADS for Sale in Plettenberg Bay

**Large Plants from R1200.00,
Seedlings from R120.00**

Permits are issued for all plants.

Contact: Albert @ 0826763201

ACCOMMODATION

Backpackers

Amakaya044 533 4010
Crag's Luxury Tents072 270 2114

Bed & Breakfasts

T'Niqua Stable Inn044 533 4830

Guest Houses

T'Niqua Stable Inn044 533 4830

Holiday Resorts

Dune Park044 535 9606
Forever Resorts044 535 9309

Hotels

Beacon Island044 533 1120
Kurland044 534 8082

HEALTH & BEAUTY

Ambulance

Government10177

General Practitioners

Dr. Donald044 533 2415

Hospitals

Plett Medi-Clinic044 501 5100

Optometrists

Plett Optical044 533 2191

Physiotherapists

Tracy de Necker
Physiotherapy082 221 1302

LEISURE

Adventure

Bloukrans Bungy042 281 1458
River Ferries083 254 3551
SkyDive Plett082 905 7440
Tsitsikamma Falls082 578 1090
Tsitsikamma
Canopy Tours042 281 1836
Tenikwa044 534 8170

Attractions

Birds of Eden044 534 8906
Knysna
Elephant Park044 532 7732
Lawnwood Snake
Sanctuary044 534 8056
Monkeyland044 534 8906
Wolf Sanctuary044 532 7539

Game Reserves

Buffalo Hills044 535 9739

Golf

Goose Valley044 533 5082
Plett Country Club044 533 2132

Tours & Transfers

Paradise Tours &
Transfers078 256 6456

SHOPPING

Advertising

Bitou News072 766 3315

Animal Care

PAWS083 287 9917
Snake Rescue044 534 8056

Auditing & Accounting

Mazars044 533 0510
Tax Smhart044 533 0598

Banks

ABSA044 501 2200
FNB044 501 2400
Nedbank044 501 1200
Standard Bank044 501 3608

Centres (Shopping)

Market Square044 533 4024

Cleaning Services

The Cleaning Company 082 447 3919

Computers

The Computer Shop044 533 3275

Curtains

Curtain Magic044 533 0217

Interior Decor

Wallpapering082 450 9754

Pest Control

Plett Pest & Borer083 228 9031

Postal Services

Post Office Plett044 533 1260

Printing

UPrint072 766 3315

Ratepayers

Plett Ratepayers044 533 4387

Real Estate Agencies

Seeff044 533 0311
Sotheby's044 533 2529

Secretarial Services

Maggie Zeelie084 514 6354

Solar

Solar Solutions073 166 0262

Tax Consultants

Tax Smhart044 533 0598

Veterinary

Robberg Vet Clinic044 533 0124

Whisperer

The House Whisperer ...072 528 3434

Yoga

Kula Yoga Space082 370 0939

TO ADVERTISE
Bert - 072 766 3115

DISCLAIMER:

Opinions expressed in Bitou News are not necessarily those of the Publisher or Editor. Whilst every care is taken in the preparation of this paper, the Publisher and Editor cannot accept responsibility for incorrect information supplied or published.

COPYRIGHT:

Articles and/or photos in this paper may only be copied (in any shape or form) with the express written consent of the Publisher.

ADVERTISE HERE!
**BUSINESS
DIRECTORY**
072 766 3315
R400 for 26 Editions

Promotional Products



Custom Products



PRINT

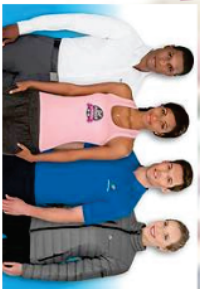


FOR ALL YOUR PRINTING REQUIREMENTS
Fast | Quality | Efficient

Display



Apparel & Headwear



Workwear



For a **FREE** quotation • Contact Bert

- marketing@mossview.co.za
- 044 690 3006 / 072 766 3315