

**SCREENING REPORT FOR AN ENVIRONMENTAL AUTHORIZATION AS  
REQUIRED BY THE 2014 EIA REGULATIONS – PROPOSED SITE  
ENVIRONMENTAL SENSITIVITY**

**EIA Reference number:** n/a

**Project name:** De Hoop / Malmesbury 132 kV OHL

**Project title:** De Hoop / Malmesbury 132 kV OHL

**Date screening report generated:** 18/06/2024 16:18:14

**Applicant:** Swartland Municipality

**Compiler:** EnviroAfrica

**Compiler signature:**  
.....

**Application Category:** Utilities Infrastructure | Electricity | Distribution and Transmission | Powerline

# Table of Contents

- Proposed Project Location ..... 3
  - Orientation map 1: General location ..... 3
- Map of proposed site and relevant area(s) ..... 4
  - Cadastral details of the proposed site ..... 4
  - Wind and Solar developments with an approved Environmental Authorisation or applications under consideration within 30 km of the proposed area ..... 5
  - Environmental Management Frameworks relevant to the application ..... 6
- Environmental screening results and assessment outcomes ..... 6
  - Relevant development incentives, restrictions, exclusions or prohibitions ..... 6
  - Proposed Development Area Environmental Sensitivity ..... 6
  - Specialist assessments identified ..... 7
- Results of the environmental sensitivity of the proposed area ..... 9
  - MAP OF RELATIVE AGRICULTURE THEME SENSITIVITY ..... 9
  - MAP OF RELATIVE ANIMAL SPECIES THEME SENSITIVITY ..... 10
  - MAP OF RELATIVE AQUATIC BIODIVERSITY THEME SENSITIVITY ..... 11
  - MAP OF RELATIVE ARCHAEOLOGICAL AND CULTURAL HERITAGE THEME SENSITIVITY ..... 12
  - MAP OF RELATIVE CIVIL AVIATION THEME SENSITIVITY ..... 13
  - MAP OF RELATIVE DEFENCE THEME SENSITIVITY ..... 14
  - MAP OF RELATIVE PALEONTOLOGY THEME SENSITIVITY ..... 15
  - MAP OF RELATIVE PLANT SPECIES THEME SENSITIVITY ..... 16
  - MAP OF RELATIVE TERRESTRIAL BIODIVERSITY THEME SENSITIVITY ..... 20

# Proposed Project Location

Orientation map 1: General location



## Map of proposed site and relevant area(s)



## Cadastral details of the proposed site

Property details:

No	Farm Name	Farm/ Erf No	Portion	Latitude	Longitude	Property Type
1	ABBOTSDALE	373	0	33°29'49.33S	18°41'15.21E	Erven
2	ABBOTSDALE	311	0	33°29'35.93S	18°40'52.79E	Erven
3	MALMESBURY	11217	0	33°28'29.32S	18°41'47.85E	Erven
4	MALMESBURY	12496	0	33°28'29.82S	18°41'47.84E	Erven
5	MALMESBURY	12567	0	33°28'20.68S	18°41'33.25E	Erven
6	MALMESBURY	12567	0	33°28'20.23S	18°41'33.39E	Erven
7	MALMESBURY	12081	0	33°28'28.48S	18°41'43.58E	Erven
8	MALMESBURY	12566	0	33°28'20.34S	18°41'33.4E	Erven
9	MALMESBURY	12527	0	33°28'14.3S	18°41'30.96E	Erven
10	OLYPHANTS FONTYN	766	0	33°28'23.88S	18°41'36.11E	Farm
11		1113	0	33°28'39.28S	18°41'24.85E	Farm
12		1113	0	33°29'26.97S	18°42'0.37E	Farm
13	AMOSKUIL	997	0	33°30'27.55S	18°40'53.28E	Farm
14	OLYPHANTS FONTYN	766	0	33°28'56.86S	18°41'42.04E	Farm
15	OLYPHANTS FONTYN	766	20	33°28'31.56S	18°41'32.56E	Farm Portion
16	OLYPHANTS FONTYN	766	14	33°28'32.12S	18°41'35.22E	Farm Portion
17	OLYPHANTS FONTYN	766	15	33°28'23.16S	18°41'35.99E	Farm Portion
18		1113	0	33°28'47.13S	18°41'34.22E	Farm Portion
19		1113	1	33°28'25.28S	18°40'59.99E	Farm Portion
20	OLYPHANTS FONTYN	766	19	33°28'31.72S	18°41'31.62E	Farm Portion
21	OLYPHANTS	766	8	33°28'33.14S	18°41'37.13E	Farm Portion

	FONTYN					
22		1113	1	33°28'19.67S	18°40'53.32E	Farm Portion
23	OLYPHANTS FONTYN	766	13	33°28'33.39S	18°41'43.37E	Farm Portion
24	OLYPHANTS FONTYN	766	10	33°28'32.84S	18°41'33.12E	Farm Portion
25	OLYPHANTS FONTYN	766	22	33°28'27.98S	18°41'41.82E	Farm Portion
26	OLYPHANTS FONTYN	766	14	33°28'29.97S	18°41'30.43E	Farm Portion
27	OLYPHANTS FONTYN	766	14	33°28'32.52S	18°41'36.49E	Farm Portion
28	OLYPHANTS FONTYN	766	24	33°28'30.49S	18°41'33.48E	Farm Portion
29		1113	0	33°28'46.28S	18°41'34.23E	Farm Portion
30	AMOSKUIL	997	0	33°30'30.13S	18°41'32.23E	Farm Portion
31		1113	0	33°29'26.97S	18°42'0.37E	Farm Portion
32	OLYPHANTS FONTYN	766	21	33°28'31.33S	18°41'33.02E	Farm Portion
33	OLYPHANTS FONTYN	766	8	33°28'33.08S	18°41'39.35E	Farm Portion
34	OLYPHANTS FONTYN	766	8	33°28'21.7S	18°41'22.99E	Farm Portion
35	OLYPHANTS FONTYN	766	18	33°28'55.58S	18°41'44.24E	Farm Portion
36	OLYPHANTS FONTYN	766	10	33°28'33.11S	18°41'33.18E	Farm Portion
37		1113	4	33°28'35.35S	18°41'19.1E	Farm Portion
38	OLYPHANTS FONTYN	766	8	33°28'31.11S	18°41'31.34E	Farm Portion
39	OLYPHANTS FONTYN	766	10	33°28'30.42S	18°41'29.58E	Farm Portion
40	OLYPHANTS FONTYN	766	15	33°28'29.16S	18°41'31.91E	Farm Portion

Development footprint<sup>1</sup> vertices:  
No development footprint(s) specified.

### Wind and Solar developments with an approved Environmental Authorisation or applications under consideration within 30 km of the proposed area

No	EIA Reference No	Classification	Status of application	Distance from proposed area (km)
1	12/12/20/1985	Solar PV	Approved	23.3
2	12/12/20/2217	Wind	Approved	27.6
3	12/12/20/2638/AM3	Wind	Approved	18.6
4	12/12/20/2638/AM2	Wind	Approved	18.6
5	12/12/20/2109/AM1	Solar PV	Approved	10.6
6	12/12/20/2393/AM2	Solar PV	Approved	22.8

<sup>1</sup> “development footprint”, means the area within the site on which the development will take place and includes all ancillary developments for example roads, power lines, boundary walls, paving etc. which require vegetation clearance or which will be disturbed and for which the application has been submitted.

7	12/12/20/2384	Solar PV	Approved	4.5
8	12/12/20/2109/AM3	Solar PV	Approved	10.6
9	12/12/20/2217/AM2	Wind	Approved	27.6
10	12/12/20/2393	Solar PV	Approved	22.8
11	12/12/20/2638	Wind	Approved	18.6
12	12/12/20/2109/AM2	Solar PV	Approved	10.6
13	12/12/20/2109	Solar PV	Approved	10.6
14	12/12/20/2400	Solar PV	Approved	29.9
15	12/12/20/2400/AM2	Solar PV	Approved	29.9
16	12/12/20/2217/AM3	Wind	Approved	27.6

## Environmental Management Frameworks relevant to the application

No intersections with EMF areas found.

## Environmental screening results and assessment outcomes

The following sections contain a summary of any development incentives, restrictions, exclusions or prohibitions that apply to the proposed development site as well as the most environmental sensitive features on the site based on the site sensitivity screening results for the application classification that was selected. The application classification selected for this report is:

**Utilities Infrastructure | Electricity | Distribution and Transmission | Powerline.**

### Relevant development incentives, restrictions, exclusions or prohibitions

The following development incentives, restrictions, exclusions or prohibitions and their implications that apply to this site are indicated below.

Incentive, restriction or prohibition	Implication
Strategic Transmission Corridor-Central corridor	<a href="https://screening.environment.gov.za/ScreeningDownloads/DevelopmentZones/Combined_EGI.pdf">https://screening.environment.gov.za/ScreeningDownloads/DevelopmentZones/Combined_EGI.pdf</a>
Strategic Gas Pipeline Corridors-Phase 1a & 1b: Saldanha to Ankerlig and Saldanha to Mossel Bay	<a href="https://screening.environment.gov.za/ScreeningDownloads/DevelopmentZones/Combined_GAS.pdf">https://screening.environment.gov.za/ScreeningDownloads/DevelopmentZones/Combined_GAS.pdf</a>
South African Conservation Areas	<a href="https://screening.environment.gov.za/ScreeningDownloads/DevelopmentZones/SACAD_OR_2023_Q4_Metadata.pdf">https://screening.environment.gov.za/ScreeningDownloads/DevelopmentZones/SACAD_OR_2023_Q4_Metadata.pdf</a>

### Proposed Development Area Environmental Sensitivity

The following summary of the development site environmental sensitivities is identified. Only the highest environmental sensitivity is indicated. The footprint environmental sensitivities for the proposed development footprint as identified, are indicative only and must be verified on site by a suitably qualified person before the specialist assessments identified below can be confirmed.

Theme	Very High sensitivity	High sensitivity	Medium sensitivity	Low sensitivity
Agriculture Theme	X			

Animal Species Theme			X	
Aquatic Biodiversity Theme	X			
Archaeological and Cultural Heritage Theme				X
Civil Aviation Theme		X		
Defence Theme				X
Paleontology Theme			X	
Plant Species Theme			X	
Terrestrial Biodiversity Theme	X			

### Specialist assessments identified

Based on the selected classification, and the known impacts associated with the proposed development, the following list of specialist assessments have been identified for inclusion in the assessment report. It is the responsibility of the EAP to confirm this list and to motivate in the assessment report, the reason for not including any of the identified specialist study including the provision of photographic evidence of the site situation.

No	Specialist assessment	Assessment Protocol
1	Agricultural Impact Assessment	<a href="https://screening.environment.gov.za/ScreeningDownloads/AssessmentProtocols/Gazetted_General_Agriculture_Assessment_Protocols.pdf">https://screening.environment.gov.za/ScreeningDownloads/AssessmentProtocols/Gazetted_General_Agriculture_Assessment_Protocols.pdf</a>
2	Landscape/Visual Impact Assessment	<a href="https://screening.environment.gov.za/ScreeningDownloads/AssessmentProtocols/Gazetted_General_Requirement_Assessment_Protocols.pdf">https://screening.environment.gov.za/ScreeningDownloads/AssessmentProtocols/Gazetted_General_Requirement_Assessment_Protocols.pdf</a>
3	Archaeological and Cultural Heritage Impact Assessment	<a href="https://screening.environment.gov.za/ScreeningDownloads/AssessmentProtocols/Gazetted_General_Requirement_Assessment_Protocols.pdf">https://screening.environment.gov.za/ScreeningDownloads/AssessmentProtocols/Gazetted_General_Requirement_Assessment_Protocols.pdf</a>
4	Palaeontology Impact Assessment	<a href="https://screening.environment.gov.za/ScreeningDownloads/AssessmentProtocols/Gazetted_General_Requirement_Assessment_Protocols.pdf">https://screening.environment.gov.za/ScreeningDownloads/AssessmentProtocols/Gazetted_General_Requirement_Assessment_Protocols.pdf</a>
5	Terrestrial Biodiversity Impact Assessment	<a href="https://screening.environment.gov.za/ScreeningDownloads/AssessmentProtocols/Gazetted_Terrestrial_Biodiversity_Assessment_Protocols.pdf">https://screening.environment.gov.za/ScreeningDownloads/AssessmentProtocols/Gazetted_Terrestrial_Biodiversity_Assessment_Protocols.pdf</a>
6	Aquatic Biodiversity Impact Assessment	<a href="https://screening.environment.gov.za/ScreeningDownloads/AssessmentProtocols/Gazetted_Aquatic_Biodiversity_Assessment_Protocols.pdf">https://screening.environment.gov.za/ScreeningDownloads/AssessmentProtocols/Gazetted_Aquatic_Biodiversity_Assessment_Protocols.pdf</a>
7	Avian Impact Assessment	<a href="https://screening.environment.gov.za/ScreeningDownloads/AssessmentProtocols/Gazetted_Avifauna_Assessment_Protocols.pdf">https://screening.environment.gov.za/ScreeningDownloads/AssessmentProtocols/Gazetted_Avifauna_Assessment_Protocols.pdf</a>
8	Civil Aviation Assessment	<a href="https://screening.environment.gov.za/ScreeningDownloads/AssessmentProtocols/Gazetted_Civil_Aviation_Installations_Assessment_Protocols.pdf">https://screening.environment.gov.za/ScreeningDownloads/AssessmentProtocols/Gazetted_Civil_Aviation_Installations_Assessment_Protocols.pdf</a>
9	RFI Assessment	<a href="https://screening.environment.gov.za/ScreeningDownloads/AssessmentProtocols/Gazetted_General_Requirement_Assessment_Protocols.pdf">https://screening.environment.gov.za/ScreeningDownloads/AssessmentProtocols/Gazetted_General_Requirement_Assessment_Protocols.pdf</a>
10	Geotechnical Assessment	<a href="https://screening.environment.gov.za/ScreeningDownloads/AssessmentProtocols/Gazetted_General_Requirement_Assessment_Protocols.pdf">https://screening.environment.gov.za/ScreeningDownloads/AssessmentProtocols/Gazetted_General_Requirement_Assessment_Protocols.pdf</a>
11	Plant Species Assessment	<a href="https://screening.environment.gov.za/ScreeningDownloads/AssessmentProtocols/Gazetted_Plant_Species_Assessment_Protocols.pdf">https://screening.environment.gov.za/ScreeningDownloads/AssessmentProtocols/Gazetted_Plant_Species_Assessment_Protocols.pdf</a>

12	Animal Species Assessment	<a href="https://screening.environment.gov.za/ScreeningDownloads/AssessmentProtocols/Gazetted_Animal_Species_Assessment_Protocols.pdf">https://screening.environment.gov.za/ScreeningDownloads/AssessmentProtocols/Gazetted Animal Species Assessment Protocols.pdf</a>
----	---------------------------	---

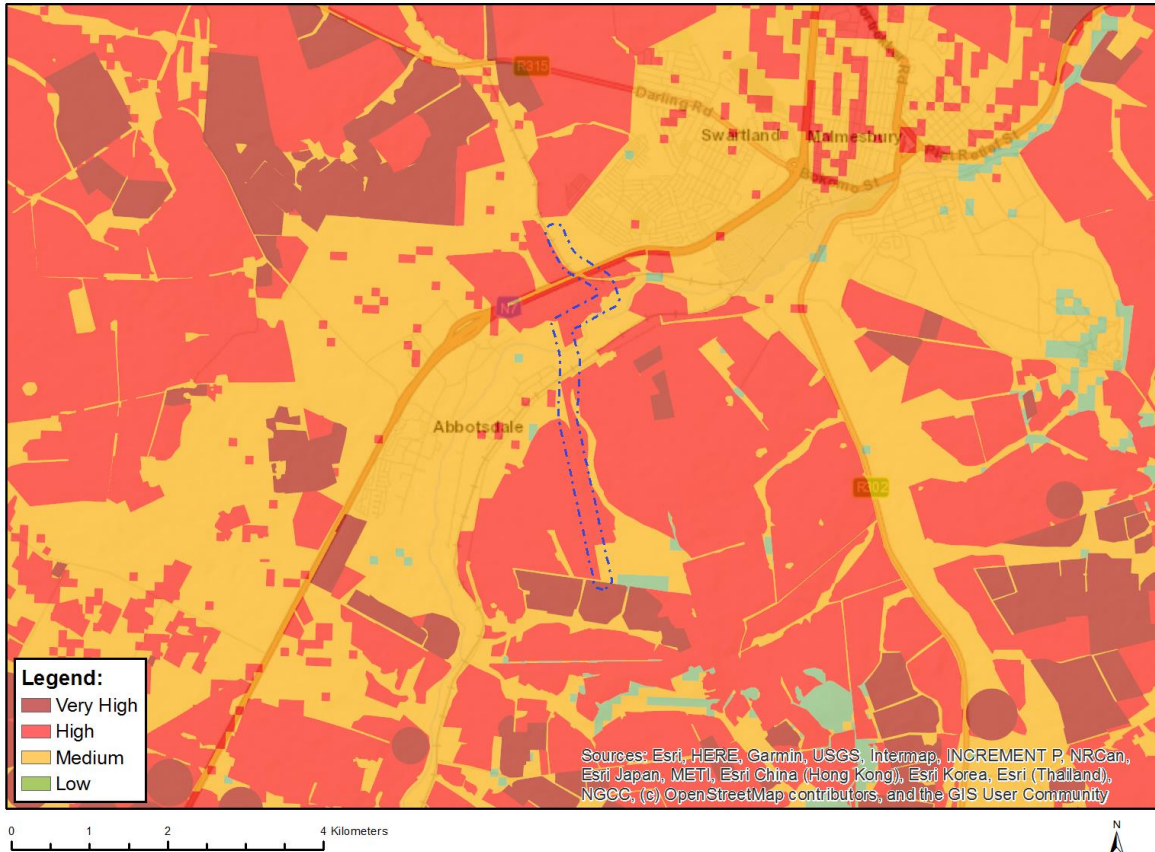
OFFICIAL



## Results of the environmental sensitivity of the proposed area.

The following section represents the results of the screening for environmental sensitivity of the proposed site for relevant environmental themes associated with the project classification. It is the duty of the EAP to ensure that the environmental themes provided by the screening tool are comprehensive and complete for the project. Refer to the disclaimer.

### MAP OF RELATIVE AGRICULTURE THEME SENSITIVITY

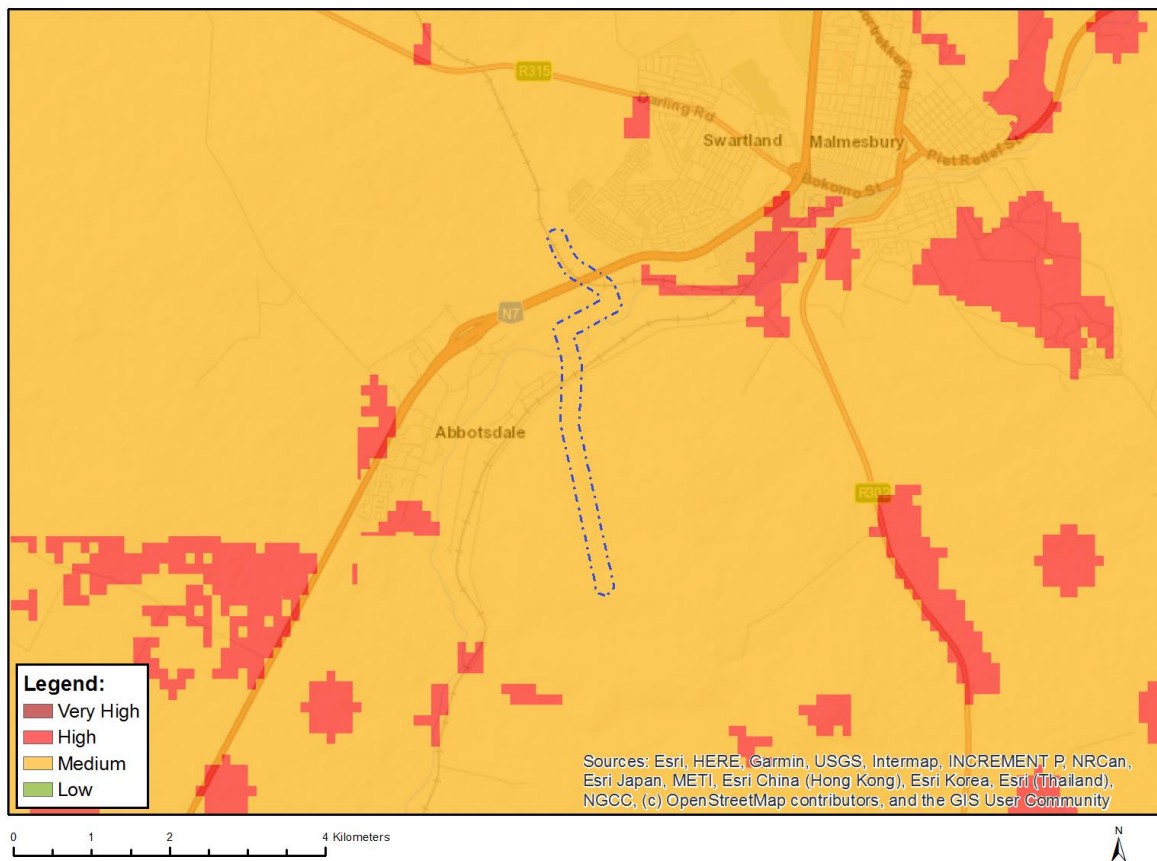


Very High sensitivity	High sensitivity	Medium sensitivity	Low sensitivity
X			

#### Sensitivity Features:

Sensitivity	Feature(s)
High	Annual Crop Cultivation / Planted Pastures Rotation; Land capability; 06. Low-Moderate/07. Low-Moderate/08. Moderate
High	Annual Crop Cultivation / Planted Pastures Rotation; Land capability; 01. Very low/02. Very low/03. Low-Very low/04. Low-Very low/05. Low
Low	Land capability; 01. Very low/02. Very low/03. Low-Very low/04. Low-Very low/05. Low
Medium	Land capability; 06. Low-Moderate/07. Low-Moderate/08. Moderate
Very High	Viticulture; Land capability; 06. Low-Moderate/07. Low-Moderate/08. Moderate

## MAP OF RELATIVE ANIMAL SPECIES THEME SENSITIVITY



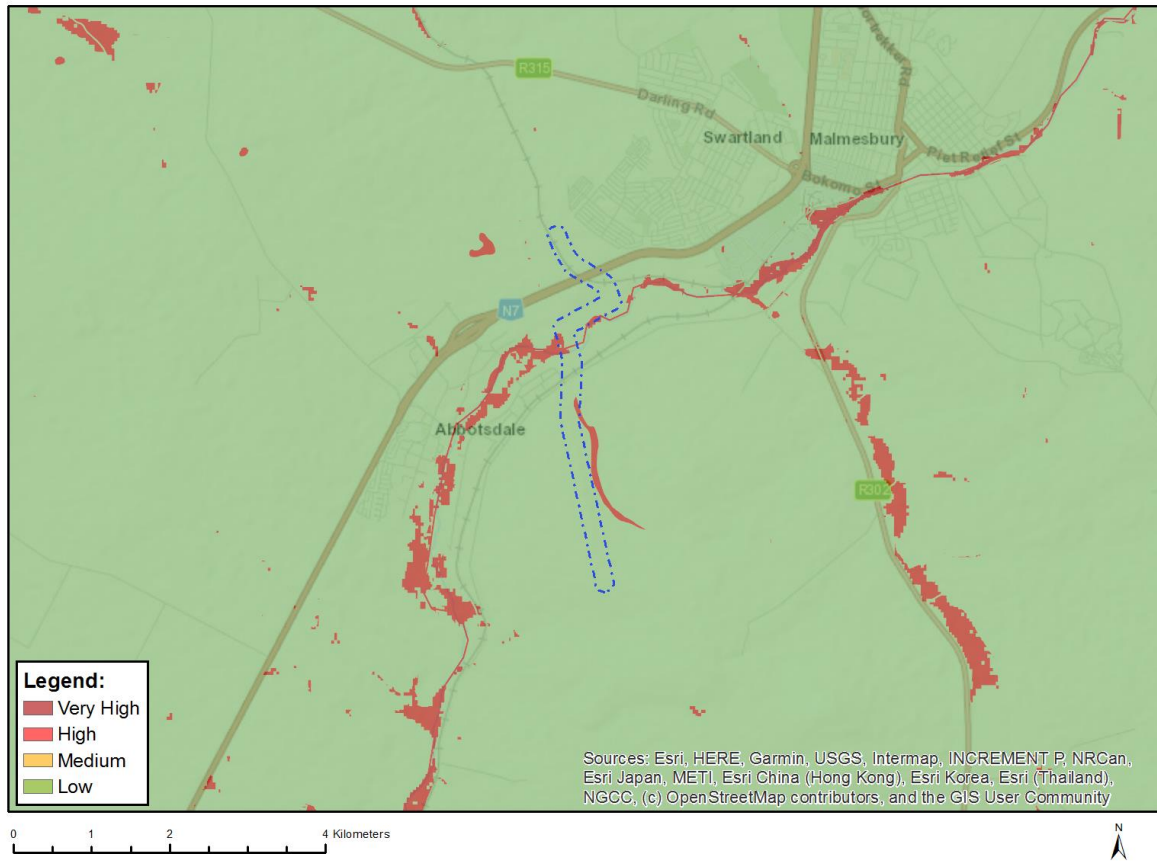
Where only a sensitive plant unique number or sensitive animal unique number is provided in the screening report and an assessment is required, the environmental assessment practitioner (EAP) or specialist is required to email SANBI at [eiadatarequests@sanbi.org.za](mailto:eiadatarequests@sanbi.org.za) listing all sensitive species with their unique identifiers for which information is required. The name has been withheld as the species may be prone to illegal harvesting and must be protected. SANBI will release the actual species name after the details of the EAP or specialist have been documented.

Very High sensitivity	High sensitivity	Medium sensitivity	Low sensitivity
		X	

### Sensitivity Features:

Sensitivity	Feature(s)
Medium	Invertebrate-Pachysoma aesculapius
Medium	Invertebrate-Aneuryphymus montanus

## MAP OF RELATIVE AQUATIC BIODIVERSITY THEME SENSITIVITY

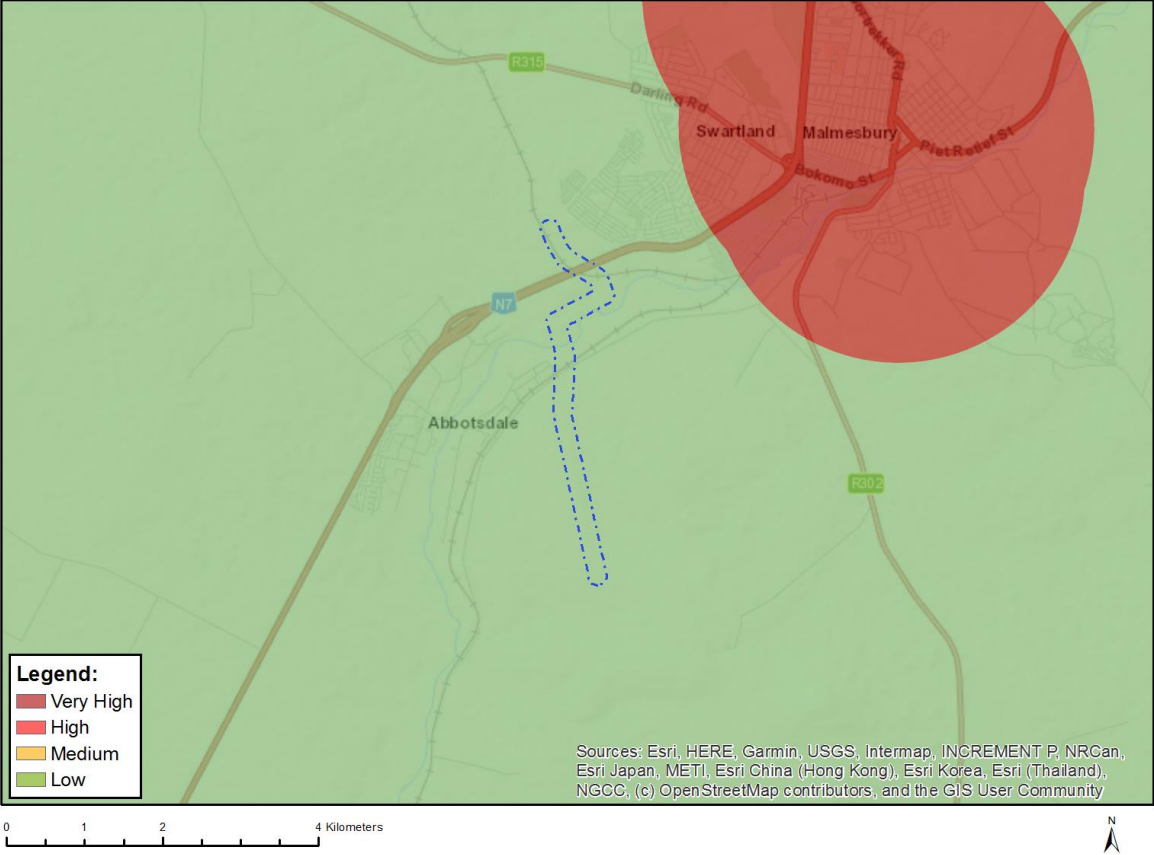


Very High sensitivity	High sensitivity	Medium sensitivity	Low sensitivity
X			

### Sensitivity Features:

Sensitivity	Feature(s)
Low	Low sensitivity
Very High	CBA 1: Aquatic
Very High	ESA 1: Aquatic
Very High	Rivers_C
Very High	Wetlands_West Coast Renosterveld Bioregion (Depression)

# MAP OF RELATIVE ARCHAEOLOGICAL AND CULTURAL HERITAGE THEME SENSITIVITY

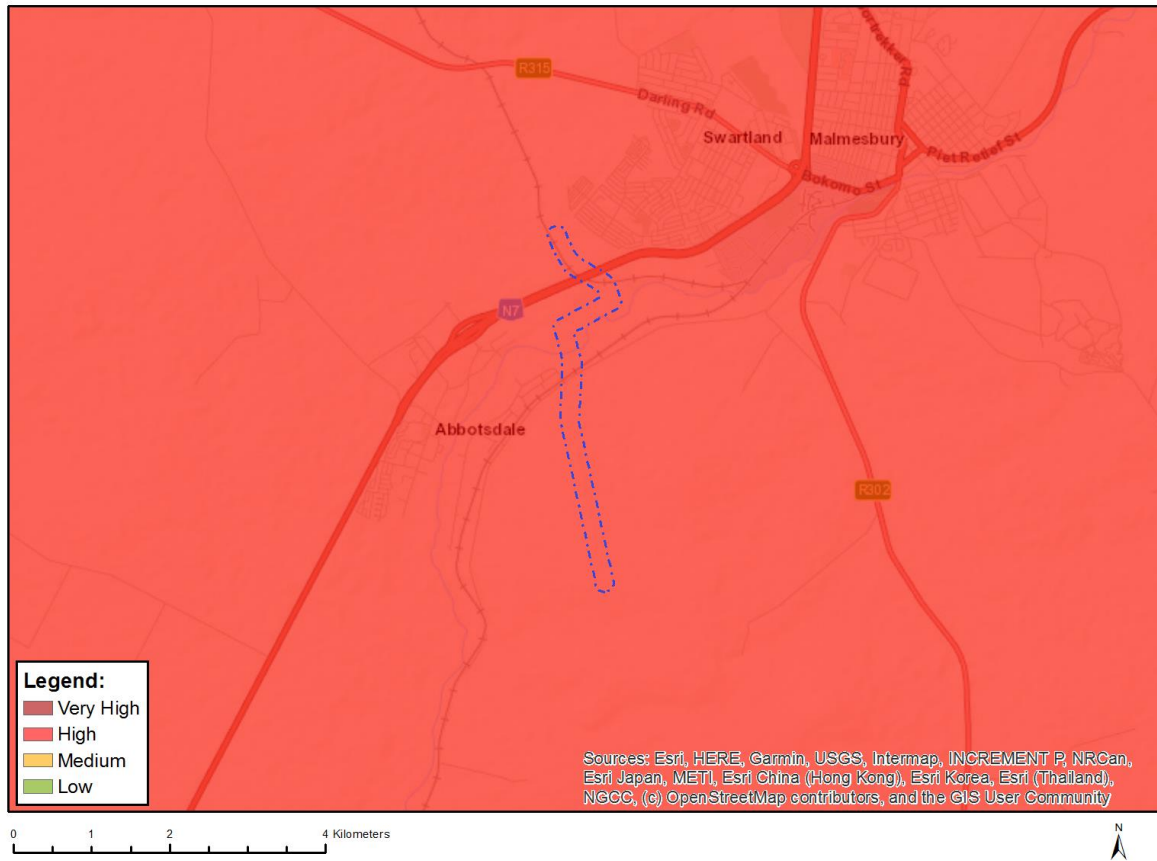


Very High sensitivity	High sensitivity	Medium sensitivity	Low sensitivity
			X

**Sensitivity Features:**

Sensitivity	Feature(s)
Low	Low sensitivity

## MAP OF RELATIVE CIVIL AVIATION THEME SENSITIVITY

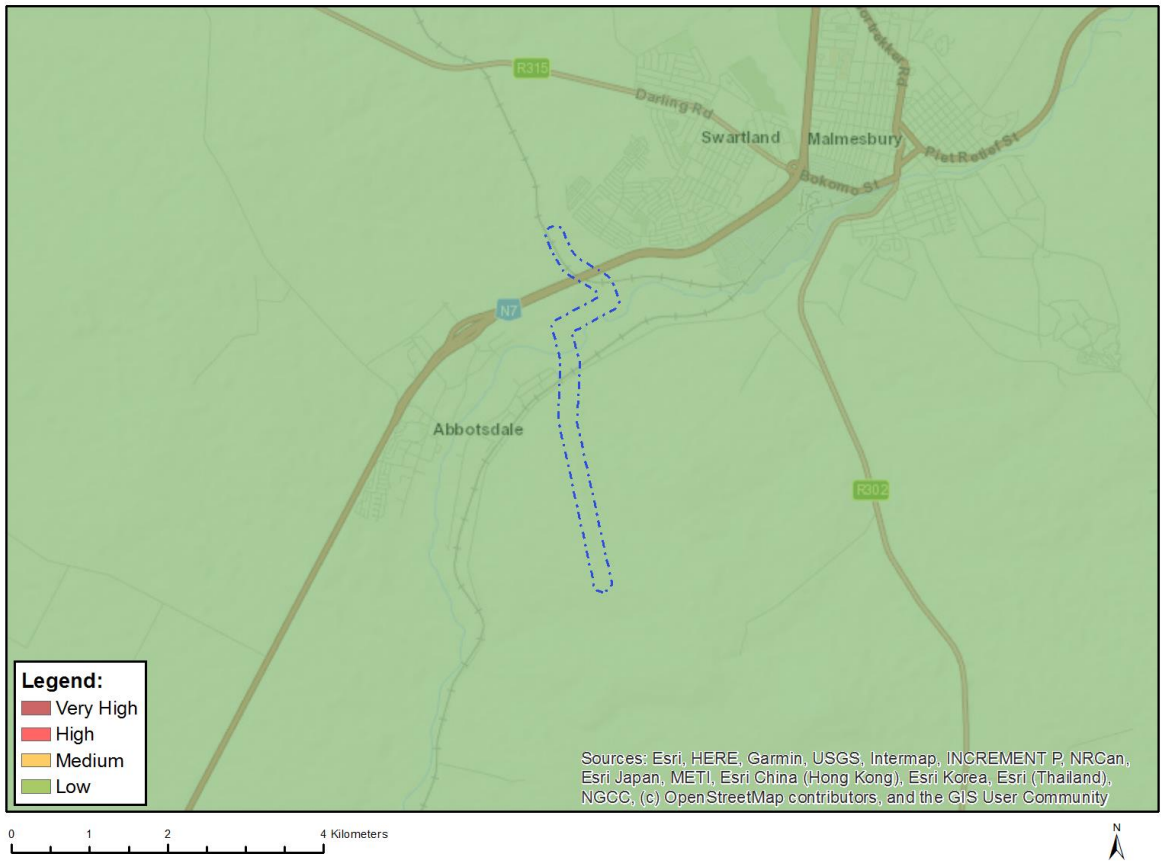


Very High sensitivity	High sensitivity	Medium sensitivity	Low sensitivity
	X		

### Sensitivity Features:

Sensitivity	Feature(s)
High	Within 8 km of other civil aviation aerodrome
High	Dangerous and restricted airspace as demarcated

# MAP OF RELATIVE DEFENCE THEME SENSITIVITY

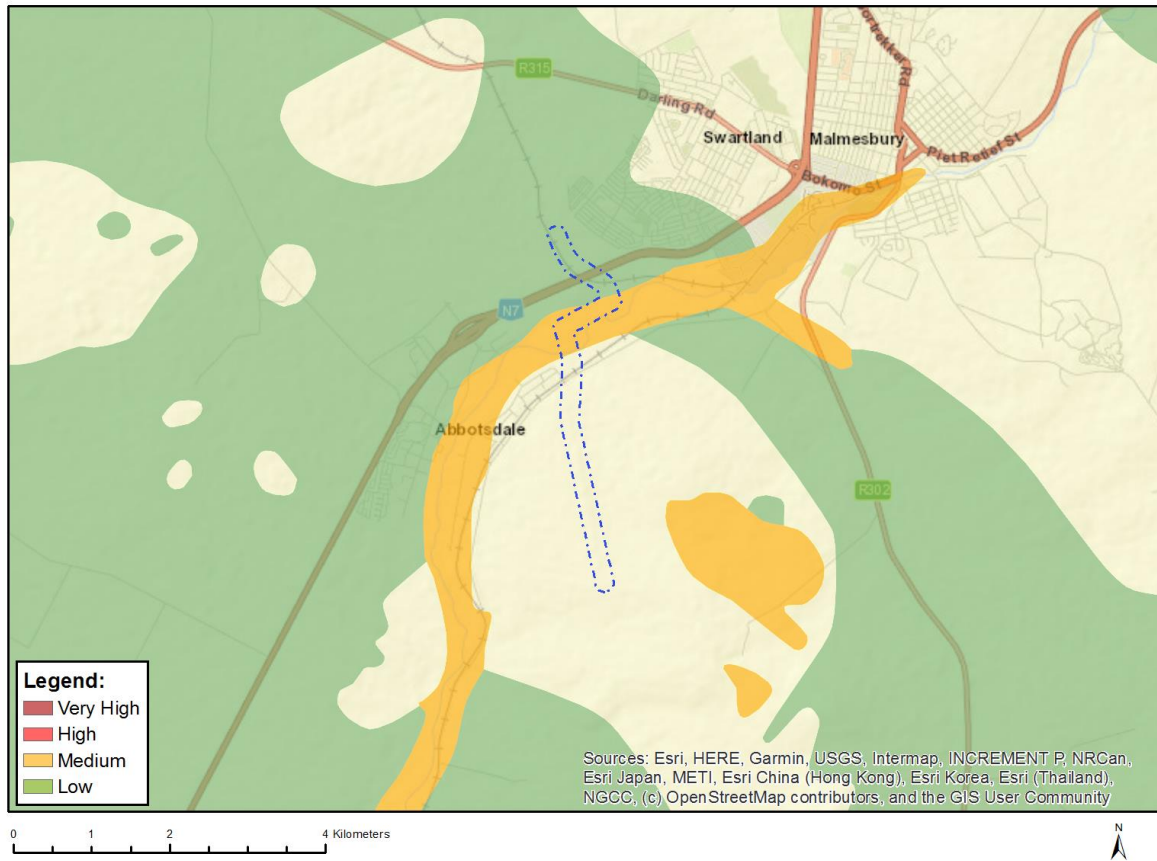


Very High sensitivity	High sensitivity	Medium sensitivity	Low sensitivity
			X

### Sensitivity Features:

Sensitivity	Feature(s)
Low	Low Sensitivity

## MAP OF RELATIVE PALEONTOLOGY THEME SENSITIVITY

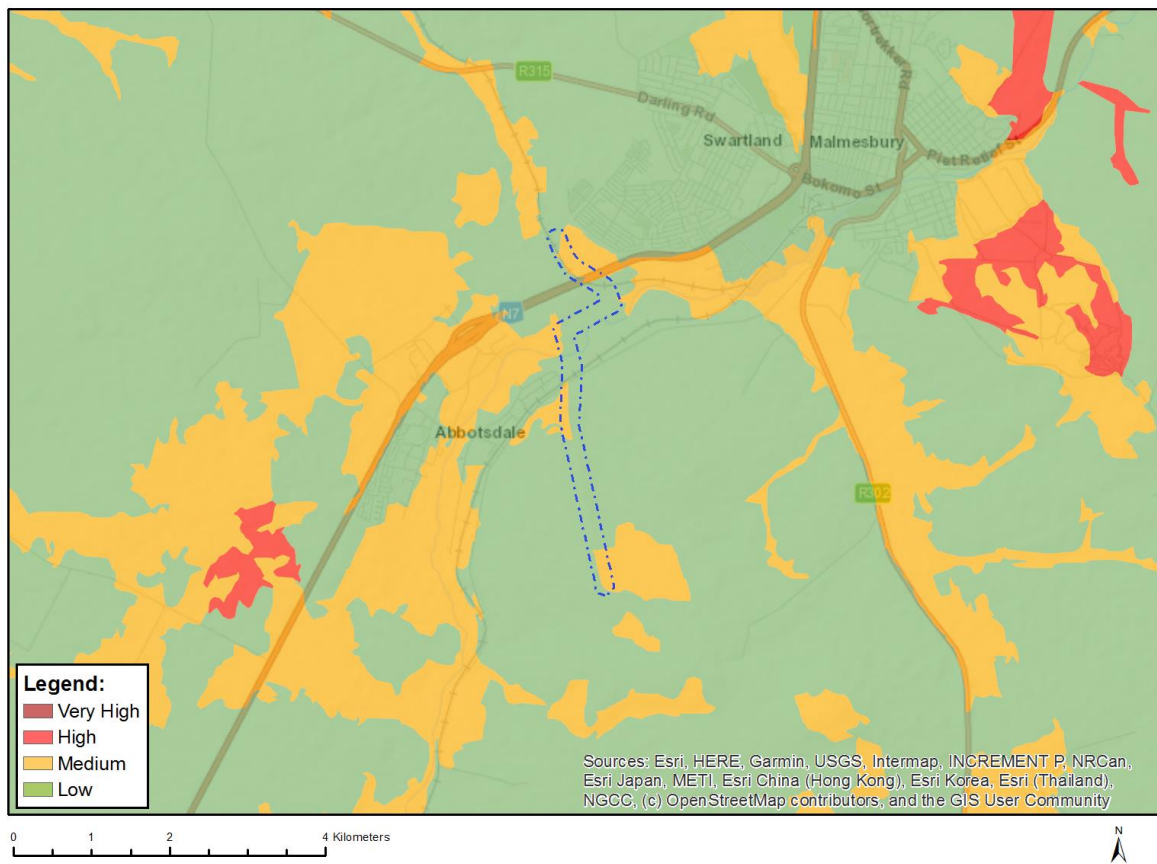


Very High sensitivity	High sensitivity	Medium sensitivity	Low sensitivity
		X	

### Sensitivity Features:

Sensitivity	Feature(s)
Low	Features with a Low paleontological sensitivity
Medium	Features with a Medium paleontological sensitivity

## MAP OF RELATIVE PLANT SPECIES THEME SENSITIVITY



Where only a sensitive plant unique number or sensitive animal unique number is provided in the screening report and an assessment is required, the environmental assessment practitioner (EAP) or specialist is required to email SANBI at [eiadatarequests@sanbi.org.za](mailto:eiadatarequests@sanbi.org.za) listing all sensitive species with their unique identifiers for which information is required. The name has been withheld as the species may be prone to illegal harvesting and must be protected. SANBI will release the actual species name after the details of the EAP or specialist have been documented.

Very High sensitivity	High sensitivity	Medium sensitivity	Low sensitivity
		X	

### Sensitivity Features:

Sensitivity	Feature(s)
Low	Low Sensitivity
Medium	Lampranthus amoenus
Medium	Lampranthus aureus
Medium	Lampranthus dilutus
Medium	Lampranthus filicaulis
Medium	Lampranthus leptaleon
Medium	Lampranthus peacockiae
Medium	Lampranthus scaber
Medium	Lampranthus sociorum
Medium	Lampranthus spiniformis
Medium	Sensitive species 210
Medium	Sensitive species 244
Medium	Antimima mucronata

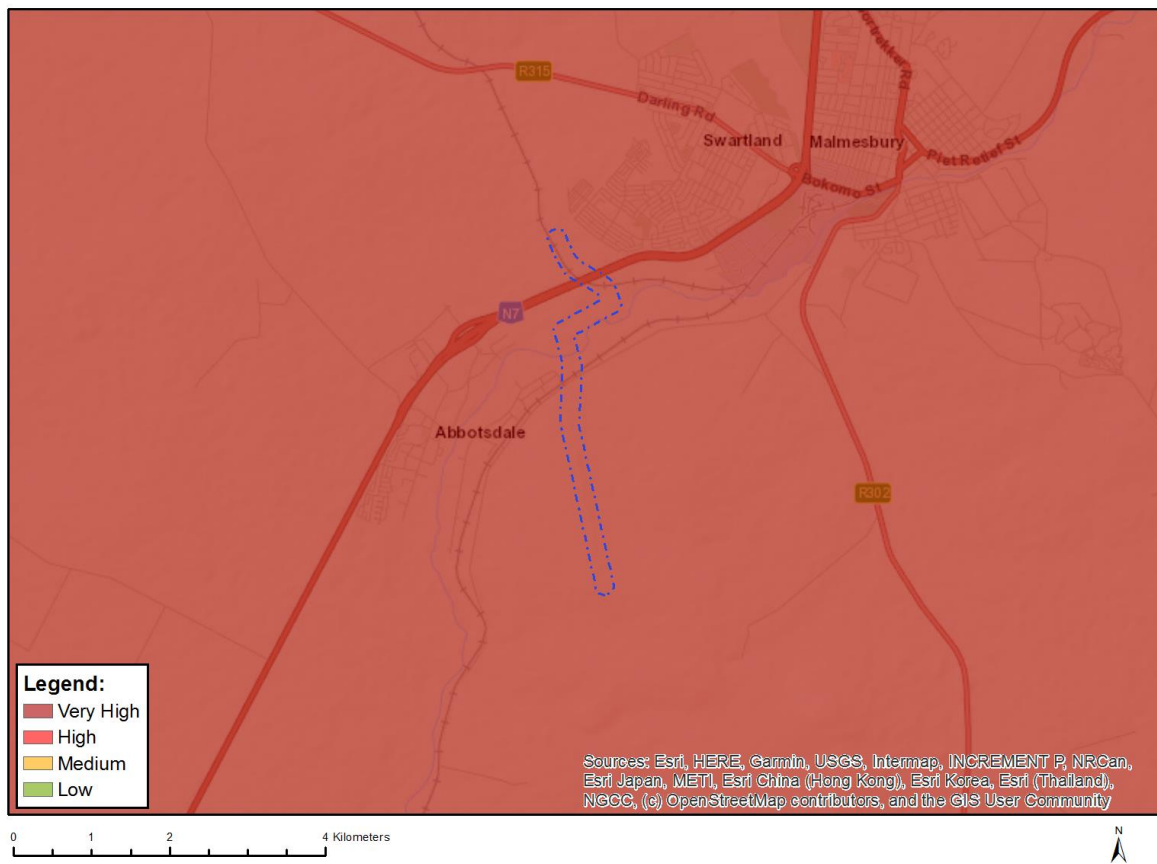


Medium	<i>Antimima aristulata</i>
Medium	<i>Erepsia patula</i>
Medium	<i>Erepsia ramosa</i>
Medium	<i>Cleretum clavatum</i>
Medium	<i>Ruschia diversifolia</i>
Medium	<i>Ruschia geminiflora</i>
Medium	<i>Ruschia schollii</i>
Medium	<i>Drosanthemum hispifolium</i>
Medium	<i>Cephalophyllum parviflorum</i>
Medium	<i>Xiphotheca lanceolata</i>
Medium	<i>Indigofera psoraloides</i>
Medium	<i>Aspalathus acanthophylla</i>
Medium	<i>Aspalathus aculeata</i>
Medium	<i>Aspalathus araneosa</i>
Medium	<i>Aspalathus glabrata</i>
Medium	<i>Aspalathus horizontalis</i>
Medium	<i>Aspalathus lotoides</i> subsp. <i>lotoides</i>
Medium	<i>Aspalathus muraltioides</i>
Medium	<i>Aspalathus puberula</i>
Medium	<i>Aspalathus rycroftii</i>
Medium	<i>Aspalathus stricticlada</i>
Medium	<i>Aspalathus varians</i>
Medium	<i>Aspalathus wurmbeana</i>
Medium	<i>Rafnia lancea</i>
Medium	<i>Rafnia angulata</i> subsp. <i>ericifolia</i>
Medium	<i>Lebeckia plukenetiana</i>
Medium	<i>Podalyria microphylla</i>
Medium	<i>Podalyria sericea</i>
Medium	<i>Lotononis densa</i> subsp. <i>densa</i>
Medium	<i>Leucadendron corymbosum</i>
Medium	<i>Leucadendron lanigerum</i> var. <i>lanigerum</i>
Medium	<i>Leucadendron stellare</i>
Medium	<i>Leucadendron thymifolium</i>
Medium	<i>Leucospermum grandiflorum</i>
Medium	<i>Leucospermum hypophyllocarpodendron</i> subsp. <i>canaliculatum</i>
Medium	<i>Leucospermum hypophyllocarpodendron</i> subsp. <i>hypophyllocarpodendron</i>
Medium	<i>Leucospermum parile</i>
Medium	<i>Leucospermum tomentosum</i>
Medium	<i>Protea burchellii</i>
Medium	<i>Diastella proteoides</i>
Medium	<i>Serruria brownii</i>
Medium	<i>Serruria incrassata</i>
Medium	<i>Serruria linearis</i>
Medium	<i>Serruria roxburghii</i>
Medium	<i>Merciera tetraloba</i>
Medium	<i>Roella arenaria</i>
Medium	<i>Treichelia dodii</i>
Medium	<i>Manulea corymbosa</i>
Medium	<i>Pentameris bachmannii</i>
Medium	<i>Pentameris pholiuroides</i>
Medium	<i>Anthospermum ericifolium</i>
Medium	<i>Lobostemon capitatus</i>
Medium	<i>Echiostachys incanus</i>
Medium	<i>Echiostachys spicatus</i>
Medium	<i>Aristea lugens</i>
Medium	<i>Hesperantha spicata</i> subsp. <i>spicata</i>
Medium	<i>Hesperantha sufflava</i>
Medium	Sensitive species 14
Medium	Sensitive species 267
Medium	Sensitive species 631

Medium	Sensitive species 703
Medium	Sensitive species 919
Medium	Sensitive species 331
Medium	Sensitive species 533
Medium	Sensitive species 1134
Medium	Sensitive species 785
Medium	Sensitive species 878
Medium	Geissorhiza eurystigma
Medium	Geissorhiza furva
Medium	Geissorhiza malmesburiensis
Medium	Geissorhiza monanthos
Medium	Geissorhiza purpurascens
Medium	Geissorhiza radians
Medium	Geissorhiza setacea
Medium	Thereianthus bulbiferus
Medium	Ixia abbreviata
Medium	Ixia curta
Medium	Ixia erubescens
Medium	Ixia fuscocitrina
Medium	Sensitive species 560
Medium	Romulea eximia
Medium	Sensitive species 1047
Medium	Sensitive species 1
Medium	Sensitive species 830
Medium	Sensitive species 1140
Medium	Sensitive species 995
Medium	Sensitive species 1146
Medium	Sensitive species 863
Medium	Pauridia alba
Medium	Pauridia canaliculata
Medium	Pauridia pygmaea
Medium	Oxalis pallens
Medium	Erica malmesburiensis
Medium	Hermannia rugosa
Medium	Sensitive species 222
Medium	Sensitive species 444
Medium	Sensitive species 1240
Medium	Sensitive species 324
Medium	Sensitive species 18
Medium	Sensitive species 259
Medium	Sensitive species 478
Medium	Sensitive species 756
Medium	Tetragonia sphaerocarpa
Medium	Adenogramma rigida
Medium	Wachendorfia brachyandra
Medium	Sensitive species 133
Medium	Trianoptiles solitaria
Medium	Hypodiscus rugosus
Medium	Restio duthieae
Medium	Restio papillosus
Medium	Anisodonteia biflora
Medium	Sensitive species 985
Medium	Sensitive species 120
Medium	Sensitive species 266
Medium	Pterygodium cruciferum
Medium	Pterygodium inversum
Medium	Gnidia spicata
Medium	Metalasia capitata
Medium	Metalasia octoflora
Medium	Senecio cadiscus

Medium	<i>Athanasia crenata</i>
Medium	<i>Athanasia rugulosa</i>
Medium	Sensitive species 1042
Medium	<i>Arctotheca forbesiana</i>
Medium	<i>Agathosma corymbosa</i>
Medium	<i>Agathosma glandulosa</i>
Medium	<i>Agathosma latipetala</i>
Medium	<i>Macrostylis villosa</i> subsp. <i>villosa</i>
Medium	<i>Cliffortia acockii</i>
Medium	<i>Cliffortia hirta</i>
Medium	<i>Limonium purpuratum</i>
Medium	<i>Muraltia decipiens</i>
Medium	<i>Muraltia macropetala</i>
Medium	Sensitive species 1218
Medium	Sensitive species 1135
Medium	Sensitive species 382
Medium	Sensitive species 782
Medium	Sensitive species 158
Medium	Sensitive species 723
Medium	Sensitive species 616
Medium	<i>Wurmbea capensis</i>
Medium	<i>Wurmbea inusta</i>
Medium	<i>Phylica stenopetala</i> var. <i>stenopetala</i>
Medium	<i>Phylica strigulosa</i>
Medium	<i>Phylica thunbergiana</i>
Medium	<i>Ezoloba macrocarpa</i>
Medium	<i>Codonrhiza azurea</i>
Medium	<i>Lampranthus debilis</i>
Medium	<i>Lampranthus glaucus</i>
Medium	<i>Drosanthemum striatum</i>
Medium	<i>Xiphotheca reflexa</i>
Medium	<i>Psoralea alata</i>
Medium	<i>Aspalathus recurva</i>
Medium	<i>Aponogeton fugax</i>
Medium	<i>Leucospermum rodolentum</i>
Medium	Sensitive species 593
Medium	Sensitive species 335
Medium	Sensitive species 599
Medium	<i>Elegia squamosa</i>
Medium	<i>Restio paludosus</i>
Medium	<i>Restio rigoratus</i>
Medium	<i>Lachnaea grandiflora</i>
Medium	<i>Cotula pusilla</i>
Medium	<i>Perdicium capense</i>
Medium	Sensitive species 1225

# MAP OF RELATIVE TERRESTRIAL BIODIVERSITY THEME SENSITIVITY



Very High sensitivity	High sensitivity	Medium sensitivity	Low sensitivity
X			

### Sensitivity Features:

Sensitivity	Feature(s)
Very High	ESA 2: Restore from other land use
Very High	CBA 1: Terrestrial
Very High	VU_Swartland Alluvium Renosterveld
Very High	EN_Swartland Granite Renosterveld
Very High	CR_Swartland Shale Renosterveld