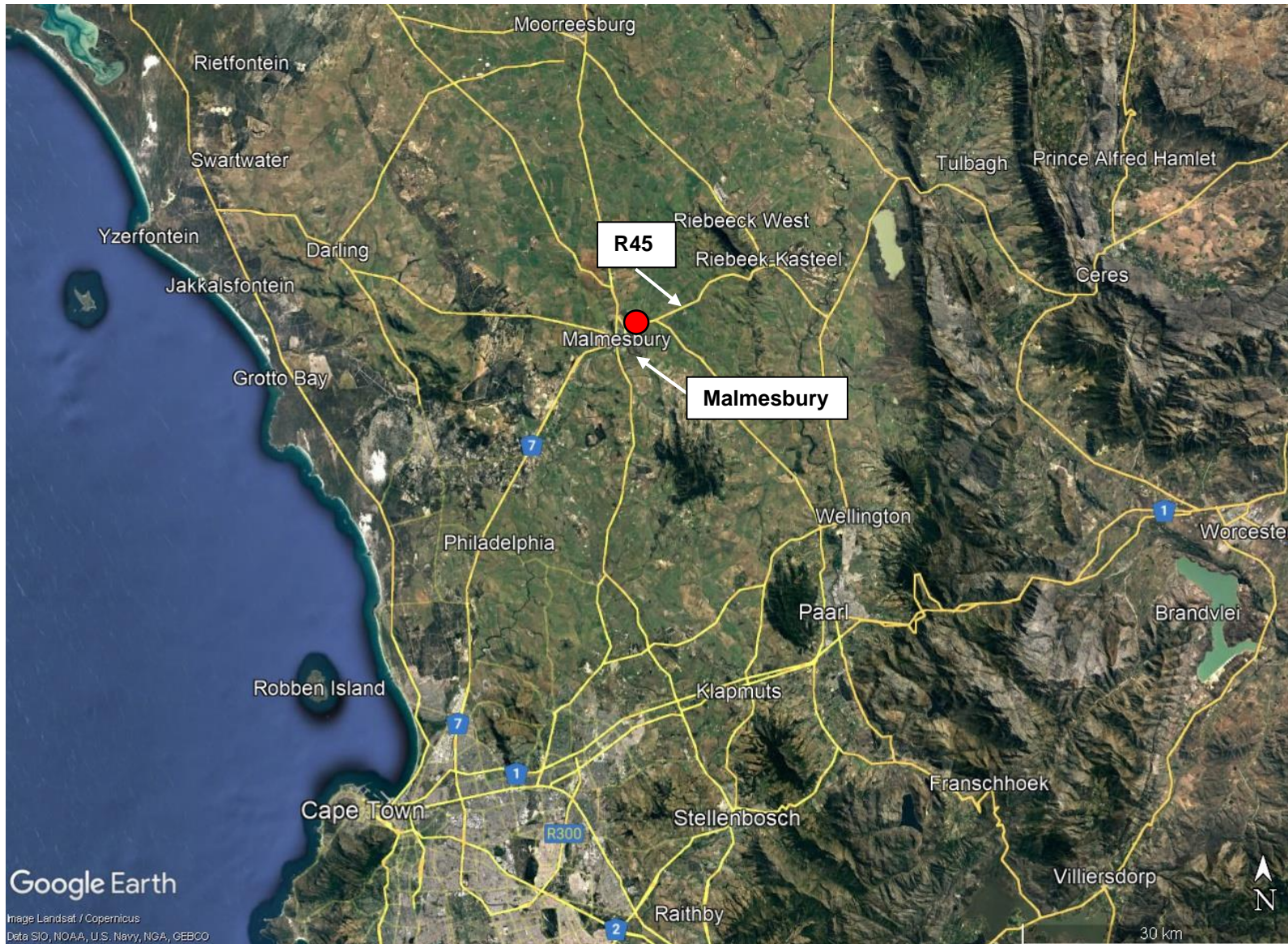


# PROPOSED SOLAR PV FACILITY ON PORTION OF ERF 327, MALMESBURY, WESTERN CAPE



**SITE CO-ORDINATES  
(Approximate Centre Point)**

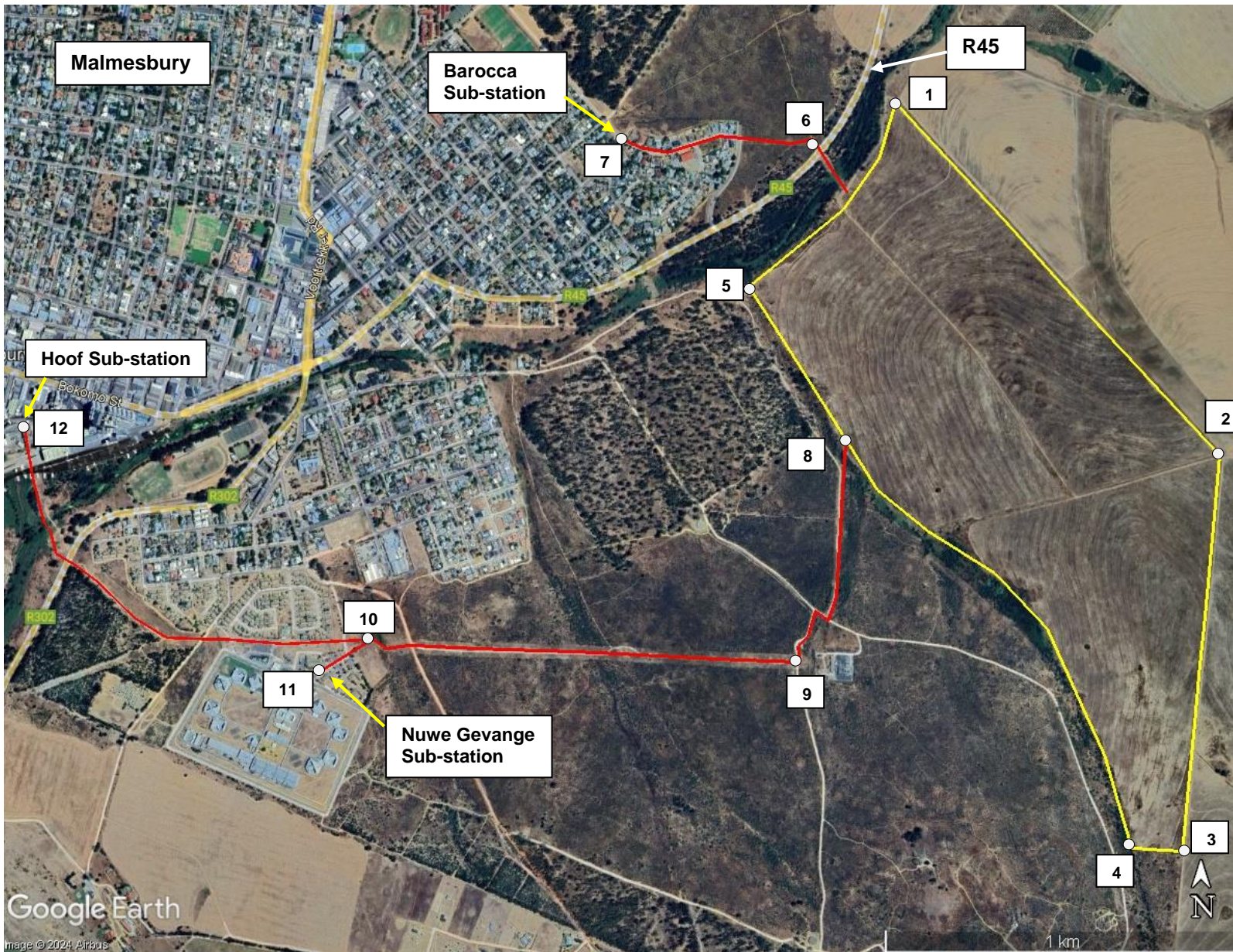
33° 28' 01.40" S,  
18° 45' 07.70" E.

 **Proposed Site**

June 2024



# PROPOSED SOLAR PV FACILITY ON PORTION OF ERF 327, MALMESBURY, WESTERN CAPE



## POINT SITE CO-ORDINATES

1	33° 27' 31.15" S, 18° 44' 52.69" E.
2	33° 28' 05.38" S, 18° 45' 28.04" E.
3	33° 28' 42.08" S, 18° 45' 22.72" E.
4	33° 28' 41.99" S, 18° 45' 17.34" E.
5	33° 27' 49.07" S, 18° 44' 35.53" E.
6	33° 27' 34.73" S, 18° 44' 43.06" E.
7	33° 27' 35.11" S, 18° 44' 21.17" E.
8	33° 28' 04.26" S, 18° 44' 46.60" E.
9	33° 28' 25.03" S, 18° 44' 40.83" E.
10	33° 28' 22.98" S, 18° 43' 52.33" E.
11	33° 28' 26.03" S, 18° 43' 46.77" E.
12	33° 28' 02.81" S, 18° 43' 11.97" E.

 **Proposed Solar Array Site**

 **Proposed Cable route**



Environmental Impact Assessment | Environmental Record