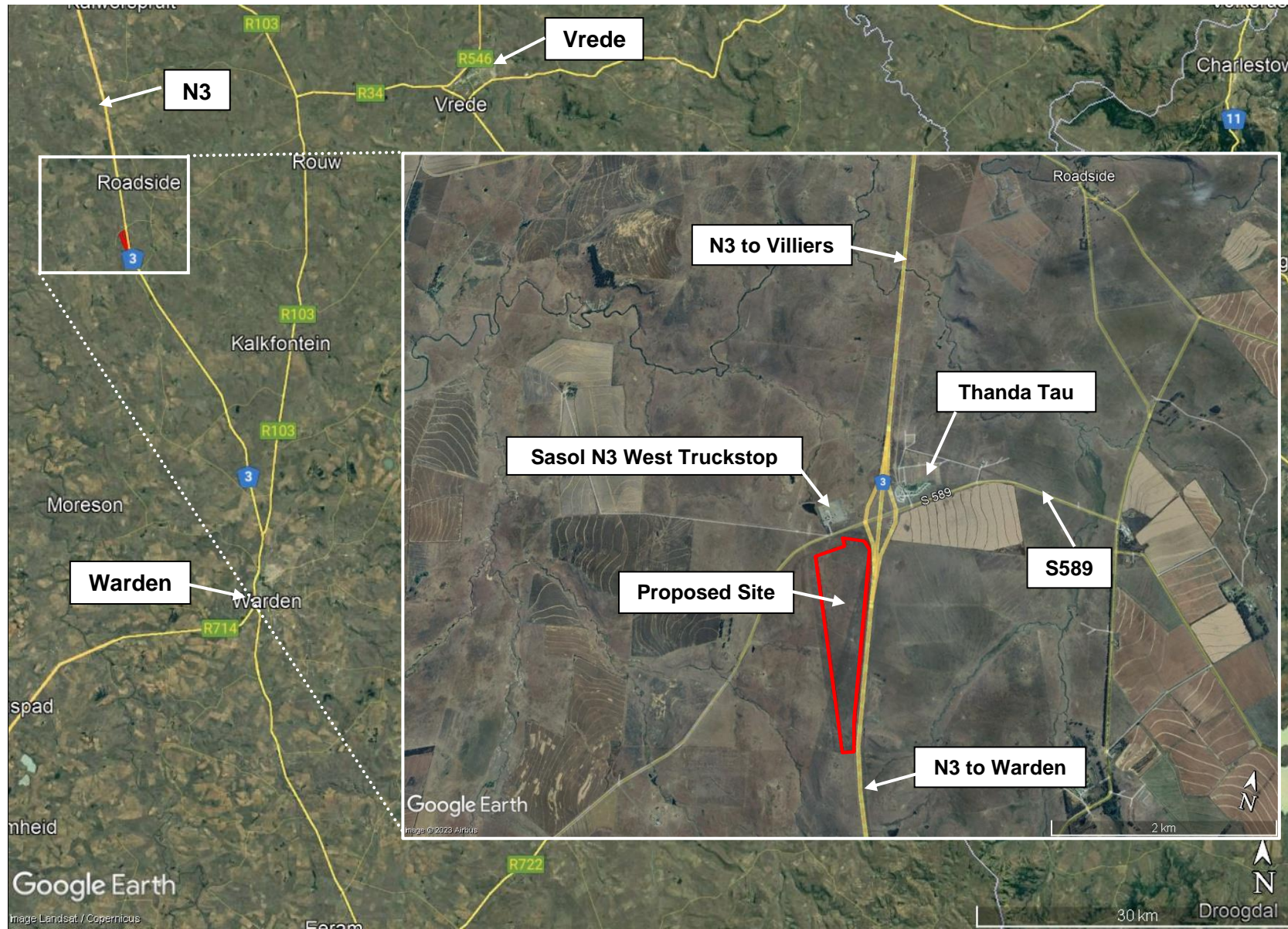


THE PROPOSED KOHLER SOLAR PHOTOVOLTAIC RENEWABLE ENERGY GENERATION PLANT AND ELECTRIC TRUCK CHARGING FACILITY, OFF THE N3 HIGHWAY, NEAR VREDE, FREE STATE PROVINCE



SITE CO-ORDINATES
S27°33'50.8"
E28°50'16.80"

 **Proposed Site**

N3 Electric Highway Co.
EnviroAfrica cc

REF: T-N003-03

Nov 2024

