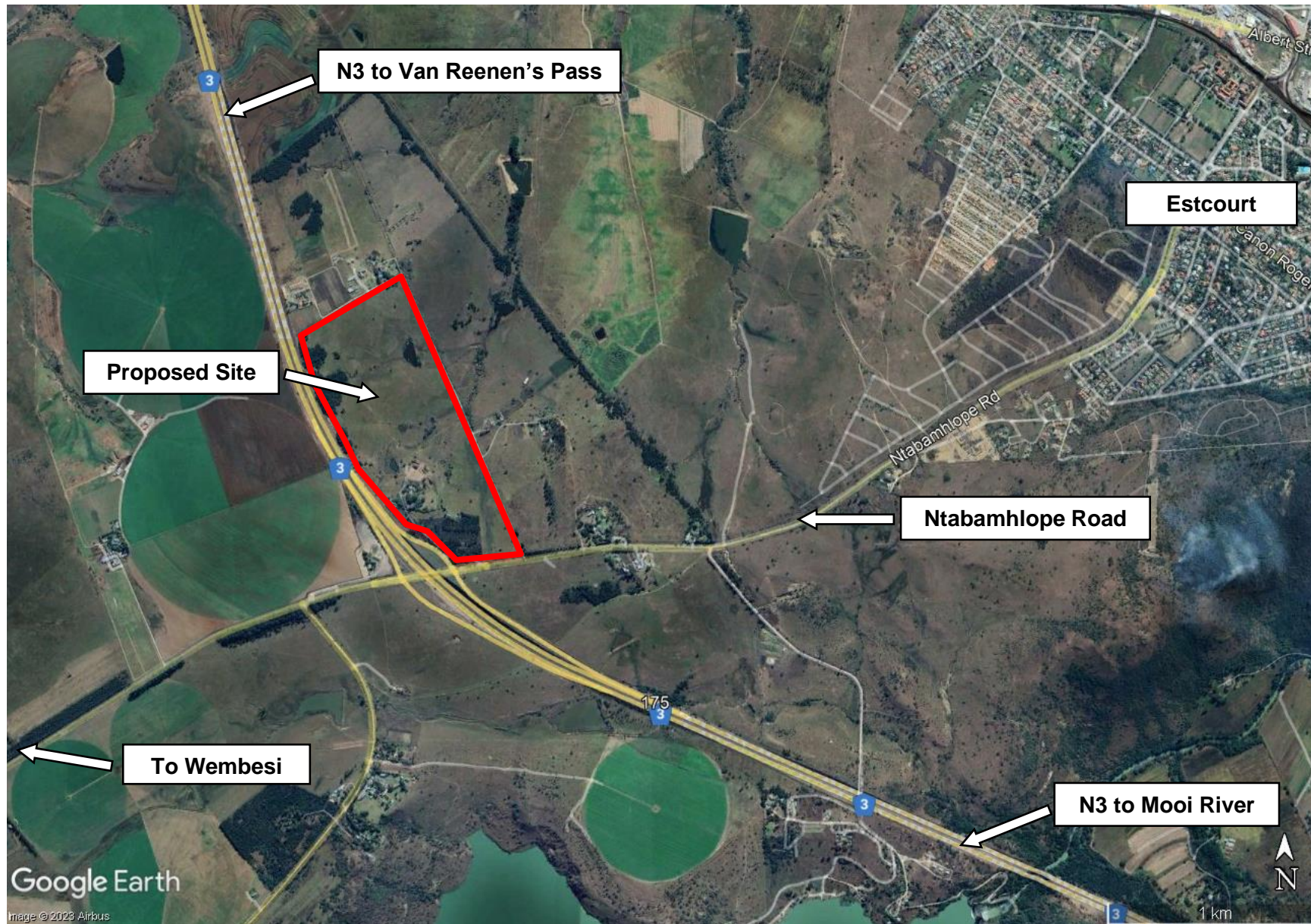


THE PROPOSED ESTCOURT SOLAR PHOTOVOLTAIC RENEWABLE ENERGY GENERATION PLANT AND ELECTRIC TRUCK CHARGING FACILITY, OFF THE N3 HIGHWAY, NEAR ESTCOURT, KWAZULU-NATAL



SITE CO-ORDINATES
29°01'17.80"S
29°49'33.80"E

 **Proposed Site**

N3 Electric Highway Co.
EnviroAfrica cc
REF: T-N003-02
Nov 2024

