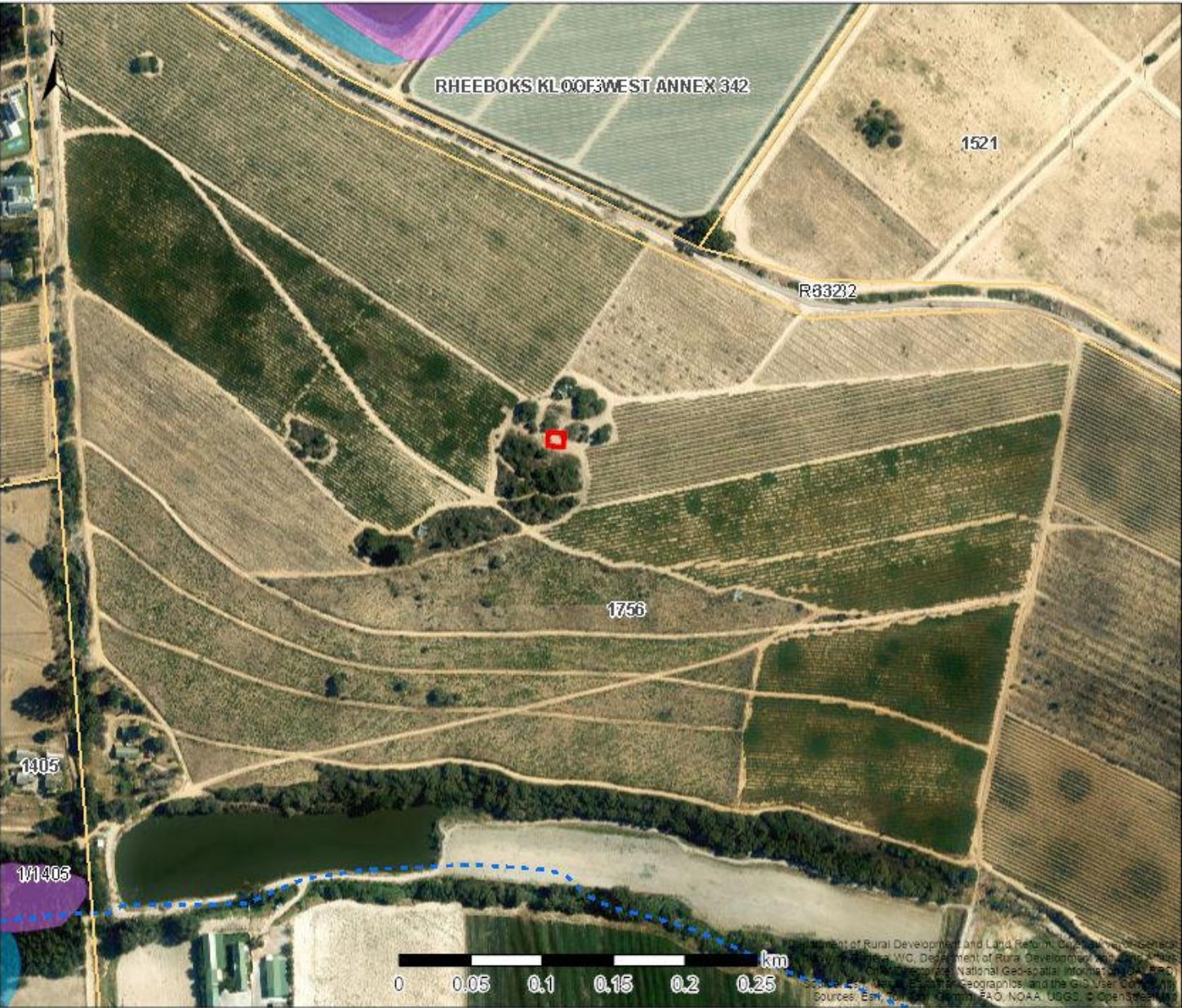


Diemersfontein Mast - Freshwater

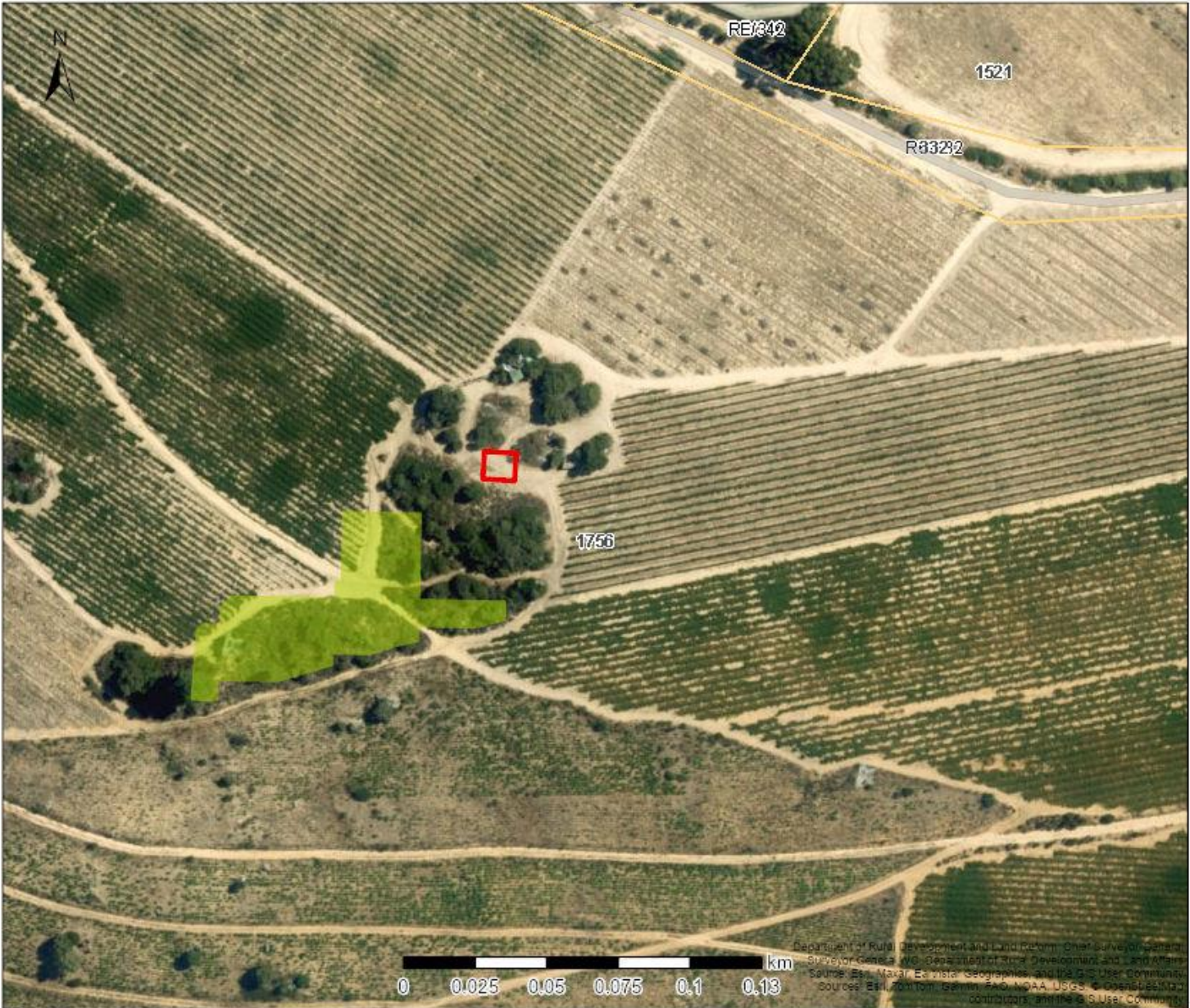


- Legend**
- Parent Farms
 - Farm Portions
- Rivers**
- Non-Perennial
- Wetlands (NFEPA)**
- Artificial
 - Natural

Map Center: Lon: 19°1'18.1"E
 Lat: 33°40'12.8"S
 Scale: 1:4,514
 Date created: 2024/29/10

Department of Rural Development and Land Reform, Geographical Information Systems, Western Cape, Department of Rural Development and Land Reform, Geographical Information Systems, National Geospatial Information, FAO, Sources: Earthstar Geographics, and the GIS User Community. Sources: Earthstar Geographics, FAO, NOAA, USGS, © OpenStreetMap

Diemersfontein Mast - Critical Biodiversity Areas



- Legend**
- Parent Farms
 - Farm Portions
 - BSP CBA**
 - CBA: Terrestrial

Map Center: Lon: 19°1'18.5"E
Lat: 33°40'11.8"S

Scale: 1:2,257

Date created: 2024/29/10



Department of Rural Development and Land Reform, Chief Surveyor General
St. George's, W.C. Bureau of Rural Development and Land Affairs
Source: Esri, Maxar, Earthstar Geographics, and the GIS User Community
Sources: Esri, DeLorme, Garmin, FAO, NOAA, USGS, © OpenStreetMap contributors, and the GIS User Community

Diemersfontein Mast - Vegetation



- Legend**
- Parent Farms
 - Farm Portions
 - VEGMAP 2018**
 - FRg 2 Swarland Granite Renosterveld

Map Center: Lon: 19°1'18.2"E
Lat: 33°40'12.1"S
Scale: 1:2,257
Date created: 2024/29/10



Department of Rural Development and Land Reform, Chief Surveyor-General, Surveyor General W.G. Department of Rural Development and Land Affairs
Source: Esri, Maxar, Earthstar Geographics, and the GIS User Community
Sources: Esri, TomTom, Garmin, FAO, NOAA, USGS, © OpenStreetMap contributors, and the GIS User Community