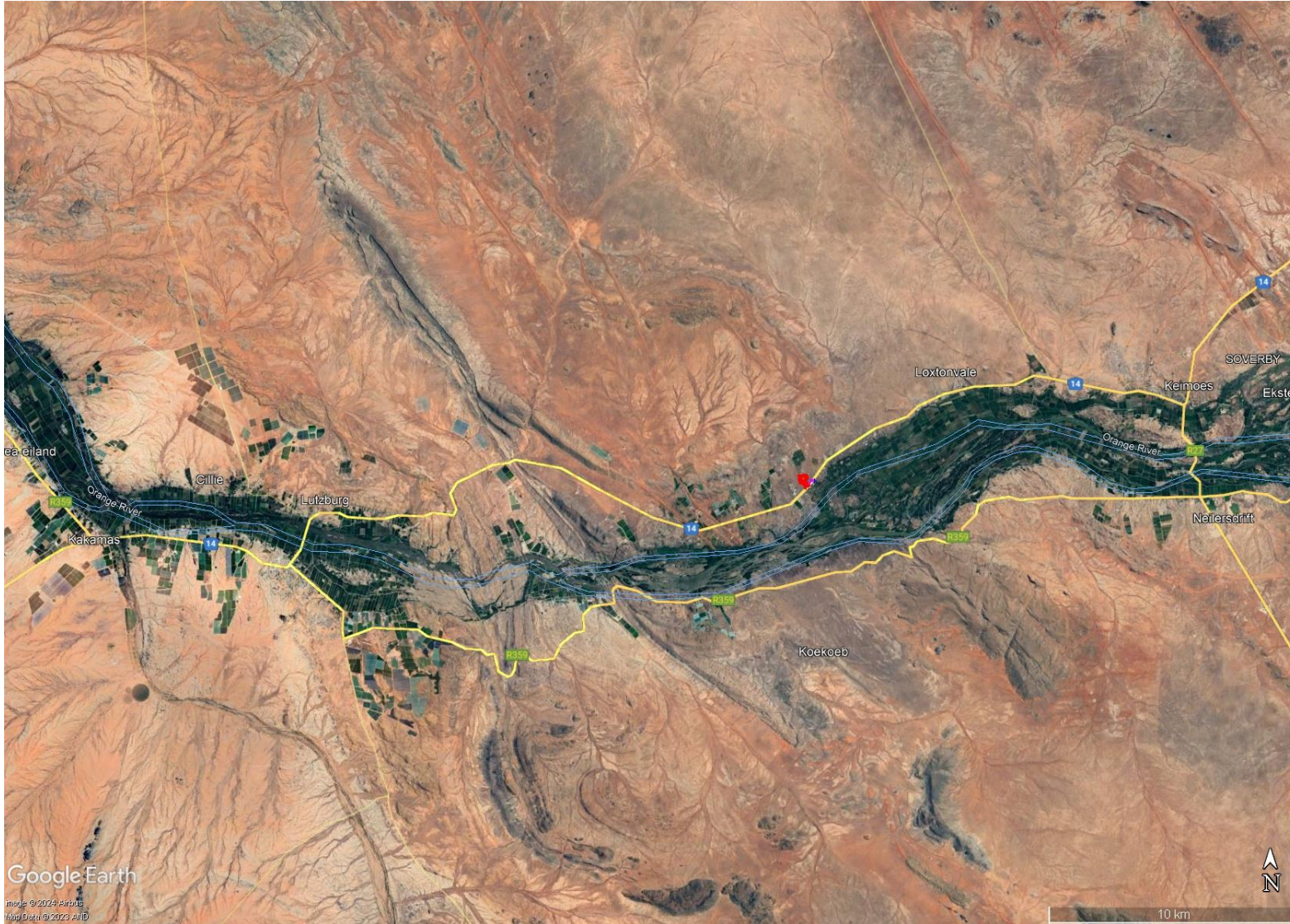


THE PROPOSED ESTABLISHMENT OF AN ELECTRIC VEHICLE CHARGING FACILITY, SOLAR PV PLANT AND ASSOCIATED INFRASTRUCTURE AT AKKERBOOM FARM STALL (PORTIONS 19 & 47 OF FARM FRIER'S DALE, NO. 466) ALONG THE N14, BETWEEN KAKAMAS AND KEIMOES, NORTHERN CAPE



SITE COORDINATES:
28°44'25.53"S
20°49'35.47"E

 **The Site**

December 2024



THE PROPOSED ESTABLISHMENT OF AN ELECTRIC VEHICLE CHARGING FACILITY, SOLAR PV PLANT AND ASSOCIATED INFRASTRUCTURE AT AKKERBOOM FARM STALL (PORTIONS 19 & 47 OF FARM FRIER'S DALE, NO. 466) ALONG THE N14, BETWEEN KAKAMAS AND KEIMOES, NORTHERN CAPE







SITE COORDINATES:

28°44'25.53"S

20°49'35.47"E

LEGEND:

-  Preferred Alternative – Solar panels
-  Alternative – Solar panels
-  Electric Vehicle Charging Station
-  Underground Transmission cable

December 2024

