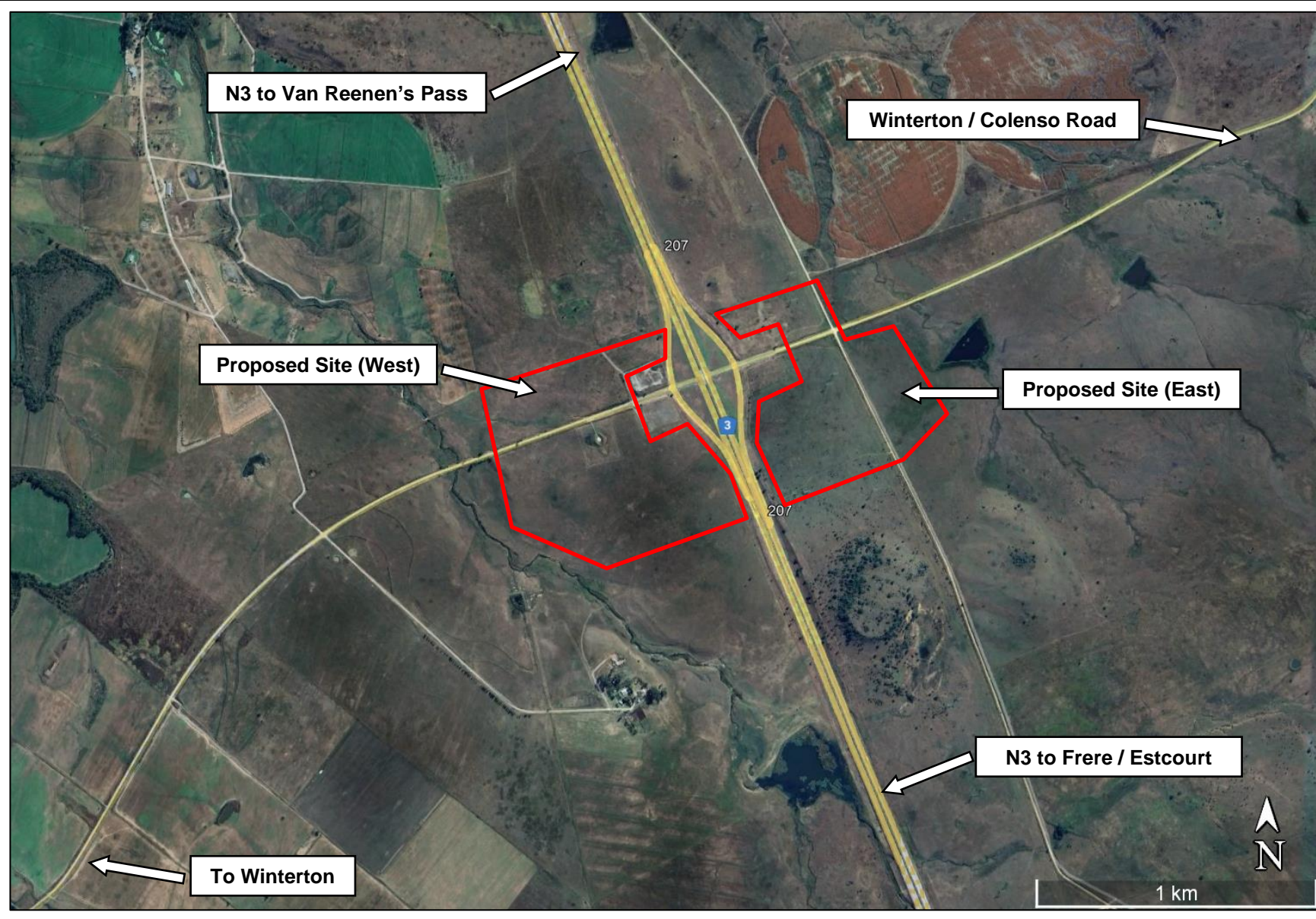


THE PROPOSED KOPLEEGTE SOLAR PHOTOVOLTAIC RENEWABLE ENERGY GENERATION PLANT AND ELECTRIC TRUCK CHARGING FACILITY ON PORTION 11 OF THE FARM KOP LEEGTE NO. 1154 GS, OFF THE N3 HIGHWAY, NEAR WINTERTON, KWA-ZULU NATAL PROVINCE



SITE CO-ORDINATES
28°46'52.17"S
29°40'26.68"E

 **Proposed Site**

N3 Electric Highway Co.
EnviroAfrica cc
REF: T-N003-01
Sep / Oct 2024

