

PROPOSED VISITORS' SCIENCE CENTRE ON ERF 431 (A PORTION OF ERF 353), CARNARVON



SITE CORNER COORDINATES:

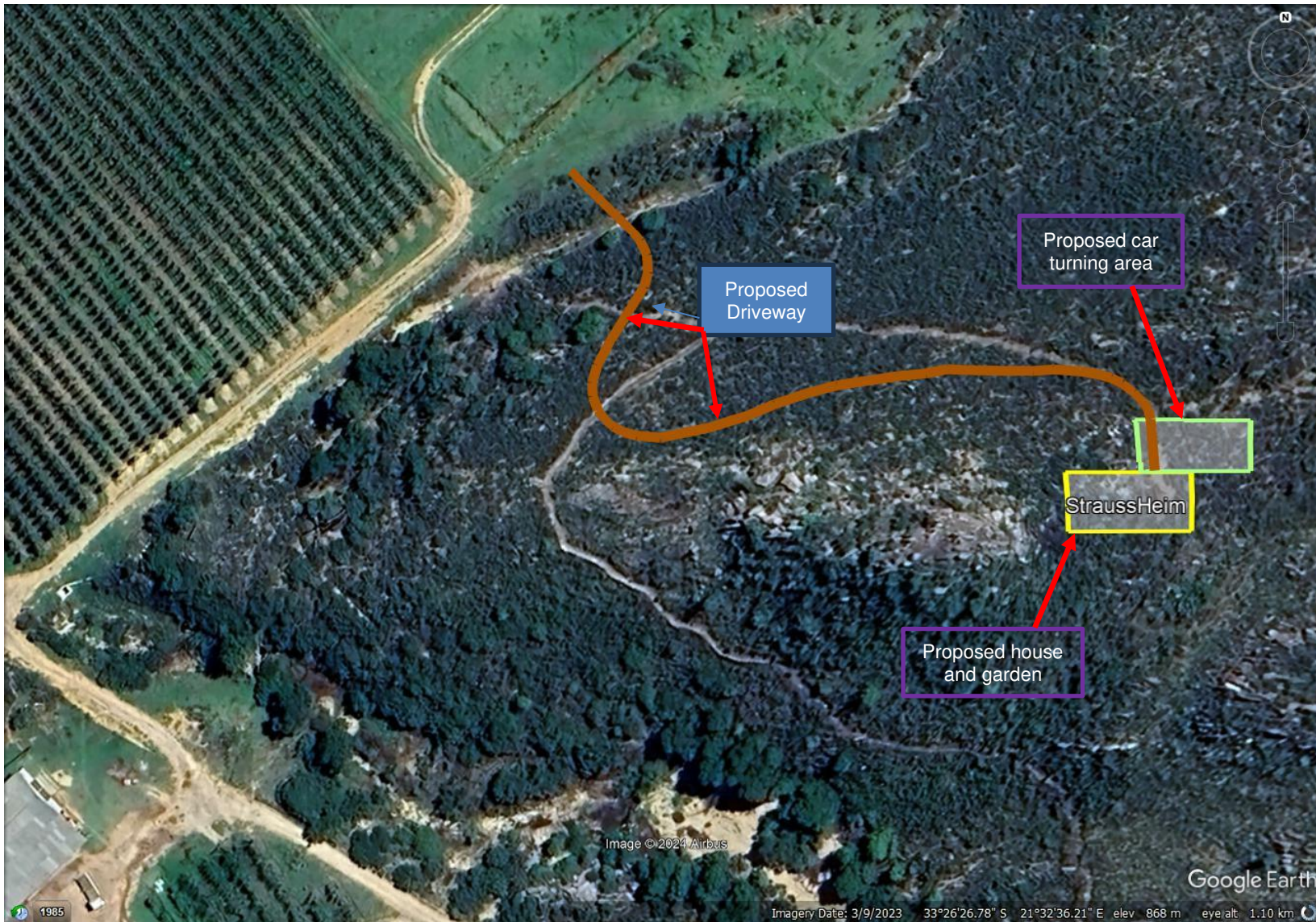
(30° 58' 04.21\"S, 22° 07' 20.25\"E)
(30° 57' 57.58\"S, 22° 07' 22.15\"E)
(30° 57' 58.68\"S, 22° 07' 29.99\"E)
(30° 53' 04.73\"S, 22° 07' 28.89\"E)

 Proposed site

October 2024



PROPOSED DRIVEWAY AND HILLTOP HOUSE WITH ASSOCIATED GARDEN, CARPORT, CAR TURNING AREA ON THE FARM VARTWELL NO. 69, LADISMITH



SITE COORDINATES:

HOUSE

(33 ° 26' 27.05"S, 21 ° 32' 39.77"E)

DRIVEWAY

(33 ° 26' 24.78"S, 21 ° 32' 32.35"E)

(33 ° 26' 25.34"S, 21 ° 32' 32.36"E)

(33 ° 26' 26.49"S, 21 ° 32' 35.71"E)

(33 ° 26' 26.25"S, 21 ° 32' 39.79"E)

May 2024

