

**SCREENING REPORT FOR AN ENVIRONMENTAL AUTHORIZATION AS
REQUIRED BY THE 2014 EIA REGULATIONS – PROPOSED SITE
ENVIRONMENTAL SENSITIVITY**

EIA Reference number:

Project name: KTE Pipeline Development/Expansion

Project title: KTE Pipeline Development/Expansion

Date screening report generated: 14/11/2024 16:42:14

Applicant: KTE

Compiler: EnviroAfrica

Compiler signature:
.....

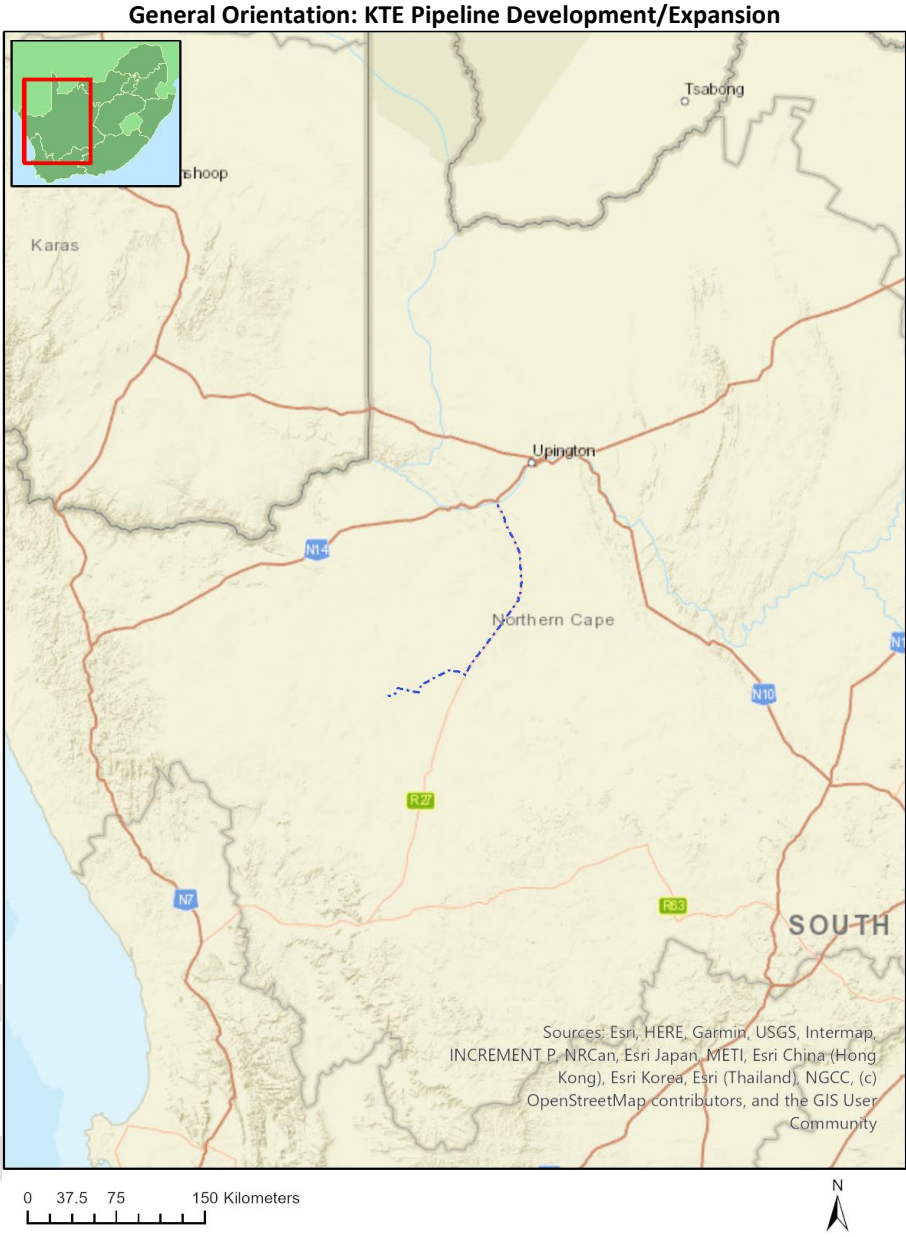
Application Category: Utilities Infrastructure|Pipelines|Water|Fresh_Storm Water

Table of Contents

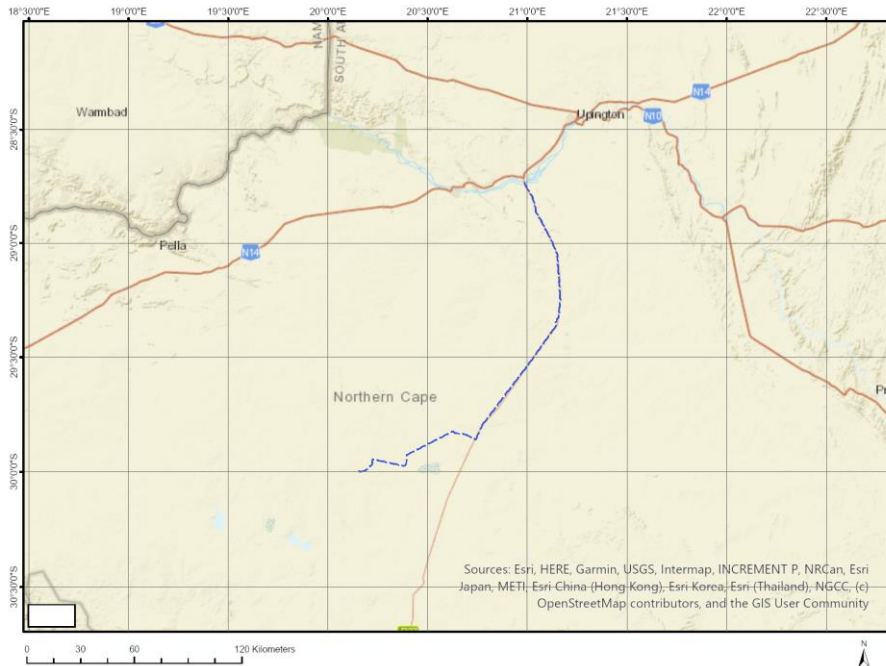
- Proposed Project Location 3
 - Orientation map 1: General location 3
- Map of proposed site and relevant area(s) 4
 - Cadastral details of the proposed site 4
 - Wind and Solar developments with an approved Environmental Authorisation or applications under consideration within 30 km of the proposed area 13
 - Environmental Management Frameworks relevant to the application 16
- Environmental screening results and assessment outcomes 16
 - Relevant development incentives, restrictions, exclusions or prohibitions 16
 - Proposed Development Area Environmental Sensitivity 17
 - Specialist assessments identified 17
- Results of the environmental sensitivity of the proposed area 19
 - MAP OF RELATIVE AGRICULTURE THEME SENSITIVITY 19
 - MAP OF RELATIVE ANIMAL SPECIES THEME SENSITIVITY 20
 - MAP OF RELATIVE AQUATIC BIODIVERSITY THEME SENSITIVITY 21
 - MAP OF RELATIVE ARCHAEOLOGICAL AND CULTURAL HERITAGE THEME SENSITIVITY 22
 - MAP OF RELATIVE CIVIL AVIATION THEME SENSITIVITY 23
 - MAP OF RELATIVE DEFENCE THEME SENSITIVITY 24
 - MAP OF RELATIVE PALEONTOLOGY THEME SENSITIVITY 25
 - MAP OF RELATIVE PLANT SPECIES THEME SENSITIVITY 26
 - MAP OF RELATIVE TERRESTRIAL BIODIVERSITY THEME SENSITIVITY 27

Proposed Project Location

Orientation map 1: General location



Map of proposed site and relevant area(s)



Cadastral details of the proposed site

Property details:

No	Farm Name	Farm/ Erf No	Portion	Latitude	Longitude	Property Type
1	NEILERSDRIFT	46	0	28°45'3.37S	20°59'45.94E	Erven
2	NEILERSDRIFT	47	0	28°45'2.86S	20°59'45.84E	Erven
3	NEILERSDRIFT	97	0	28°45'3.01S	20°59'41.89E	Erven
4	NEILERSDRIFT	55	0	28°44'59.18S	20°59'43.07E	Erven
5	NEILERSDRIFT	59	0	28°45'0.54S	20°59'44.16E	Erven
6	NEILERSDRIFT	60	0	28°45'1.03S	20°59'44.26E	Erven
7	NEILERSDRIFT	61	0	28°45'1.53S	20°59'44.34E	Erven
8	NEILERSDRIFT	62	0	28°45'2.05S	20°59'44.45E	Erven
9	NEILERSDRIFT	63	0	28°45'2.55S	20°59'44.54E	Erven
10	NEILERSDRIFT	65	0	28°45'3.55S	20°59'44.73E	Erven
11	NEILERSDRIFT	67	0	28°45'4.11S	20°59'44.03E	Erven
12	NEILERSDRIFT	69	0	28°45'3.17S	20°59'43.83E	Erven
13	NEILERSDRIFT	70	0	28°45'2.68S	20°59'43.74E	Erven
14	NEILERSDRIFT	72	0	28°45'1.65S	20°59'43.53E	Erven
15	NEILERSDRIFT	74	0	28°45'0.65S	20°59'43.34E	Erven
16	NEILERSDRIFT	77	0	28°44'59.35S	20°59'41.41E	Erven
17	NEILERSDRIFT	78	0	28°44'59.28S	20°59'41.98E	Erven
18	NEILERSDRIFT	79	0	28°44'59.69S	20°59'42.07E	Erven
19	NEILERSDRIFT	80	0	28°45'0.08S	20°59'42.13E	Erven
20	NEILERSDRIFT	81	0	28°45'0.43S	20°59'42.19E	Erven
21	NEILERSDRIFT	83	0	28°45'1.14S	20°59'42.31E	Erven
22	NEILERSDRIFT	84	0	28°45'1.49S	20°59'42.37E	Erven
23	NEILERSDRIFT	87	0	28°45'2.55S	20°59'42.56E	Erven
24	NEILERSDRIFT	89	0	28°45'3.25S	20°59'42.69E	Erven
25	NEILERSDRIFT	91	0	28°45'3.96S	20°59'42.82E	Erven
26	NEILERSDRIFT	93	0	28°45'4.41S	20°59'42.17E	Erven
27	NEILERSDRIFT	94	0	28°45'4.06S	20°59'42.09E	Erven

28	NEILERSDRIFT	98	0	28°45'2.65S	20°59'41.83E	Erven
29	NEILERSDRIFT	99	0	28°45'2.3S	20°59'41.76E	Erven
30	NEILERSDRIFT	100	0	28°45'1.94S	20°59'41.7E	Erven
31	NEILERSDRIFT	102	0	28°45'1.24S	20°59'41.59E	Erven
32	NEILERSDRIFT	104	0	28°45'0.53S	20°59'41.49E	Erven
33	NEILERSDRIFT	105	0	28°45'0.17S	20°59'41.44E	Erven
34	NEILERSDRIFT	106	0	28°44'59.77S	20°59'41.42E	Erven
35	NEILERSDRIFT	109	0	28°45'3.03S	20°59'38.61E	Erven
36	NEILERSDRIFT	110	0	28°45'3.64S	20°59'38.59E	Erven
37	NEILERSDRIFT	111	0	28°45'4.02S	20°59'38.73E	Erven
38	NEILERSDRIFT	112	0	28°45'4.6S	20°59'38.72E	Erven
39	NEILERSDRIFT	114	0	28°45'5.95S	20°59'38.54E	Erven
40	NEILERSDRIFT	119	0	28°45'2.62S	20°59'39.89E	Erven
41	NEILERSDRIFT	120	0	28°45'2.61S	20°59'40.33E	Erven
42	NEILERSDRIFT	121	0	28°45'2.64S	20°59'40.75E	Erven
43	NEILERSDRIFT	123	0	28°45'3.46S	20°59'40.75E	Erven
44	NEILERSDRIFT	124	0	28°45'3.82S	20°59'40.79E	Erven
45	NEILERSDRIFT	127	0	28°45'4.88S	20°59'40.92E	Erven
46	NEILERSDRIFT	128	0	28°45'5.23S	20°59'40.97E	Erven
47	NEILERSDRIFT	130	0	28°45'5.96S	20°59'41.06E	Erven
48	NEILERSDRIFT	134	0	28°45'7.15S	20°59'42.15E	Erven
49	NEILERSDRIFT	135	0	28°45'7.44S	20°59'42.37E	Erven
50	NEILERSDRIFT	137	0	28°45'7.54S	20°59'41.55E	Erven
51	NEILERSDRIFT	138	0	28°45'7.25S	20°59'41.31E	Erven
52	NEILERSDRIFT	141	0	28°45'6.29S	20°59'40.58E	Erven
53	NEILERSDRIFT	142	0	28°45'6.33S	20°59'40E	Erven
54	NEILERSDRIFT	144	0	28°45'5.59S	20°59'40.07E	Erven
55	NEILERSDRIFT	149	0	28°45'3.81S	20°59'40.02E	Erven
56	NEILERSDRIFT	150	0	28°45'3.45S	20°59'40.01E	Erven
57	NEILERSDRIFT	151	0	28°45'3.1S	20°59'40E	Erven
58	NEILERSDRIFT	154	0	28°45'5.67S	20°59'44.1E	Erven
59	NEILERSDRIFT	225	0	28°45'9.1S	20°59'44.38E	Erven
60	NEILERSDRIFT	155	0	28°45'4.9S	20°59'44.97E	Erven
61	NEILERSDRIFT	157	0	28°45'5.9S	20°59'45.18E	Erven
62	NEILERSDRIFT	158	0	28°45'6.4S	20°59'45.26E	Erven
63	NEILERSDRIFT	161	0	28°45'7.89S	20°59'45.54E	Erven
64	NEILERSDRIFT	163	0	28°45'5.97S	20°59'42.89E	Erven
65	NEILERSDRIFT	167	0	28°45'5.07S	20°59'47.08E	Erven
66	NEILERSDRIFT	168	0	28°45'5.58S	20°59'47.19E	Erven
67	NEILERSDRIFT	170	0	28°45'6.56S	20°59'47.37E	Erven
68	NEILERSDRIFT	171	0	28°45'7.07S	20°59'47.46E	Erven
69	NEILERSDRIFT	172	0	28°45'7.59S	20°59'47.55E	Erven
70	NEILERSDRIFT	173	0	28°45'7.7S	20°59'46.77E	Erven
71	NEILERSDRIFT	174	0	28°45'7.21S	20°59'46.67E	Erven
72	NEILERSDRIFT	175	0	28°45'6.7S	20°59'46.57E	Erven
73	NEILERSDRIFT	176	0	28°45'6.2S	20°59'46.48E	Erven
74	NEILERSDRIFT	178	0	28°45'5.2S	20°59'46.29E	Erven
75	NEILERSDRIFT	193	0	28°45'7.67S	20°59'39.88E	Erven
76	NEILERSDRIFT	194	0	28°45'7.13S	20°59'39.93E	Erven
77	NEILERSDRIFT	196	0	28°45'8.01S	20°59'40.61E	Erven
78	NEILERSDRIFT	200	0	28°45'9.21S	20°59'41.58E	Erven
79	NEILERSDRIFT	201	0	28°45'9.5S	20°59'41.82E	Erven
80	NEILERSDRIFT	204	0	28°45'10.36S	20°59'42.54E	Erven
81	NEILERSDRIFT	207	0	28°45'10.81S	20°59'43.86E	Erven
82	NEILERSDRIFT	210	0	28°45'10.64S	20°59'45.06E	Erven
83	NEILERSDRIFT	211	0	28°45'10.59S	20°59'45.46E	Erven
84	NEILERSDRIFT	212	0	28°45'10.53S	20°59'45.86E	Erven
85	NEILERSDRIFT	213	0	28°45'10.48S	20°59'46.26E	Erven
86	NEILERSDRIFT	217	0	28°45'10.25S	20°59'47.86E	Erven
87	NEILERSDRIFT	218	0	28°45'10.21S	20°59'48.26E	Erven

88	NEILERSDRIFT	219	0	28°45'8.37S	20°59'42.27E	Erven
89	NEILERSDRIFT	221	0	28°45'8.28S	20°59'43.08E	Erven
90	NEILERSDRIFT	222	0	28°45'8.57S	20°59'43.32E	Erven
91	NEILERSDRIFT	223	0	28°45'8.86S	20°59'43.58E	Erven
92	NEILERSDRIFT	229	0	28°45'8.87S	20°59'45.97E	Erven
93	NEILERSDRIFT	230	0	28°45'8.82S	20°59'46.37E	Erven
94	NEILERSDRIFT	231	0	28°45'9.05S	20°59'47.04E	Erven
95	NEILERSDRIFT	233	0	28°45'8.61S	20°59'47.97E	Erven
96	NEILERSDRIFT	234	0	28°45'9.22S	20°59'48.09E	Erven
97	NEILERSDRIFT	237	0	28°45'9.51S	20°59'46.09E	Erven
98	NEILERSDRIFT	241	0	28°45'9.74S	20°59'44.49E	Erven
99	NEILERSDRIFT	243	0	28°45'9.54S	20°59'43.18E	Erven
100	NEILERSDRIFT	245	0	28°45'8.95S	20°59'42.74E	Erven
101	NEILERSDRIFT	247	0	28°45'8.36S	20°59'49.06E	Erven
102	NEILERSDRIFT	253	0	28°45'10.15S	20°59'49.92E	Erven
103	NEILERSDRIFT	256	0	28°45'9.48S	20°59'49.25E	Erven
104	NEILERSDRIFT	258	0	28°45'8.78S	20°59'49.12E	Erven
105	NEILERSDRIFT	262	0	28°45'9.17S	20°59'40.48E	Erven
106	NEILERSDRIFT	263	0	28°45'9.82S	20°59'41.17E	Erven
107	NEILERSDRIFT	264	0	28°45'10.16S	20°59'41.48E	Erven
108	NEILERSDRIFT	265	0	28°45'10.45S	20°59'41.72E	Erven
109	NEILERSDRIFT	266	0	28°45'10.74S	20°59'41.96E	Erven
110	NEILERSDRIFT	268	0	28°45'11.43S	20°59'42.49E	Erven
111	NEILERSDRIFT	269	0	28°45'11.58S	20°59'43.24E	Erven
112	NEILERSDRIFT	270	0	28°45'11.45S	20°59'43.97E	Erven
113	NEILERSDRIFT	272	0	28°45'11.34S	20°59'44.77E	Erven
114	NEILERSDRIFT	273	0	28°45'11.29S	20°59'45.18E	Erven
115	NEILERSDRIFT	274	0	28°45'11.23S	20°59'45.57E	Erven
116	NEILERSDRIFT	276	0	28°45'11.12S	20°59'46.38E	Erven
117	NEILERSDRIFT	277	0	28°45'11.06S	20°59'46.78E	Erven
118	NEILERSDRIFT	279	0	28°45'10.95S	20°59'47.58E	Erven
119	NEILERSDRIFT	280	0	28°45'10.89S	20°59'47.98E	Erven
120	NEILERSDRIFT	281	0	28°45'10.83S	20°59'48.37E	Erven
121	NEILERSDRIFT	287	0	28°45'12.52S	20°59'43.4E	Erven
122	NEILERSDRIFT	288	0	28°45'12.48S	20°59'43.76E	Erven
123	NEILERSDRIFT	294	0	28°45'12.14S	20°59'46.15E	Erven
124	NEILERSDRIFT	296	0	28°45'12.02S	20°59'46.95E	Erven
125	NEILERSDRIFT	297	0	28°45'11.97S	20°59'47.35E	Erven
126	NEILERSDRIFT	298	0	28°45'11.91S	20°59'47.75E	Erven
127	NEILERSDRIFT	299	0	28°45'11.86S	20°59'48.15E	Erven
128	NEILERSDRIFT	300	0	28°45'11.82S	20°59'48.55E	Erven
129	NEILERSDRIFT	302	0	28°45'12.5S	20°59'48.27E	Erven
130	NEILERSDRIFT	303	0	28°45'12.55S	20°59'47.87E	Erven
131	NEILERSDRIFT	305	0	28°45'12.67S	20°59'47.06E	Erven
132	NEILERSDRIFT	307	0	28°45'12.78S	20°59'46.27E	Erven
133	NEILERSDRIFT	309	0	28°45'12.89S	20°59'45.46E	Erven
134	NEILERSDRIFT	314	0	28°45'13.16S	20°59'43.51E	Erven
135	NEILERSDRIFT	329	0	28°44'58.36S	20°59'41.71E	Erven
136	NEILERSDRIFT	330	0	28°44'58.24S	20°59'42.48E	Erven
137	NEILERSDRIFT	334	0	28°44'59.99S	20°59'39.24E	Erven
138	NEILERSDRIFT	368	0	28°45'14.19S	20°59'45.18E	Erven
139	NEILERSDRIFT	369	0	28°45'14.11S	20°59'45.53E	Erven
140	NEILERSDRIFT	371	0	28°45'14.01S	20°59'46.36E	Erven
141	NEILERSDRIFT	372	0	28°45'13.97S	20°59'46.77E	Erven
142	NEILERSDRIFT	374	0	28°45'13.82S	20°59'47.55E	Erven
143	NEILERSDRIFT	376	0	28°45'14.5S	20°59'47.27E	Erven
144	NEILERSDRIFT	377	0	28°45'14.57S	20°59'46.85E	Erven
145	NEILERSDRIFT	379	0	28°45'14.69S	20°59'46.09E	Erven
146	NEILERSDRIFT	380	0	28°45'14.74S	20°59'45.66E	Erven
147	NEILERSDRIFT	381	0	28°45'14.81S	20°59'45.29E	Erven

148	NEILERSDRIFT	382	0	28°45'14.87S	20°59'44.85E	Erven
149	NEILERSDRIFT	388	0	28°45'15.83S	20°59'44.6E	Erven
150	NEILERSDRIFT	394	0	28°45'16.32S	20°59'45.57E	Erven
151	NEILERSDRIFT	395	0	28°45'16.39S	20°59'45.13E	Erven
152	NEILERSDRIFT	401	0	28°45'6.3S	20°59'43.2E	Erven
153	NEILERSDRIFT	402	0	28°45'6.79S	20°59'43.61E	Erven
154	NEILERSDRIFT	406	0	28°45'18.07S	20°59'46.71E	Erven
155	NEILERSDRIFT	408	0	28°45'3.26S	20°59'34.31E	Erven
156	NEILERSDRIFT	409	0	28°45'6.08S	20°59'34.33E	Erven
157	NEILERSDRIFT	410	0	28°45'20S	20°59'45.98E	Erven
158	NEILERSDRIFT	414	0	28°44'58.47S	20°59'37.56E	Erven
159	NEILERSDRIFT	415	0	28°44'59.06S	20°59'37.66E	Erven
160	NEILERSDRIFT	424	0	28°44'59.18S	20°59'34.35E	Erven
161	NEILERSDRIFT	426	0	28°44'59.13S	20°59'35.76E	Erven
162	NEILERSDRIFT	427	0	28°44'59.13S	20°59'36.44E	Erven
163	NEILERSDRIFT	430	0	28°44'59.87S	20°59'34.36E	Erven
164	NEILERSDRIFT	448	0	28°45'1.06S	20°59'35.58E	Erven
165	NEILERSDRIFT	452	0	28°45'2.01S	20°59'36.28E	Erven
166	NEILERSDRIFT	463	0	28°45'0.25S	20°59'37.69E	Erven
167	NEILERSDRIFT	465	0	28°45'1.24S	20°59'37.66E	Erven
168	NEILERSDRIFT	467	0	28°45'2.29S	20°59'37.7E	Erven
169	NEILERSDRIFT	468	0	28°45'2.89S	20°59'37.69E	Erven
170	NEILERSDRIFT	469	0	28°45'3.47S	20°59'37.64E	Erven
171	NEILERSDRIFT	470	0	28°45'4.04S	20°59'37.64E	Erven
172	NEILERSDRIFT	471	0	28°45'4.63S	20°59'37.65E	Erven
173	NEILERSDRIFT	507	0	28°45'2.88S	20°59'36.2E	Erven
174	KEIMOES	516	0	28°43'34.53S	20°59'12.44E	Erven
175	NEILERSDRIFT	593	0	28°45'15.89S	20°59'48.96E	Erven
176	NEILERSDRIFT	594	0	28°45'15.99S	20°59'48.27E	Erven
177	NEILERSDRIFT	595	0	28°45'16.07S	20°59'47.59E	Erven
178	NEILERSDRIFT	599	0	28°45'11.84S	20°59'49.49E	Erven
179	NEILERSDRIFT	601	0	28°45'13.6S	20°59'49.8E	Erven
180	NEILERSDRIFT	603	0	28°45'14.83S	20°59'50.08E	Erven
181	NEILERSDRIFT	604	0	28°45'17.54S	20°59'46.62E	Erven
182	NEILERSDRIFT	607	0	28°45'16.92S	20°59'48.58E	Erven
183	NEILERSDRIFT	608	0	28°45'16.85S	20°59'49.15E	Erven
184	NEILERSDRIFT	609	0	28°45'17.51S	20°59'49.27E	Erven
185	NEILERSDRIFT	611	0	28°45'17.66S	20°59'48.11E	Erven
186	NEILERSDRIFT	614	0	28°45'18.84S	20°59'47.75E	Erven
187	NEILERSDRIFT	615	0	28°45'18.81S	20°59'48.31E	Erven
188	NEILERSDRIFT	617	0	28°45'18.66S	20°59'49.45E	Erven
189	NEILERSDRIFT	618	0	28°45'19.24S	20°59'49.6E	Erven
190	NEILERSDRIFT	621	0	28°45'19.62S	20°59'47.92E	Erven
191	NEILERSDRIFT	645	0	28°45'20.61S	20°59'48.8E	Erven
192	NEILERSDRIFT	646	0	28°45'20.46S	20°59'49.27E	Erven
193	KENHARDT	1049	0	29°19'4.14S	21°8'20.41E	Erven
194	KENHARDT	1049	0	29°21'10.4S	21°10'46.02E	Erven
195	KENHARDT	2990	0	29°22'37.21S	21°8'1.38E	Erven
196	NEILERSDRIFT	64	0	28°45'3.05S	20°59'44.63E	Erven
197	NEILERSDRIFT	66	0	28°45'4S	20°59'44.8E	Erven
198	NEILERSDRIFT	71	0	28°45'2.18S	20°59'43.64E	Erven
199	NEILERSDRIFT	73	0	28°45'1.15S	20°59'43.44E	Erven
200	NEILERSDRIFT	76	0	28°44'59.66S	20°59'43.15E	Erven
201	NEILERSDRIFT	85	0	28°45'1.84S	20°59'42.42E	Erven
202	NEILERSDRIFT	95	0	28°45'3.71S	20°59'42.02E	Erven
203	NEILERSDRIFT	96	0	28°45'3.36S	20°59'41.96E	Erven
204	NEILERSDRIFT	103	0	28°45'0.88S	20°59'41.54E	Erven
205	NEILERSDRIFT	107	0	28°45'1.53S	20°59'39.22E	Erven
206	NEILERSDRIFT	108	0	28°45'2.45S	20°59'38.58E	Erven
207	NEILERSDRIFT	115	0	28°45'6.54S	20°59'38.54E	Erven

208	NEILERSDRIFT	116	0	28°45'7.13S	20°59'38.55E	Erven
209	NEILERSDRIFT	125	0	28°45'4.17S	20°59'40.84E	Erven
210	NEILERSDRIFT	132	0	28°45'6.57S	20°59'41.67E	Erven
211	NEILERSDRIFT	136	0	28°45'7.81S	20°59'41.8E	Erven
212	NEILERSDRIFT	145	0	28°45'5.24S	20°59'40.06E	Erven
213	NEILERSDRIFT	146	0	28°45'4.88S	20°59'40.05E	Erven
214	NEILERSDRIFT	148	0	28°45'4.17S	20°59'40.03E	Erven
215	NEILERSDRIFT	160	0	28°45'7.39S	20°59'45.46E	Erven
216	NEILERSDRIFT	164	0	28°45'5.69S	20°59'42.4E	Erven
217	NEILERSDRIFT	165	0	28°45'4.7S	20°59'46.2E	Erven
218	NEILERSDRIFT	192	0	28°45'8.18S	20°59'39.98E	Erven
219	NEILERSDRIFT	198	0	28°45'8.64S	20°59'41.09E	Erven
220	NEILERSDRIFT	203	0	28°45'10.07S	20°59'42.3E	Erven
221	NEILERSDRIFT	205	0	28°45'10.75S	20°59'42.81E	Erven
222	NEILERSDRIFT	208	0	28°45'10.76S	20°59'44.26E	Erven
223	NEILERSDRIFT	214	0	28°45'10.42S	20°59'46.67E	Erven
224	NEILERSDRIFT	215	0	28°45'10.36S	20°59'47.06E	Erven
225	NEILERSDRIFT	216	0	28°45'10.31S	20°59'47.46E	Erven
226	NEILERSDRIFT	45	0	28°45'3.8S	20°59'46.13E	Erven
227	NEILERSDRIFT	236	0	28°45'9.46S	20°59'46.49E	Erven
228	NEILERSDRIFT	239	0	28°45'9.62S	20°59'45.29E	Erven
229	NEILERSDRIFT	240	0	28°45'9.68S	20°59'44.89E	Erven
230	NEILERSDRIFT	242	0	28°45'9.94S	20°59'43.36E	Erven
231	NEILERSDRIFT	244	0	28°45'9.24S	20°59'42.98E	Erven
232	NEILERSDRIFT	246	0	28°45'8.67S	20°59'42.49E	Erven
233	NEILERSDRIFT	68	0	28°45'3.67S	20°59'43.93E	Erven
234	NEILERSDRIFT	254	0	28°45'10.27S	20°59'49.08E	Erven
235	NEILERSDRIFT	75	0	28°45'0.14S	20°59'43.24E	Erven
236	NEILERSDRIFT	257	0	28°45'9.13S	20°59'49.19E	Erven
237	NEILERSDRIFT	82	0	28°45'0.79S	20°59'42.24E	Erven
238	NEILERSDRIFT	86	0	28°45'2.2S	20°59'42.49E	Erven
239	NEILERSDRIFT	271	0	28°45'11.4S	20°59'44.37E	Erven
240	NEILERSDRIFT	88	0	28°45'2.9S	20°59'42.62E	Erven
241	NEILERSDRIFT	90	0	28°45'3.6S	20°59'42.75E	Erven
242	NEILERSDRIFT	286	0	28°45'12.59S	20°59'43.04E	Erven
243	NEILERSDRIFT	92	0	28°45'4.31S	20°59'42.86E	Erven
244	NEILERSDRIFT	289	0	28°45'12.42S	20°59'44.15E	Erven
245	NEILERSDRIFT	290	0	28°45'12.36S	20°59'44.55E	Erven
246	NEILERSDRIFT	101	0	28°45'1.59S	20°59'41.65E	Erven
247	NEILERSDRIFT	306	0	28°45'12.72S	20°59'46.67E	Erven
248	NEILERSDRIFT	308	0	28°45'12.84S	20°59'45.86E	Erven
249	NEILERSDRIFT	113	0	28°45'5.18S	20°59'38.72E	Erven
250	NEILERSDRIFT	310	0	28°45'12.95S	20°59'45.07E	Erven
251	NEILERSDRIFT	312	0	28°45'13.06S	20°59'44.26E	Erven
252	NEILERSDRIFT	313	0	28°45'13.11S	20°59'43.88E	Erven
253	NEILERSDRIFT	122	0	28°45'3.1S	20°59'40.7E	Erven
254	NEILERSDRIFT	126	0	28°45'4.52S	20°59'40.88E	Erven
255	NEILERSDRIFT	129	0	28°45'5.59S	20°59'41.01E	Erven
256	NEILERSDRIFT	326	0	28°44'58.76S	20°59'39.31E	Erven
257	NEILERSDRIFT	131	0	28°45'6.26S	20°59'41.43E	Erven
258	NEILERSDRIFT	328	0	28°44'58.47S	20°59'40.95E	Erven
259	NEILERSDRIFT	133	0	28°45'6.87S	20°59'41.91E	Erven
260	NEILERSDRIFT	139	0	28°45'6.96S	20°59'41.07E	Erven
261	NEILERSDRIFT	140	0	28°45'6.68S	20°59'40.83E	Erven
262	NEILERSDRIFT	143	0	28°45'5.95S	20°59'40.05E	Erven
263	NEILERSDRIFT	147	0	28°45'4.52S	20°59'40.04E	Erven
264	NEILERSDRIFT	152	0	28°45'5.23S	20°59'42.33E	Erven
265	NEILERSDRIFT	153	0	28°45'5.29S	20°59'42.94E	Erven
266	NEILERSDRIFT	365	0	28°45'14.36S	20°59'43.93E	Erven
267	NEILERSDRIFT	156	0	28°45'5.41S	20°59'45.08E	Erven

268	NEILERSDRIFT	159	0	28°45'6.89S	20°59'45.37E	Erven
269	NEILERSDRIFT	370	0	28°45'14.07S	20°59'45.96E	Erven
270	NEILERSDRIFT	162	0	28°45'7.57S	20°59'44.42E	Erven
271	NEILERSDRIFT	373	0	28°45'13.9S	20°59'47.17E	Erven
272	NEILERSDRIFT	375	0	28°45'13.68S	20°59'48.02E	Erven
273	NEILERSDRIFT	378	0	28°45'14.6S	20°59'46.45E	Erven
274	NEILERSDRIFT	383	0	28°45'14.92S	20°59'44.45E	Erven
275	NEILERSDRIFT	384	0	28°45'14.98S	20°59'43.99E	Erven
276	NEILERSDRIFT	169	0	28°45'6.08S	20°59'47.28E	Erven
277	NEILERSDRIFT	389	0	28°45'15.77S	20°59'45.01E	Erven
278	NEILERSDRIFT	390	0	28°45'15.68S	20°59'45.43E	Erven
279	NEILERSDRIFT	391	0	28°45'15.64S	20°59'45.81E	Erven
280	NEILERSDRIFT	392	0	28°45'15.57S	20°59'46.26E	Erven
281	NEILERSDRIFT	177	0	28°45'5.71S	20°59'46.38E	Erven
282	NEILERSDRIFT	407	0	28°45'21.96S	20°59'47.06E	Erven
283	NEILERSDRIFT	195	0	28°45'7.55S	20°59'40.33E	Erven
284	NEILERSDRIFT	197	0	28°45'8.35S	20°59'40.85E	Erven
285	NEILERSDRIFT	199	0	28°45'8.93S	20°59'41.34E	Erven
286	NEILERSDRIFT	202	0	28°45'9.78S	20°59'42.06E	Erven
287	NEILERSDRIFT	425	0	28°44'59.15S	20°59'35.07E	Erven
288	NEILERSDRIFT	209	0	28°45'10.7S	20°59'44.66E	Erven
289	NEILERSDRIFT	220	0	28°45'8.01S	20°59'42.83E	Erven
290	NEILERSDRIFT	447	0	28°45'1.14S	20°59'35.02E	Erven
291	NEILERSDRIFT	226	0	28°45'9.04S	20°59'44.78E	Erven
292	NEILERSDRIFT	450	0	28°45'1.03S	20°59'36.35E	Erven
293	NEILERSDRIFT	227	0	28°45'8.99S	20°59'45.18E	Erven
294	NEILERSDRIFT	228	0	28°45'8.93S	20°59'45.57E	Erven
295	NEILERSDRIFT	232	0	28°45'8.65S	20°59'47.58E	Erven
296	NEILERSDRIFT	235	0	28°45'9.29S	20°59'47.69E	Erven
297	NEILERSDRIFT	238	0	28°45'9.56S	20°59'45.68E	Erven
298	NEILERSDRIFT	255	0	28°45'9.83S	20°59'49.32E	Erven
299	NEILERSDRIFT	267	0	28°45'11.02S	20°59'42.2E	Erven
300	NEILERSDRIFT	275	0	28°45'11.17S	20°59'45.97E	Erven
301	NEILERSDRIFT	278	0	28°45'11.01S	20°59'47.17E	Erven
302	NEILERSDRIFT	291	0	28°45'12.31S	20°59'44.95E	Erven
303	NEILERSDRIFT	292	0	28°45'12.25S	20°59'45.35E	Erven
304	NEILERSDRIFT	293	0	28°45'12.19S	20°59'45.75E	Erven
305	NEILERSDRIFT	295	0	28°45'12.08S	20°59'46.55E	Erven
306	NEILERSDRIFT	301	0	28°45'12.43S	20°59'48.66E	Erven
307	NEILERSDRIFT	304	0	28°45'12.61S	20°59'47.46E	Erven
308	NEILERSDRIFT	536	0	28°44'59.93S	20°59'38.56E	Erven
309	NEILERSDRIFT	311	0	28°45'13.01S	20°59'44.67E	Erven
310	NEILERSDRIFT	315	0	28°45'13.2S	20°59'43.14E	Erven
311	NEILERSDRIFT	325	0	28°44'59.01S	20°59'38.47E	Erven
312	NEILERSDRIFT	327	0	28°44'58.62S	20°59'40.06E	Erven
313	NEILERSDRIFT	602	0	28°45'14.21S	20°59'49.98E	Erven
314	NEILERSDRIFT	366	0	28°45'14.3S	20°59'44.34E	Erven
315	NEILERSDRIFT	367	0	28°45'14.25S	20°59'44.75E	Erven
316	NEILERSDRIFT	644	0	28°45'20.94S	20°59'48.33E	Erven
317	NEILERSDRIFT	393	0	28°45'16.36S	20°59'45.95E	Erven
318	NEILERSDRIFT	428	0	28°44'59.67S	20°59'35.93E	Erven
319	NEILERSDRIFT	429	0	28°44'59.87S	20°59'35.13E	Erven
320	NEILERSDRIFT	449	0	28°45'0.58S	20°59'36.37E	Erven
321	NEILERSDRIFT	451	0	28°45'1.5S	20°59'36.3E	Erven
322	NEILERSDRIFT	453	0	28°45'1.86S	20°59'35.53E	Erven
323	NEILERSDRIFT	464	0	28°45'0.83S	20°59'37.65E	Erven
324	NEILERSDRIFT	466	0	28°45'1.76S	20°59'37.66E	Erven
325	KEIMoes	515	0	28°43'34.63S	20°59'19.6E	Erven
326	NEILERSDRIFT	537	0	28°45'0.34S	20°59'38.6E	Erven
327	NEILERSDRIFT	538	0	28°44'59.73S	20°59'40.02E	Erven

328	NEILERSDRIFT	539	0	28°45'0.29S	20°59'40.04E	Erven
329	NEILERSDRIFT	591	0	28°45'15.39S	20°59'48.11E	Erven
330	NEILERSDRIFT	592	0	28°45'15.24S	20°59'48.83E	Erven
331	NEILERSDRIFT	597	0	28°45'14.32S	20°59'48.75E	Erven
332	NEILERSDRIFT	598	0	28°45'11.03S	20°59'49.35E	Erven
333	NEILERSDRIFT	600	0	28°45'12.36S	20°59'49.62E	Erven
334	KENHARDT	1049	0	29°17'20.93S	21°10'35.36E	Erven
335	KENHARDT	1049	0	29°21'27S	21°7'6.77E	Erven
336	NEILERSDRIFT	605	0	28°45'17.09S	20°59'47.45E	Erven
337	NEILERSDRIFT	606	0	28°45'17.01S	20°59'47.98E	Erven
338	NEILERSDRIFT	610	0	28°45'17.58S	20°59'48.68E	Erven
339	NEILERSDRIFT	612	0	28°45'17.74S	20°59'47.56E	Erven
340	NEILERSDRIFT	613	0	28°45'18.94S	20°59'47.07E	Erven
341	NEILERSDRIFT	616	0	28°45'18.69S	20°59'48.88E	Erven
342	NEILERSDRIFT	619	0	28°45'19.35S	20°59'49.01E	Erven
343	NEILERSDRIFT	620	0	28°45'19.47S	20°59'48.5E	Erven
344	NEILERSDRIFT	622	0	28°45'19.59S	20°59'47.37E	Erven
345	NEILERSDRIFT	647	0	28°45'20.39S	20°59'49.79E	Erven
346	KENHARDT	1431	0	29°20'53.54S	21°8'24.65E	Erven
347	KENHARDT	2759	0	29°19'48.86S	21°9'16.44E	Erven
348	KENHARDT	3006	0	29°18'55.62S	21°9'20.85E	Erven
349	UITKYK	889	0	30°1'11.27S	20°9'52.29E	Farm
350	ZOO AFS KOLK	326	0	29°53'57.27S	20°25'4.76E	Farm
351	STOF BAKJES	303	0	29°50'44.14S	20°46'11.87E	Farm
352	KLAAS JOBS VLEY	302	0	29°51'11.65S	20°40'40.41E	Farm
353	BYSTEEK	423	0	29°57'5.04S	20°15'13.31E	Farm
354	KARREE BOSCH KOLK	329	0	29°57'52.2S	20°24'1.05E	Farm
355	BYSTEEK	327	0	29°56'31.07S	20°12'11.15E	Farm
356	ROOIKOP ISLAND	343	0	28°43'42.92S	21°0'32.97E	Farm
357	N'ROUGAS NOORD	108	0	29°4'34.6S	21°8'55.87E	Farm
358	ZONDER HUIS	249	0	29°38'10.37S	20°53'0.86E	Farm
359	STYNS VLEY	280	0	29°46'55.41S	20°35'35.93E	Farm
360	BOSCH DUIF	275	0	29°45'32.33S	20°51'49.7E	Farm
361	KARREE BOOM KOLK	248	0	29°33'32.11S	20°53'12.42E	Farm
362	GROOT VLOER	325	0	29°55'19.44S	20°31'29.78E	Farm
363	N'ROUGAS ZUID	121	0	29°8'36.46S	21°13'31.44E	Farm
364	NEILERS DRIFT	34	0	28°49'22.22S	20°59'59.7E	Farm
365	DRIEKOP OOST	183	0	29°25'33.19S	21°7'28.98E	Farm
366	RAS ZYN PUTS NOORD	328	0	29°59'47.22S	20°18'46.74E	Farm
367	KNAP ZAK	250	0	29°36'28.7S	20°58'5.74E	Farm
368	GEMSBOKS RIVIER	301	0	29°49'45.89S	20°31'41.81E	Farm
369	LEEUEW KOP	166	0	29°16'45.89S	21°6'0.19E	Farm
370	KLIPHEUVELS	304	0	29°49'23.87S	20°50'17.05E	Farm
371	VLEY KALK	276	0	29°42'8.09S	20°47'59.71E	Farm
372	DE BAKKEN	186	0	29°29'44.07S	20°58'17.19E	Farm
373	DRIEKOP WEST	184	0	29°27'13.65S	21°3'34.93E	Farm
374	PIET ROOIS PUTS	56	0	28°56'53.88S	21°8'55.9E	Farm
375	EKSTEENS KUIL	35	0	28°48'19.81S	21°4'41.5E	Farm
376	WOLF KOP	122	0	29°13'7.01S	21°7'42.08E	Farm
377		390	0	29°41'51.82S	20°52'5.37E	Farm
378	NEILERS DRIFT	34	187	28°45'50.13S	21°0'14.56E	Farm Portion
379	NEILERS DRIFT	34	196	28°47'42.41S	21°1'18.55E	Farm Portion
380	NEILERS DRIFT	34	188	28°48'12.14S	21°1'32.75E	Farm Portion
381	NEILERS DRIFT	34	187	28°48'49.24S	21°1'10.81E	Farm Portion
382	NEILERS DRIFT	34	188	28°47'0.08S	21°1'36.78E	Farm Portion
383	EKSTEENS KUIL	35	16	28°51'34.79S	21°5'27.53E	Farm Portion
384	NEILERS DRIFT	34	14	28°44'30.23S	20°59'11.38E	Farm Portion

385	NEILERS DRIFT	34	223	28°44'39.43S	20°59'18.46E	Farm Portion
386	NEILERS DRIFT	34	220	28°44'39.46S	20°59'15.93E	Farm Portion
387	NEILERS DRIFT	34	140	28°44'56.44S	20°59'41.85E	Farm Portion
388	NEILERS DRIFT	34	140	28°45'12.55S	20°59'55.54E	Farm Portion
389	NEILERS DRIFT	34	213	28°45'31.94S	20°59'52.63E	Farm Portion
390	NEILERS DRIFT	34	225	28°44'39.48S	20°59'15.94E	Farm Portion
391	NEILERS DRIFT	34	40	28°44'41.78S	20°59'18.02E	Farm Portion
392	NEILERS DRIFT	34	190	28°44'40.31S	20°59'20.9E	Farm Portion
393	NEILERS DRIFT	34	171	28°44'46.49S	20°59'20.08E	Farm Portion
394	NEILERS DRIFT	34	185	28°44'37.95S	20°59'25.37E	Farm Portion
395	NEILERS DRIFT	34	222	28°44'40.59S	20°59'16.78E	Farm Portion
396	NEILERS DRIFT	34	20	28°44'31.52S	20°59'14.55E	Farm Portion
397	NEILERS DRIFT	34	173	28°44'55.03S	20°59'29.5E	Farm Portion
398	NEILERS DRIFT	34	46	28°44'49.45S	20°59'23.87E	Farm Portion
399	NEILERS DRIFT	34	49	28°44'48.75S	20°59'22.78E	Farm Portion
400	NEILERS DRIFT	34	123	28°44'15.57S	20°59'11.5E	Farm Portion
401	NEILERS DRIFT	34	206	28°44'29.99S	20°59'14.26E	Farm Portion
402	NEILERS DRIFT	34	207	28°44'23.53S	20°59'13.84E	Farm Portion
403	NEILERS DRIFT	34	104	28°44'21.05S	20°59'2.56E	Farm Portion
404	NEILERS DRIFT	34	1	28°44'21.01S	20°59'12.96E	Farm Portion
405	NEILERS DRIFT	34	144	28°50'35.37S	21°1'33.52E	Farm Portion
406	NEILERS DRIFT	34	187	28°50'37.51S	21°2'44.29E	Farm Portion
407	NEILERS DRIFT	34	145	28°52'28.84S	21°2'0.09E	Farm Portion
408	NEILERS DRIFT	34	208	28°44'23.11S	20°59'13.96E	Farm Portion
409	NEILERS DRIFT	34	194	28°52'18.02S	21°2'55.93E	Farm Portion
410	NEILERS DRIFT	34	195	28°51'48.44S	21°2'37.43E	Farm Portion
411	NEILERS DRIFT	34	195	28°51'31.03S	21°2'30.63E	Farm Portion
412	NEILERS DRIFT	34	6	28°44'45.12S	20°59'26.7E	Farm Portion
413	NEILERS DRIFT	34	0	28°44'45.09S	20°59'30.08E	Farm Portion
414	NEILERS DRIFT	34	119	28°44'13.64S	20°59'19.43E	Farm Portion
415	NEILERS DRIFT	34	217	28°44'17.28S	20°59'12.37E	Farm Portion
416	NEILERS DRIFT	34	208	28°44'17.27S	20°59'11.49E	Farm Portion
417	NEILERS DRIFT	34	217	28°44'18.85S	20°59'13.54E	Farm Portion
418	NEILERS DRIFT	34	209	28°44'20.49S	20°59'13.59E	Farm Portion
419	NEILERS DRIFT	34	156	28°44'23.34S	20°59'20.37E	Farm Portion
420	NEILERS DRIFT	34	1	28°44'16.01S	21°0'0.93E	Farm Portion
421	NEILERS DRIFT	34	205	28°44'29.8S	20°59'13.99E	Farm Portion
422	NEILERS DRIFT	34	149	28°44'33.86S	20°59'7.61E	Farm Portion
423	PIET ROOIS PUTS	56	11	28°54'19.31S	21°4'13.18E	Farm Portion
424	PIET ROOIS PUTS	56	10	28°56'30.91S	21°5'37.13E	Farm Portion
425	PIET ROOIS PUTS	56	3	28°57'50.77S	21°6'27.77E	Farm Portion
426	PIET ROOIS PUTS	56	8	28°59'42.66S	21°7'23.31E	Farm Portion
427	PIET ROOIS PUTS	56	2	29°0'7.61S	21°7'32.96E	Farm Portion
428	PIET ROOIS PUTS	56	7	29°2'36.67S	21°8'51.75E	Farm Portion
429	PIET ROOIS PUTS	56	6	29°2'36.35S	21°8'53.47E	Farm Portion
430	PIET ROOIS PUTS	56	6	29°2'24.76S	21°8'25.8E	Farm Portion
431	PIET ROOIS PUTS	56	2	29°0'16.23S	21°9'27.55E	Farm Portion
432	PIET ROOIS PUTS	56	3	28°59'27.71S	21°6'34.53E	Farm Portion
433	PIET ROOIS PUTS	56	0	28°56'41.66S	21°4'57.11E	Farm Portion
434	PIET ROOIS PUTS	56	0	28°57'34.96S	21°8'44.63E	Farm Portion
435	PIET ROOIS PUTS	56	1	28°54'5.93S	21°7'13.42E	Farm Portion
436	PIET ROOIS PUTS	56	1	28°55'14.73S	21°4'12.6E	Farm Portion
437	PIET ROOIS PUTS	56	9	28°58'12.28S	21°6'36.83E	Farm Portion
438	N'ROUGAS NOORD	108	2	29°2'39.79S	21°8'55.66E	Farm Portion
439	N'ROUGAS NOORD	108	6	29°3'35.68S	21°9'1.63E	Farm Portion
440	N'ROUGAS NOORD	108	2	29°5'23.38S	21°7'52.32E	Farm Portion
441	N'ROUGAS NOORD	108	1	29°4'7.32S	21°11'47.38E	Farm Portion
442	N'ROUGAS ZUID	121	0	29°8'44.5S	21°8'37.77E	Farm Portion
443	WOLF KOP	122	5	29°14'33.63S	21°9'58.9E	Farm Portion
444	WOLF KOP	122	4	29°15'17.87S	21°9'52.56E	Farm Portion

445	WOLF KOP	122	1	29°13'33.43S	21°7'10.62E	Farm Portion
446	WOLF KOP	122	3	29°12'4.41S	21°9'4.62E	Farm Portion
447	LEE UW KOP	166	5	29°15'59.31S	21°9'46.43E	Farm Portion
448	LEE UW KOP	166	2	29°15'44.57S	21°10'11.4E	Farm Portion
449	LEE UW KOP	166	2	29°17'12.58S	21°7'50.95E	Farm Portion
450	DRIEKOP OOST	183	3	29°24'23.77S	21°6'17.38E	Farm Portion
451	DRIEKOP OOST	183	0	29°24'36.28S	21°8'22.83E	Farm Portion
452	DRIEKOP OOST	183	0	29°24'13.47S	21°5'42.78E	Farm Portion
453	DRIEKOP OOST	183	1	29°26'36.83S	21°7'17.82E	Farm Portion
454	DRIEKOP WEST	184	0	29°28'1.06S	21°4'44.29E	Farm Portion
455	DE BAKKEN	186	0	29°31'25.97S	20°58'59.55E	Farm Portion
456	DE BAKKEN	186	2	29°30'22.16S	21°1'38.4E	Farm Portion
457	DE BAKKEN	186	4	29°32'8.64S	21°0'2.09E	Farm Portion
458	DE BAKKEN	186	0	29°32'18.58S	21°0'19.57E	Farm Portion
459	KARREE BOOM KOLK	248	4	29°33'15.58S	20°59'8.28E	Farm Portion
460	KARREE BOOM KOLK	248	0	29°33'14.93S	20°59'29.47E	Farm Portion
461	KARREE BOOM KOLK	248	0	29°33'20.69S	20°56'52.08E	Farm Portion
462	ZONDER HUIS	249	4	29°38'11.87S	20°52'58.99E	Farm Portion
463	KNAP ZAK	250	2	29°35'53.64S	20°57'1.16E	Farm Portion
464	KNAP ZAK	250	0	29°35'47.52S	20°55'50.64E	Farm Portion
465	BOSCH DUIF	275	2	29°45'54.33S	20°48'17.18E	Farm Portion
466	BOSCH DUIF	275	1	29°45'53S	20°47'46.63E	Farm Portion
467	VLEY KALK	276	1	29°42'11.38S	20°47'54.49E	Farm Portion
468	STYNS VLEY	280	3	29°49'14.38S	20°36'22.77E	Farm Portion
469	GEMSBOKS RIVIER	301	0	29°49'23.94S	20°29'55.37E	Farm Portion
470	GEMSBOKS RIVIER	301	1	29°50'7.75S	20°33'27.79E	Farm Portion
471	KLAAS JOBS VLEY	302	1	29°49'43.76S	20°40'55.57E	Farm Portion
472	STOF BAKJES	303	2	29°48'20.16S	20°45'59.88E	Farm Portion
473	STOF BAKJES	303	0	29°49'25.02S	20°44'42.12E	Farm Portion
474	STOF BAKJES	303	1	29°52'11.61S	20°43'45.96E	Farm Portion
475	STOF BAKJES	303	0	29°50'50.39S	20°46'10.09E	Farm Portion
476	KLIPHEUVELS	304	0	29°46'54.75S	20°46'55.89E	Farm Portion
477	KLIPHEUVELS	304	0	29°49'43.33S	20°49'6.95E	Farm Portion
478	KLIPHEUVELS	304	3	29°46'57.64S	20°47'9.21E	Farm Portion
479	GROOT VLOER	325	0	29°55'19.44S	20°31'29.78E	Farm Portion
480	ZOO AFS KOLK	326	0	29°53'57.27S	20°25'4.76E	Farm Portion
481	BYSTEEK	327	2	29°57'14.43S	20°13'26.71E	Farm Portion
482	BYSTEEK	327	3	29°55'32.22S	20°13'56.78E	Farm Portion
483	BYSTEEK	327	6	29°56'36.52S	20°12'5.63E	Farm Portion
484	BYSTEEK	327	4	29°55'17.67S	20°12'58.72E	Farm Portion
485	BYSTEEK	327	5	29°57'19.99S	20°11'32.38E	Farm Portion
486	RAS ZYN PUTS NOORD	328	1	29°58'14.28S	20°19'5.65E	Farm Portion
487	KARREE BOSCH KOLK	329	0	29°57'39.31S	20°23'56.72E	Farm Portion
488	ROOIKOP ISLAND	343	65	28°44'3.65S	20°59'11.72E	Farm Portion
489	ROOIKOP ISLAND	343	103	28°43'49.42S	20°59'10.81E	Farm Portion
490	ROOIKOP ISLAND	343	47	28°43'55.61S	20°59'21.64E	Farm Portion
491		390	0	29°41'39.36S	20°50'0.48E	Farm Portion
492	BYSTEEK	423	0	29°57'5.94S	20°15'16.77E	Farm Portion
493	UITKYK	889	4	30°0'5.05S	20°9'31.3E	Farm Portion
494	UITKYK	889	1	29°58'41.12S	20°9'16.55E	Farm Portion
495	UITKYK	889	5	30°1'59.73S	20°10'12.95E	Farm Portion
496	NEILERSDRIFT	413	0	28°44'57.96S	20°59'37.59E	Public Place
497	NEILERSDRIFT	590	0	28°45'15.7S	20°59'46.93E	Public Place
498	NEILERSDRIFT	412	0	28°44'58.13S	20°59'31.81E	Public Place
499	NEILERSDRIFT	206	0	28°45'10.92S	20°59'43.34E	Public Place

500	NEILERSDRIFT	596	0	28°45'14.38S	20°59'47.96E	Public Place
501	NEILERSDRIFT	224	0	28°45'9.55S	20°59'43.88E	Public Place

Development footprint¹ vertices:
No development footprint(s) specified.

Wind and Solar developments with an approved Environmental Authorisation or applications under consideration within 30 km of the proposed area

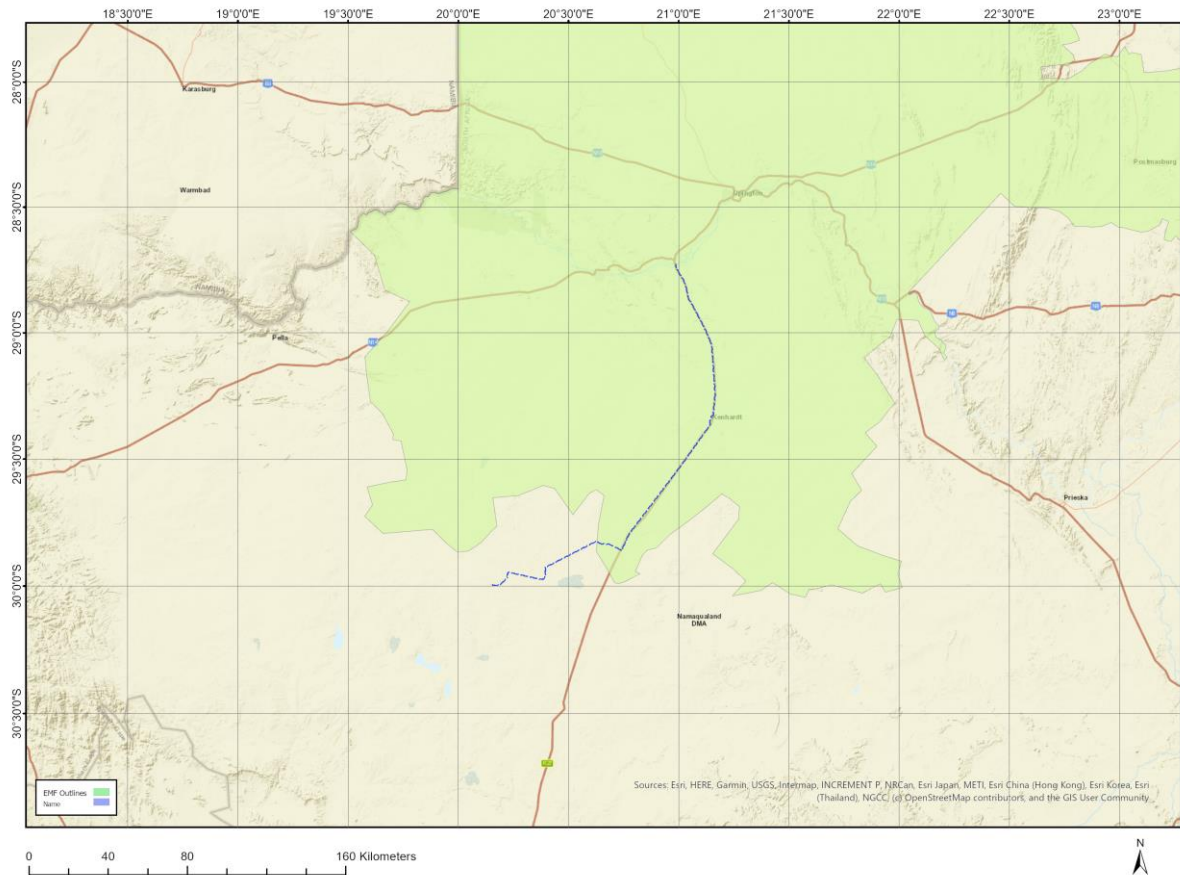
No	EIA Reference No	Classification	Status of application	Distance from proposed area (km)
1	12/12/20/2264/AM2	Solar PV	Approved	16.4
2	12/12/20/2170/1	Solar PV	Approved	16.4
3	14/12/16/3/3/2/621/AM2	Solar PV	Approved	26.7
4	12/12/20/2098/2	Solar PV	Approved	21.2
5	14/12/16/3/3/2/841	Solar PV	Approved	15.8
6	14/12/16/3/3/1/2231/AM1	Solar PV	Approved	16.8
7	14/12/16/3/3/1/2210	Solar PV	Approved	10.7
8	14/12/16/3/3/2/694/4	Solar - CSP	Approved	0
9	14/12/16/3/3/1/2205	Solar PV	Approved	10.7
10	12/12/20/2230/AM3	Solar PV	Approved	10.7
11	14/12/16/3/3/2/481/AM4	Solar PV	Approved	21.6
12	14/12/16/3/3/2/344/AM3	Solar PV	Approved	17.1
13	12/12/20/1831	Solar - CSP	Approved	23.5
14	14/12/16/3/3/2/538/1/AM3	Solar PV	Approved	17.1
15	14/12/16/3/3/2/838/AM1	Solar PV	Approved	12.1
16	14/12/16/3/3/1/2043	Solar PV	Approved	13.9
17	14/12/16/3/3/1/2110	Solar PV	Approved	26.8
18	14/12/16/3/3/2/846	Solar PV	Approved	15.8
19	14/12/16/3/3/2/695	Solar PV	Approved	0
20	14/12/16/3/3/1/2207	Solar PV	Approved	10.7
21	14/12/16/3/3/2/838/AM2	Solar PV	Approved	12.1
22	14/12/16/3/3/2/696/AM2	Solar PV	Approved	0
23	14/12/16/3/3/1/2124	Solar PV	Approved	23.5
24	14/12/16/3/3/2/694/2	Solar - CSP	Approved	0
25	14/12/16/3/3/2/2027	Solar PV	Approved	0
26	12/12/20/777	Solar - CSP	Approved	29.5
27	14/12/16/3/3/2/1095	Solar PV	Approved	16.8
28	14/12/16/3/3/1/2112	Solar PV	Approved	23.5
29	14/12/16/3/3/1/2125/AM3	Solar PV	Approved	12.1
30	14/12/16/3/3/1/2125	Solar PV	Approved	12.1
31	14/12/16/3/3/1/2202	Solar PV	Approved	23.5
32	14/12/16/3/3/1/2206	Solar PV	Approved	10.7
33	14/12/16/3/3/1/2126/AM3	Solar PV	Approved	12.1
34	14/12/16/3/3/1/2344	Solar PV	Approved	0.2
35	12/12/20/2113/AM3	Wind	Approved	17.1
36	14/12/16/3/3/2/1035	Solar PV	Approved	22.3
37	14/12/16/3/3/1/2107	Solar PV	Approved	13.9
38	12/12/20/2631	Solar PV	Approved	22.6

¹ "development footprint", means the area within the site on which the development will take place and includes all ancillary developments for example roads, power lines, boundary walls, paving etc. which require vegetation clearance or which will be disturbed and for which the application has been submitted.

39	14/12/16/3/3/2/696	Solar PV	Approved	0
40	14/12/16/3/3/1/2126	Solar PV	Approved	12.1
41	14/12/16/3/3/2/343/AM1	Solar PV	Approved	20.1
42	14/12/16/3/3/3/82	Solar - CSP	Approved	25.1
43	14/12/16/3/3/2/711/AM2	Solar PV	Approved	15.8
44	14/12/16/3/3/1/2127	Solar PV	Approved	12.1
45	14/12/16/3/3/1/2042	Solar PV	Approved	13.9
46	12/12/20/2113/AM2	Solar PV	Approved	17.1
47	14/12/16/3/3/2/1072	Solar PV	Approved	7.3
48	14/12/16/3/3/2/1033	Solar PV	Approved	22.3
49	12/12/20/2430	Solar PV	Approved	22.6
50	14/12/16/3/3/1/2490	Solar PV	Approved	0
51	12/12/20/2170/3/AM2	Solar PV	Approved	16.4
52	12/12/20/2631/AM4	Solar PV	Approved	22.6
53	12/12/20/2518	Solar PV	Approved	0.1
54	14/12/16/3/3/2/343	Solar PV	Approved	20.1
55	14/12/16/3/3/1/2346	Solar PV	Approved	0.2
56	12/12/20/1831/1	Solar - CSP	Approved	23.5
57	14/12/16/3/3/1/2111	Solar PV	Approved	23.5
58	14/12/16/3/3/2/656/AM1	Solar - CSP	Approved	23.5
59	14/12/16/3/3/2/847	Solar PV	Approved	15.8
60	14/12/16/3/3/1/2075	Solar PV	Approved	21.6
61	14/12/16/3/3/2/469/AM2	Solar PV	Approved	25.2
62	12/12/20/2430/AM3	Solar PV	Approved	22.6
63	14/12/16/3/3/2/1073	Solar PV	Approved	7.3
64	14/12/16/3/3/2/844	Solar PV	Approved	24.7
65	14/12/16/3/3/1/1754	Solar PV	Approved	4
66	14/12/16/3/3/1/2345	Solar PV	Approved	0
67	14/12/16/3/3/2/843	Solar PV	Approved	24.7
68	14/12/16/3/3/1/1755	Solar PV	Approved	4.8
69	12/12/20/1831/3	Solar PV	Approved	23.5
70	14/12/16/3/3/1/2043/AM2	Solar PV	Approved	13.9
71	14/12/16/3/3/2/815	Solar PV	Approved	13.9
72	12/12/20/2170/2/AM2	Solar PV	Approved	16.4
73	14/12/16/3/3/2/469/AM1	Solar PV	Approved	21.6
74	12/12/20/2113	Solar PV	Approved	17.1
75	12/12/20/2229/AM4	Solar PV	Approved	7
76	12/12/20/2113/AM1	Solar PV	Approved	17.1
77	12/12/20/2631/AM3	Solar PV	Approved	22.6
78	14/12/16/3/3/1/2362	Solar PV	Approved	11.7
79	12/12/20/2264	Solar PV	Approved	16.4
80	12/12/20/2170/2	Solar PV	Approved	16.4
81	14/12/16/3/3/2/1034	Solar PV	Approved	22.3
82	14/12/16/3/3/2/694/2/AM1	Solar - CSP	Approved	0
83	14/12/16/3/3/1/2113	Solar PV	Approved	23.5
84	14/12/16/3/3/2/694/1	Solar - CSP	Approved	2.8
85	12/12/20/2170/1/AM2	Solar PV	Approved	16.4
86	14/12/16/3/3/1/2209	Solar PV	Approved	10.7
87	12/12/20/2229	Solar PV	Approved	7
88	14/12/16/3/3/1/2676	Solar PV	Approved	26
89	14/12/16/3/3/2/631	Solar PV	Approved	11.3
90	14/12/16/3/3/2/837/AM1	Solar PV	Approved	12.1
91	14/12/16/3/3/2/1094	Solar PV	Approved	15.1
92	14/12/16/3/3/2/845	Solar PV	Approved	15.8
93	14/12/16/3/3/2/481/AM1	Solar PV	Approved	21.6
94	14/12/16/3/3/1/1578	Solar - CSP	Approved	21.5
95	14/12/16/3/3/2/836/AM2	Solar PV	Approved	12.1
96	14/12/16/3/3/2/344	Solar PV	Approved	20.1
97	14/12/16/3/3/1/2231	Solar PV	Approved	16.8
98	14/12/16/3/3/1/2044/AM2	Solar PV	Approved	13.9

99	12/12/20/2631/AM5	Solar PV	Approved	22.6
100	12/12/20/2230	Solar PV	Approved	10.7
101	14/12/16/3/3/2/344/AM1	Solar PV	Approved	17.1
102	14/12/16/3/3/2/705	Solar PV	Approved	16.8
103	14/12/16/3/3/2/657	Solar - CSP	Approved	23.5
104	14/12/16/3/3/2/656	Solar - CSP	Approved	23.5
105	14/12/16/3/3/2/2223	Solar PV	Approved	2.8
106	14/12/16/3/3/1/2044	Solar PV	Approved	13.9
107	14/12/16/3/3/2/1071	Solar PV	Approved	7.3
108	14/12/16/3/3/2/538/AM3	Solar PV	Approved	17.1
109	12/12/20/2170/3	Solar PV	Approved	16.4
110	12/12/20/2170	Solar PV	Approved	16.4
111	14/12/16/3/3/2/837/AM2	Solar PV	Approved	12.1
112	12/12/20/2430/AM1	Solar PV	Approved	22.6
113	14/12/16/3/3/2/816	Solar PV	Approved	13.9
114	14/12/16/3/3/2/836/AM1	Solar PV	Approved	12.1
115	12/12/20/2204	Solar PV	Approved	16.8
116	14/12/16/3/3/1/2208	Solar PV	Approved	10.7
117	14/12/16/3/3/2/469	Solar PV	Approved	21.6
118	14/12/16/3/3/2/842	Solar PV	Approved	15.8
119	12/12/20/2631/A2	Solar PV	Approved	22.6
120	14/12/16/3/3/2/344/AM2	Solar PV	Approved	17.1
121	14/12/16/3/3/2/694	Solar - CSP	Approved	2.8
122	14/12/16/3/3/1/2343	Solar PV	Approved	0.2
123	14/12/16/3/3/1/2209/AM1	Solar PV	Approved	10.7
124	12/12/20/1831/2	Solar - CSP	Approved	23.5
125	14/12/16/3/3/2/343/AM2	Solar PV	Approved	17.1
126	14/12/16/3/3/1/2204	Solar PV	Approved	10.7
127	14/12/16/3/3/1/1906	Solar PV	Approved	7.3
128	14/12/16/3/3/2/481/AM3	Solar PV	Approved	21.6

Environmental Management Frameworks relevant to the application



Environmental Management Framework	LINK
Siyanda District Municipality EMF	https://screening.environment.gov.za/ScreeningDownloads/EMF/SIYANDA EMF REPORT 2008.pdf

Environmental screening results and assessment outcomes

The following sections contain a summary of any development incentives, restrictions, exclusions or prohibitions that apply to the proposed development site as well as the most environmental sensitive features on the site based on the site sensitivity screening results for the application classification that was selected. The application classification selected for this report is: **Utilities Infrastructure | Pipelines | Water | Fresh_Storm Water.**

Relevant development incentives, restrictions, exclusions or prohibitions

The following development incentives, restrictions, exclusions or prohibitions and their implications that apply to this site are indicated below.

Incentive, restriction or prohibition	Implication
Strategic Transmission Corridor-Western	https://screening.environment.gov.za/ScreeningDownloads/Developmen

corridor	tZones/Combined_EGI.pdf
Strategic Transmission Corridor-Northern corridor	https://screening.environment.gov.za/ScreeningDownloads/DevelopmentZones/Combined_EGI.pdf
Renewable energy development zones 7-Upington	https://screening.environment.gov.za/ScreeningDownloads/DevelopmentZones/Combined_REDZ.pdf

Proposed Development Area Environmental Sensitivity

The following summary of the development site environmental sensitivities is identified. Only the highest environmental sensitivity is indicated. The footprint environmental sensitivities for the proposed development footprint as identified, are indicative only and must be verified on site by a suitably qualified person before the specialist assessments identified below can be confirmed.

Theme	Very High sensitivity	High sensitivity	Medium sensitivity	Low sensitivity
Agriculture Theme		X		
Animal Species Theme		X		
Aquatic Biodiversity Theme	X			
Archaeological and Cultural Heritage Theme	X			
Civil Aviation Theme		X		
Defence Theme				X
Paleontology Theme		X		
Plant Species Theme			X	
Terrestrial Biodiversity Theme	X			

Specialist assessments identified

Based on the selected classification, and the known impacts associated with the proposed development, the following list of specialist assessments have been identified for inclusion in the assessment report. It is the responsibility of the EAP to confirm this list and to motivate in the assessment report, the reason for not including any of the identified specialist study including the provision of photographic evidence of the site situation.

No	Specialist assessment	Assessment Protocol
1	Agricultural Impact Assessment	https://screening.environment.gov.za/ScreeningDownloads/AssessmentProtocols/Gazetted_General_Agriculture_Assessment_Protocols.pdf
2	Archaeological and Cultural Heritage Impact Assessment	https://screening.environment.gov.za/ScreeningDownloads/AssessmentProtocols/Gazetted_General_Requirement_Assessment_Protocols.pdf
3	Palaeontology Impact Assessment	https://screening.environment.gov.za/ScreeningDownloads/AssessmentProtocols/Gazetted_General_Requirement_Assessment_Protocols.pdf
4	Terrestrial Biodiversity Impact Assessment	https://screening.environment.gov.za/ScreeningDownloads/AssessmentProtocols/Gazetted_Terrestrial_Biodiversity_Assessment_Protocols.pdf
5	Aquatic Biodiversity Impact Assessment	https://screening.environment.gov.za/ScreeningDownloads/AssessmentProtocols/Gazetted_Aquatic_Biodiversity_Assessment_Protocols.pdf

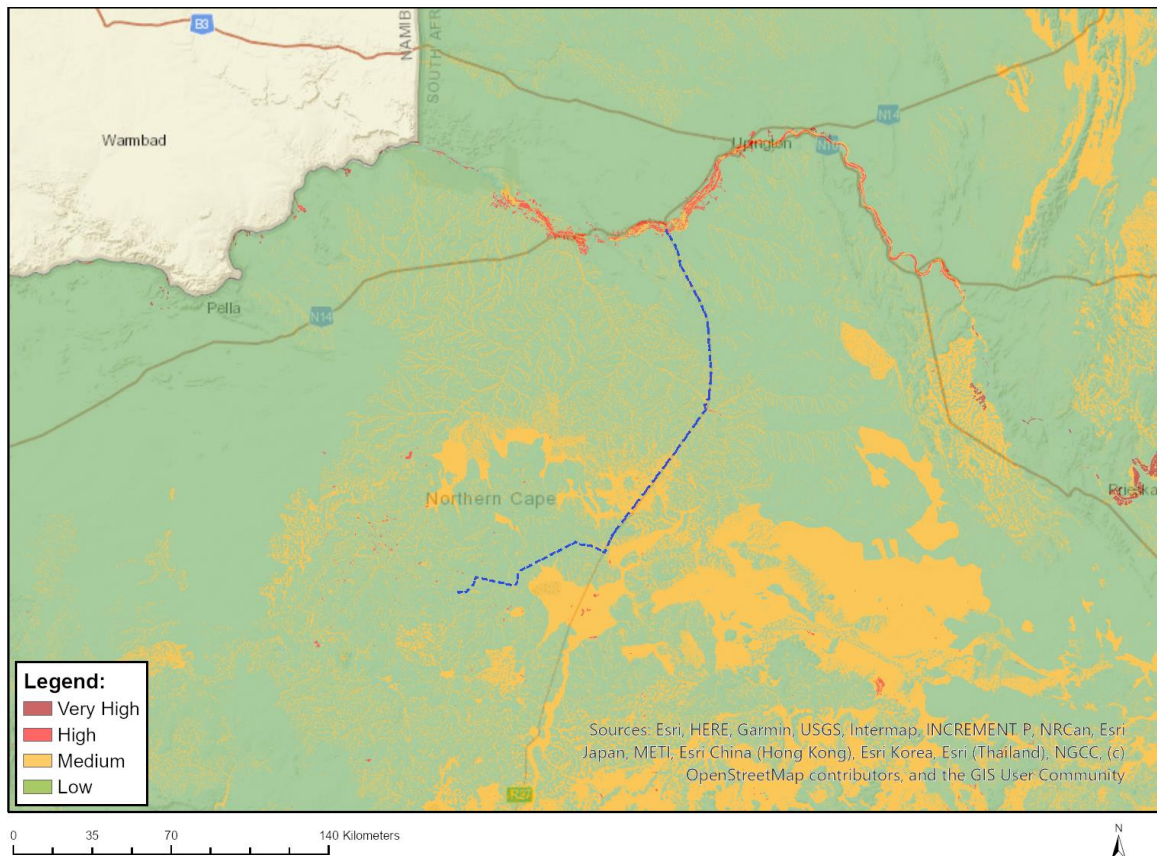
		otocols.pdf
6	Geotechnical Assessment	https://screening.environment.gov.za/ScreeningDownloads/AssessmentProtocols/Gazetted_General_Requirement_Assessment_Protocols.pdf
7	Socio-Economic Assessment	https://screening.environment.gov.za/ScreeningDownloads/AssessmentProtocols/Gazetted_General_Requirement_Assessment_Protocols.pdf
8	Plant Species Assessment	https://screening.environment.gov.za/ScreeningDownloads/AssessmentProtocols/Gazetted_Plant_Species_Assessment_Protocols.pdf
9	Animal Species Assessment	https://screening.environment.gov.za/ScreeningDownloads/AssessmentProtocols/Gazetted_Animal_Species_Assessment_Protocols.pdf

OFFICIAL

Results of the environmental sensitivity of the proposed area.

The following section represents the results of the screening for environmental sensitivity of the proposed site for relevant environmental themes associated with the project classification. It is the duty of the EAP to ensure that the environmental themes provided by the screening tool are comprehensive and complete for the project. Refer to the disclaimer.

MAP OF RELATIVE AGRICULTURE THEME SENSITIVITY

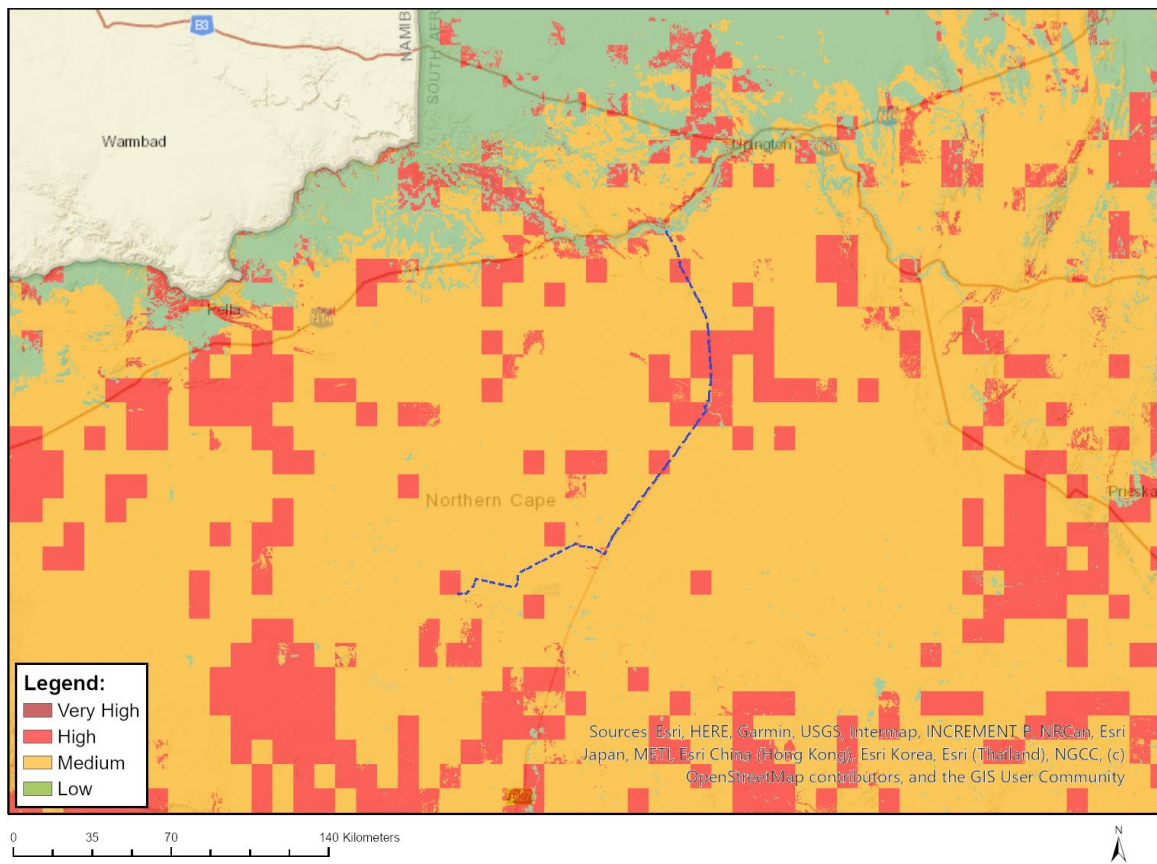


Very High sensitivity	High sensitivity	Medium sensitivity	Low sensitivity
	X		

Sensitivity Features:

Sensitivity	Feature(s)
High	Annual Crop Cultivation / Planted Pastures Rotation; Land capability; 01. Very low/02. Very low/03. Low-Very low/04. Low-Very low/05. Low
High	Annual Crop Cultivation / Planted Pastures Rotation; Land capability; 06. Low-Moderate/07. Low-Moderate/08. Moderate
Low	Land capability; 01. Very low/02. Very low/03. Low-Very low/04. Low-Very low/05. Low
Medium	Land capability; 06. Low-Moderate/07. Low-Moderate/08. Moderate

MAP OF RELATIVE ANIMAL SPECIES THEME SENSITIVITY



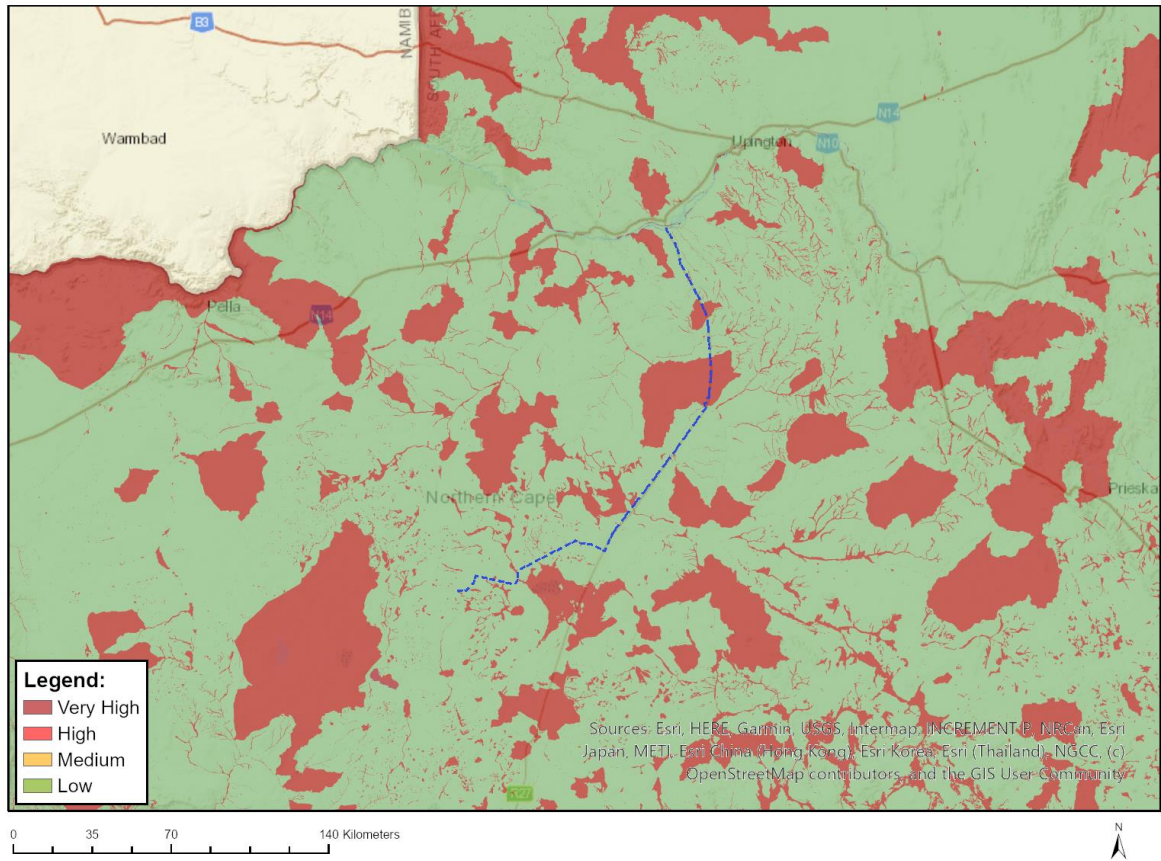
Where only a sensitive plant unique number or sensitive animal unique number is provided in the screening report and an assessment is required, the environmental assessment practitioner (EAP) or specialist is required to email SANBI at eiadatarequests@sanbi.org.za listing all sensitive species with their unique identifiers for which information is required. The name has been withheld as the species may be prone to illegal harvesting and must be protected. SANBI will release the actual species name after the details of the EAP or specialist have been documented.

Very High sensitivity	High sensitivity	Medium sensitivity	Low sensitivity
	X		

Sensitivity Features:

Sensitivity	Feature(s)
High	Aves-Falco biarmicus
High	Aves-Neotis ludwigii
High	Aves-Polemaetus bellicosus
High	Aves-Calendulauda burra
Low	Subject to confirmation
Medium	Aves-Hydroprogne caspia
Medium	Aves-Neotis ludwigii
Medium	Aves-Calendulauda burra

MAP OF RELATIVE AQUATIC BIODIVERSITY THEME SENSITIVITY

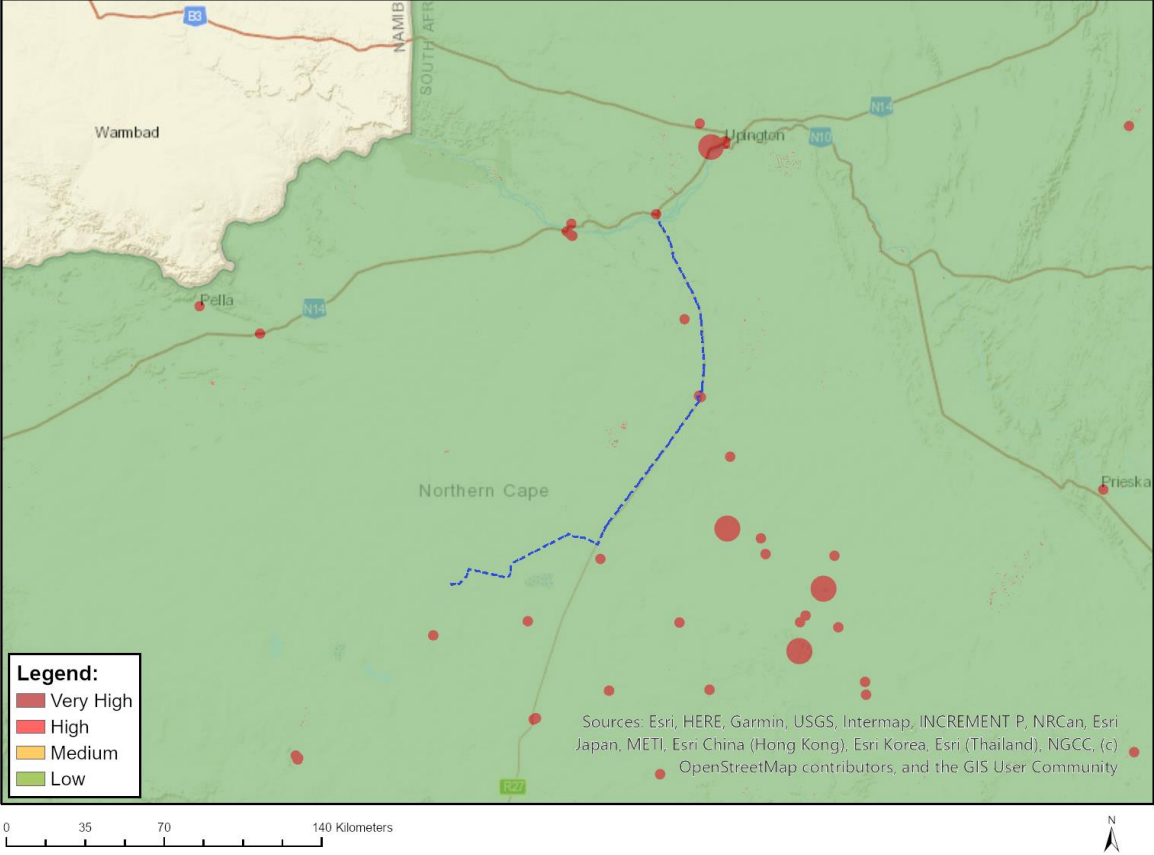


Very High sensitivity	High sensitivity	Medium sensitivity	Low sensitivity
X			

Sensitivity Features:

Sensitivity	Feature(s)
Low	Low sensitivity
Very High	FEPA Subcatchment
Very High	Rivers_AB
Very High	Rivers_B
Very High	Rivers_C
Very High	Rivers_Z
Very High	Wetlands_(River)
Very High	Wetlands_Bushmanland Bioregion (Depression)

MAP OF RELATIVE ARCHAEOLOGICAL AND CULTURAL HERITAGE THEME SENSITIVITY

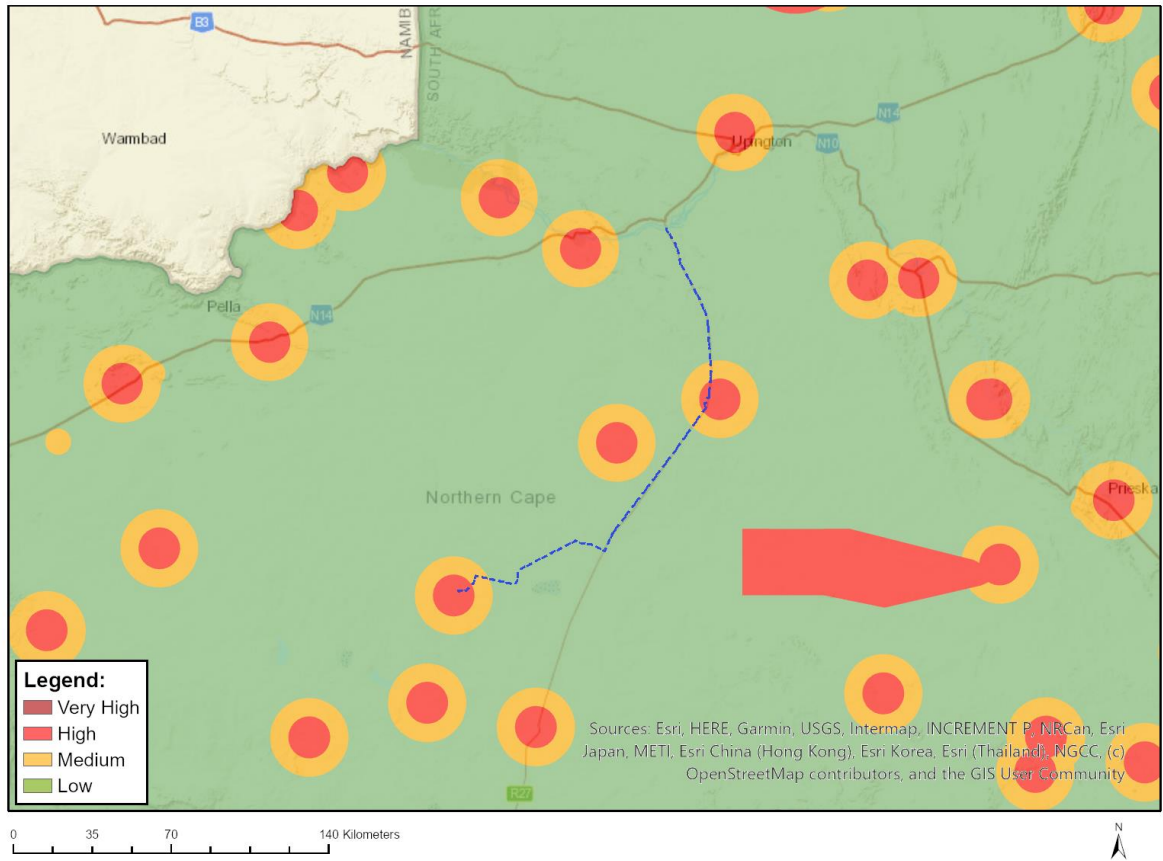


Very High sensitivity	High sensitivity	Medium sensitivity	Low sensitivity
X			

Sensitivity Features:

Sensitivity	Feature(s)
Low	Low sensitivity
Very High	Within 2km of a Grade II Heritage site

MAP OF RELATIVE CIVIL AVIATION THEME SENSITIVITY

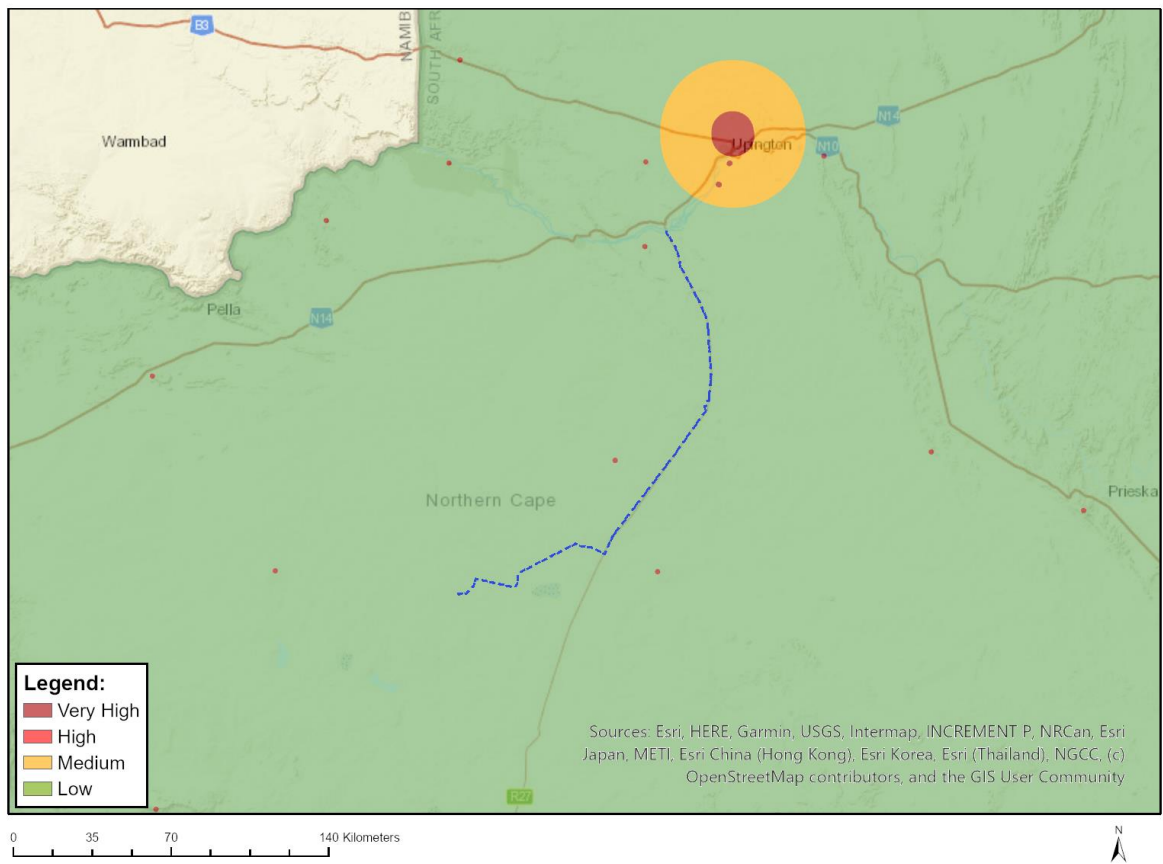


Very High sensitivity	High sensitivity	Medium sensitivity	Low sensitivity
	X		

Sensitivity Features:

Sensitivity	Feature(s)
High	Within 8 km of other civil aviation aerodrome
Low	Low sensitivity
Medium	Between 8 and 15 km of other civil aviation aerodrome

MAP OF RELATIVE DEFENCE THEME SENSITIVITY

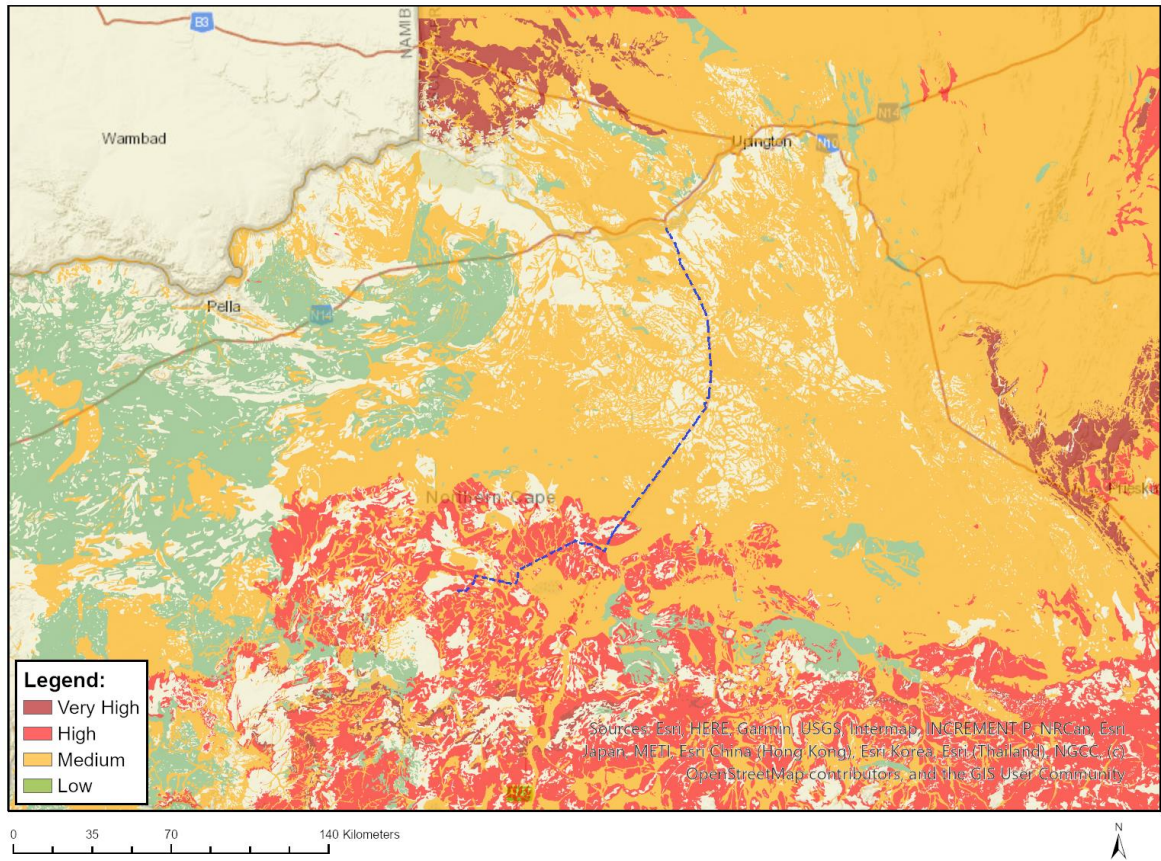


Very High sensitivity	High sensitivity	Medium sensitivity	Low sensitivity
			X

Sensitivity Features:

Sensitivity	Feature(s)
Low	Low Sensitivity

MAP OF RELATIVE PALEONTOLOGY THEME SENSITIVITY

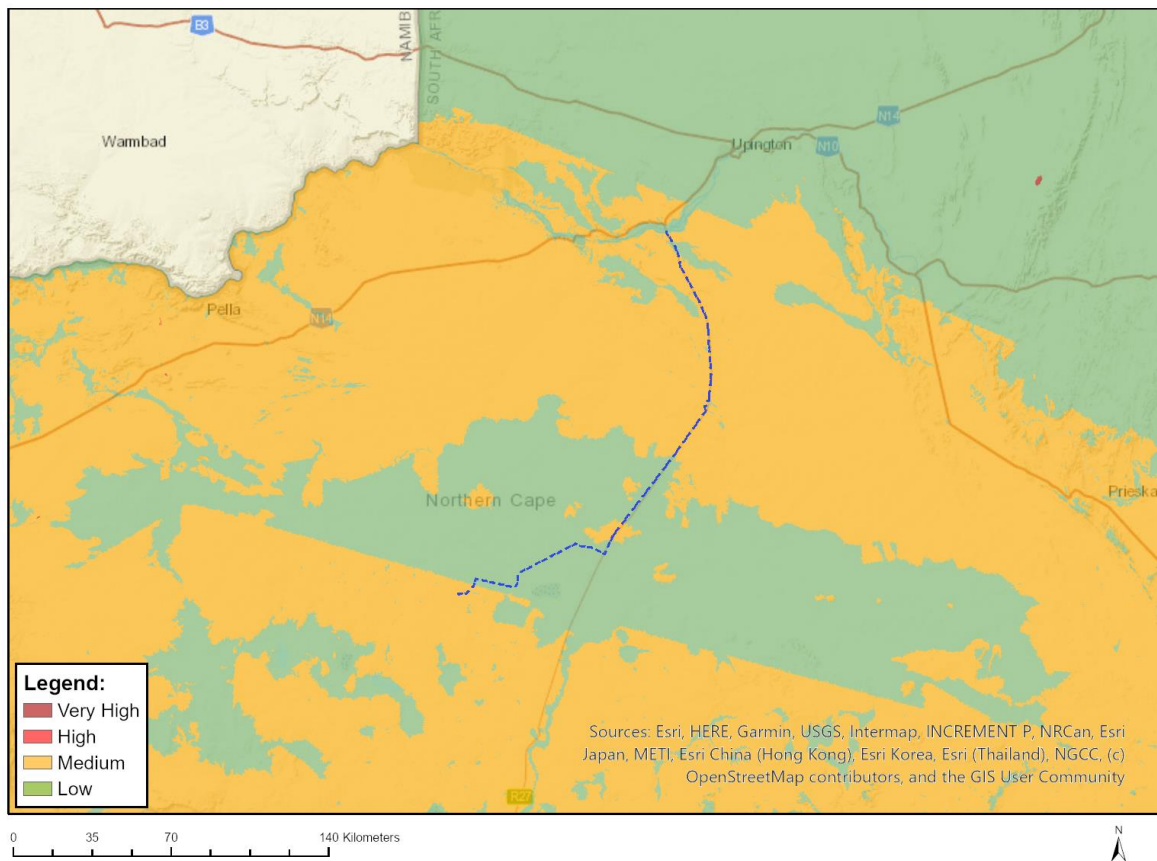


Very High sensitivity	High sensitivity	Medium sensitivity	Low sensitivity
	X		

Sensitivity Features:

Sensitivity	Feature(s)
High	Features with a High paleontological sensitivity
Medium	Features with a Medium paleontological sensitivity

MAP OF RELATIVE PLANT SPECIES THEME SENSITIVITY



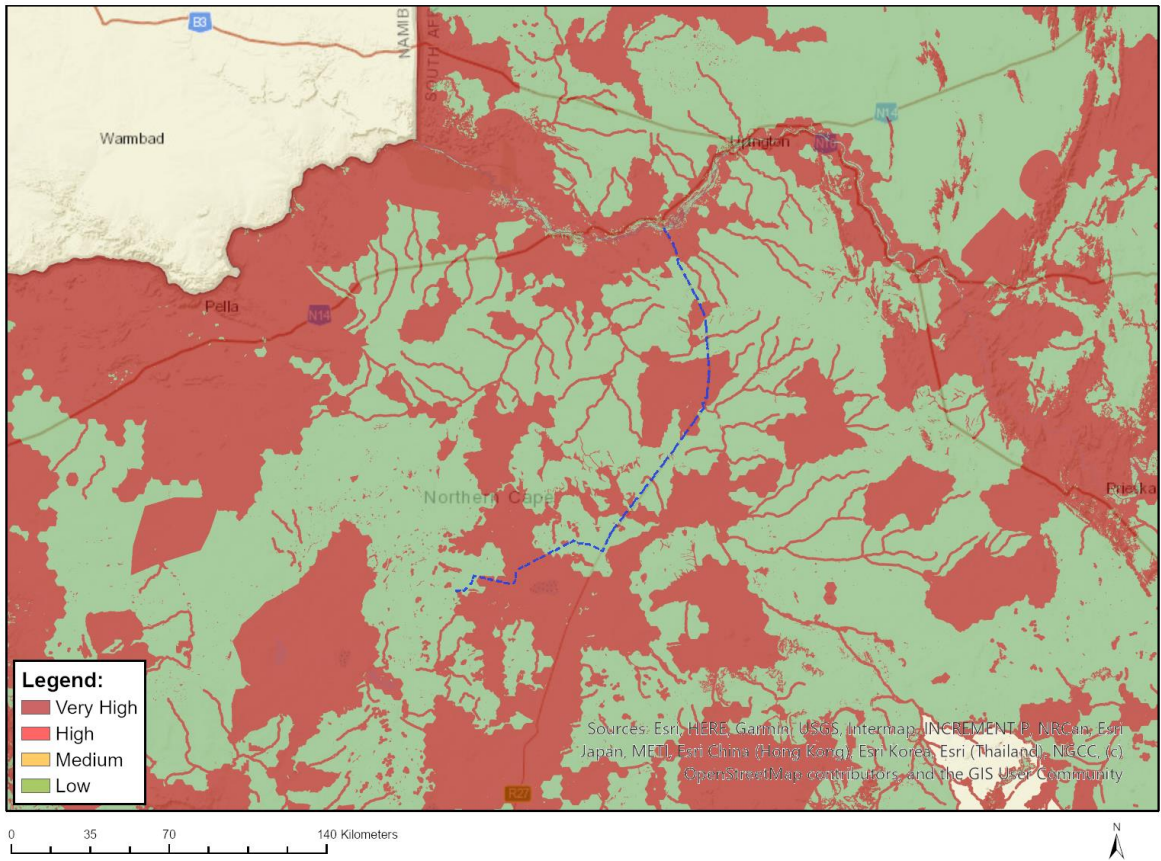
Where only a sensitive plant unique number or sensitive animal unique number is provided in the screening report and an assessment is required, the environmental assessment practitioner (EAP) or specialist is required to email SANBI at aiadatarequests@sanbi.org.za listing all sensitive species with their unique identifiers for which information is required. The name has been withheld as the species may be prone to illegal harvesting and must be protected. SANBI will release the actual species name after the details of the EAP or specialist have been documented.

Very High sensitivity	High sensitivity	Medium sensitivity	Low sensitivity
		X	

Sensitivity Features:

Sensitivity	Feature(s)
Low	Low Sensitivity
Medium	Tridentea virescens
Medium	Sensitive species 144
Medium	Dregeochloa calviniensis

MAP OF RELATIVE TERRESTRIAL BIODIVERSITY THEME SENSITIVITY



Very High sensitivity	High sensitivity	Medium sensitivity	Low sensitivity
X			

Sensitivity Features:

Sensitivity	Feature(s)
Low	Low Sensitivity
Very High	CBA 1
Very High	CBA 2
Very High	ESA
Very High	FEPA Subcatchment
Very High	National Protected Area Expansion Strategy (NPAES)