

**SCREENING REPORT FOR AN ENVIRONMENTAL AUTHORIZATION AS
REQUIRED BY THE 2014 EIA REGULATIONS – PROPOSED SITE
ENVIRONMENTAL SENSITIVITY**

EIA Reference number: N/a

Project name: KTE

Project title: KTE Brandvlei BWS

Date screening report generated: 20/08/2024 12:30:13

Applicant: Kutulo Tsatsi Energy (Pty) Ltd

Compiler: PB Consult

Compiler signature:
.....

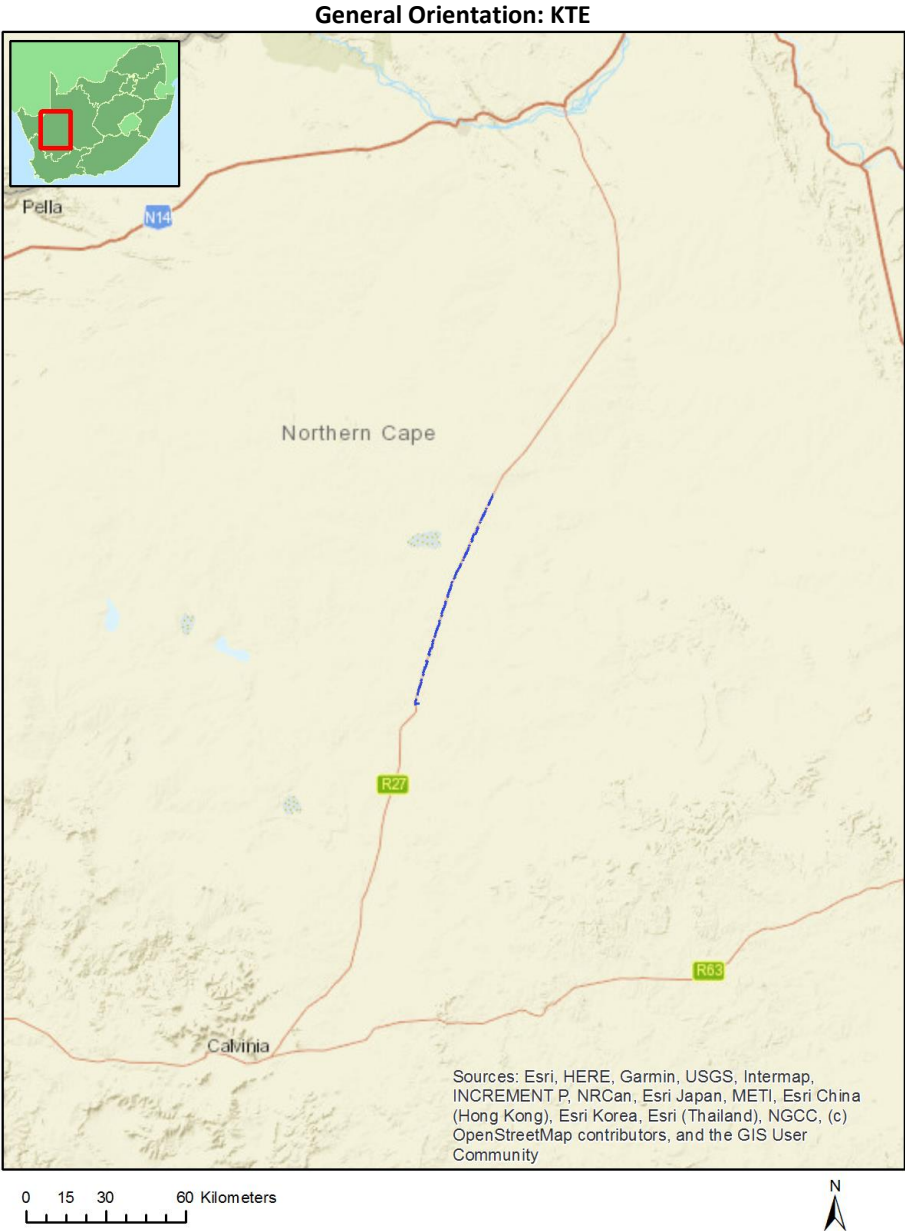
Application Category: Utilities Infrastructure|Pipelines|Water|Fresh_Storm Water

Table of Contents

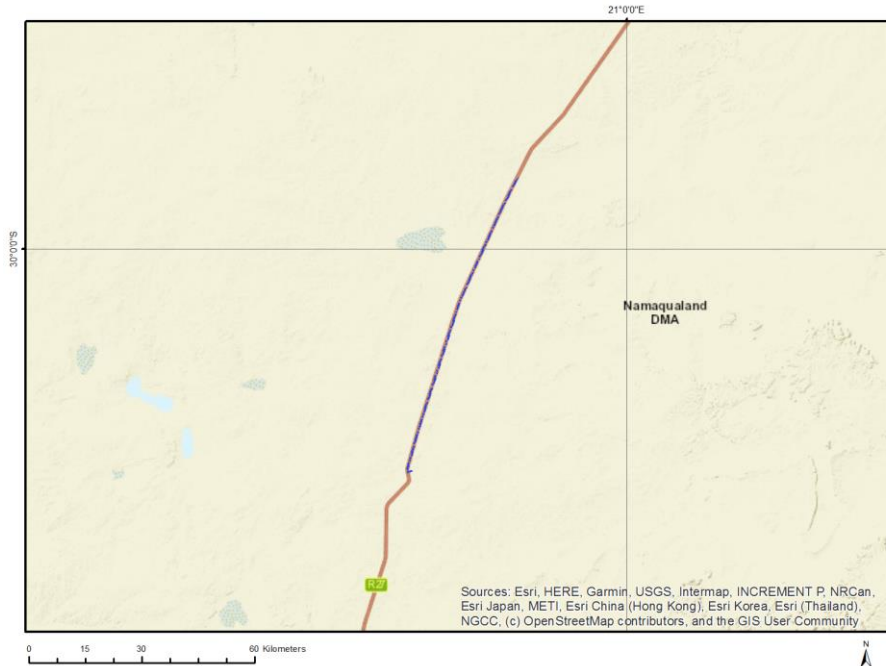
- Proposed Project Location 3
 - Orientation map 1: General location 3
- Map of proposed site and relevant area(s) 4
 - Cadastral details of the proposed site 4
 - Wind and Solar developments with an approved Environmental Authorisation or applications under consideration within 30 km of the proposed area 5
 - Environmental Management Frameworks relevant to the application 6
- Environmental screening results and assessment outcomes 6
 - Relevant development incentives, restrictions, exclusions or prohibitions 6
 - Proposed Development Area Environmental Sensitivity 7
 - Specialist assessments identified 7
- Results of the environmental sensitivity of the proposed area 9
 - MAP OF RELATIVE AGRICULTURE THEME SENSITIVITY 9
 - MAP OF RELATIVE ANIMAL SPECIES THEME SENSITIVITY 10
 - MAP OF RELATIVE AQUATIC BIODIVERSITY THEME SENSITIVITY 11
 - MAP OF RELATIVE ARCHAEOLOGICAL AND CULTURAL HERITAGE THEME SENSITIVITY 12
 - MAP OF RELATIVE CIVIL AVIATION THEME SENSITIVITY 13
 - MAP OF RELATIVE DEFENCE THEME SENSITIVITY 14
 - MAP OF RELATIVE PALEONTOLOGY THEME SENSITIVITY 15
 - MAP OF RELATIVE PLANT SPECIES THEME SENSITIVITY 16
 - MAP OF RELATIVE TERRESTRIAL BIODIVERSITY THEME SENSITIVITY 17

Proposed Project Location

Orientation map 1: General location



Map of proposed site and relevant area(s)



Cadastral details of the proposed site

Property details:

No	Farm Name	Farm/ Erf No	Portion	Latitude	Longitude	Property Type
1	BRANDVLEI	1222	0	30°26'56.53S	20°28'46.14E	Erven
2	BRANDVLEI	339	0	30°30'4.68S	20°28'25.43E	Erven
3	KLEIN QUAGGAS RIVIER	323	0	29°56'38.96S	20°42'46.95E	Farm
4	STOF BAKJES	303	0	29°50'44.14S	20°46'11.87E	Farm
5	KLEIN LEMOEN KOP WEST	322	0	29°55'23.25S	20°46'20.27E	Farm
6	KRANSKOP	20	0	30°13'5.33S	20°32'8.32E	Farm
7	HARDE VLEY	201	0	30°22'8.41S	20°30'47.22E	Farm
8	QUAGGAS PUTS	334	0	30°7'10.57S	20°36'39.17E	Farm
9	BLOK ZYNKOLK WEST	335	0	30°3'24.48S	20°38'28.88E	Farm
10	GROOT LEMOEN KOP WEST	336	0	29°59'12.11S	20°38'36.76E	Farm
11	BLINK VLEI	333	0	30°10'26.63S	20°34'1.34E	Farm
12	GOUS VLEY	21	0	30°16'1.76S	20°32'0.6E	Farm
13	RIET KOLK WEST	22	0	30°19'3.46S	20°31'13.02E	Farm
14	DIK DOORNS WEST	202	0	30°24'27.99S	20°29'11.87E	Farm
15	QUAGGAS PUTS	334	0	30°8'15.28S	20°36'51.42E	Farm Portion
16		201	3	30°21'40.93S	20°30'28.61E	Farm Portion
17	QUAGGAS PUTS	334	1	30°6'25.48S	20°37'26.32E	Farm Portion
18	BLINK VLEI	333	1	30°11'49.49S	20°34'48.88E	Farm Portion
19	GOUS VLEY	21	0	30°16'16.66S	20°33'35.7E	Farm Portion
20	GROOT LEMOEN KOP WEST	336	2	30°0'1.25	20°39'30.88E	Farm Portion
21	BLINK VLEI	333	0	30°10'10.85S	20°35'43.54E	Farm Portion
22	BLOK ZYNKOLK WEST	335	2	30°3'21.97S	20°37'44.88E	Farm Portion
23	KLEIN QUAGGAS	323	1	29°54'39.88S	20°42'20.43E	Farm Portion

	RIVIER					
24	RIET KOLK WEST	22	5	30°18'8.42S	20°31'48.08E	Farm Portion
25		202	1	30°24'50.08S	20°29'25.52E	Farm Portion
26	KRANSKOP	20	0	30°13'49.73S	20°33'56.01E	Farm Portion
27	HARDE VLEY	201	1	30°22'8.3S	20°31'39.9E	Farm Portion
28	GOUS VLEY	21	1	30°15'56.79S	20°32'35.12E	Farm Portion
29	QUAGGAS PUTS	334	5	30°5'55.59S	20°36'24.65E	Farm Portion
30	RIET KOLK WEST	22	2	30°19'54.26S	20°31'7.14E	Farm Portion
31	KLEIN QUAGGAS RIVIER	323	0	29°57'14.42S	20°42'49.58E	Farm Portion
32		201	2	30°23'32.47S	20°29'50.19E	Farm Portion
33	KLEIN LEMOEN KOP WEST	322	0	29°55'25.6S	20°46'17.6E	Farm Portion
34	STOF BAKJES	303	0	29°50'50.39S	20°46'10.09E	Farm Portion
35	RIET KOLK WEST	22	3	30°18'5.62S	20°31'48.44E	Farm Portion

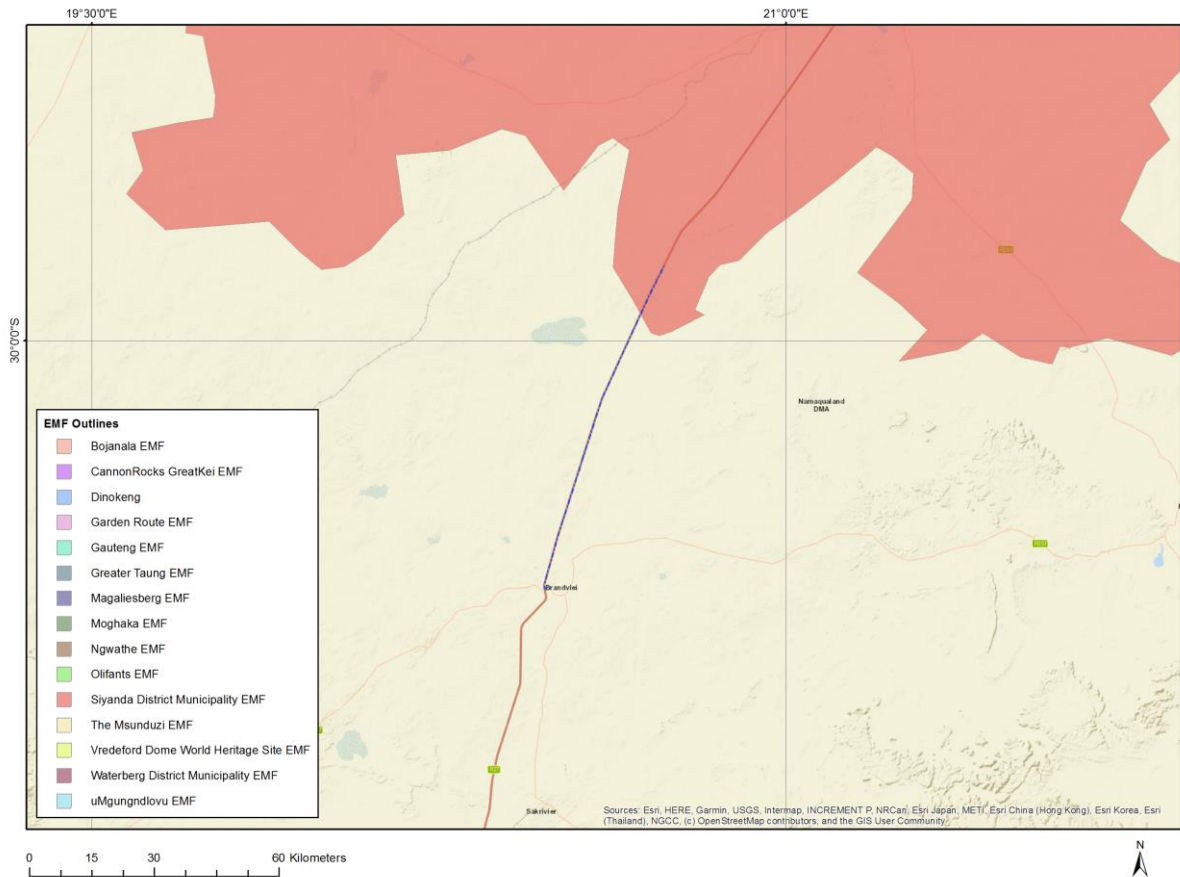
Development footprint¹ vertices:
No development footprint(s) specified.

Wind and Solar developments with an approved Environmental Authorisation or applications under consideration within 30 km of the proposed area

No	EIA Reference No	Classification	Status of application	Distance from proposed area (km)
1	14/12/16/3/3/2/2027	Solar PV	Approved	10.7
2	14/12/16/3/3/2/695	Solar PV	Approved	10.7
3	14/12/16/3/3/2/694/4	Solar - CSP	Approved	10.7
4	14/12/16/3/3/2/696/AM2	Solar PV	Approved	10.7
5	14/12/16/3/3/2/694/2	Solar - CSP	Approved	10.7
6	14/12/16/3/3/2/696	Solar PV	Approved	10.7
7	14/12/16/3/3/2/694/2/AM1	Solar - CSP	Approved	10.7
8	14/12/16/3/3/2/694/1	Solar - CSP	Approved	18.3
9	14/12/16/3/3/2/2223	Solar PV	Approved	18
10	14/12/16/3/3/2/694	Solar - CSP	Approved	18.3

¹ “development footprint”, means the area within the site on which the development will take place and includes all ancillary developments for example roads, power lines, boundary walls, paving etc. which require vegetation clearance or which will be disturbed and for which the application has been submitted.

Environmental Management Frameworks relevant to the application



Environmental Management Framework	LINK
Siyanda District Municipality EMF	https://screening.environment.gov.za/ScreeningDownloads/EMF/SIYANDA EMF REPORT 2008.pdf

Environmental screening results and assessment outcomes

The following sections contain a summary of any development incentives, restrictions, exclusions or prohibitions that apply to the proposed development site as well as the most environmental sensitive features on the site based on the site sensitivity screening results for the application classification that was selected. The application classification selected for this report is: **Utilities Infrastructure | Pipelines | Water | Fresh_Storm Water.**

Relevant development incentives, restrictions, exclusions or prohibitions

The following development incentives, restrictions, exclusions or prohibitions and their implications that apply to this site are indicated below.

Incentive, restriction or prohibition	Implication
Strategic Transmission Corridor-Western	https://screening.environment.gov.za/ScreeningDownloads/Developmen

corridor	tZones/Combined_EGI.pdf
----------	---

Proposed Development Area Environmental Sensitivity

The following summary of the development site environmental sensitivities is identified. Only the highest environmental sensitivity is indicated. The footprint environmental sensitivities for the proposed development footprint as identified, are indicative only and must be verified on site by a suitably qualified person before the specialist assessments identified below can be confirmed.

Theme	Very High sensitivity	High sensitivity	Medium sensitivity	Low sensitivity
Agriculture Theme			X	
Animal Species Theme		X		
Aquatic Biodiversity Theme	X			
Archaeological and Cultural Heritage Theme	X			
Civil Aviation Theme		X		
Defence Theme				X
Paleontology Theme		X		
Plant Species Theme			X	
Terrestrial Biodiversity Theme	X			

Specialist assessments identified

Based on the selected classification, and the known impacts associated with the proposed development, the following list of specialist assessments have been identified for inclusion in the assessment report. It is the responsibility of the EAP to confirm this list and to motivate in the assessment report, the reason for not including any of the identified specialist study including the provision of photographic evidence of the site situation.

No	Specialist assessment	Assessment Protocol
1	Agricultural Impact Assessment	https://screening.environment.gov.za/ScreeningDownloads/AssessmentProtocols/Gazetted_General_Agriculture_Assessment_Protocols.pdf
2	Archaeological and Cultural Heritage Impact Assessment	https://screening.environment.gov.za/ScreeningDownloads/AssessmentProtocols/Gazetted_General_Requirement_Assessment_Protocols.pdf
3	Palaeontology Impact Assessment	https://screening.environment.gov.za/ScreeningDownloads/AssessmentProtocols/Gazetted_General_Requirement_Assessment_Protocols.pdf
4	Terrestrial Biodiversity Impact Assessment	https://screening.environment.gov.za/ScreeningDownloads/AssessmentProtocols/Gazetted_Terrestrial_Biodiversity_Assessment_Protocols.pdf
5	Aquatic Biodiversity Impact Assessment	https://screening.environment.gov.za/ScreeningDownloads/AssessmentProtocols/Gazetted_Aquatic_Biodiversity_Assessment_Protocols.pdf
6	Geotechnical Assessment	https://screening.environment.gov.za/ScreeningDownloads/AssessmentProtocols/Gazetted_General_Requirement_Assessment_Protocols.pdf
7	Socio-Economic	https://screening.environment.gov.za/ScreeningDownloads/AssessmentProtocols/Gazetted_General_Requirement_Assessment_Protocols.pdf

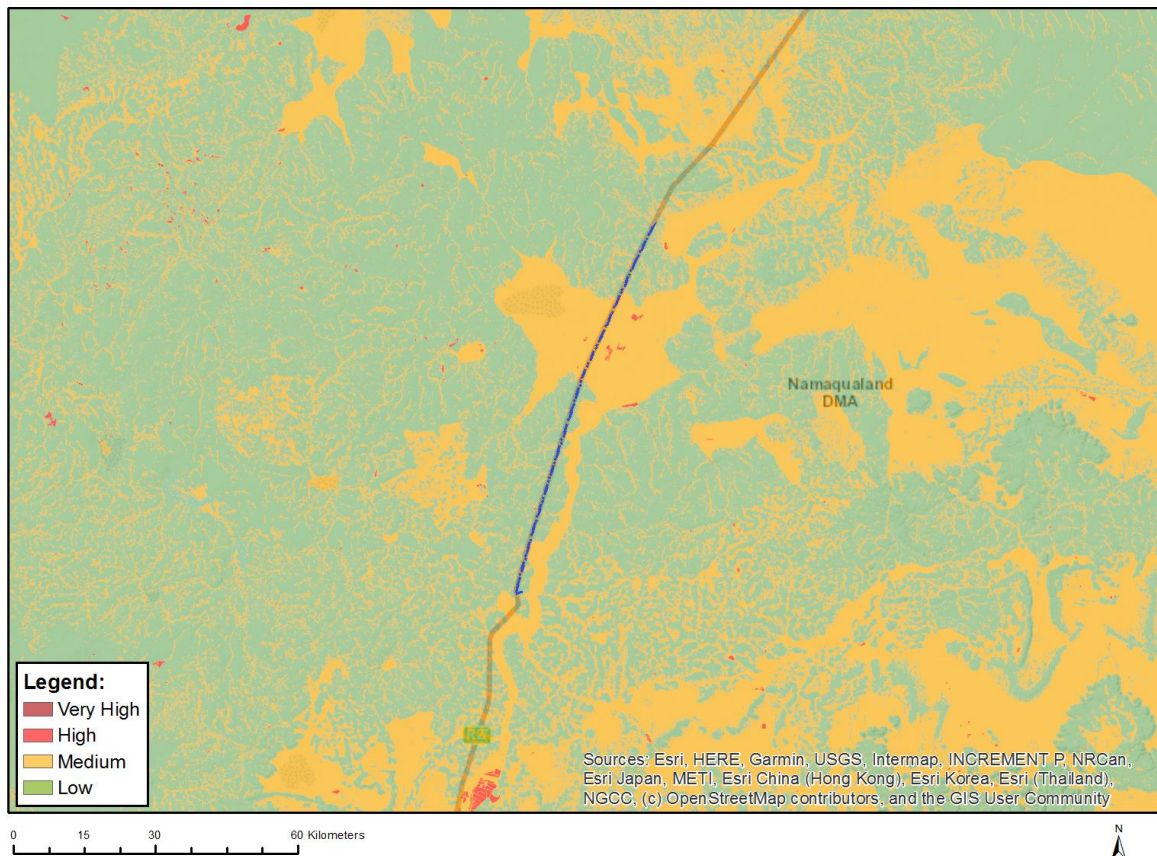
	Assessment	ssmentProtocols/Gazetted_General_Requirement_Assessment_Protocols.pdf
8	Plant Species Assessment	https://screening.environment.gov.za/ScreeningDownloads/AssessmentProtocols/Gazetted_Plant_Species_Assessment_Protocols.pdf
9	Animal Species Assessment	https://screening.environment.gov.za/ScreeningDownloads/AssessmentProtocols/Gazetted_Animal_Species_Assessment_Protocols.pdf

OFFICIAL

Results of the environmental sensitivity of the proposed area.

The following section represents the results of the screening for environmental sensitivity of the proposed site for relevant environmental themes associated with the project classification. It is the duty of the EAP to ensure that the environmental themes provided by the screening tool are comprehensive and complete for the project. Refer to the disclaimer.

MAP OF RELATIVE AGRICULTURE THEME SENSITIVITY

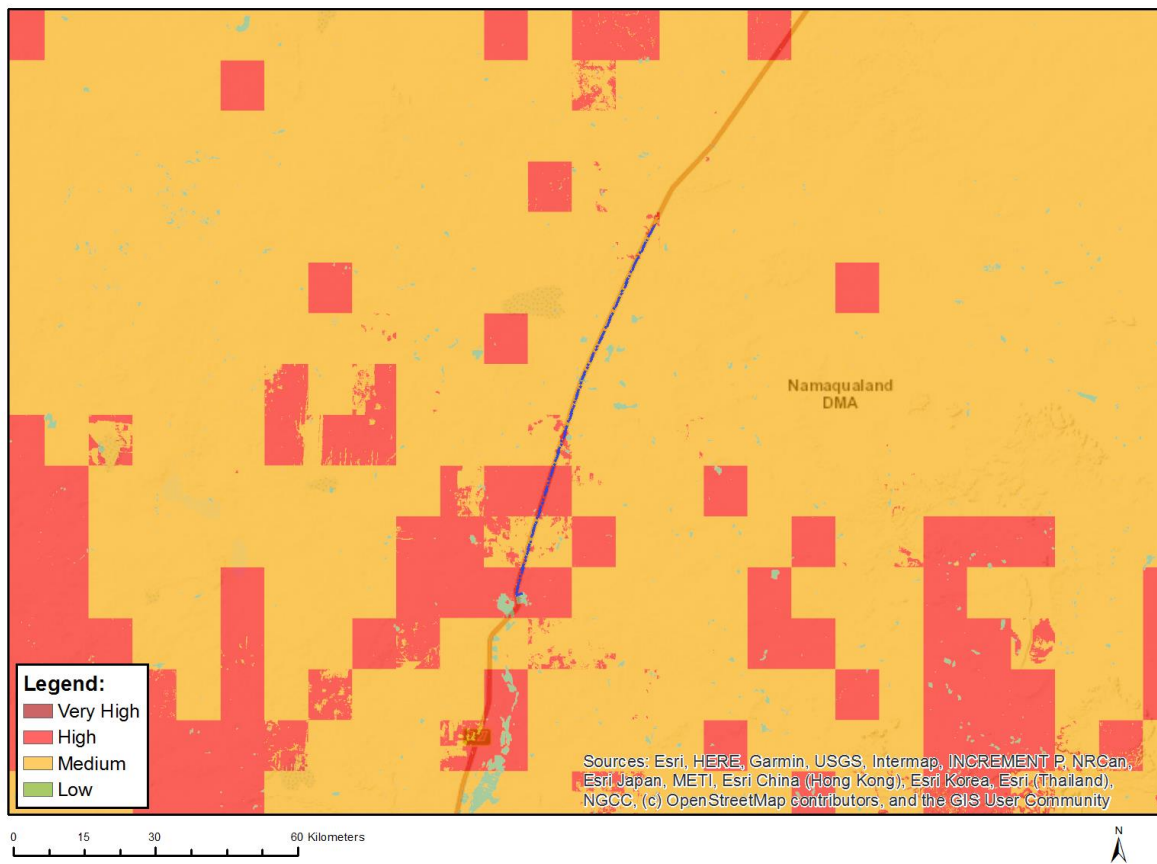


Very High sensitivity	High sensitivity	Medium sensitivity	Low sensitivity
		X	

Sensitivity Features:

Sensitivity	Feature(s)
Low	Land capability;01. Very low/02. Very low/03. Low-Very low/04. Low-Very low/05. Low
Medium	Land capability;06. Low-Moderate/07. Low-Moderate/08. Moderate

MAP OF RELATIVE ANIMAL SPECIES THEME SENSITIVITY



Where only a sensitive plant unique number or sensitive animal unique number is provided in the screening report and an assessment is required, the environmental assessment practitioner (EAP) or specialist is required to email SANBI at eiadatarequests@sanbi.org.za listing all sensitive species with their unique identifiers for which information is required. The name has been withheld as the species may be prone to illegal harvesting and must be protected. SANBI will release the actual species name after the details of the EAP or specialist have been documented.

Very High sensitivity	High sensitivity	Medium sensitivity	Low sensitivity
	X		

Sensitivity Features:

Sensitivity	Feature(s)
High	Aves-Neotis ludwigii
High	Aves-Polemaetus bellicosus
High	Aves-Calendulauda burra
Low	Subject to confirmation
Medium	Aves-Calendulauda burra
Medium	Aves-Neotis ludwigii

MAP OF RELATIVE AQUATIC BIODIVERSITY THEME SENSITIVITY

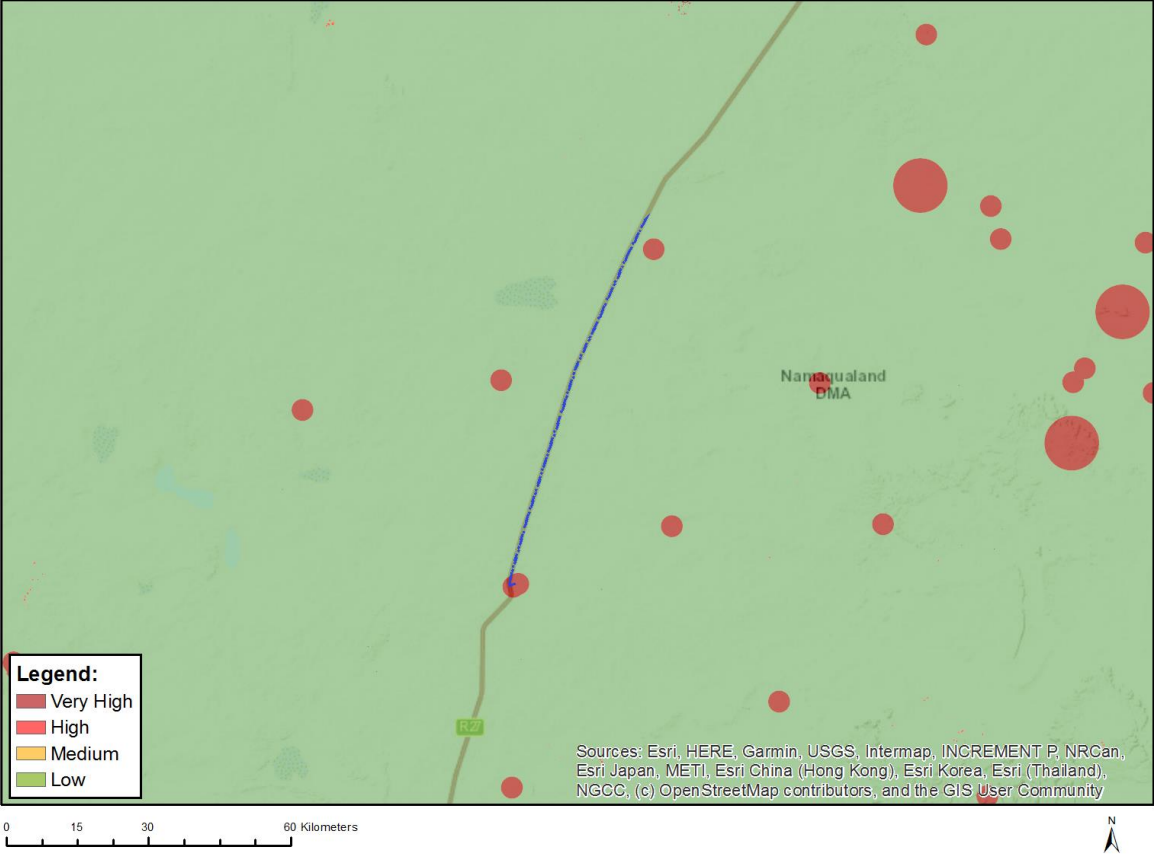


Very High sensitivity	High sensitivity	Medium sensitivity	Low sensitivity
X			

Sensitivity Features:

Sensitivity	Feature(s)
Low	Low sensitivity
Very High	FEPA Subcatchment
Very High	Rivers_AB
Very High	Wetlands_Bushmanland Bioregion (Depression)

MAP OF RELATIVE ARCHAEOLOGICAL AND CULTURAL HERITAGE THEME SENSITIVITY

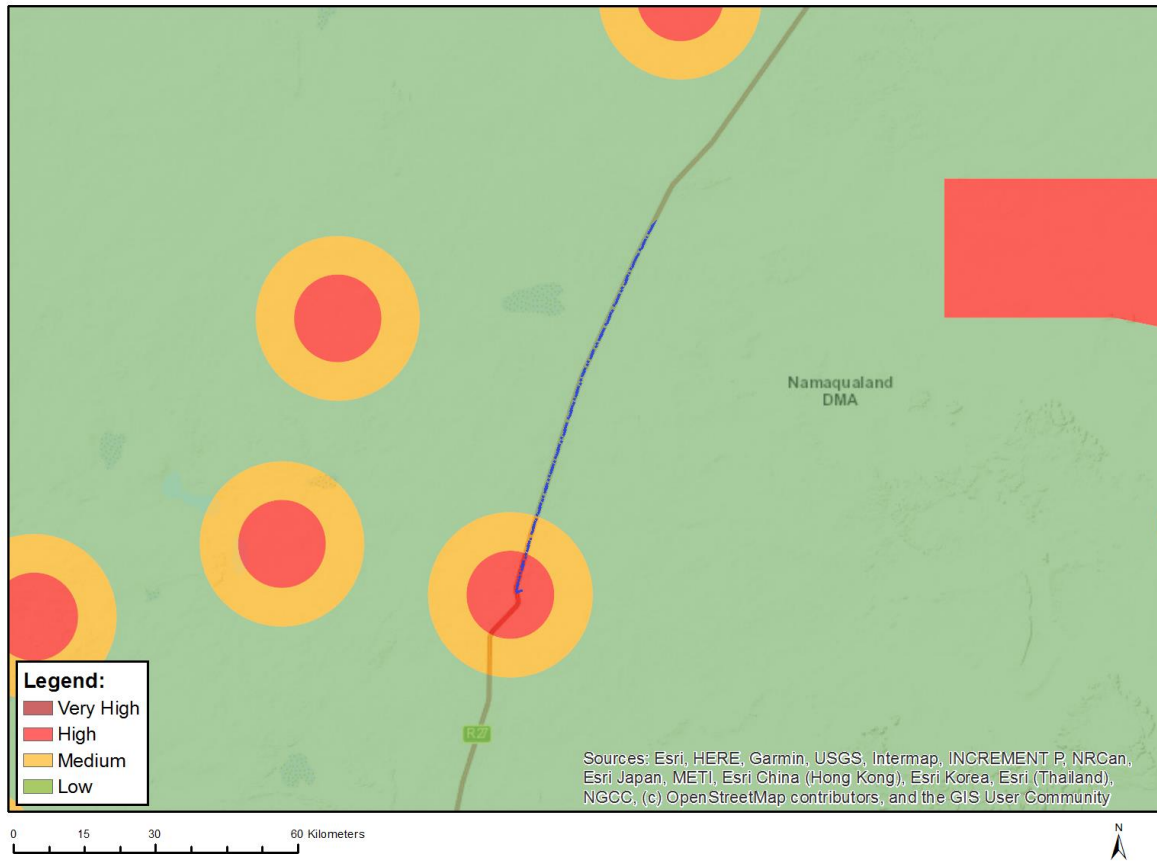


Very High sensitivity	High sensitivity	Medium sensitivity	Low sensitivity
X			

Sensitivity Features:

Sensitivity	Feature(s)
High	Within 50m of a Grade IIIc Heritage site
Low	Low sensitivity
Very High	Within 2km of a Grade II Heritage site

MAP OF RELATIVE CIVIL AVIATION THEME SENSITIVITY

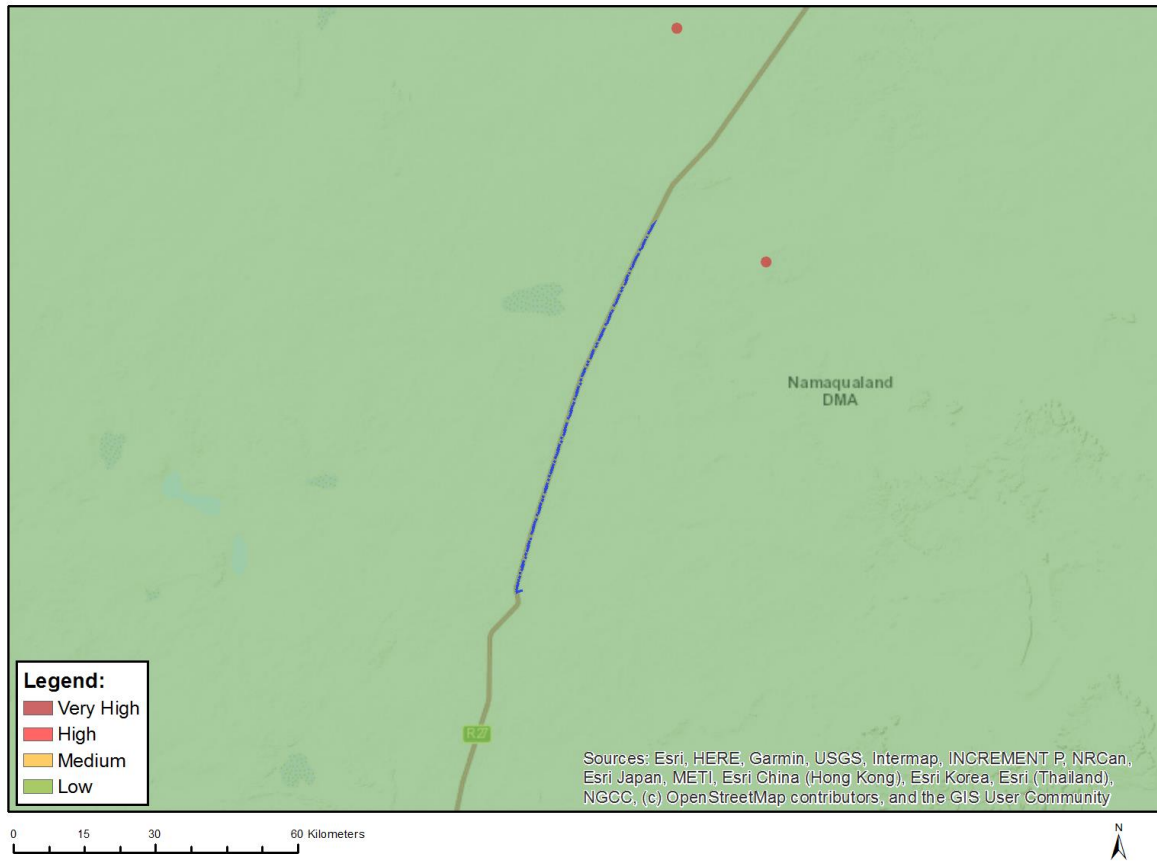


Very High sensitivity	High sensitivity	Medium sensitivity	Low sensitivity
	X		

Sensitivity Features:

Sensitivity	Feature(s)
High	Within 8 km of other civil aviation aerodrome
Low	Low sensitivity
Medium	Between 8 and 15 km of other civil aviation aerodrome

MAP OF RELATIVE DEFENCE THEME SENSITIVITY

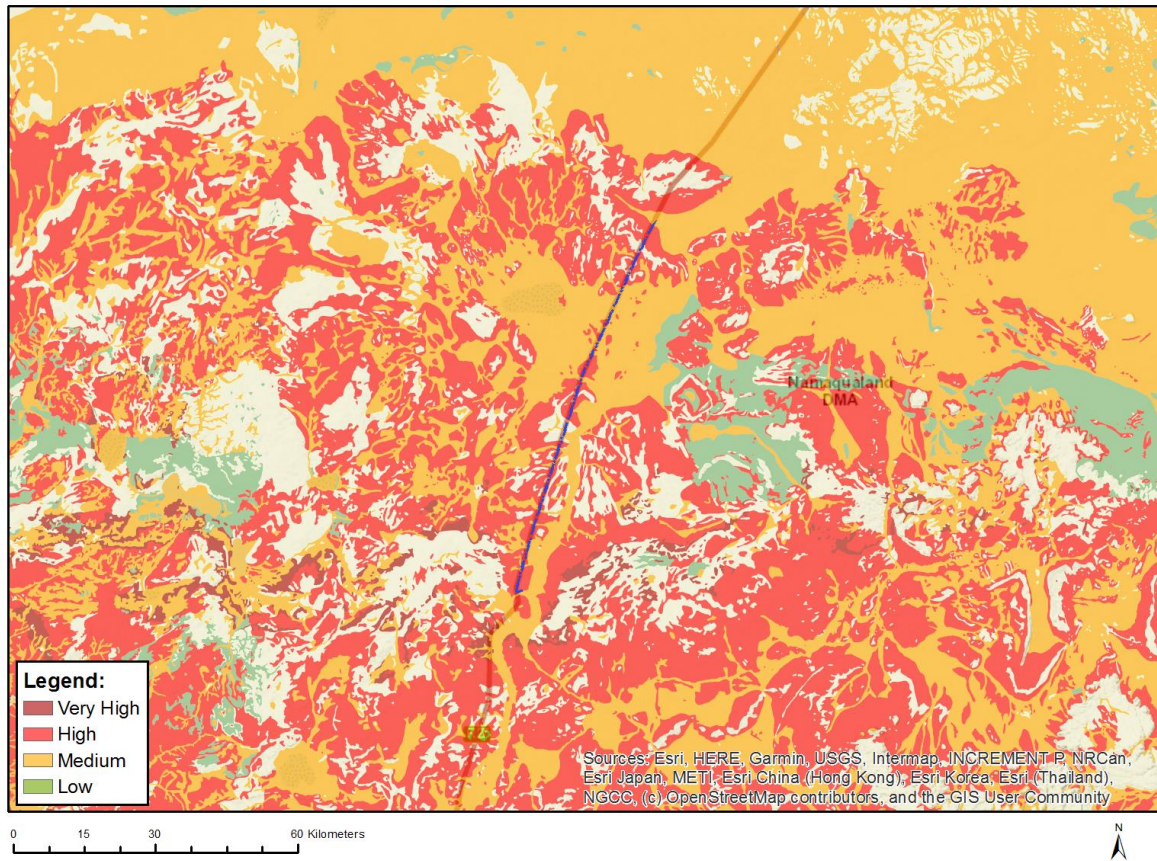


Very High sensitivity	High sensitivity	Medium sensitivity	Low sensitivity
			X

Sensitivity Features:

Sensitivity	Feature(s)
Low	Low Sensitivity

MAP OF RELATIVE PALEONTOLOGY THEME SENSITIVITY

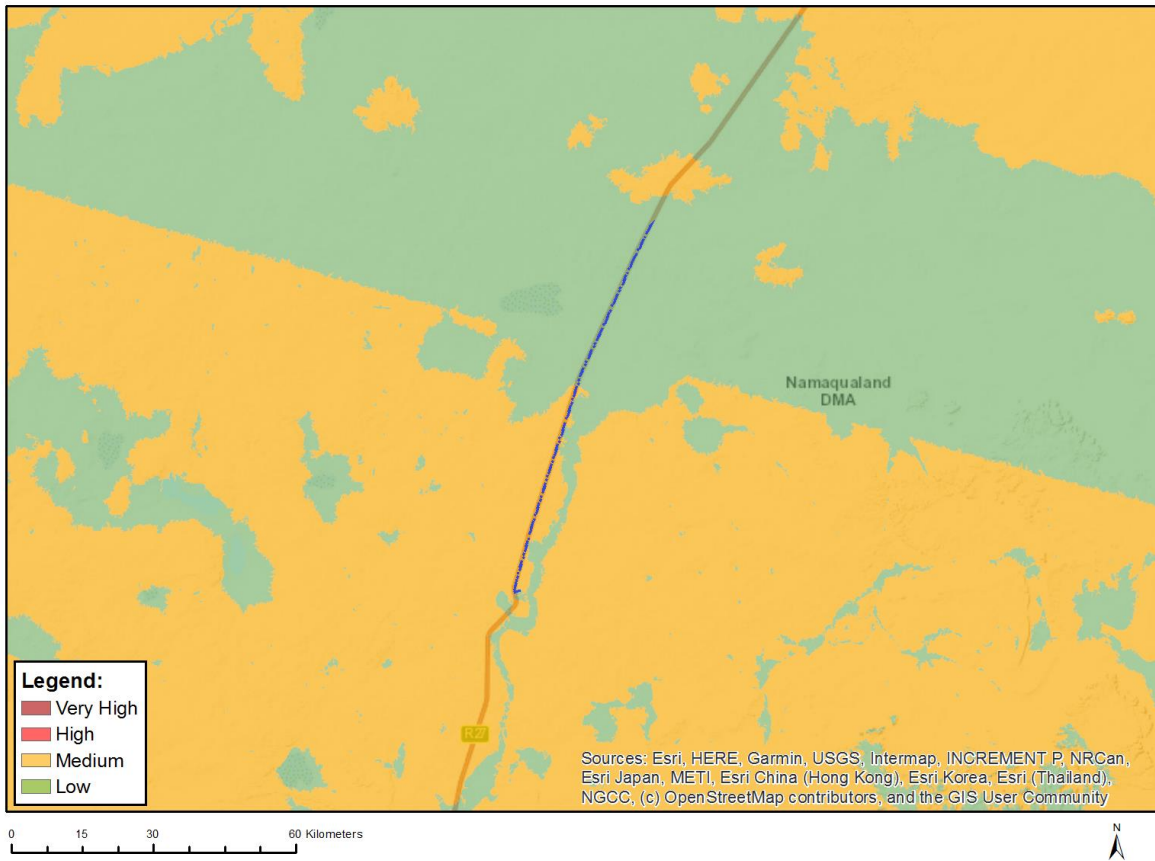


Very High sensitivity	High sensitivity	Medium sensitivity	Low sensitivity
	X		

Sensitivity Features:

Sensitivity	Feature(s)
High	Features with a High paleontological sensitivity
Medium	Features with a Medium paleontological sensitivity

MAP OF RELATIVE PLANT SPECIES THEME SENSITIVITY



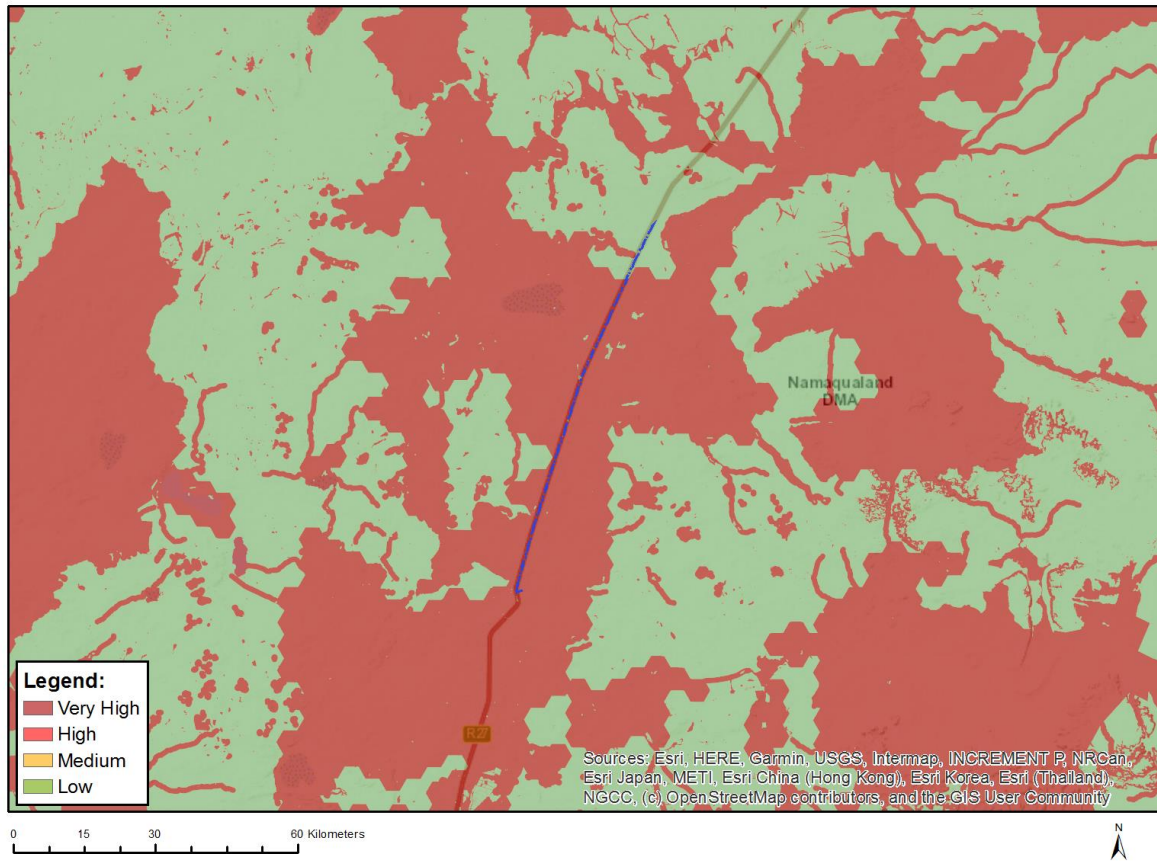
Where only a sensitive plant unique number or sensitive animal unique number is provided in the screening report and an assessment is required, the environmental assessment practitioner (EAP) or specialist is required to email SANBI at eiadatarequests@sanbi.org.za listing all sensitive species with their unique identifiers for which information is required. The name has been withheld as the species may be prone to illegal harvesting and must be protected. SANBI will release the actual species name after the details of the EAP or specialist have been documented.

Very High sensitivity	High sensitivity	Medium sensitivity	Low sensitivity
		X	

Sensitivity Features:

Sensitivity	Feature(s)
Low	Low Sensitivity
Medium	Dregeochloa calviniensis

MAP OF RELATIVE TERRESTRIAL BIODIVERSITY THEME SENSITIVITY



Very High sensitivity	High sensitivity	Medium sensitivity	Low sensitivity
X			

Sensitivity Features:

Sensitivity	Feature(s)
Low	Low Sensitivity
Very High	CBA 1
Very High	CBA 2
Very High	ESA
Very High	FEPA Subcatchment
Very High	National Protected Area Expansion Strategy (NPAES)