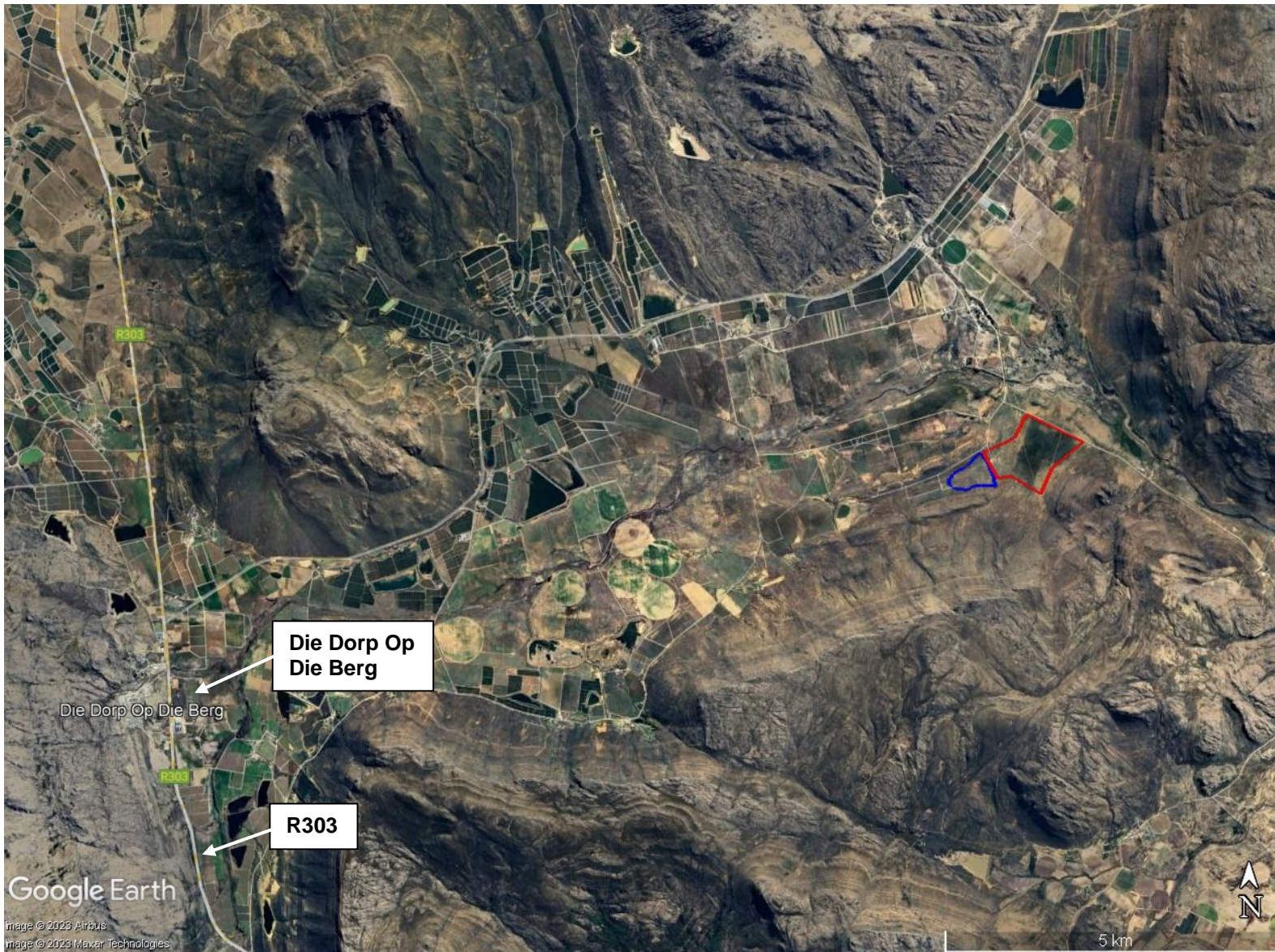


THE PROPOSED TOEKA INSTREAM DAM AND ASSOCIATED AGRICULTURAL AREA ON THE REMAINDER OF FARM HOUDENBEK NO. 415 (MORESTER LANDGOED), CERES, WESTERN CAPE



SITE CO-ORDINATES

Dam:

32° 59' 35.40"S

19° 26' 21.20"E

Agricultural Area:

32° 59' 26.20"S

19° 26' 54.80"E



Proposed Dam Site

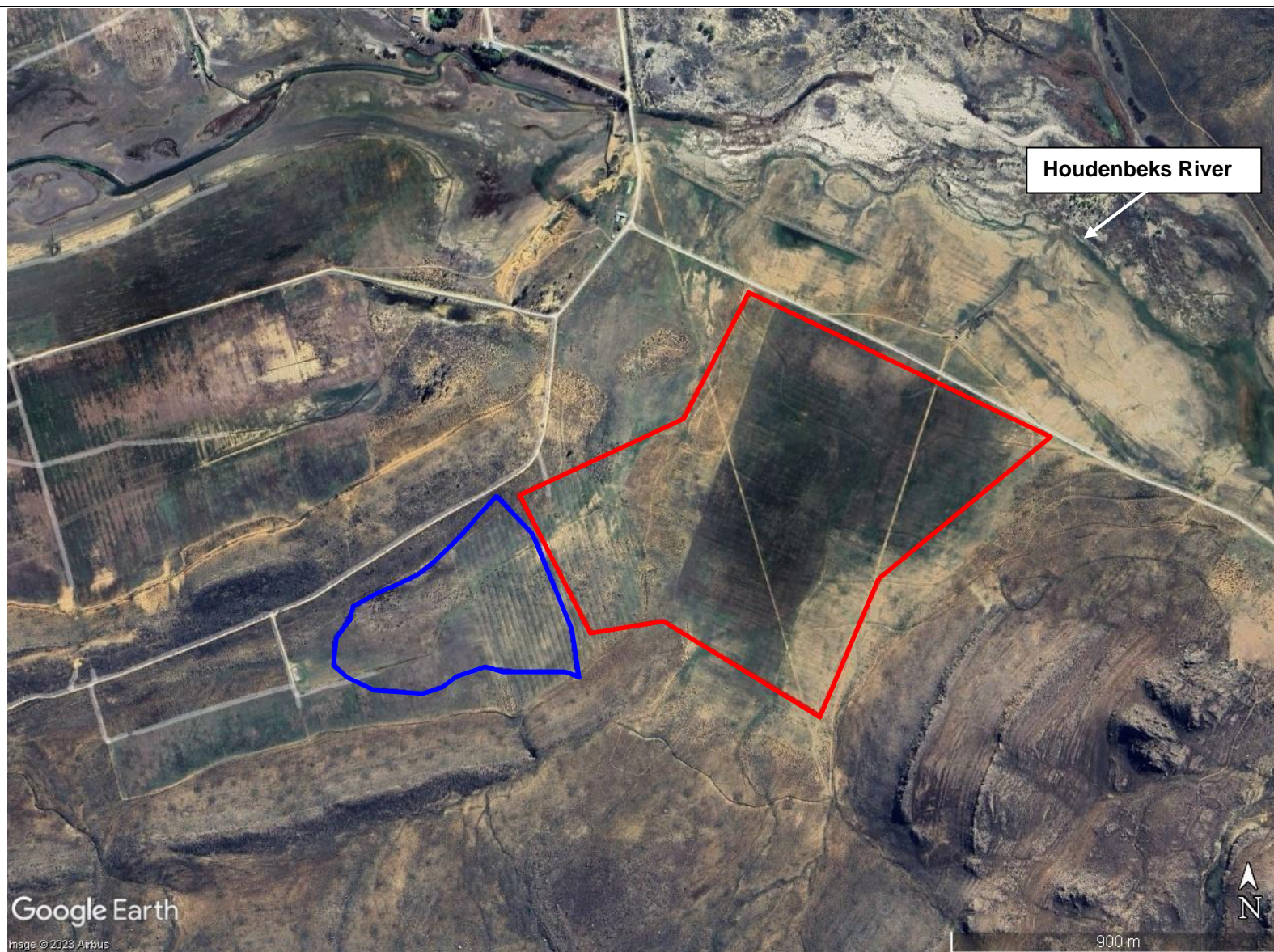


Proposed
Agricultural Site

April 2025



THE PROPOSED TOEKA INSTREAM DAM AND ASSOCIATED AGRICULTURAL AREA ON THE REMAINDER OF FARM HOUDENBEK NO. 415 (MORESTER LANDGOED), CERES, WESTERN CAPE



SITE CO-ORDINATES

Dam:

32° 59' 35.40"S
19° 26' 21.20"E

Agricultural Area:

32° 59' 26.20"S
19° 26' 54.80"E



Proposed Dam Site



Proposed
Agricultural Site

April 2025



EnviroAfrica

environmental management and impact assessment | engineering | geotechnical | infrastructure | planning | water resources