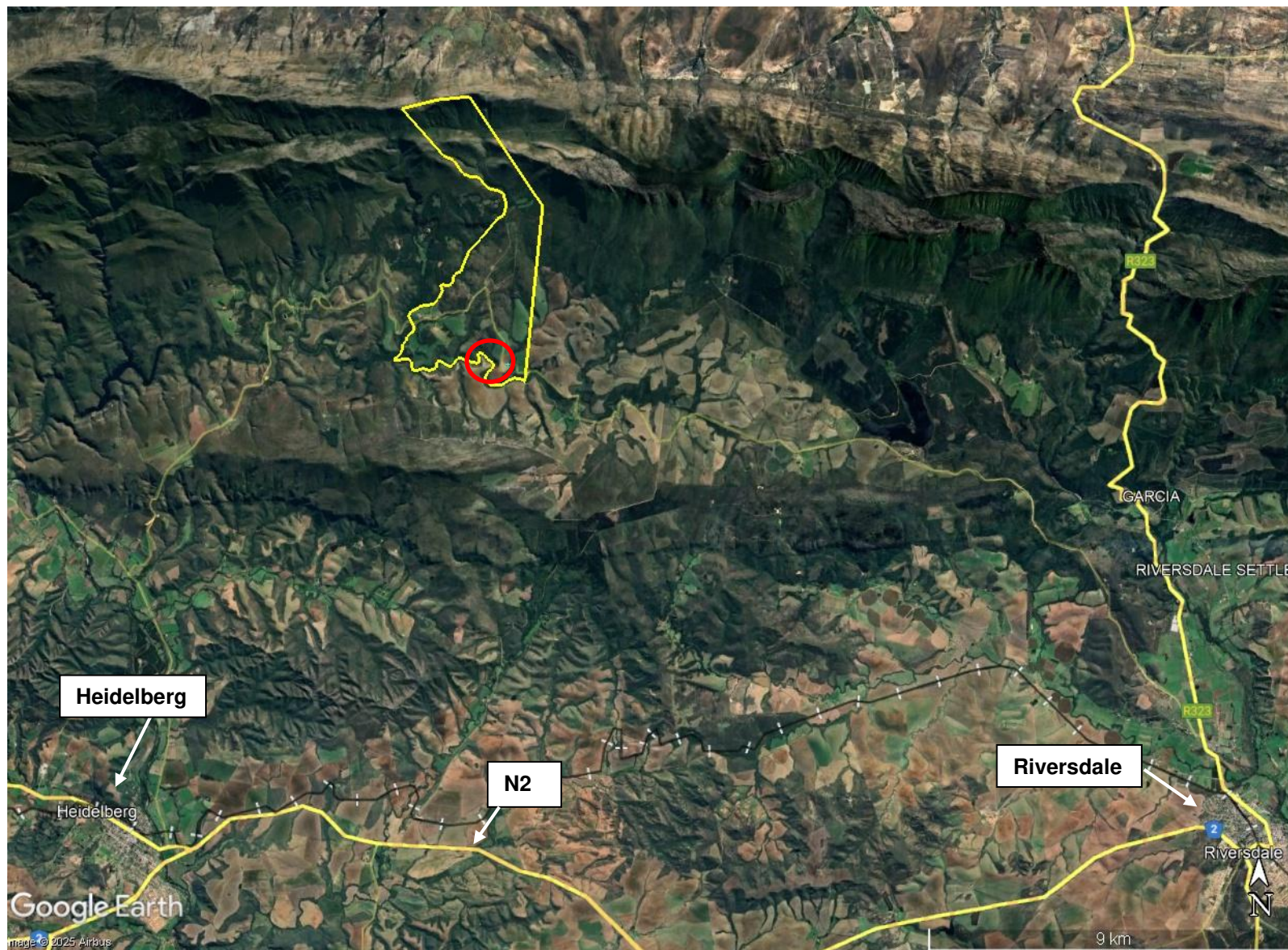


SECTION 24G APPLICATION FOR THE UNLAWFUL CLEARANCE OF VEGETATION AND CONSTRUCTION OF A DAM ON FARM 91, RIVERSDALE



SITE CO-ORDINATES
(Approximate Centre Point
of Development Area)

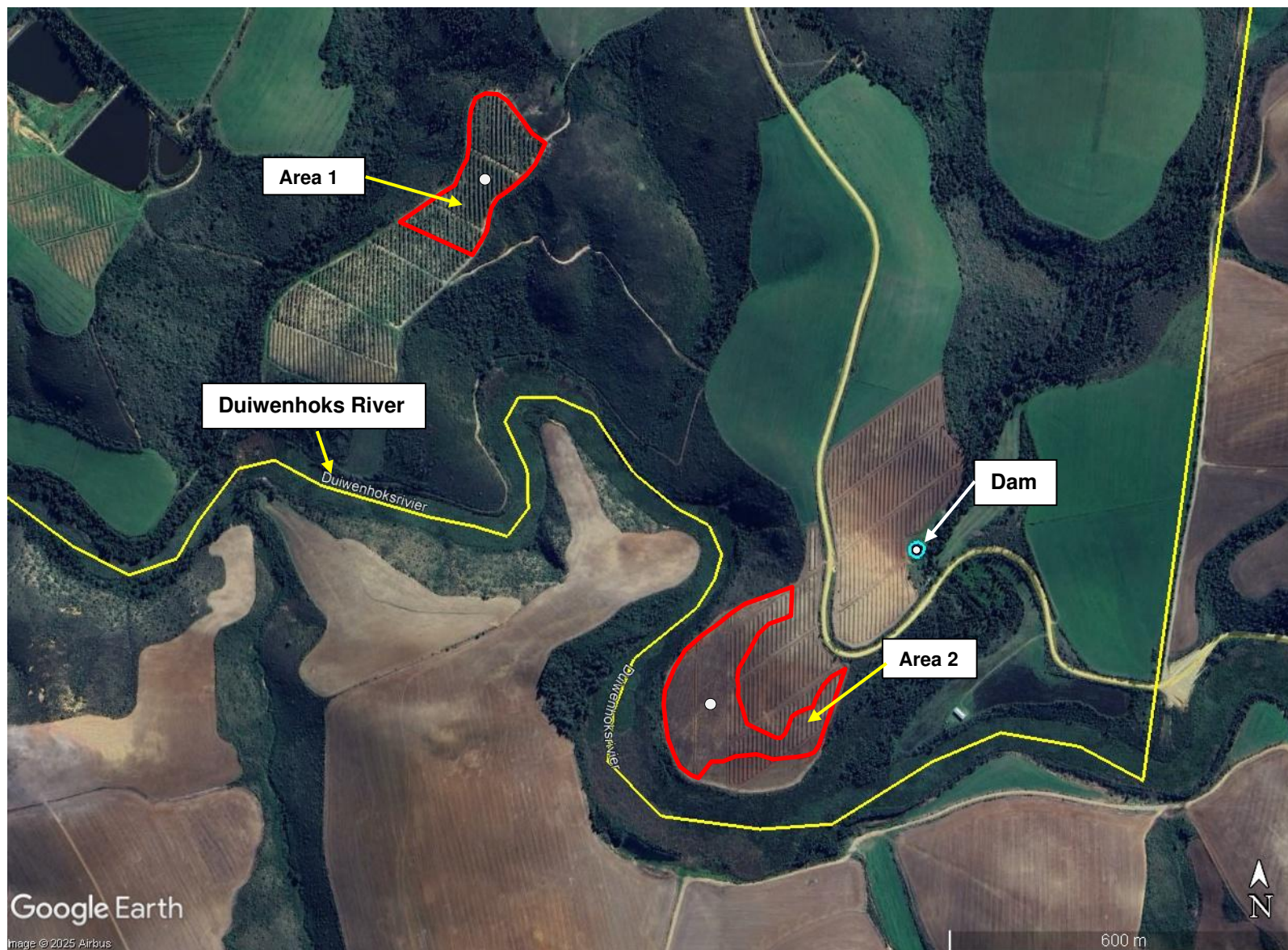
33° 28' 01.40" S,
18° 45' 07.70" E.

-  **Farm 91,
Riversdale**
-  **Development
Area**

MARCH 2025



SECTION 24G APPLICATION FOR THE UNLAWFUL CLEARANCE OF VEGETATION AND CONSTRUCTION OF A DAM ON FARM 91, RIVERSDALE



POINT SITE CO-ORDINATES (approximate centre point)

Dam	33° 59' 13.25" S, 21° 03' 25.80" E.
Area 1	33° 58' 52.38" S, 21° 02' 55.80" E.
Area 2	33° 59' 21.85" S, 21° 03' 12.32" E.

- Farm 91,
Riversdale**
- Areas cleared of
indigenous
vegetation**
- Dam**