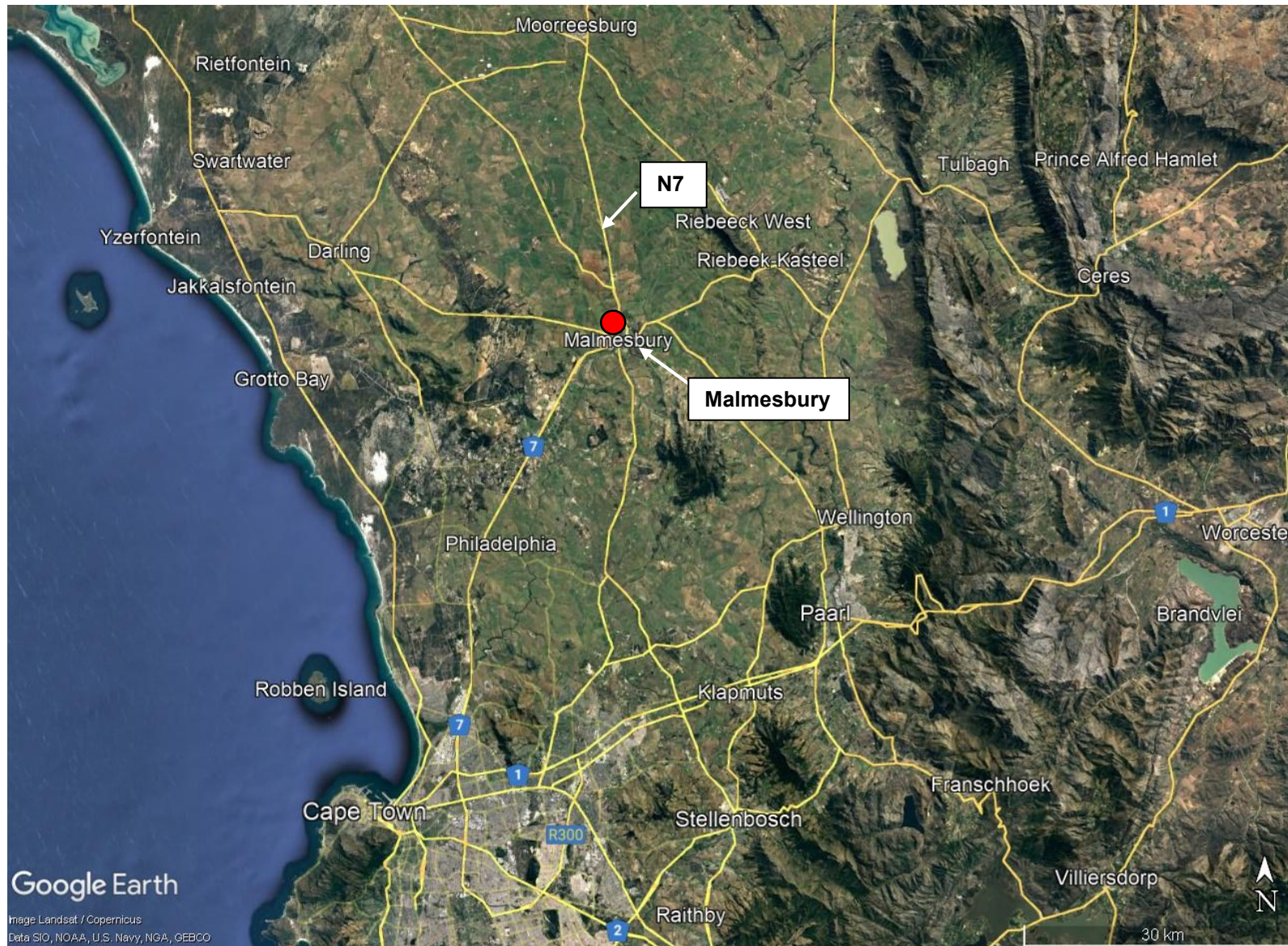


MOUNT ROYAL GOLF AND COUNTRY ESTATE – PHASE 2B AND 2C AMENDMENT



SITE CO-ORDINATES
(Approximate Centre Point)

33° 26' 47.70" S,
18° 42' 43.45" E.



Proposed Site

July 2025



MOUNT ROYAL GOLF AND COUNTRY ESTATE – PHASE 2B AND 2C AMENDMENT



SITE CO-ORDINATES

(Approximate Centre Point)

33° 26' 47.70" S,
18° 42' 43.45" E.

 Phase 2B and 2C