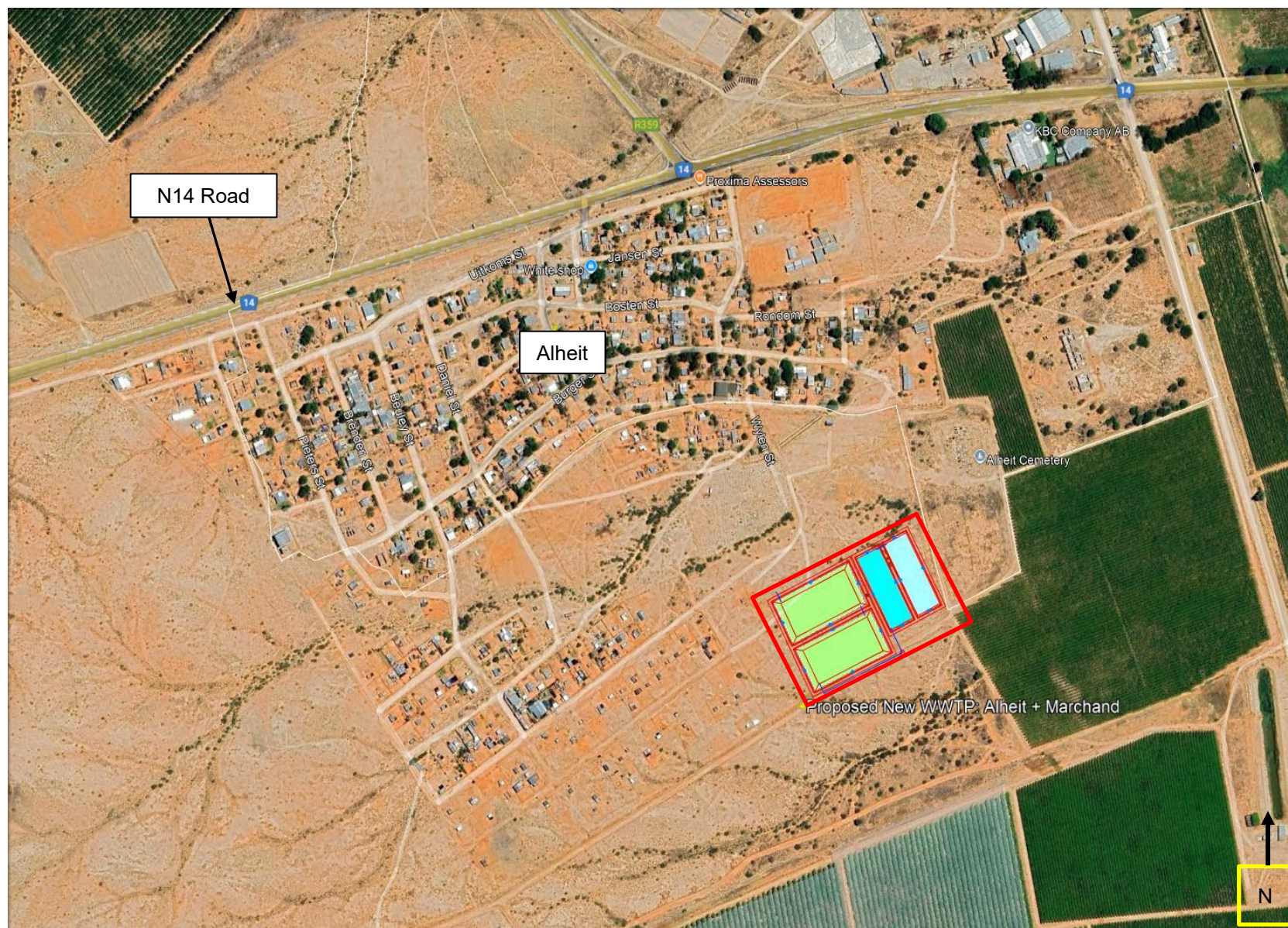


**PROPOSED WASTEWATER TREATMENT WORKS AND ASSOCIATED INFRASTRUCTURE FOR ALHEIT ON THE
REMAINDER OF ERF 1409, KAKAMAS SOUTH SETTLEMENT**



SITE COORDINATES:

**28°45'47.41"S;
20°32'18.40"E**

 **Proposed
WWTW**

ENVIROAFRICA NC

APRIL 2025

